

FOR SUBLEASE
3990 Old Town Avenue
Suite C-303
San Diego, CA 92110



Old Town Cabrillo Plaza

PETER WRIGHT
619.243.8450
pwright@qfcfe.com
BRE #01846272

EMMETT CAHILL
619.243.8457
ecahill@qfcfe.com
BRE #02033604

The information contained here has been obtained from sources considered to be reliable, but no guarantee of its accuracy is made by this company. In addition, no representation is made respecting zoning, condition of title, dimensions or any matters of a legal or environmental nature. Such matters should be referred to legal counsel for determination. Terms and conditions are subject to change without prior notice. Subject to errors and omissions.



SPACE AVAILABLE

2,213 SF

PROPERTY HIGHLIGHTS

- High-speed internet and fiber optic provided by AT&T and Cox
- 4.0/1,000 underground parking
- All common area amenities have been completely upgraded with Class A finishes and details

LEASE RATE

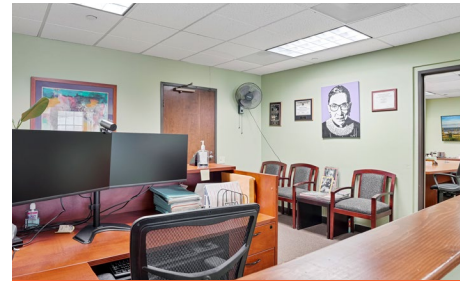
\$2.55 PSF + Utilities



PETER WRIGHT
619.243.8450
pwright@qfcre.com
BRE #01846272

EMMETT CAHILL
619.243.8457
ecahill@qfcre.com
BRE #02033604

The information contained here has been obtained from sources considered to be reliable, but no guarantee of its accuracy is made by this company. In addition, no representation is made respecting zoning, condition of title, dimensions or any matters of a legal or environmental nature. Such matters should be referred to legal counsel for determination. Terms and conditions are subject to change without prior notice. Subject to errors and omissions.



PHOTOS

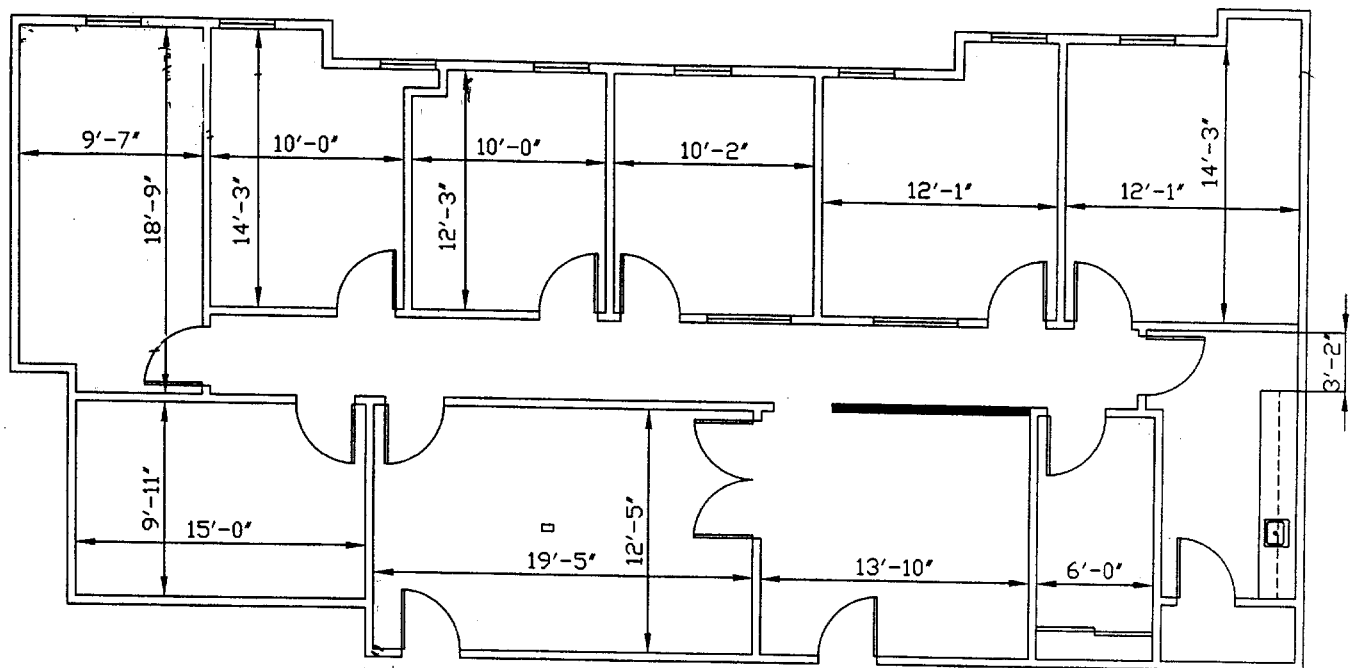


PETER WRIGHT
619.243.8450
pwright@qfcre.com
BRE #01846272

EMMETT CAHILL
619.243.8457
ecahill@qfcre.com
BRE #02033604

The information contained here has been obtained from sources considered to be reliable, but no guarantee of its accuracy is made by this company. In addition, no representation is made respecting zoning, condition of title, dimensions or any matters of a legal or environmental nature. Such matters should be referred to legal counsel for determination. Terms and conditions are subject to change without prior notice. Subject to errors and omissions.

FLOOR PLAN

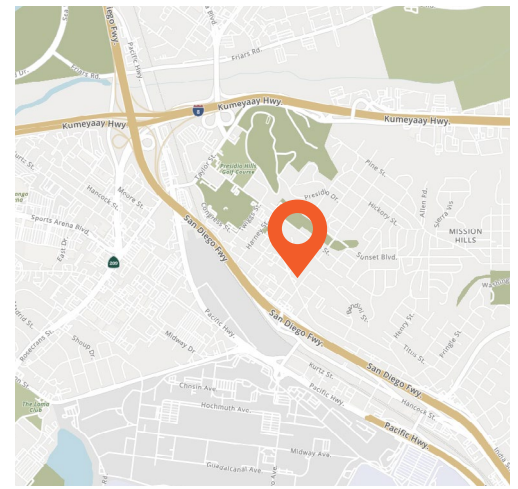
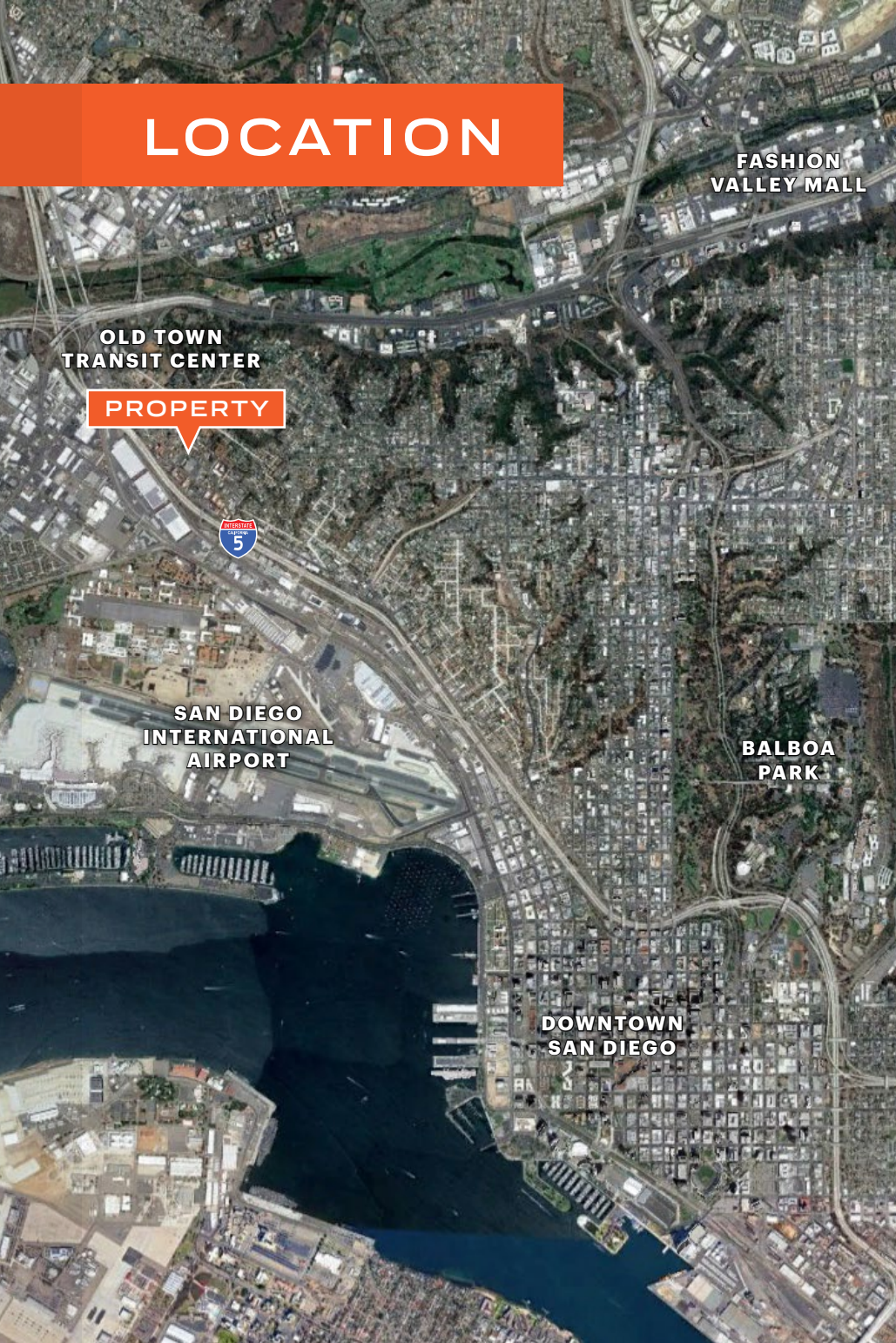


PETER WRIGHT
619.243.8450
pwright@qfcre.com
BRE #01846272

EMMETT CAHILL
619.243.8457
ecahill@qfcre.com
BRE #02033604

The information contained here has been obtained from sources considered to be reliable, but no guarantee of its accuracy is made by this company. In addition, no representation is made respecting zoning, condition of title, dimensions or any matters of a legal or environmental nature. Such matters should be referred to legal counsel for determination. Terms and conditions are subject to change without prior notice. Subject to errors and omissions.

LOCATION



LOCATION HIGHLIGHTS

- Close proximity to San Diego International Airport and Downtown San Diego
- Walking distance to numerous restaurant and retail amenities in the Old Town area
- Convenient access to the Old Town Transit Center, which is serviced by the San Diego city bus, the trolley, and the COASTER
- Located in the HUBZone

**CENTRALLY
LOCATED**
in San Diego

Convenient access to
**INTERSTATE 5 &
INTERSTATE 8**

PETER WRIGHT
619.243.8450
pwright@qfcre.com
BRE #01846272

EMMETT CAHILL
619.243.8457
ecahill@qfcre.com
BRE #02033604

The information contained here has been obtained from sources considered to be reliable, but no guarantee of its accuracy is made by this company. In addition, no representation is made respecting zoning, condition of title, dimensions or any matters of a legal or environmental nature. Such matters should be referred to legal counsel for determination. Terms and conditions are subject to change without prior notice. Subject to errors and omissions.

FOR SUBLEASE
3990 Old Town Avenue
Suite C-303
San Diego, CA 92110



Contact Information

QFC REAL ESTATE
1495 Pacific Highway, Suite 450
San Diego, CA 92101
619.243.8454 • qfcre.com

PETER WRIGHT
619.243.8450
pwright@qfcre.com
BRE #01846272

EMMETT CAHILL
619.243.8457
ecahill@qfcre.com
BRE #02033604

The information contained here has been obtained from sources considered to be reliable, but no guarantee of its accuracy is made by this company. In addition, no representation is made respecting zoning, condition of title, dimensions or any matters of a legal or environmental nature. Such matters should be referred to legal counsel for determination. Terms and conditions are subject to change without prior notice. Subject to errors and omissions.