

FOR LEASE

195 Inverness Dr W Greenwood Village, CO 80112

BUILDING DETAILS

SUITE 120	1,668 SF
RATE	\$28 NNN
NNN'S	\$19 PSF
TERM	Variable
BUILDOUT	Lab
PARKING	Garage Available
AVAILABLE	Now

**ADDITIONAL FEATURES**

- ▶ Monument Sign Available
- ▶ Lab Space
- ▶ Covered patient drop-off
- ▶ In-unit restroom
- ▶ Class A Medical Office

DESCRIPTION

Suite 120 at 195 Inverness Dr W offers 1,668 SF of existing medical lab space with excellent potential for conversion to a primary care or concierge medical practice. Located in the heart of the Inverness / DTC submarket, the suite benefits from ground-floor access, a rare covered building drop-off, abundant parking, and immediate access to I-25 and E-470. Surrounded by corporate campuses, hotels, and executive housing, this is an ideal setting for boutique healthcare providers seeking a professional image and strong patient convenience.

**Jack Rohr**

EMAIL jrohr@resoluteinv.com
PHONE 303-842-1869
WEBSITE www.resoluteinv.com

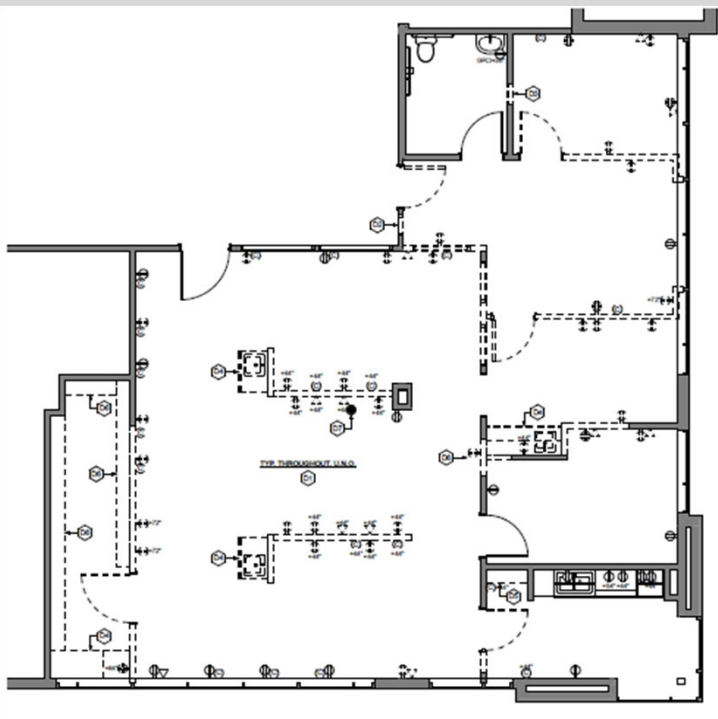


7374 South Alton Way Suite 203 Centennial, CO 80112

FOR LEASE

195 Inverness Dr W Greenwood Village, CO 80112

Current Floorplan



Potential Floorplan

