

GK

Commercial Realty Group, Inc.

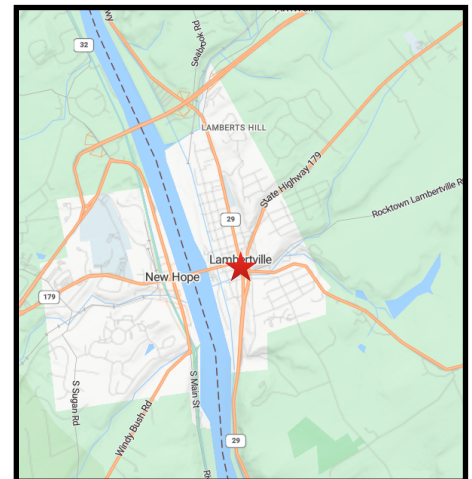
BROKERAGE ♦ DEVELOPMENT ♦ CONSULTING

Former Bank Building For Sale 33-37 Bridge Street Lambertville (Hunterdon County), NJ



KEY INFORMATION

- Freestanding former bank branch located at the signalized intersection of Bridge Street and South Union Street in the heart of downtown Lambertville
- Building is approximately 3,858 square feet (split on 1.5 floors) that is situated on approximately 0.32 acres of land (subject to Buyer's verification)
- Parking for 17 +/- cars (currently metered by City of Lambertville)
- Located in the CBD - Central Business District zone which permits a wide range of uses including general and professional offices, retail, restaurants and residential.
- Real Estate Taxes - \$26,674 (2022/3)
- Property sold with deed restriction on bank use



For additional information, contact:

Sam Kates

Office: (856) 795-5000

Cell: (856) 287-1818

Email: SKates@GKCRG.COM

*Post Office Box 331
Cherry Hill, NJ 08003*

*700 Delsea Drive
Westville, NJ 08093*

All information furnished regarding property for sale, rental or financing is from sources deemed reliable. No warranty or representation is made as to the accuracy thereof and same is submitted subject to errors, omissions, change of price, rental or other conditions or withdrawal without notice. No liability of any kind is to be imposed on the broker herein.

Former Bank Building For Sale

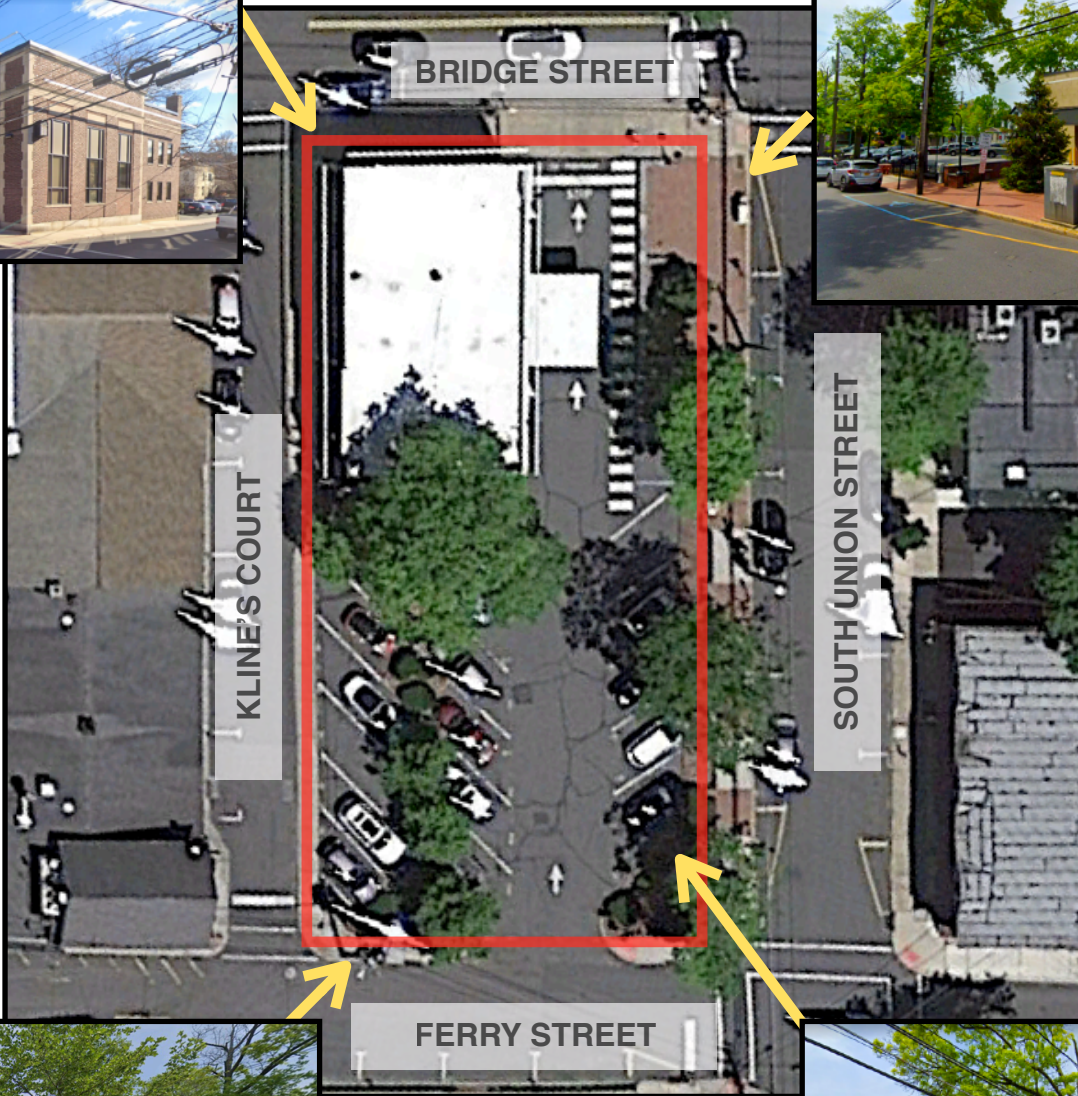
33-37 Bridge Street

Lambertville (Hunterdon County), NJ

Side View from Bridge Street



Side View from Bridge Street



Front View from Ferry/Kline corner



Front View from Ferry/South Union

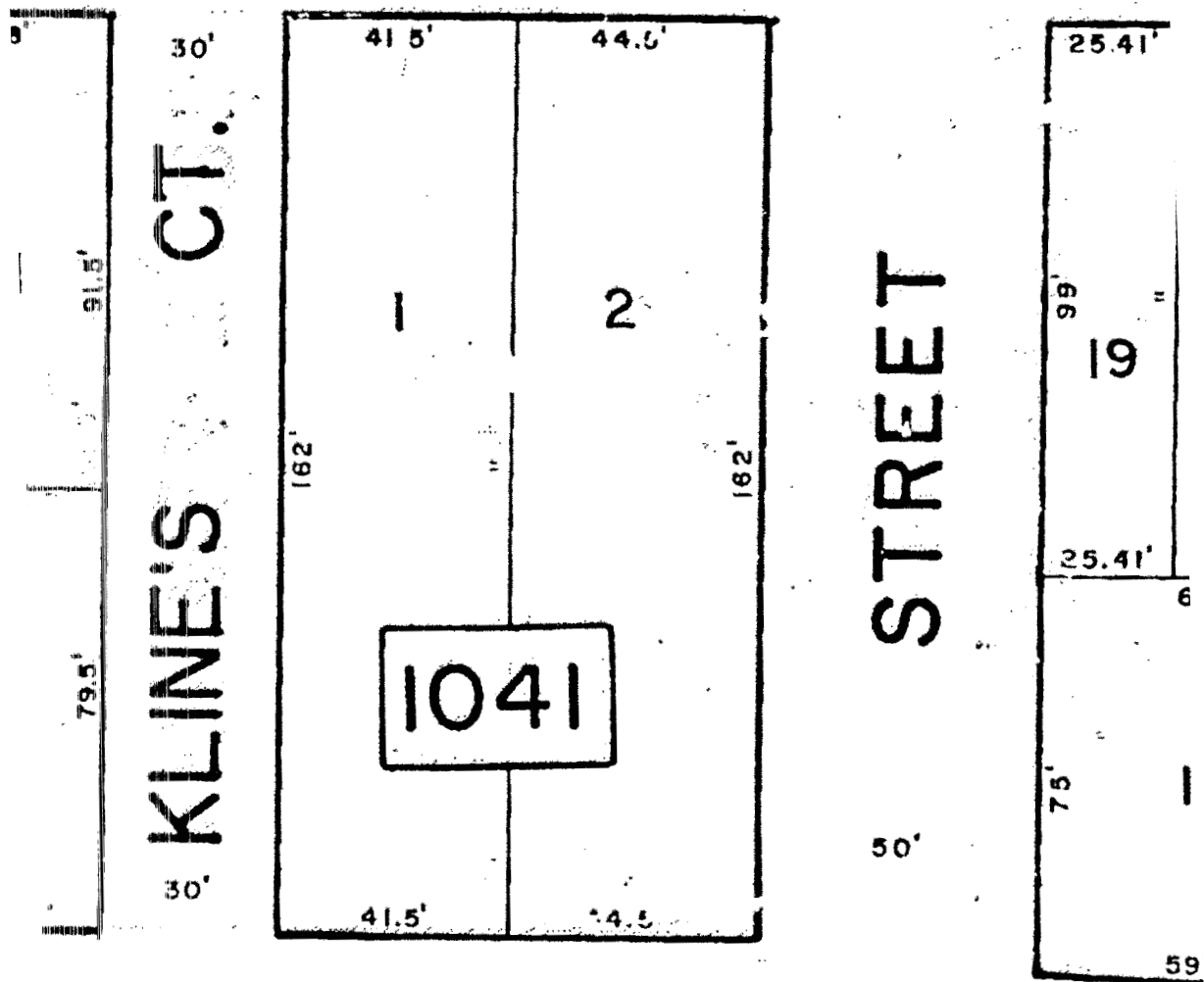
Former Bank Building For Sale

33-37 Bridge Street

Lambertville (Hunterdon County), NJ

TAX MAP - Block 1041, Lots 1 & 2

BRIDGE STREET



FERRY STREET