

For sale or lease

40,963 sf (0.92 acre) site



Property specifics:

Building SF	4,463 sf
Lot size	40,963 sf
Parcel ID number(s)	20-03-112-001-0000 20-03-112-002-0000 20-03-112-003-0000 20-03-112-004-0000 20-03-112-005-0000 20-03-112-006-0000 20-03-112-007-0000 20-03-112-008-0000
Alderman	Pat Dowell
Ward	3

Zoning	C1-3 & M1-2
2022 Real estate taxes	\$10,852.75
Lease Rate	\$3.50 Net
Sale Price	\$1,433,705



Close proximity to I-90/94.



Close proximity to CTA Red/Green lines and CTA bus service.



C1-3 zoning allows for a wide variety of uses.

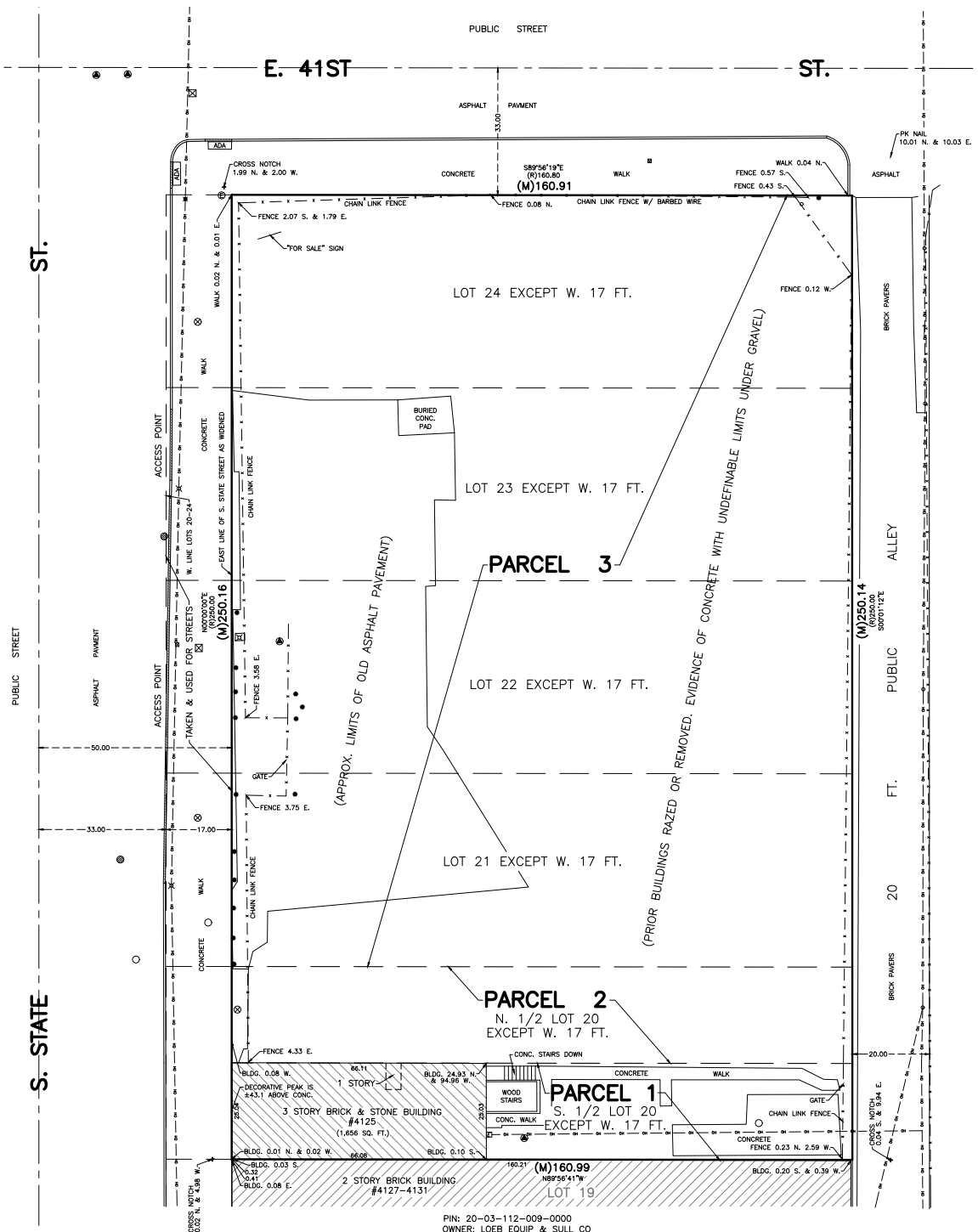
For more information

Steven A. Kohn, SIOR
Principal
steven.kohn@avisonyoung.com
D +1 847 849 1912
M +1 847 341 6048

Patrick Richwine
Associate
patrick.richwine@avisonyoung.com
D +1 847 653 0981
M +1 847 471 7129

Plat of Survey

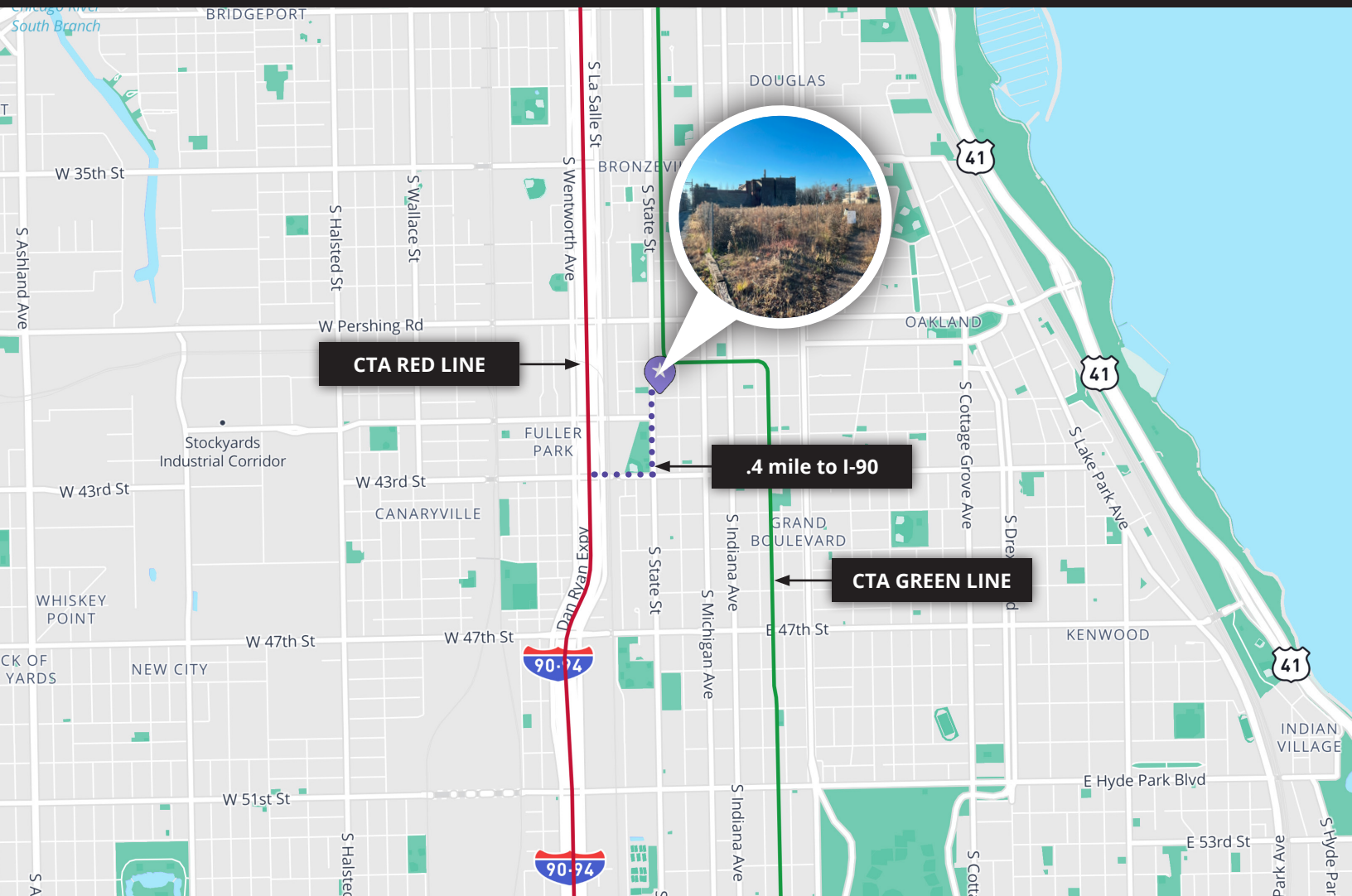
Available
4101 S. State St.
Chicago, IL 60609



PIN: 20-03-112-009-0000
OWNER: LOEB EQUIP & SULL CO



MAP



For more information, please contact:

Steven A. Kohn, SIOR
Principal
steven.kohn@avisonyoung.com
D: +1 847.849 1912
M: +1 847 341 6048

Patrick Richwine
Associate
patrick.richwine@avisonyoung.com
D: +1 847 653 0981
M: +1 847 471 7129

avisonyoung.com

© 2023 Avison Young - Chicago, LLC.

All rights reserved. E. & O.E.: The information contained herein was obtained from sources which we deem reliable and, while thought to be correct, is not guaranteed by Avison Young.

**AVISON
YOUNG**