



110 MARYLAND AVE, NE STOUT&TEAGUE



Mollye Wheeler, Director of Leasing
mwheeler@stoutandteague.com | 202.328.5136

STOUT & TEAGUE | 8001 Forbes Place, Ste 305, Springfield, VA 22151



Erected in 1923 the United Methodist Building has been a center for Methodist social witness on Capitol Hill for over one hundred years.

The United Methodist Building is the only non-government building on Capitol Hill. It houses the Washington offices of a number of ecumenical groups as well as the offices of the United Methodist Council of Bishops, United Methodist Women, and the United Methodist Commission on Religion and Race.

At the 2016 General Conference, the United Methodist Building became a Heritage Landmark of United Methodism – one of about 50 landmarks around the world.

FEATURES

- Efficient office suites with private restrooms
- Multiple conference facilities
- Tenant-only Fitness Center (\$25 annual fee)
- Chapel with weekly services
- Controlled access and reception desk
- Short distance to Metro
- Green roof
- Flexible lease terms

LOCATION

COMMUTER RAILS

Capitol South Station	(0.4mi)
Union Station	(0.6mi)

AIRPORTS

Ronald Reagan National	(4.7mi)
Washington Dulles	(29.1mi)



110 Maryland Ave NE

STOUT&TEAGUE

SUITE 110 2,545 RSF

1st Floor | 2,545 RSF

- Efficient 1st floor corner office space
- Two partitioned large offices/conference rooms
- Private restroom
- Storage/coat closet



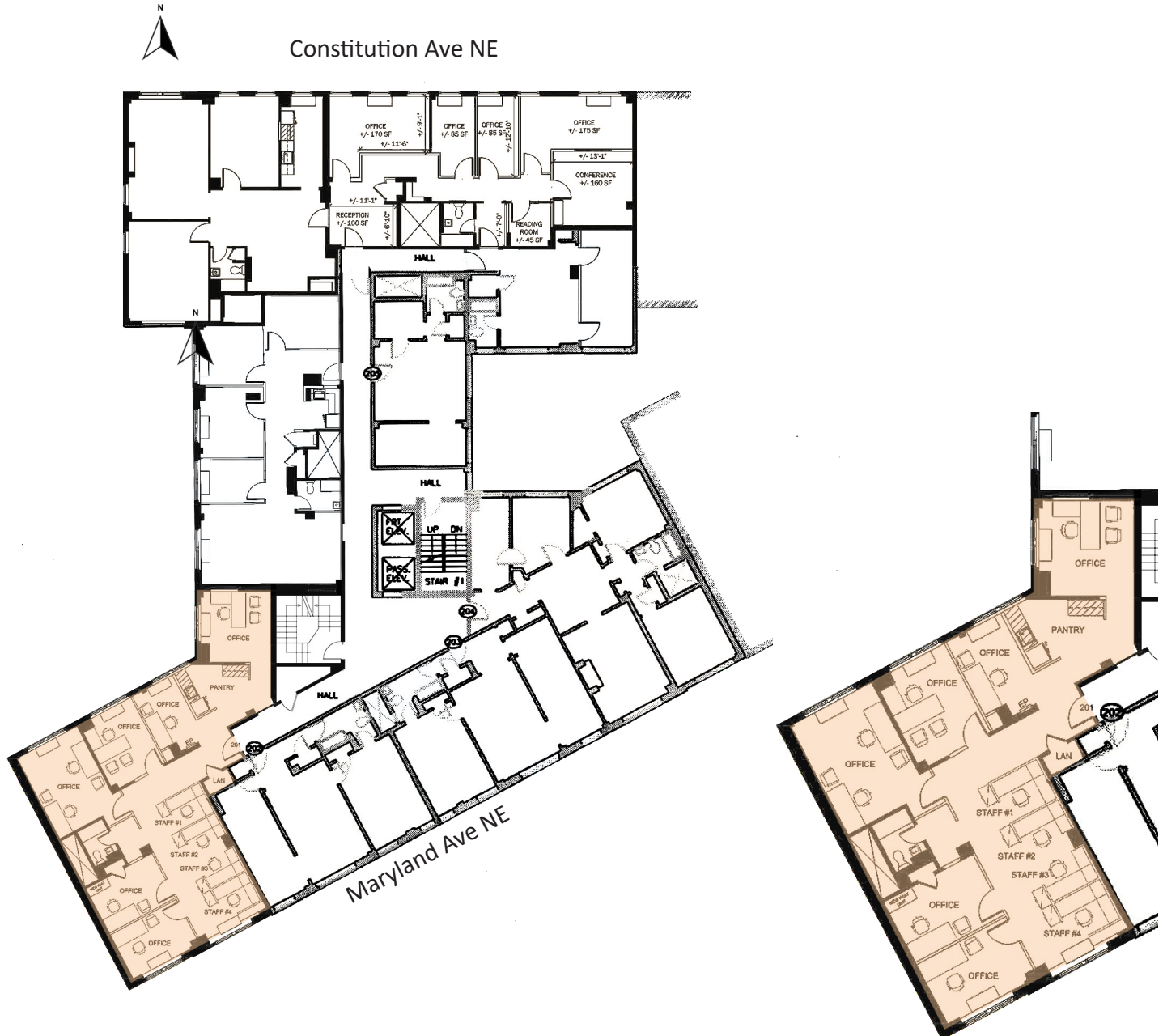
110 Maryland Ave NE

STOUT&TEAGUE

SUITE 201 1,832 RSF

2nd Floor | 1,832 RSF

- 2nd floor office suite
- Large open area for workstations/cubicles
- Storage/coat closet
- 6 private offices
- Private restroom



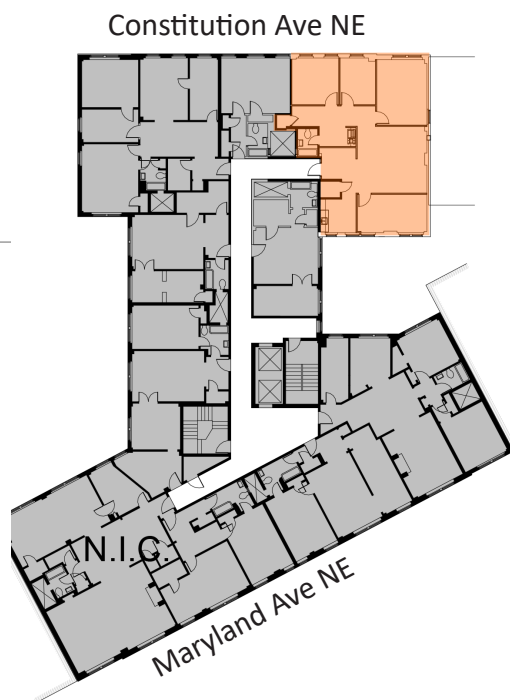
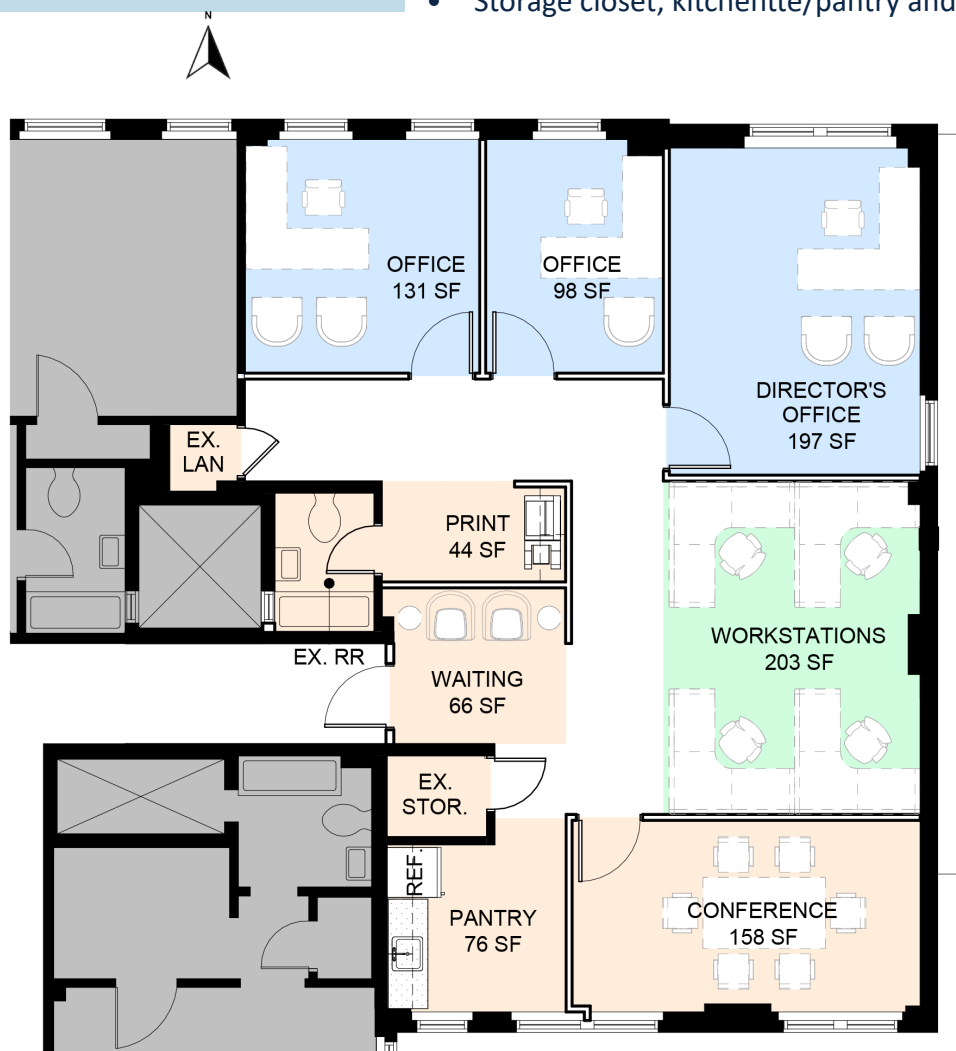
110 Maryland Ave NE

STOUT&TEAGUE

SUITE 406/407 1,375 RSF

4th Floor | 1,375 RSF

- Lovely first generation pre-built office suite
- Brand new finishes
- Private windowed offices
- Reception area
- Some open area
- Windowed conference room
- Storage closet, kitchenette/pantry and private restroom



110 Maryland Ave NE

STOUT&TEAGUE