



DOWNTOWN OFFICE WITH PARKING FOR LEASE

NEWLY REMODELED OFFICE SUITE



265 EAST 100 SOUTH, SALT LAKE CITY UTAH 84111

PROPERTY HIGHLIGHTS

- Suite 240: 5,713 SF Newly Remodeled Office
- Suite 300: 21,793 SF Divisible to 5,000 SF
- Ample Parking Available On-Site
- (1) Shared Dock High Door
- Crown Signage Available
- ADA Accessible with Elevator Access
- Nearby TRAX Access
- Located Downtown within the Central Business District

LEASE RATE: \$17.00/SF FULL SERVICE

DEMOGRAPHICS

	1 Mile	3 Mile	5 Mile
Population	15,537	57,003	92,298
Households	28,842	147,819	251,715
Avg. Household Income	\$71,948	\$86,374	\$89,001

TRAFFIC COUNTS

State Street: 31,000 Annual Average Daily Traffic

South Temple: 25,000 Annual Average Daily Traffic

CONTACT

801.617.1700

GAVIN PERRYMAN

JAMES MERRILL

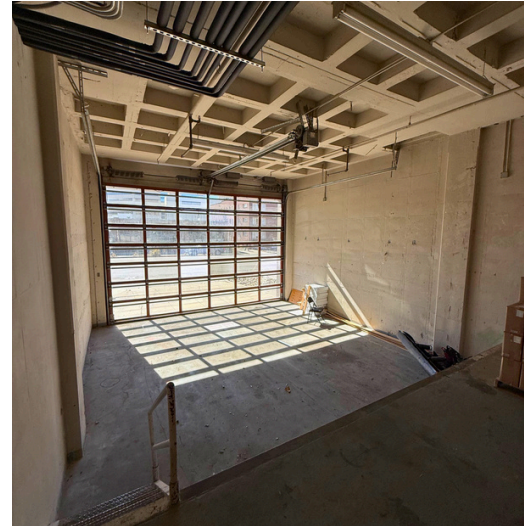
GAVIN.PERRYMAN@CRCNATIONWIDE.COM

JAMES.MERRILL@CRCNATIONWIDE.COM



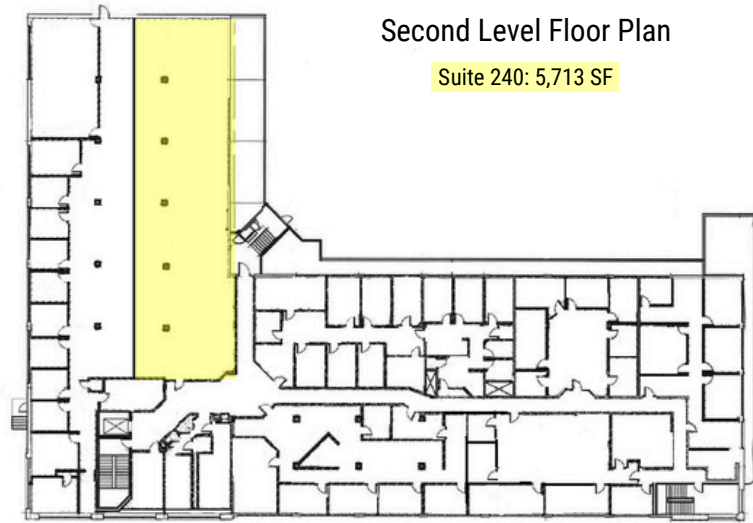
DOWNTOWN OFFICE WITH PARKING FOR LEASE

265 EAST 100 SOUTH, SALT LAKE CITY, UTAH 84111



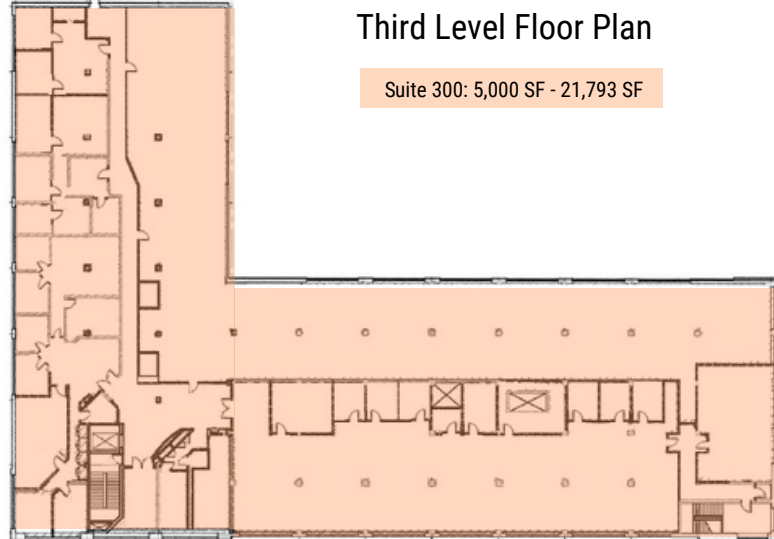
Second Level Floor Plan

Suite 240: 5,713 SF



Third Level Floor Plan

Suite 300: 5,000 SF - 21,793 SF



This information is given with the understanding that all negotiations and/or real estate activity related to the property described above shall be conducted through this cRc Nationwide office. The above information while not guaranteed, was obtained from sources we believe to be reliable.

CONTACT

801.617.1700

GAVIN PERRYMAN

JAMES MERRILL

GAVIN.PERRYMAN@CRCNATIONWIDE.COM

JAMES.MERRILL@CRCNATIONWIDE.COM