

2000 NW 133<sup>rd</sup> Avenue  
Unit 3 & 5  
Miami, FL 33178

# FOR LEASE AT BEACON LAKES



*For more information or to schedule a tour please  
contact:*

**Will Falero**  
[will.falero@proindustrialre.com](mailto:will.falero@proindustrialre.com)  
Mobile +1 786 389-3236

**Alex Caso**  
[alex.caso@proindustrialre.com](mailto:alex.caso@proindustrialre.com)  
Mobile +1 305 799-1560

Owned and Managed by:



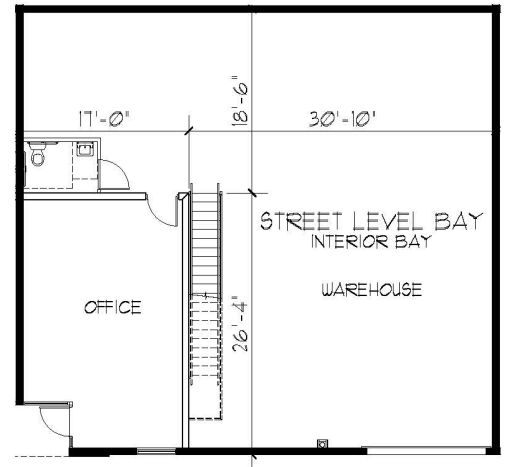
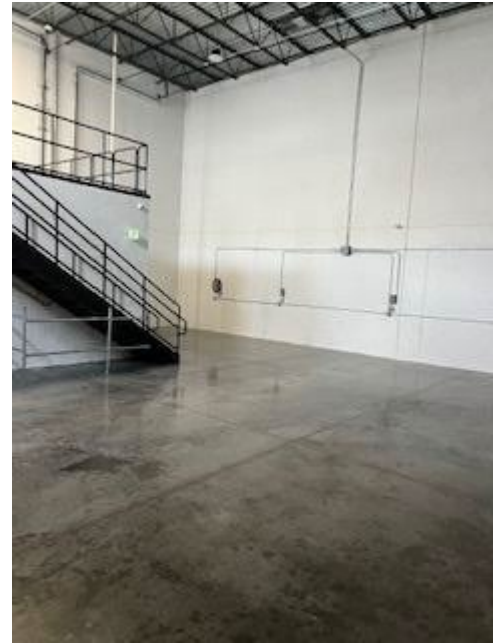
# FOR LEASE

Pro Industrial is pleased to exclusively offer the lease of 2000 NW 133<sup>rd</sup> Avenue, 2,580 – 5,160 SF industrial spaces with easy access to SR-836 Ext. via NW 137 Ave., FL. Turnpike via NW 12 St., NW 17 St., & NW 25 St. Within Beacon Lakes Industrial Park and adjacent to Dolphin & Miami Int'l Malls, Dolphin Expressway and major South Florida thoroughfares.

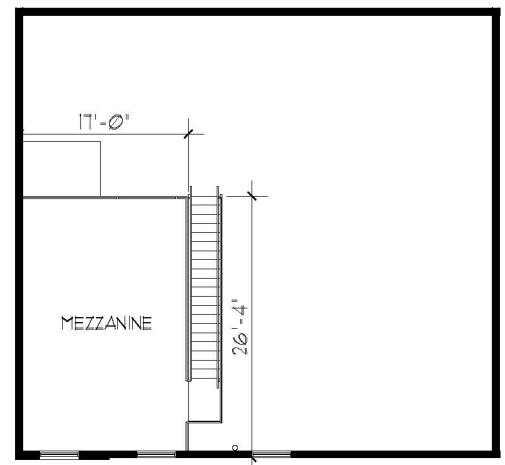
## PROPERTY FEATURES

**Address:** 2000 NW 133<sup>rd</sup> Avenue, Suite 3 & 5  
**Size:** 2,580 - 5,160 SF Available  
**Office:** 450 SF  
**Clear Height:** 26'  
**Loading:** One (1) Street level door  
**Lease Rate:** \$24.00 NNN  
**Availability:** Immediate

- Institutionally Owned
- Polished Concrete Warehouse Floor



Bay Building Floor Plan N.T.S.



Bay Mezzanine Floor Plan N.T.S.

*For more information or to schedule a tour please contact:*

**Will Falero**  
[will.falero@proindustrialre.com](mailto:will.falero@proindustrialre.com)  
Mobile +1 786 389-3236

**Alex Caso**  
[alex.caso@proindustrialre.com](mailto:alex.caso@proindustrialre.com)  
Mobile +1 305 799-1560

# 2000 NW 133<sup>rd</sup> Avenue, Miami, FL.

## LOCATION MAP

