

OFFICE SPACE FOR LEASE

OFFICE SPACE FOR LEASE IN PROVO

2545 N Canyon Road Provo, UT 84604

PROVO OFFICE SPACE

Located just across off of University Avenue in Provo! This professional office suite offers a premium location with excellent visibility and access.

Ideal for tech companies, professional services, medical administration, and more.

Multiple floor plan options available to suit your business needs. Come tour the space and see what fits best!



PROPERTY HIGHLIGHTS



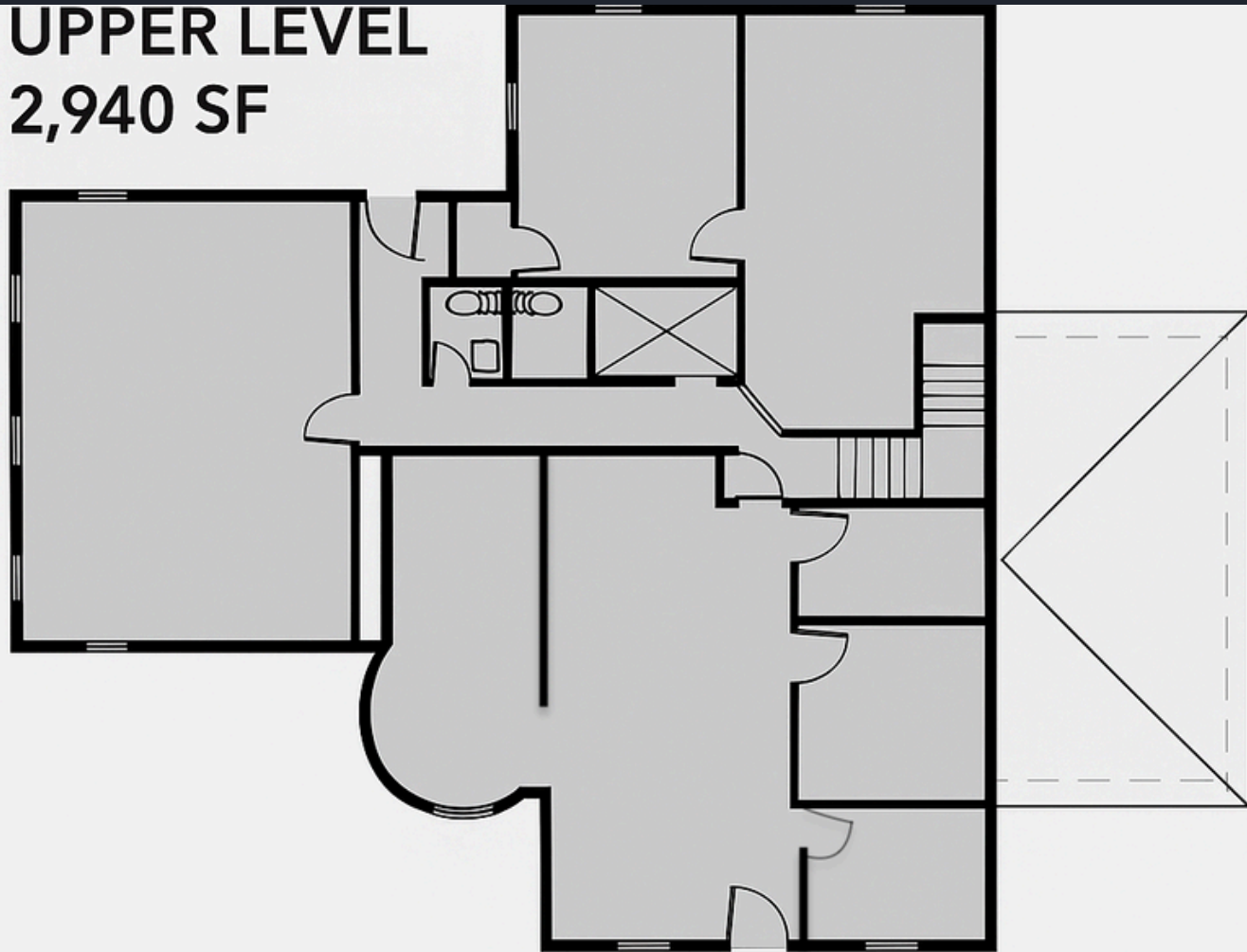
- > Rate: \$20 PSF Full Service Rate
- > 1st and 2nd Floor Availability
- > Different Layout Options Available
- > Elevator Access
- > 100 to 2,940 Square Feet Available
- > Beautiful Office Parking
- > Close to Riverside Country Club
- > Potential to grow into bigger units
- > Signage Available
- > Near BYU Campus





FLOORPLAN

UPPER LEVEL
2,940 SF

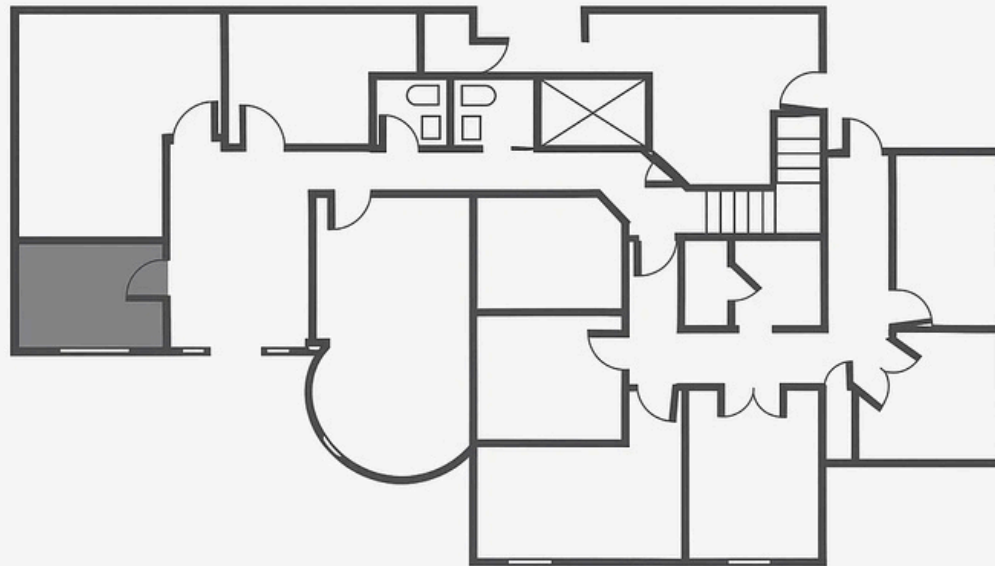


FLOORPLAN

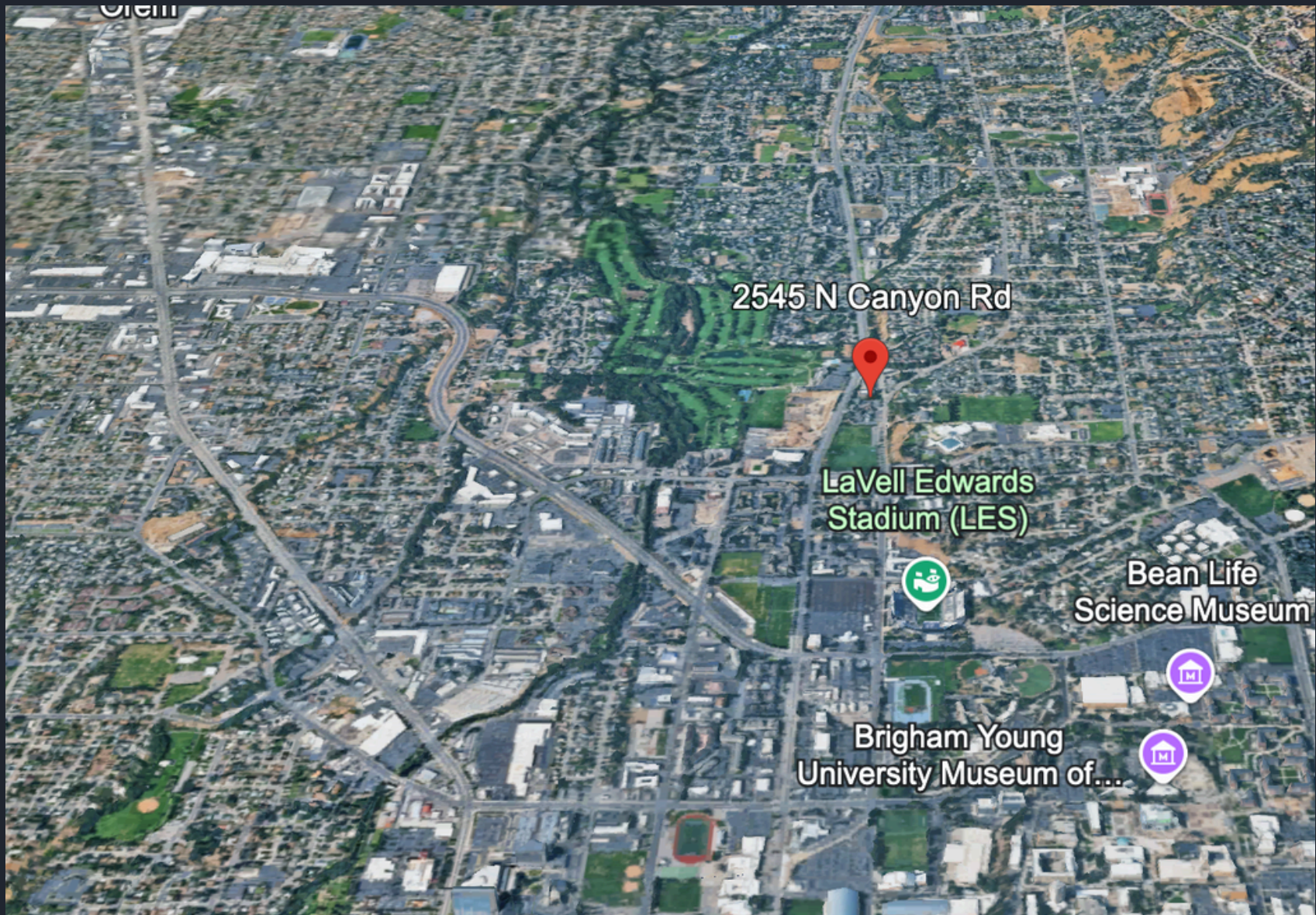
■ LEASED

■ AVAILABLE

MAIN FLOOR
3,571 SF



AERIAL VIEW



AERIAL VIEW



CONTACT US TODAY FOR A PRIVATE TOUR!

Caden Butterfield
Caden@Coreutah.com
385-350-1811



2545 N Canyon Road Provo, UT 84604

