

FOR LEASE

69-550
HIGHWAY 111
RANCHO MIRAGE, CA

± 913 SF Office Suite
\$1,195/Month MG

West Coast Modern
Furniture Now Open!

Up To
3 Months
Free Rent*

* Second floor office suites only.
Subject to credit approval. 2 year deal required.

Shawna Strange
sstrange@leedesert.com
760.346.2533
LIC #01718495

Shalyn Montes
smontes@leedesert.com
760.346.2523
LIC #01844043

 **LEE &
ASSOCIATES**
COMMERCIAL REAL ESTATE SERVICES

73000 Highway 111, Suite 200
Palm Desert, CA 92260
www.LeePalmDesert.com
Corp ID # 01911964



OFFICE SUITE AVAILABLE NOW!

- Excellent Highway 111 visibility, access and signage
- Architecturally significant building with new paint and new landscaping
- Newly remodeled second floor view office suites available
- A variety of uses will be considered
- Elevator served



All information furnished regarding property for sale, rental or financing is from sources deemed reliable, but no warranty or representation is made to the accuracy thereof and same is submitted subject to errors, omissions, change of price, rental or other conditions prior to sale, lease or financing or withdrawal without notice. No liability of any kind is to be imposed on the broker herein.



Suite 205 - 913 SF

\$1,195.00/MO MG

Rent does not include electricity or WiFi

- Corner Suite with excellent views
- Large reception area with 2 offices
- New carpet and paint

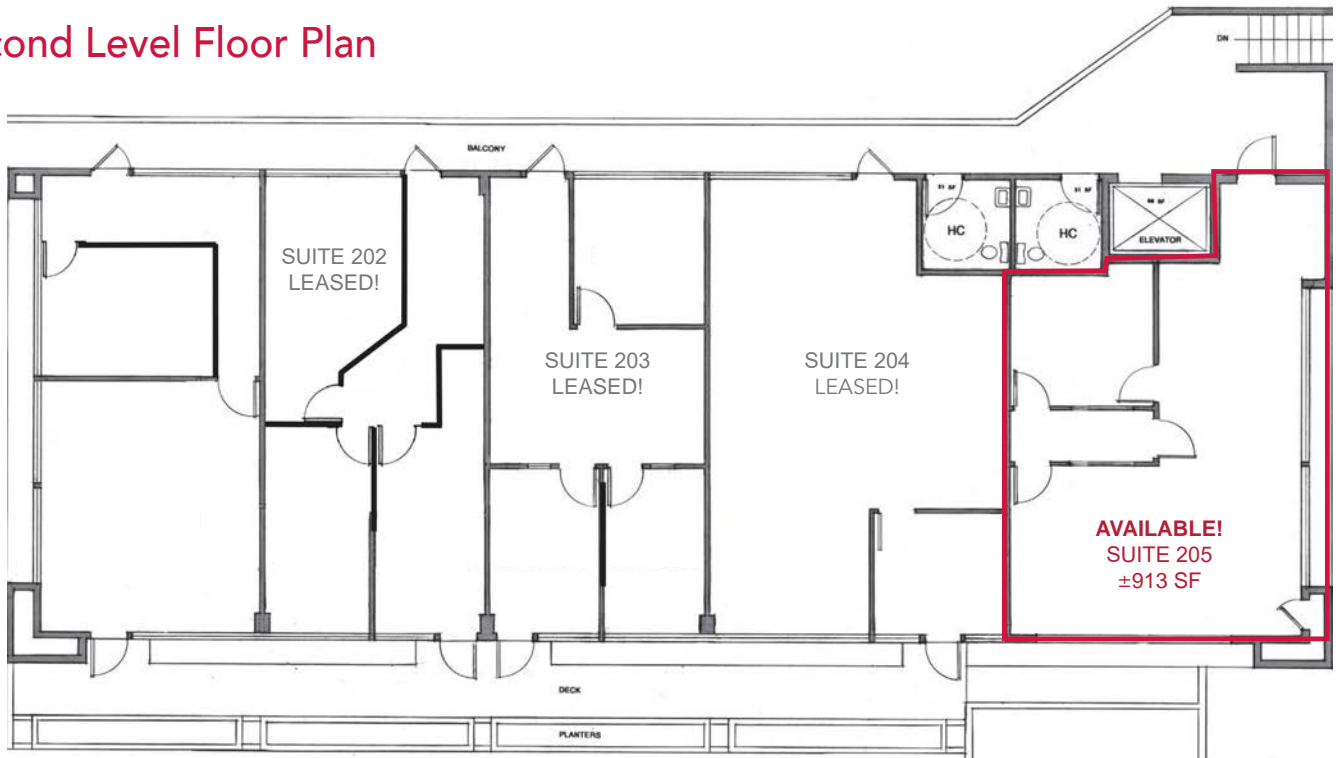


SUITE 205



SUITE 205

Second Level Floor Plan



LEE & ASSOCIATES
COMMERCIAL REAL ESTATE SERVICES

73000 Highway 111, Suite 200, Palm Desert, CA 92260

www.LeePalmDesert.com | Corp ID # 01911964

Shawna Strange
sstrange@leedesert.com
760.346.2533
LIC #01718495

Shalyn Montes
smontes@leedesert.com
760.346.2523
LIC #01844043

All information furnished regarding property for sale, rental or financing is from sources deemed reliable, but no warranty or representation is made to the accuracy thereof and same is submitted to errors, omissions, change of price, rental or other conditions prior to sale, lease or financing or withdrawal without notice. No liability of any kind is to be imposed on the broker