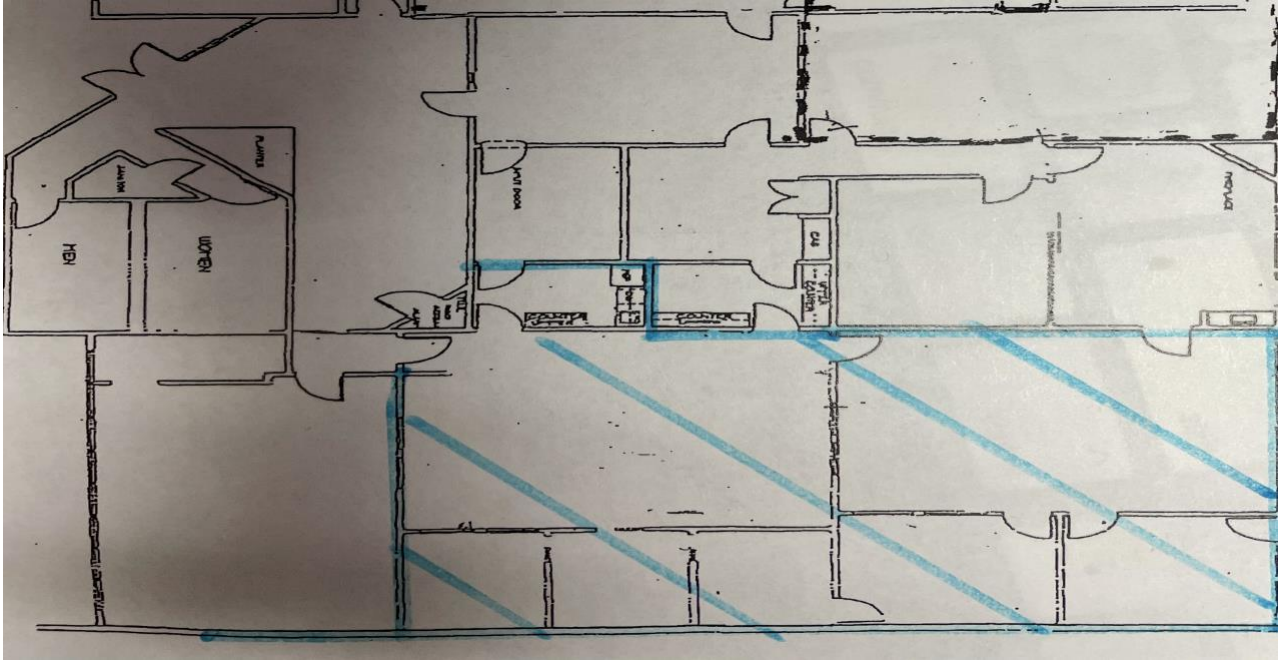


# HALLMARK PLAZA

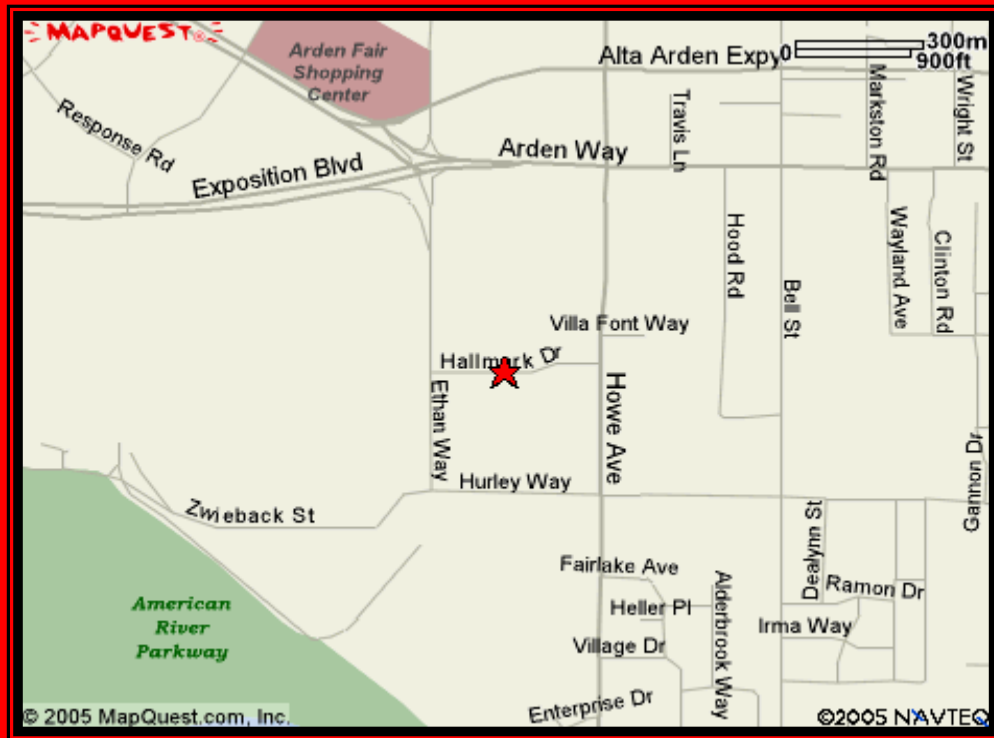
## 2041 HALLMARK DRIVE, SACRAMENTO, CA.

### Floor Plans



Hallmark Plaza Available Office Suites		
5/12/23		
Address	Suite Number	Square Footage
2045 Hallmark Drive	Suite 2	Approx 2000

**HALLMARK PLAZA  
2041 HALLMARK DRIVE,  
SACRAMENTO, CA.**



- *2000 Square Available*
- *Close Proximity to Cal Expo*
- *Great Tenant Mix of Working Professionals*
- *Property Management On-Site*

**For More Information Contact: Jeffrey Len @  
(916) 412-4772**

**IRC and Associates  
2041 Hallmark Drive  
Sacramento, Ca. 95825  
(916) 927-0997**

**HALLMARK PLAZA  
2041 HALLMARK DRIVE,  
SACRAMENTO, CA.**

**Amazing Office Space Available!!!**



*This Full Service office building is located near Sacramento's Business 80 in the Arden Mall Area. The prominent features of this building include great access to Business 80 and Highway 50, as well as, its close proximity to the Arden Mall and Downtown Sacramento. This building is also conveniently located near the Howe bout Arden shopping center and numerous restaurants.*

**FEATURES:**

- *Close Proximity to Business 80*
- *Close Proximity to Highway 50*
- *Great Lease Rate of \$1.10 to \$1.70 Per Square Foot*
- *Close Proximity to Downtown Sacramento*
- *Close Proximity to the Family Court House.*