

# AVAILABLE

Belmont Shopping Center  
1900 E 8 Mile, Detroit, MI 48234



## DETAILS

**Space Available** up to 9,930 SF  
70' x 129'

**Traffic Count (VPD)**

8 Mile Rd	56,052
Conant St	9,191
Dequindre St	6,493

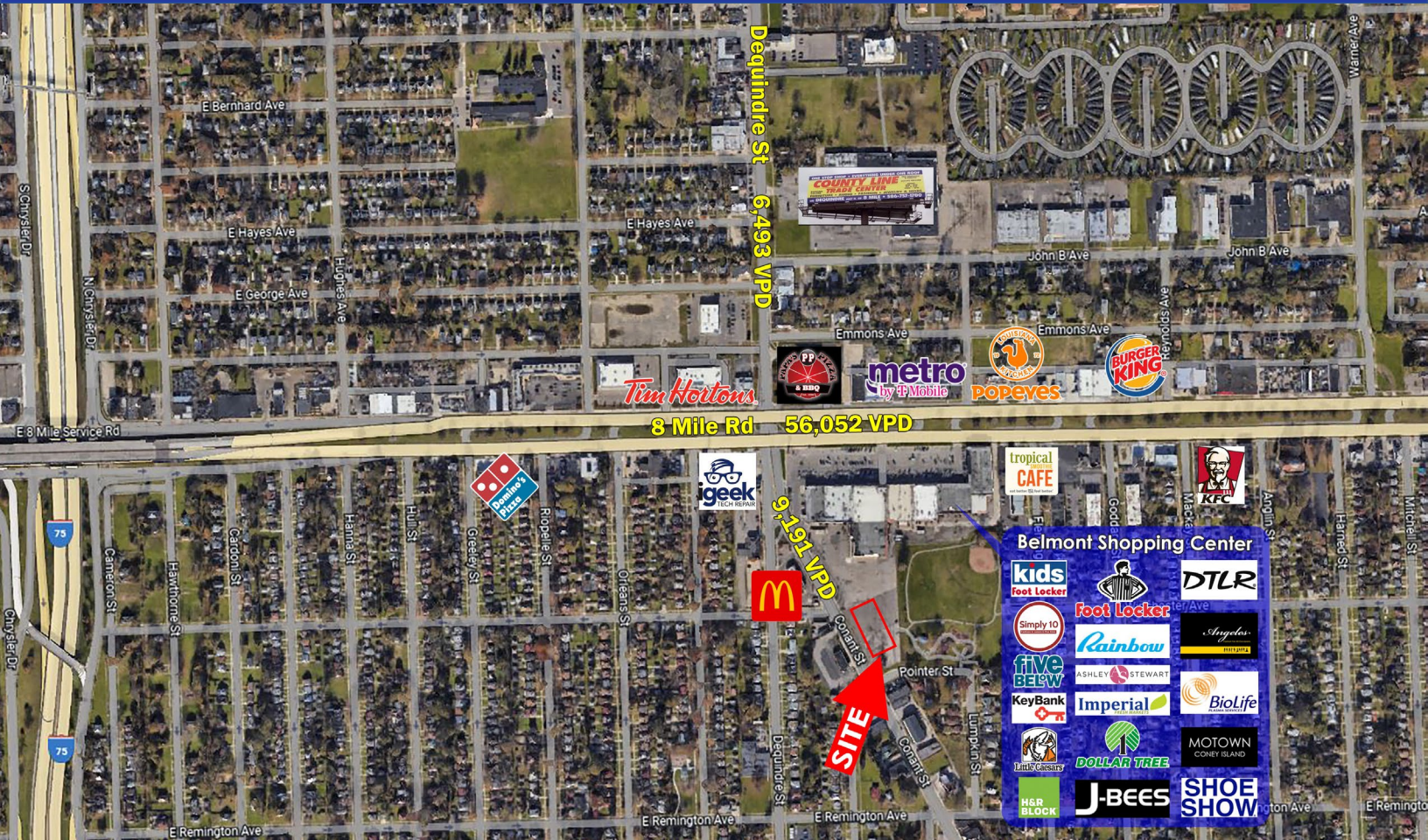


ALEX BIERI 313.552.4002 [alex@sbre1.com](mailto:alex@sbre1.com)



# AVAILABLE

Belmont Shopping Center  
1900 E 8 Mile, Detroit, MI 48234



## SITE INFO

PAD Available in Belmont Shopping Center:

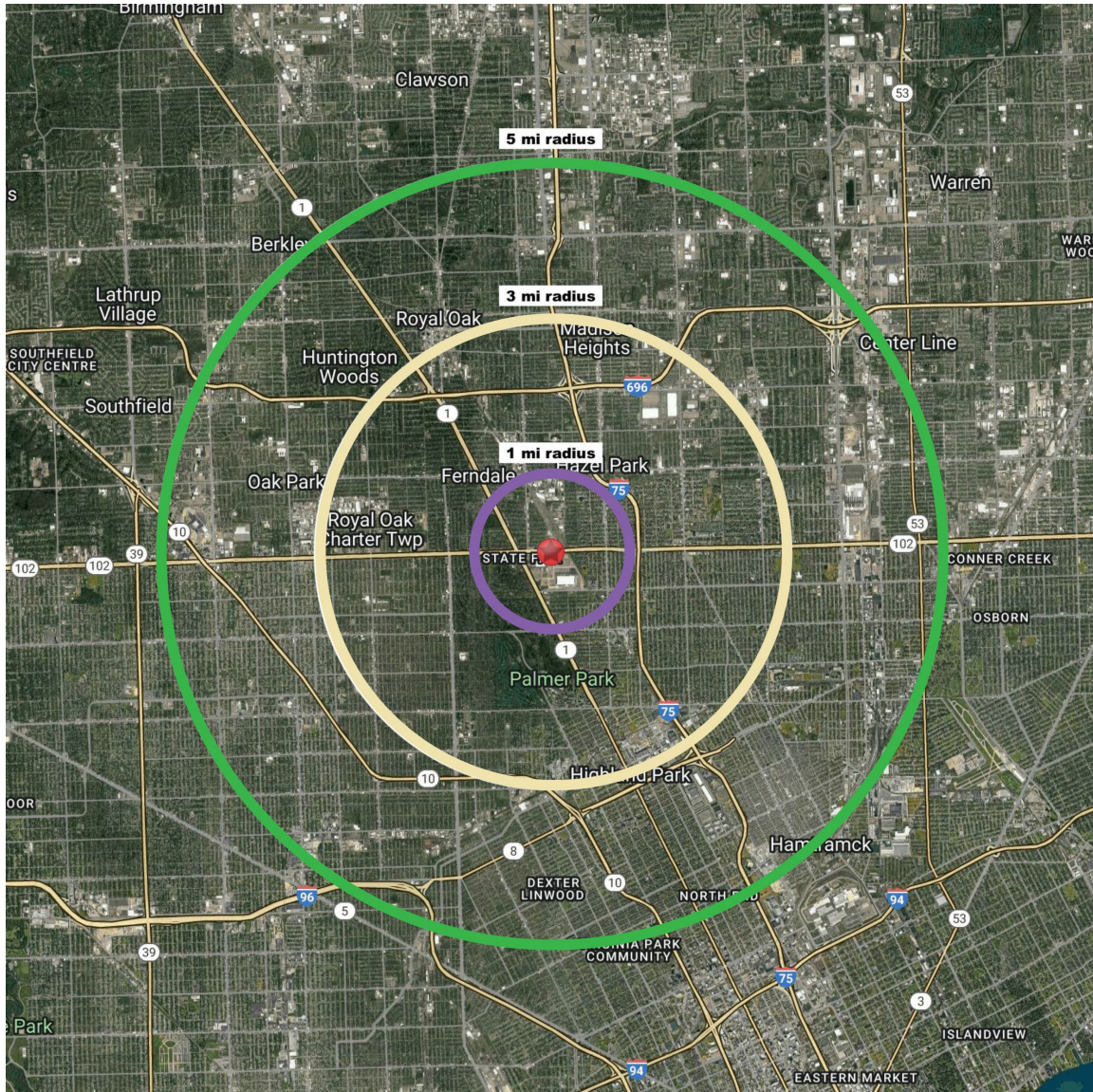
Belmont Shopping Center is a thriving retail center located at the SEQ of 8 Mile Rd and Dequindre and Conant in Detroit, MI. In fact, the average retailer at Belmont has been in the Shopping Center for 25 years. BioLife is a new anchor tenant that is opening in Belmont in 2023. BioLife will add to the already strong retail traffic at Belmont that includes a nice mix of local and national tenants. The center obviously has strong daily traffic from 8 Mile, as well as from the north/south thoroughfares of Dequindre and Conant. The pad site is improved, development ready and is ideally suited for a free-standing pad retail.

Link to drone video: <https://vimeo.com/manage/videos/851443947>

# AVAILABLE

Belmont Shopping Center  
1900 E 8 Mile, Detroit, MI 48234

## DEMOGRAPHICS



Area Demographics	1 Mile	3 Miles	5 Miles
Est Population (2024)	19,657	158,467	376,859
Average HH Income	\$72,599	\$52,812	\$64,102
Households	7,060	59,564	148,508
Median Age	32.4	33.8	36.6

Area Demographics	1 Mile	3 Miles	5 Miles
Total Businesses	463	4,267	11,326
Daytime Population	2,647	37,446	105,739

# AVAILABLE

Belmont Shopping Center  
1900 E 8 Mile, Detroit, MI 48234

## ADDITIONAL PHOTOS



Belmont Shopping Center  
1900 E 8 Mile, Detroit, MI 48234