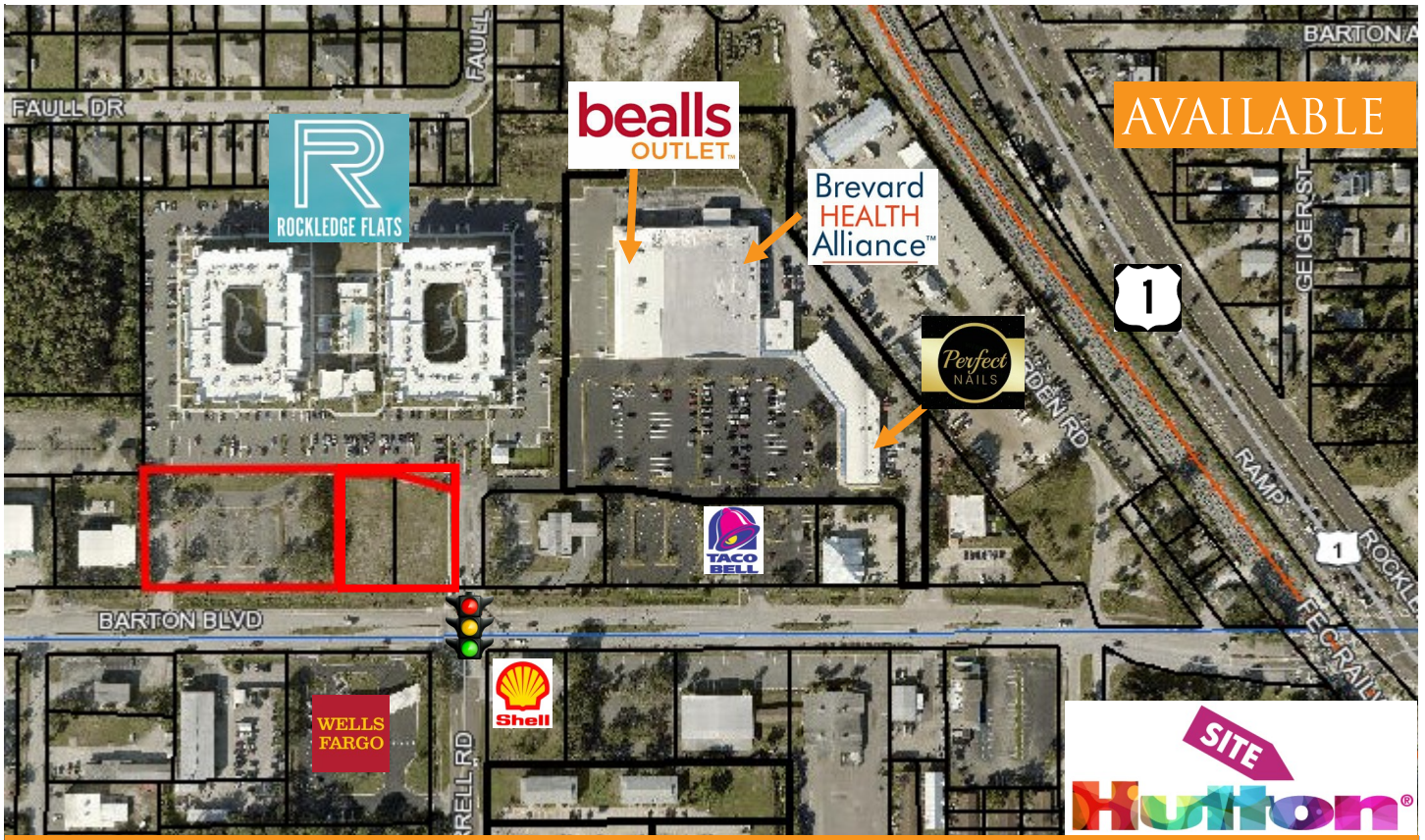


OUTPARCELS AVAILABLE

# BARTON COMMONS OUTPARCEL

Barton Blvd. at Murrell Road, Rockledge, FL 32955

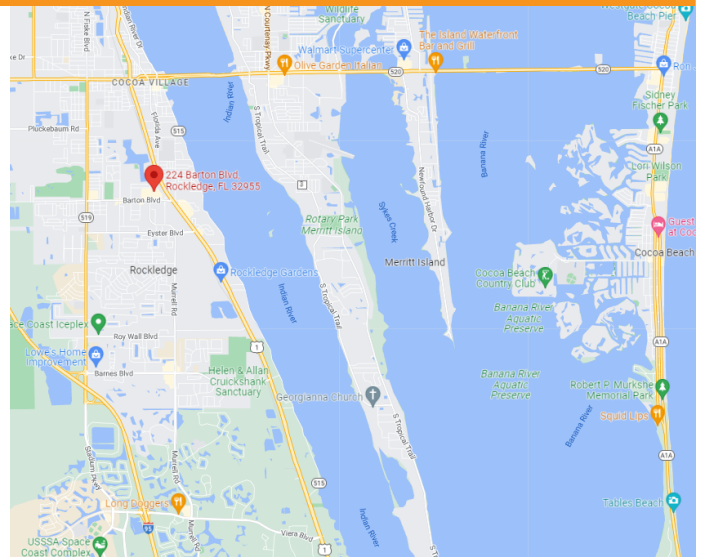


- Outparcel Land Lots in Rockledge!
- Join Bealls Outlet, Brevard Health Alliance, Taco Bell and other Retailers
- Easily Accessible from US-1
- Lighted Intersection at Barton Blvd & Murrell Road
- Adjacent to a 100% Leased Apartment Complex with 128 Units Bringing Traffic
- 3 Parcels Available
  - 1.33 Acres
  - 0.81 Acres
  - 0.52 Acres
- Zoning: C2 and RMU

Zoning Code Links:

[Redevelopment Mixed Use - RMU](#)

[General Commercial C2](#)



JMREALESTATE.COM



COMMERCIAL  
MANAGEMENT  
LEASING  
SALES

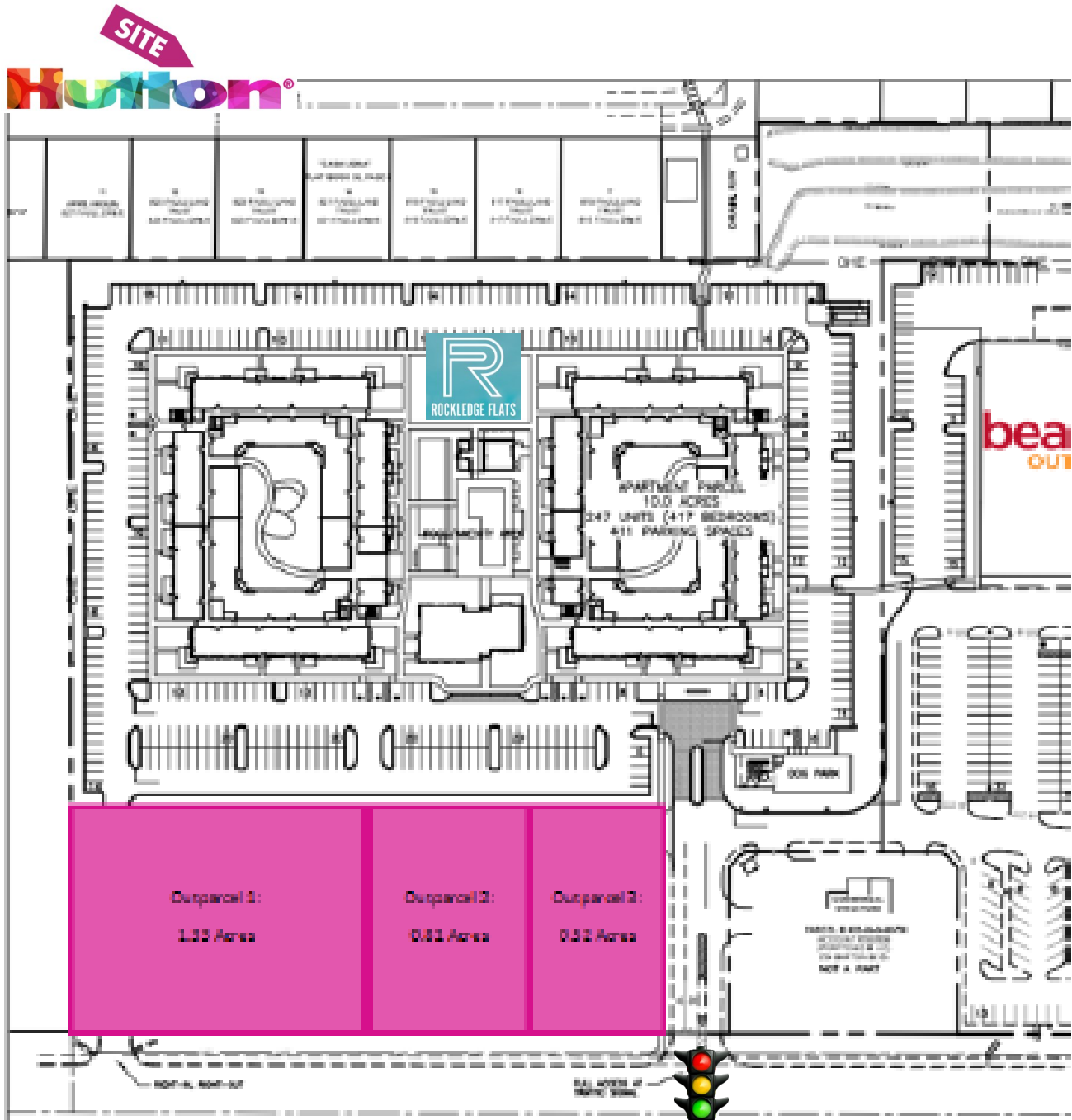
**Courtney Smith**  
JM Real Estate, Inc.  
321.242.2882  
Cell: 321.423.4305  
Courtney@JMRealEstate.com

Information contained herein has been obtained from others and is considered to be reliable; however, a prospective purchaser, agent, or lessee is expected to verify all information to their satisfaction. We make no guarantee, warranty, or representations herein. Licensed Real Estate Broker.

OUTPARCELS AVAILABLE

# BARTON COMMONS OUTPARCEL

Barton Blvd. at Murrell Road, Rockledge, FL 32955



JMREALESTATE.COM



COMMERCIAL  
MANAGEMENT  
LEASING  
SALES

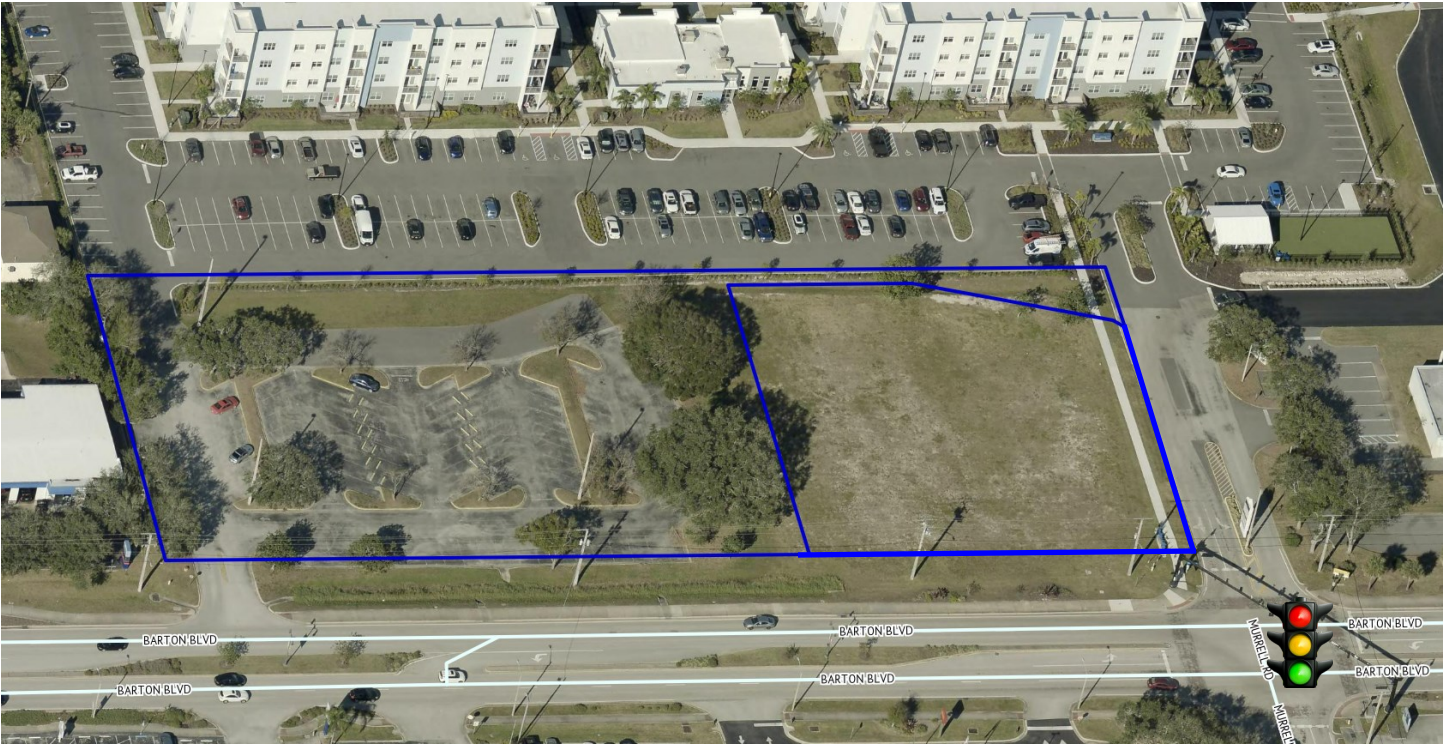
**Courtney Smith**  
JM Real Estate, Inc.  
321.242.2882  
Cell: 321.423.4305  
Courtney@JMRealEstate.com

Information contained herein has been obtained from others and is considered to be reliable; however, a prospective purchaser, agent, or lessee is expected to verify all information to their satisfaction. We make no guarantee, warranty, or representations herein. Licensed Real Estate Broker.

OUTPARCELS AVAILABLE

# BARTON COMMONS OUTPARCEL

Barton Blvd. at Murrell Road, Rockledge, FL 32955



| DEMOGRAPHICS         | 1 mile   | 3 mile   | 5 mile   |
|----------------------|----------|----------|----------|
| 2022 Population      | 7,163    | 47,995   | 96,756   |
| 2027 Pop Projection  | 7,648    | 51,577   | 103,829  |
| Growth 2022-2027     | 1.4%     | 1.5%     | 1.5%     |
| Median Age           | 46       | 44.7     | 45.9     |
| Bachelor's or Higher | 28%      | 27%      | 27%      |
| Average Income       | \$81,139 | \$75,999 | \$78,438 |



JMREALESTATE.COM



COMMERCIAL  
MANAGEMENT  
LEASING  
SALES

**Courtney Smith**  
JM Real Estate, Inc.  
321.242.2882  
Cell: 321.423.4305  
Courtney@JMRealEstate.com

Information contained herein has been obtained from others and is considered to be reliable; however, a prospective purchaser, agent, or lessee is expected to verify all information to their satisfaction. We make no guarantee, warranty, or representations herein. Licensed Real Estate Broker.