



STARBOARD CRE
LOCAL • INDEPENDENT • ENTREPRENEURIAL

BAR • TAVERN • CAFE

FOR LEASE

606 Mission Street
San Francisco, CA 94105

Javier Rodriguez

javier@starboardcre.com
CELL: 408.677.8362

STARBOARDCRE.COM

49 POWELL STREET 4th Floor, SAN FRANCISCO, CA 94102

ENTRY VIEW

For Lease

READY FOR IMMEDIATE OPERATION!

Size: ±1,083 SF incl. Basement Storage

Rent: NEGOTIALBE – Inquire

Terms: Negotiable

Use: Bar, Tavern, Cafe, Restaurant

This information has been secured by Starboard CRE from sources believed to be reliable. It is not guaranteed and should be verified before closing any transaction.

STARBOARD CRE
LOCAL • INDEPENDENT • ENTREPRENEURIAL

HIGHLIGHTS

For Lease

- 7 ft. Type 2 Hood suitable for baking & steaming
- 22 ft. Bar top, seating for up to 12 patrons
- Basement Storage with Elevator access
- Single ADA accommodating restroom
- 3 compartment sink & dishwasher
- Outdoor dining capable with patio heaters
- 8 Faucet beer kegerator, including keg storage
- Select FF&E Included - no Key Money



This information has been secured by Starboard CRE from sources believed to be reliable. It is not guaranteed and should be verified before closing any transaction.

STARBOARD CRE
LOCAL • INDEPENDENT • ENTREPRENEURIAL

COOKING & PREP SPACE

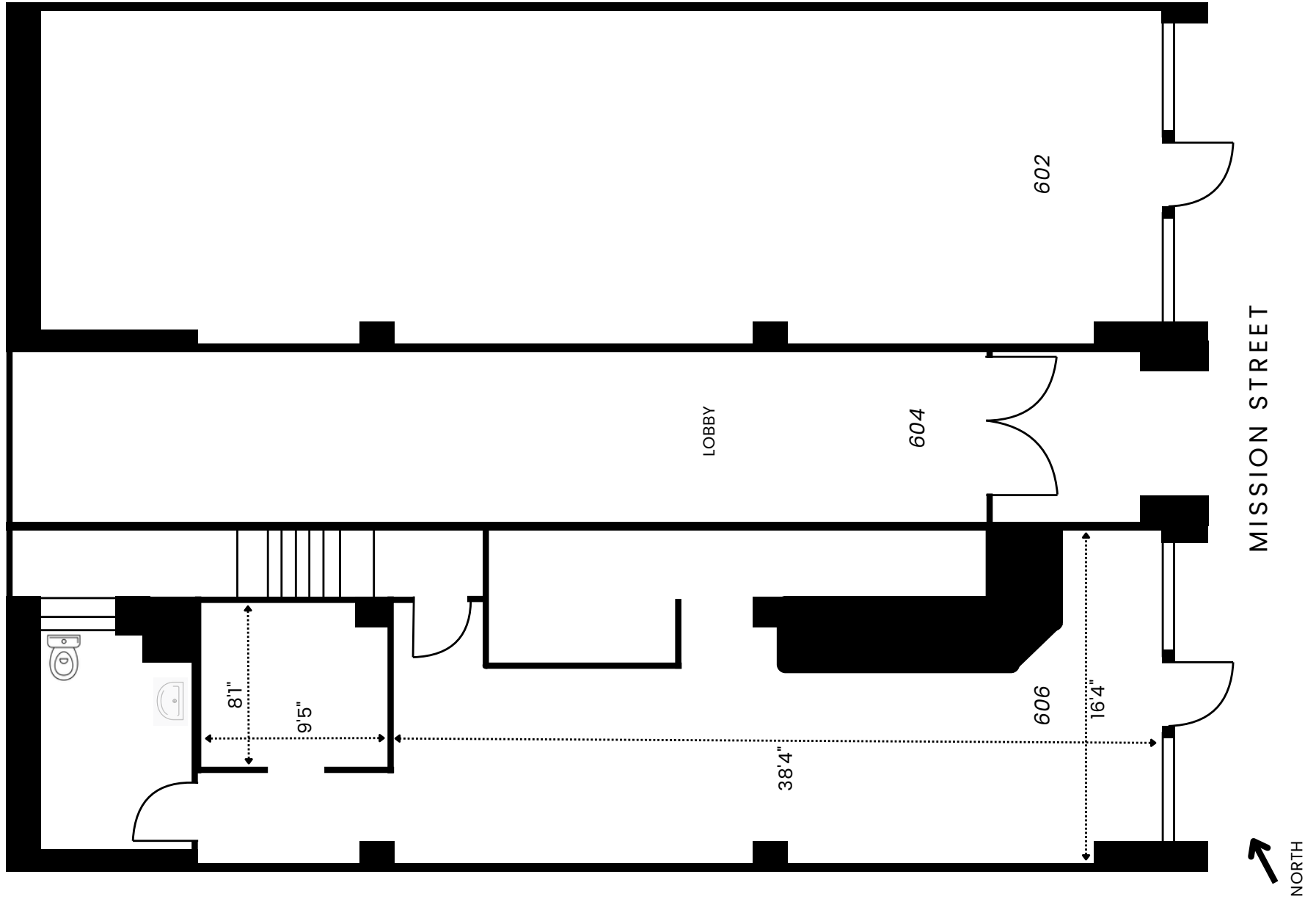
For Lease



This information has been secured by Starboard CRE from sources believed to be reliable. It is not guaranteed and should be verified before closing any transaction.

STARBOARD CRE
LOCAL • INDEPENDENT • ENTREPRENEURIAL

FLOORPLAN



This information has been secured by Starboard CRE from sources believed to be reliable. It is not guaranteed and should be verified before closing any transaction.

LOCAL RETAILERS

Bike Score
84

Transit Score
100

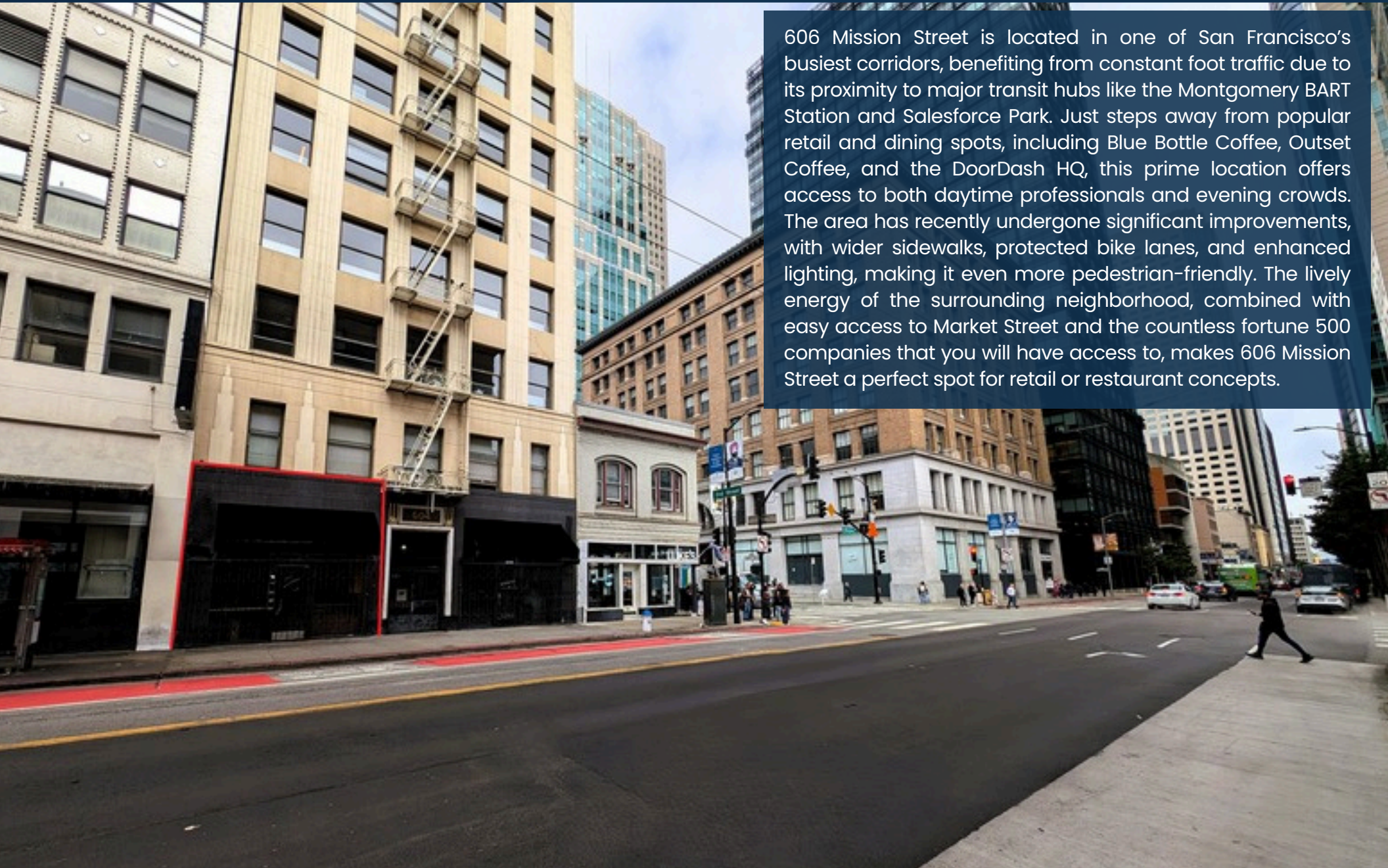
Walk Score
98



This information has been secured by Starboard CRE from sources believed to be reliable. It is not guaranteed and should be verified before closing any transaction.

STREET VIEW

For Lease



606 Mission Street is located in one of San Francisco's busiest corridors, benefiting from constant foot traffic due to its proximity to major transit hubs like the Montgomery BART Station and Salesforce Park. Just steps away from popular retail and dining spots, including Blue Bottle Coffee, Outset Coffee, and the DoorDash HQ, this prime location offers access to both daytime professionals and evening crowds. The area has recently undergone significant improvements, with wider sidewalks, protected bike lanes, and enhanced lighting, making it even more pedestrian-friendly. The lively energy of the surrounding neighborhood, combined with easy access to Market Street and the countless fortune 500 companies that you will have access to, makes 606 Mission Street a perfect spot for retail or restaurant concepts.

This information has been secured by Starboard CRE from sources believed to be reliable. It is not guaranteed and should be verified before closing any transaction.

STARBOARD CRE
LOCAL • INDEPENDENT • ENTREPRENEURIAL

TEAM



Javier Rodriguez

Retail Services

javier@starboardcre.com

CELL: 408.677.8362

CA DRE #02212025

Call

View Profile

This information has been secured by Starboard CRE from sources believed to be reliable. It is not guaranteed and should be verified before closing any transaction.

STARBOARD CRE
LOCAL • INDEPENDENT • ENTREPRENEURIAL



STARBOARD CRE
LOCAL • INDEPENDENT • ENTREPRENEURIAL

STARBOARDCRE.COM
49 POWELL STREET, SAN FRANCISCO, CA 94102



Unique Vision

We see what others miss

Local Market Leader

No one knows Northern
California like we do

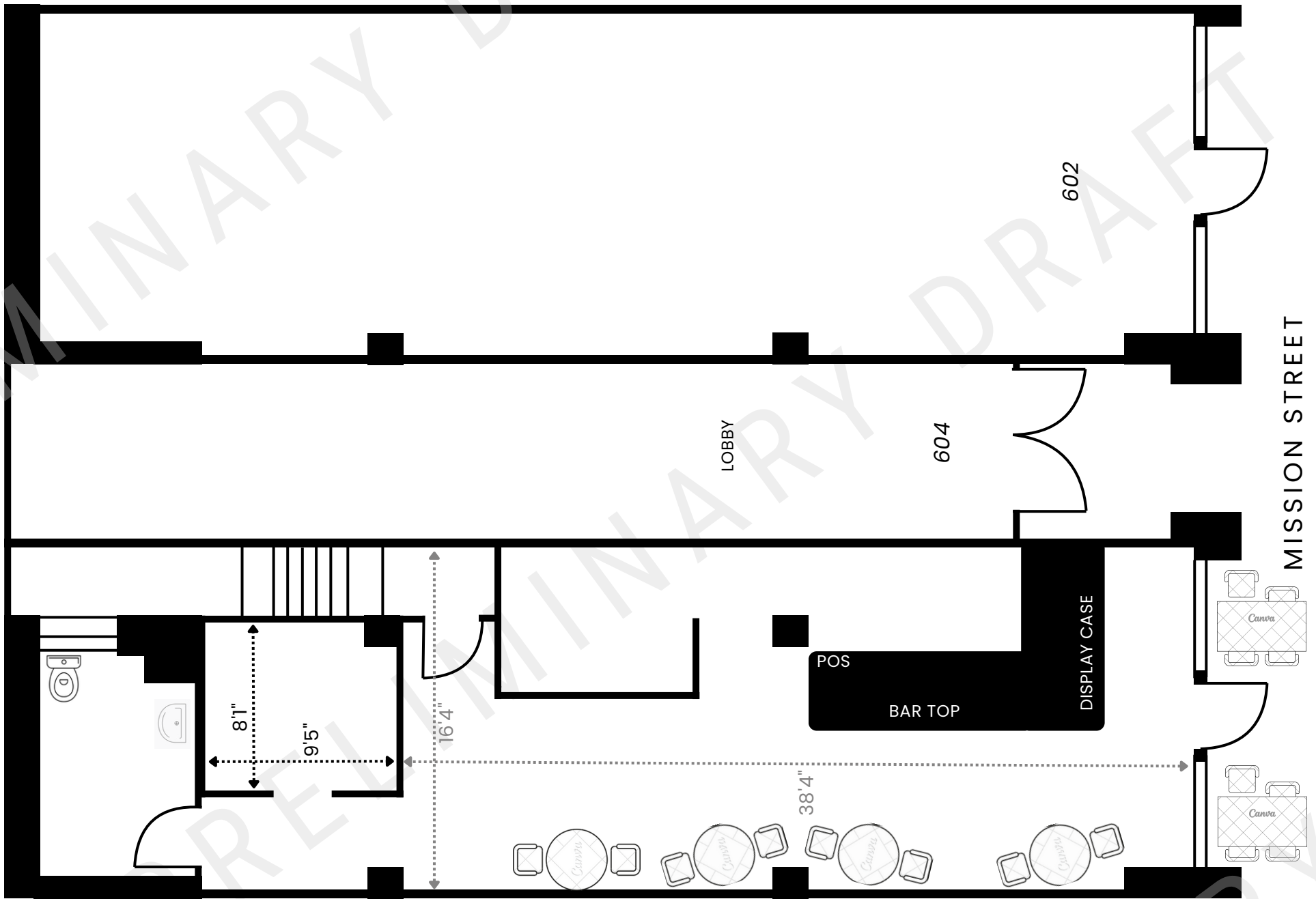
Full-Service Firm

We do it all

Locally based, and technology-forward, our brokers are highly qualified experts backed by a full-service, in-house support team who understand the intricacies of San Francisco real estate. Starboard CRE brings decades of brokerage experience representing over 600 million square feet of space with an aggregate lease value of over 10 billion and investments sold over 3 billion.

CA DRE# 01103056





*REVISIONS AND CHANGES MAY OCCUR DURING THE COURSE OF THE BUILDOUT.