



1770 Worldwide Boulevard

Hebron, Kentucky

Key facts	
Property type	Industrial space
Building size	199,345 SF
Space available	157,345 SF



Property Features

91,400 SF Available 12/1/2026

Year Built: 2004

Clear Height: 28'

Dock Doors: 26 (expandable to 19)

Building Dimensions: 230' to 250' x 820'

Car Parking: 181

Lighting: LED

65,945 SF available 3/1/2027

Site Area: 14.39 acres

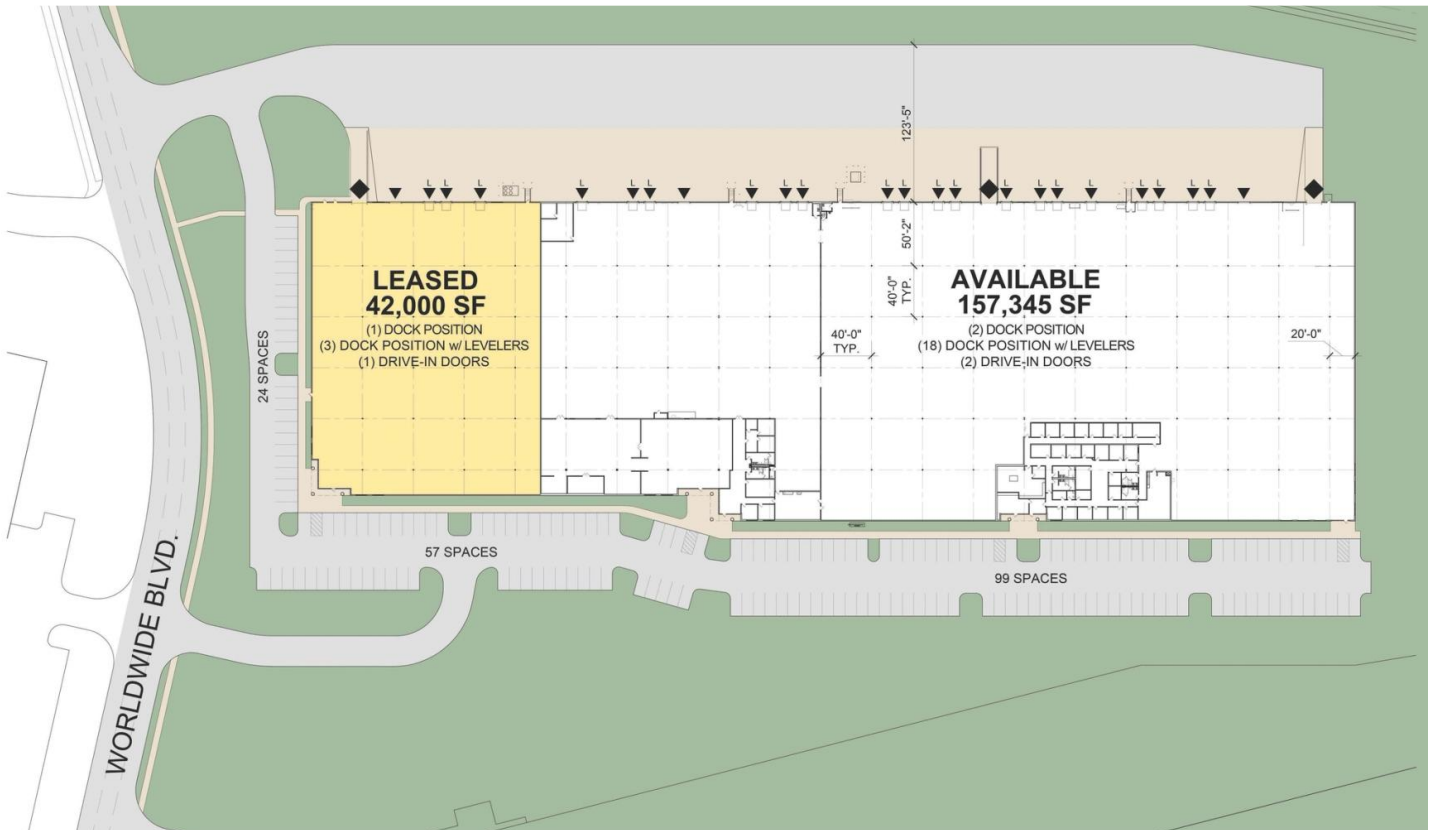
Column Spacing: 40' x 40' (50' speed bays)

Drive-In Doors: 3

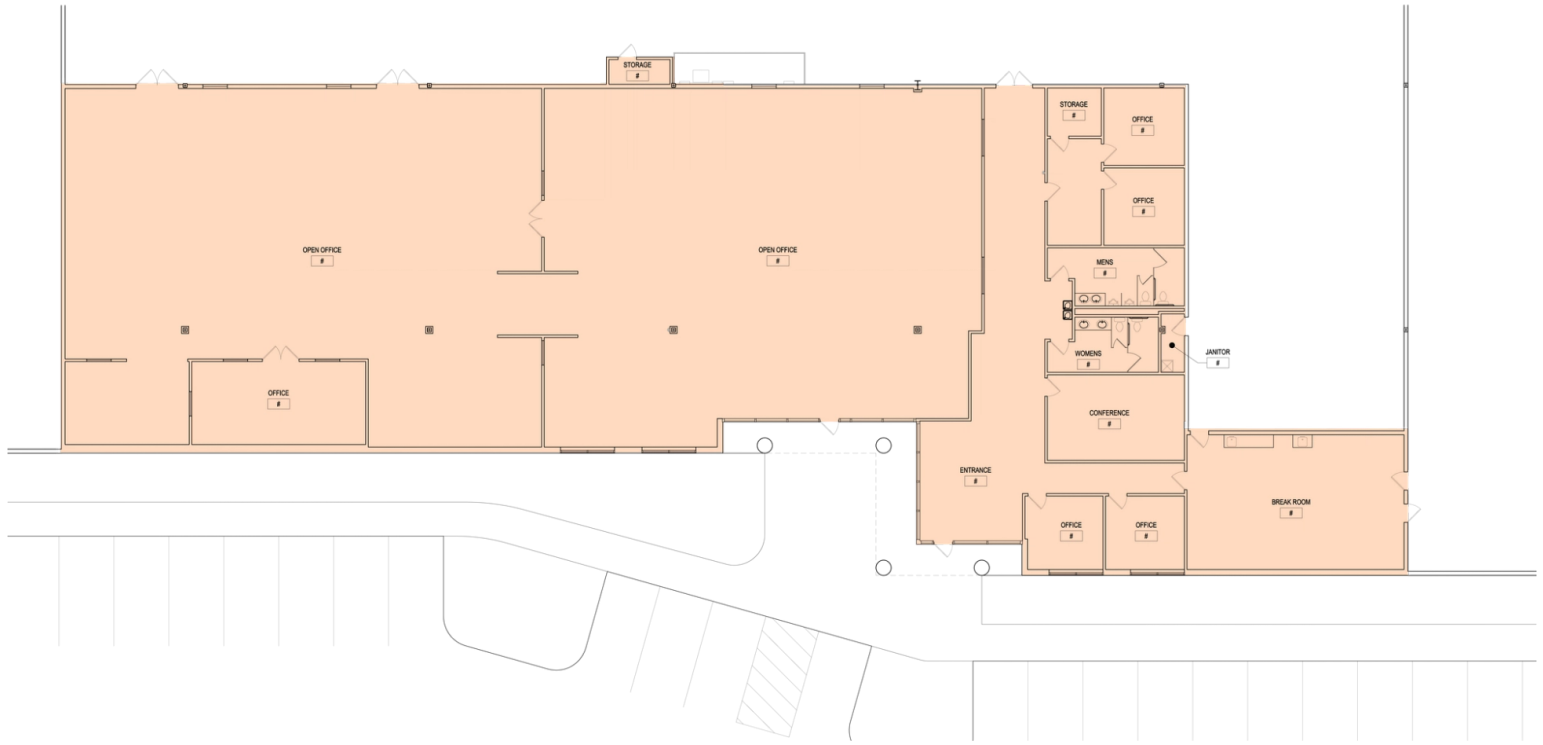
Truck Court Depth: 125'

Fire Protection: ESFR sprinkler system

Tilt-Up Concrete construction



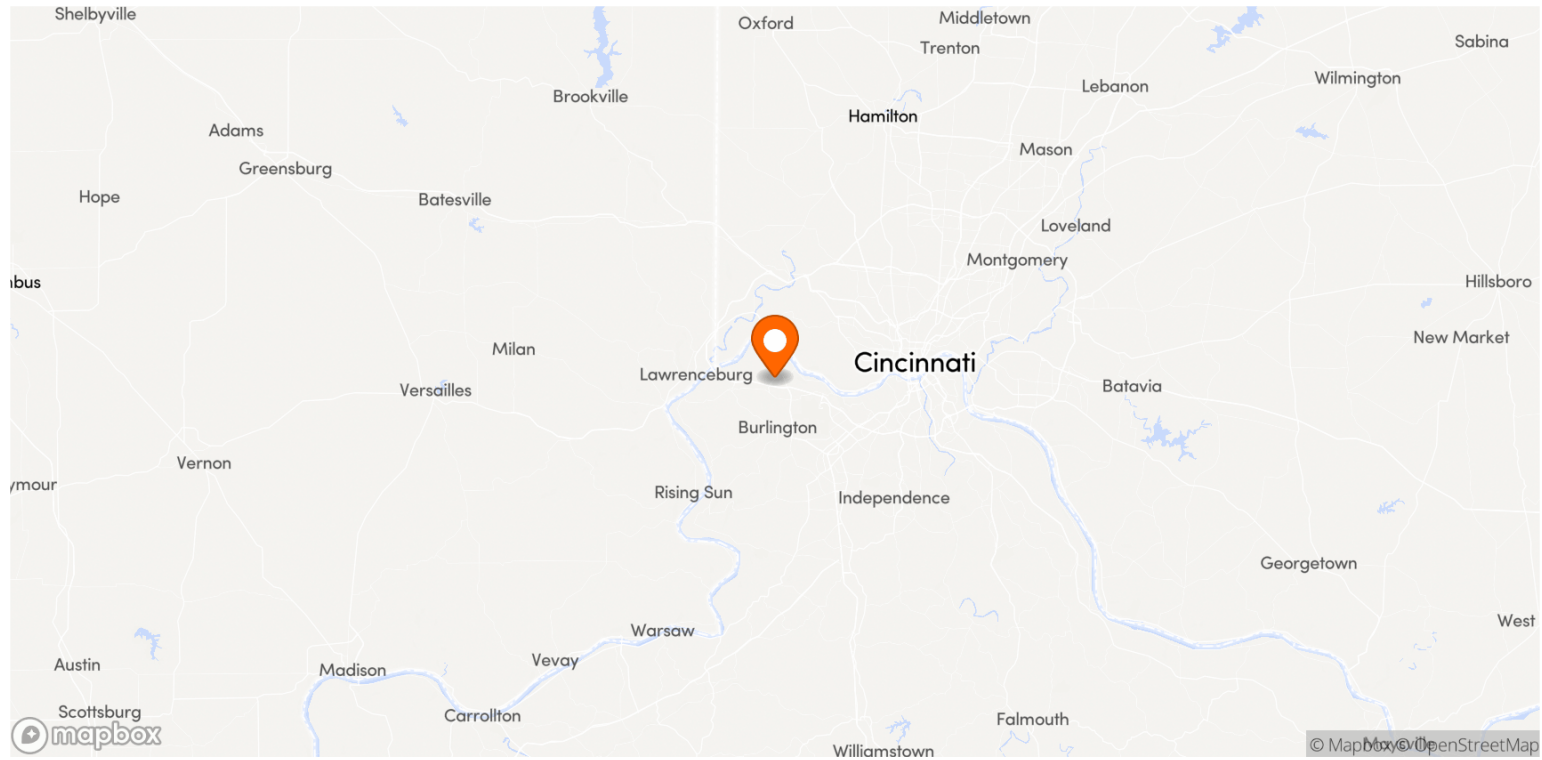
OFFICE PLAN A - 12,375 SF



OFFICE PLAN B - 8,750 SF



Location



Contact us

Learn more about this property or schedule a tour by reaching out to our local investment and leasing officer.



Chris Simons

+1 (330) 697-9131
chris.simons@eqtpartners.com



Aaron Schmidt

+1 (860) 713-3901
aaron.schmidt@eqtpartners.com