



STATION HOUSE
W A L N U T C R E E K



“The work of today is the history of tomorrow, and we are its makers.”

- JULIETTE GORDON LOW





In the heart of Walnut Creek, the historic depot finds new life as a community gathering space. Station House is a space that celebrates artisans, retailers, and chefs in a setting designed to bring people together.

The depot shop spaces provide flexibility for a variety of size configurations and uses . Opportunities exist around quick and full service dining, entertainment, retail, and service space.

At Station House, you'll discover a wide array of thoughtfully curated shopping and dining experiences.



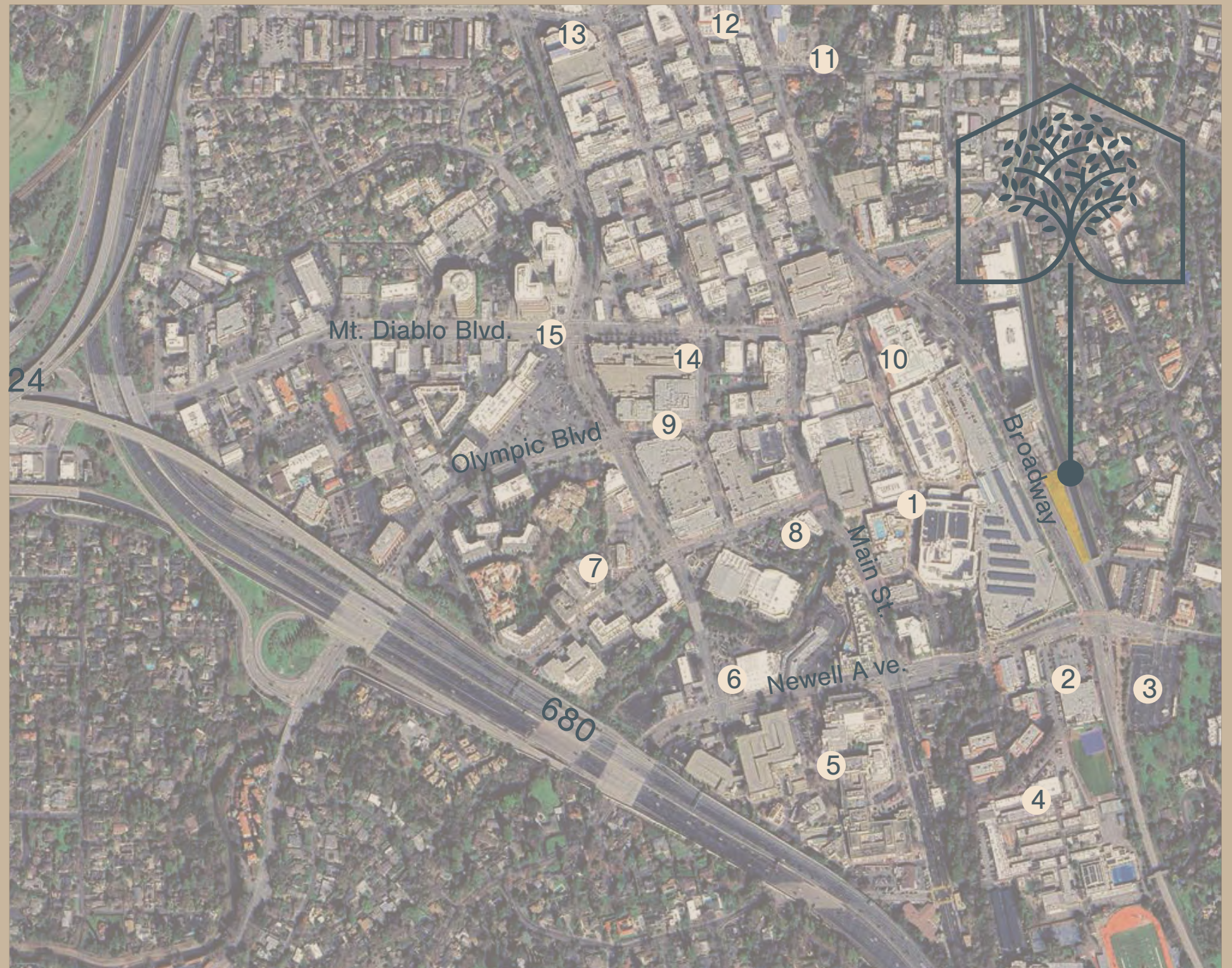


STATION HOUSE

WALNUT CREEK, CALIFORNIA

ESTABLISHED 1891

RE-ESTABLISHED SOON



- | | | |
|-------------------------|-----------------------------|----------------------------|
| 1 Broadway Plaza | 7. Alma Park | 13. Leshner Center of Arts |
| 2 Whole Foods | 8. Gott's Roadside | 14. Shake Shack |
| 3 Park and Ride | 9. Cinemark Century Theater | 15. Plaza Walnut Creek |
| 4 Las Lomas High School | 10. Nordstrom | |
| 5 Kaiser Permanente | 11. Walnut Creek | |
| 6 Trader Joes | 12. City Hall | |



THE LATHHOUSE

*PHASE 2 PENDING



THE DEPOT

NOW LEASING



THE YARD

*PHASE 2 PENDING

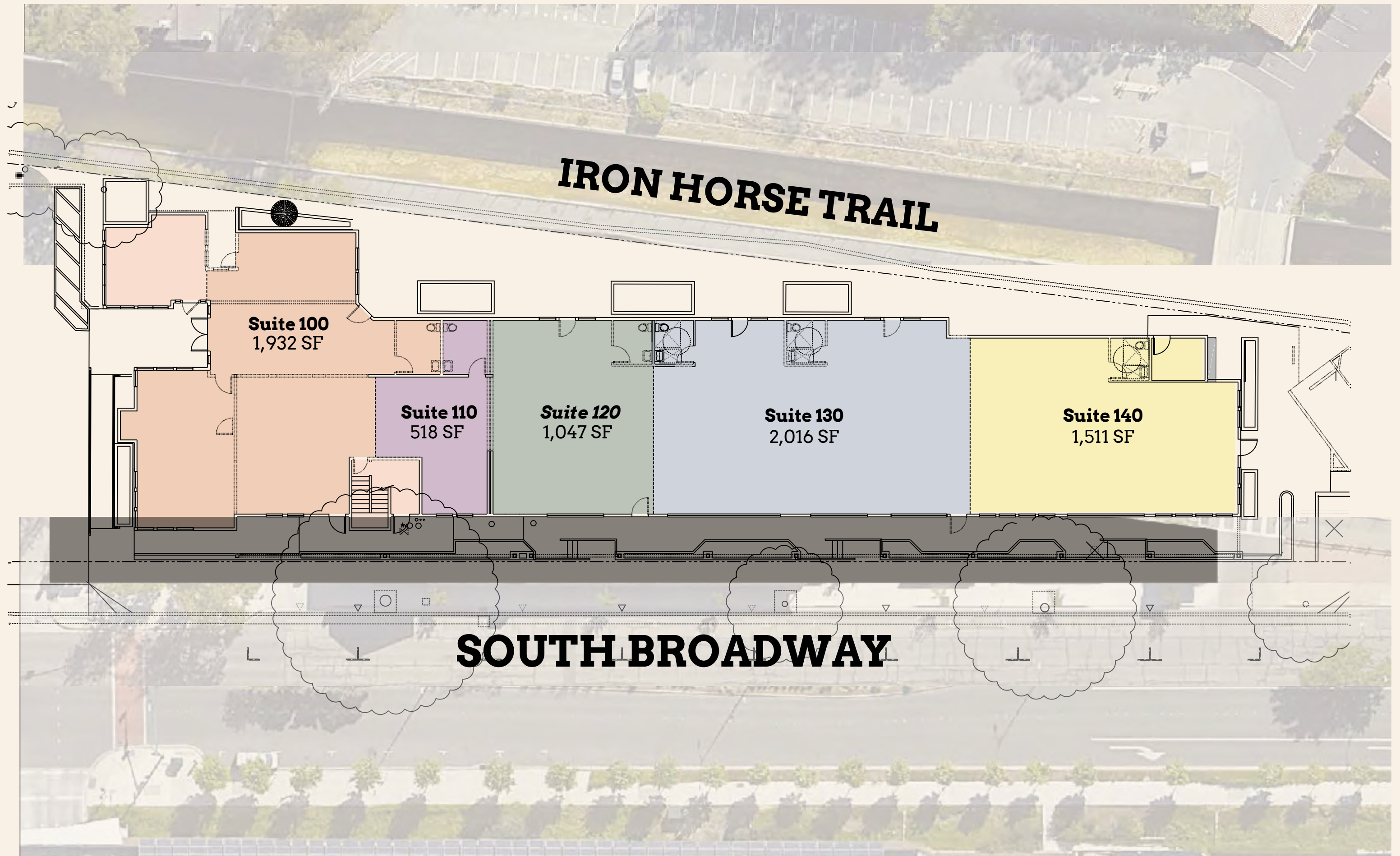


SHOPS

A LOCAL SHOWCASE

Station House is a collective of artisans and merchants gathered to create a community space that will showcase the best of Walnut Creek. Visitors will experience one of a kind local operators in an environment that celebrates the old and the new.





***SPACES MAY BE COMBINED OR DEMISED | 8,752 +/- SQFT**

depot

Incorporate rail details into the design of building and landscape to reinforce the history of Walnut Creek Depot.

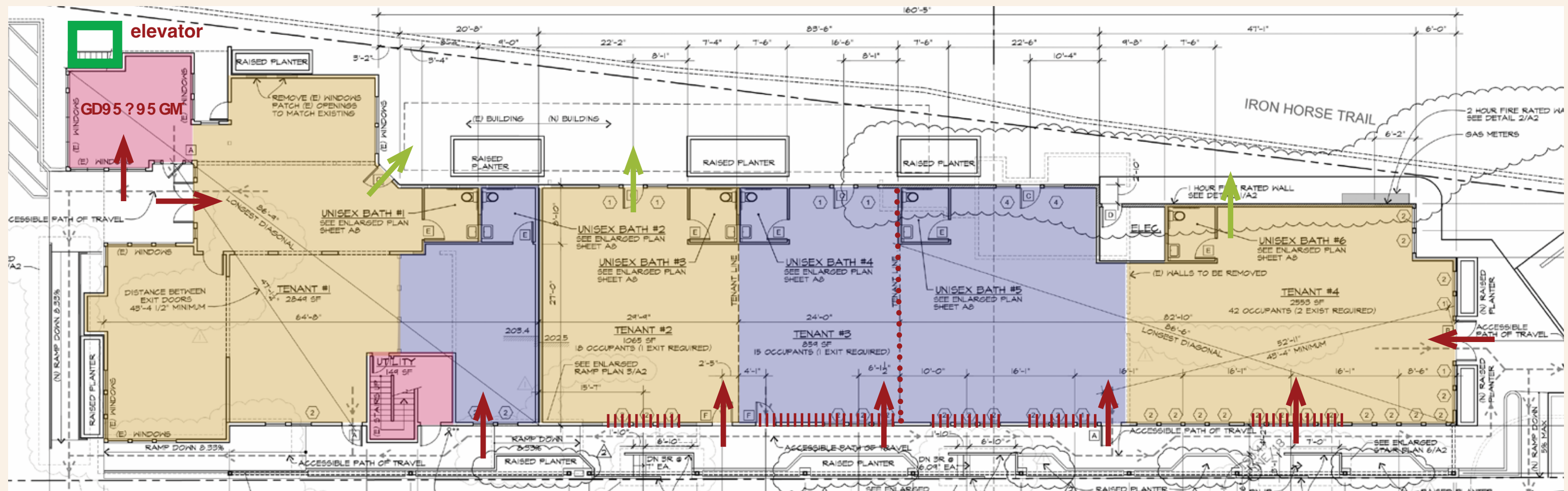




**PROPOSED
NEW
STOREFRONTS
AND FINISHES**



||||||| **NEW FULL HEIGHT STOREFRONTS**





DESIGN

The design of Station House blends a respectful treatment of the historic depot building with a modern lathhouse designed to blur the lines between inside and out. Simple vernacular forms and graceful architectural detailing create a sense of timelessness for a space intended to become an institution for the community of Walnut Creek.



“We shape our buildings—
thereafter, they shape us.”

– WINSTON CHURCHILL







new greenhouse/lathhouse



deck with dining on rail
overlooks garden, trail & creek



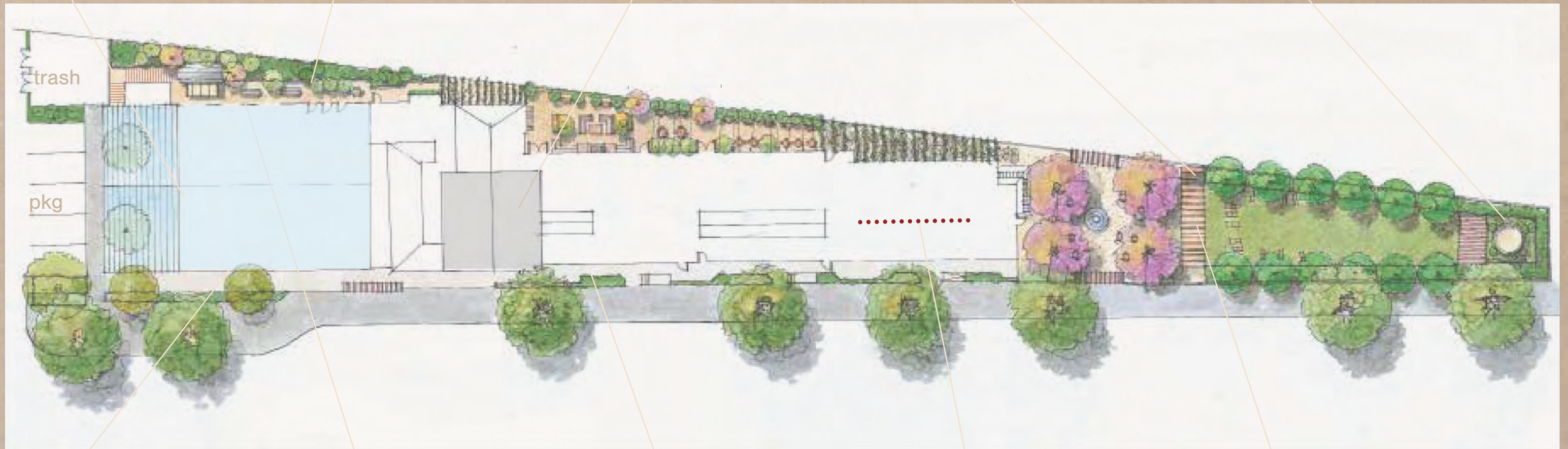
highlighted details on historic
depot building



small garden kiosk built into
trellis next to event lawn



tankhouse tower at corner



trash

pkg



side of greenhouse opens to
Broadway



large openings connect
lathhouse to garden



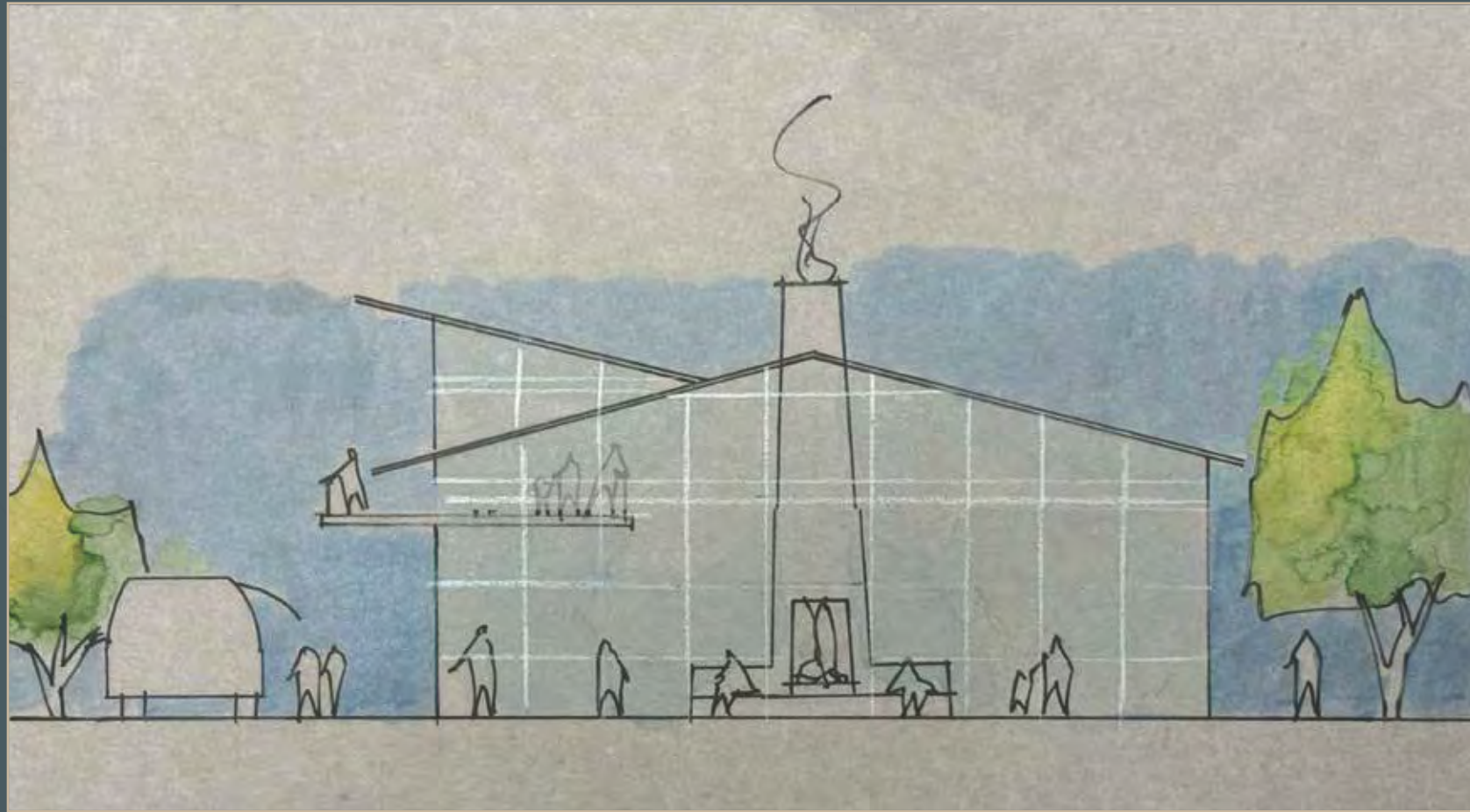
updated historical detailing



ridge mounted station house sign



trellis at event lawn with pivot
doors for private events



THE LATHHOUSE

- mezzanine looking into ground floor dining area
- garage doors open to backyard with trailer bar.
- deck extends past building edge overlooking garden





THE GARDENS

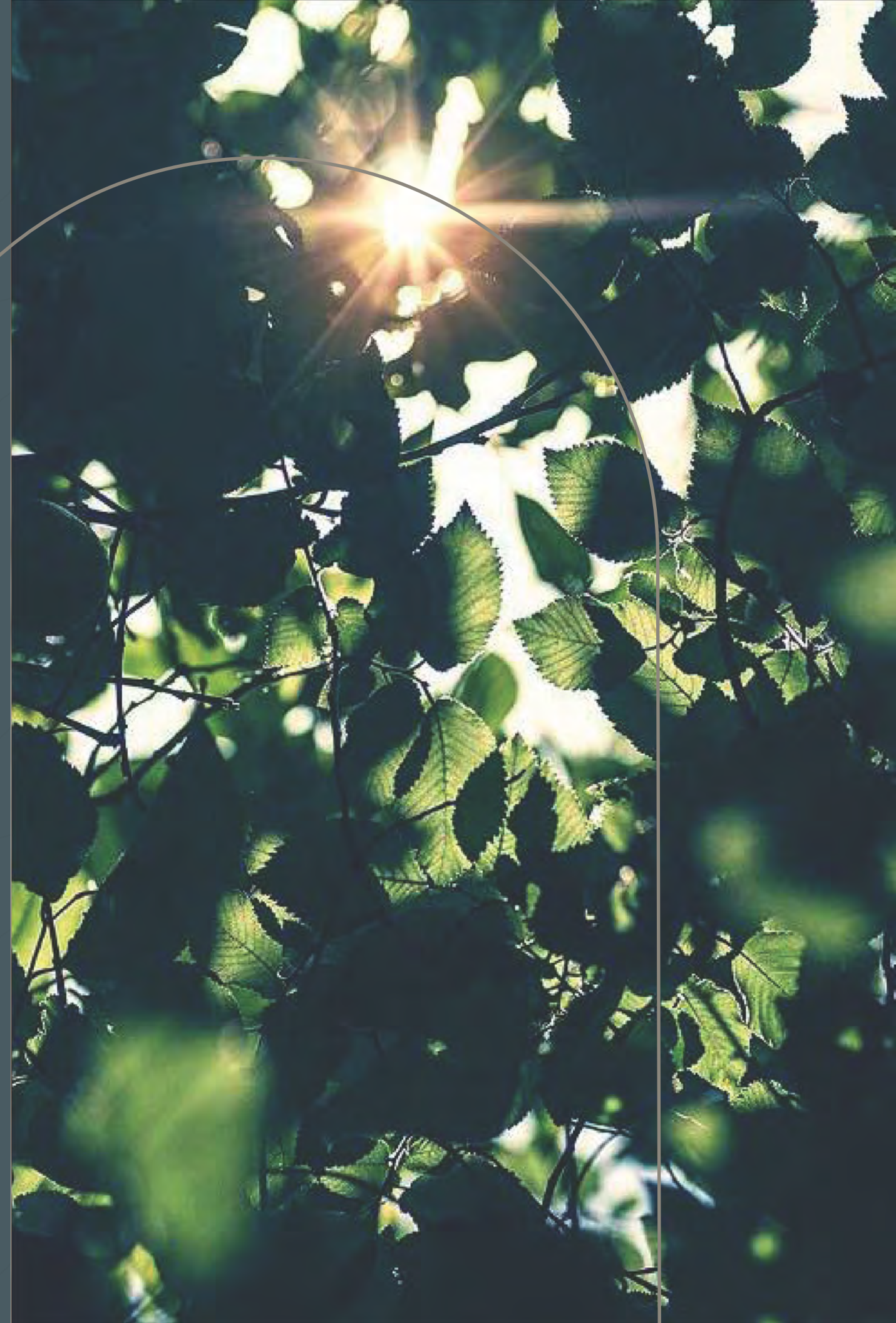
GATHERING SPACE

Station House is anchored by an event lawn at the eastern edge built to accommodate community gatherings. The restaurants within the project open to a series of garden courtyards that line the trail side of building. These outdoor courtyards terminate in the greenhouse “hall” with communal dining and an outdoor beer garden.

The gardens of Station House create a natural setting that serves as an oasis within it’s urban downtown setting.

“When a man plants a tree,
he plants himself.”

- JOHN MUIR



garden rooms



vined covered arcade to connect "garden rooms" along trail



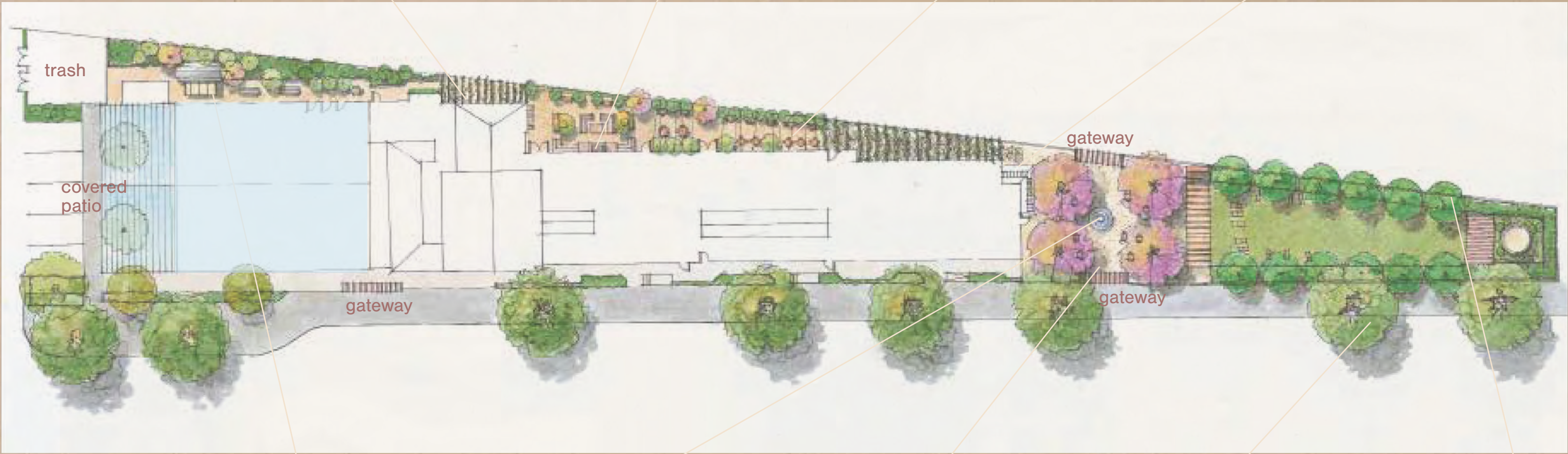
outdoor fireplace with built in seating



outdoor dining under lights



indoor outdoor bar wraps corner of restaurant



walk up airstream garden bar



circular fountain in center of entry plaza



wooden doors leading to garden



event lawn enclosed behind low wall and lined with shade trees



outdoor stage facing lawn built into corner water tower



SOCIAL SPACE

A LIVING ROOM FOR THE COMMUNITY

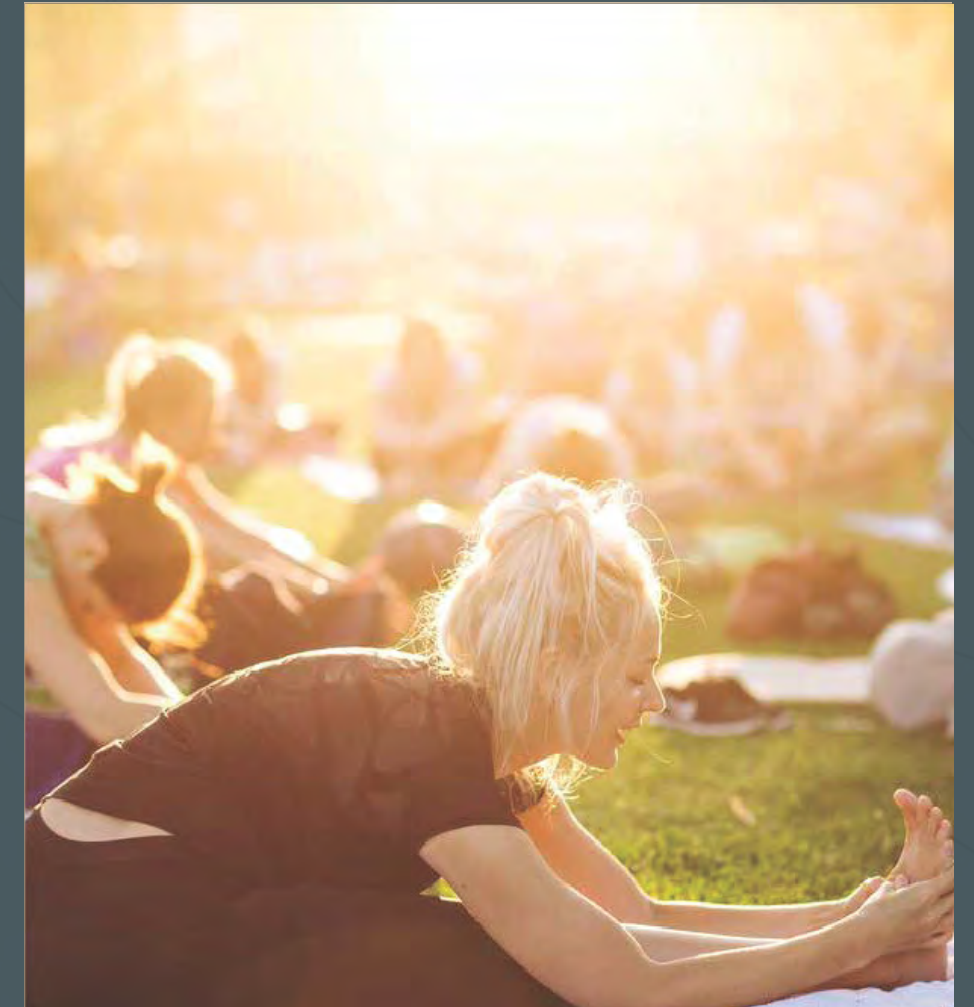
Station House invites the neighborhood to enjoy the grounds and participate in regularly programmed events, concerts, gatherings, outdoor markets, etc. This ongoing cultural calendar will feature something for all ages and backgrounds.

The gardens of the project are designed to accommodate an array of programs from larger neighborhood events (outdoor music) to more intimate activities (weekend yoga in the garden).



STATION HOUSE

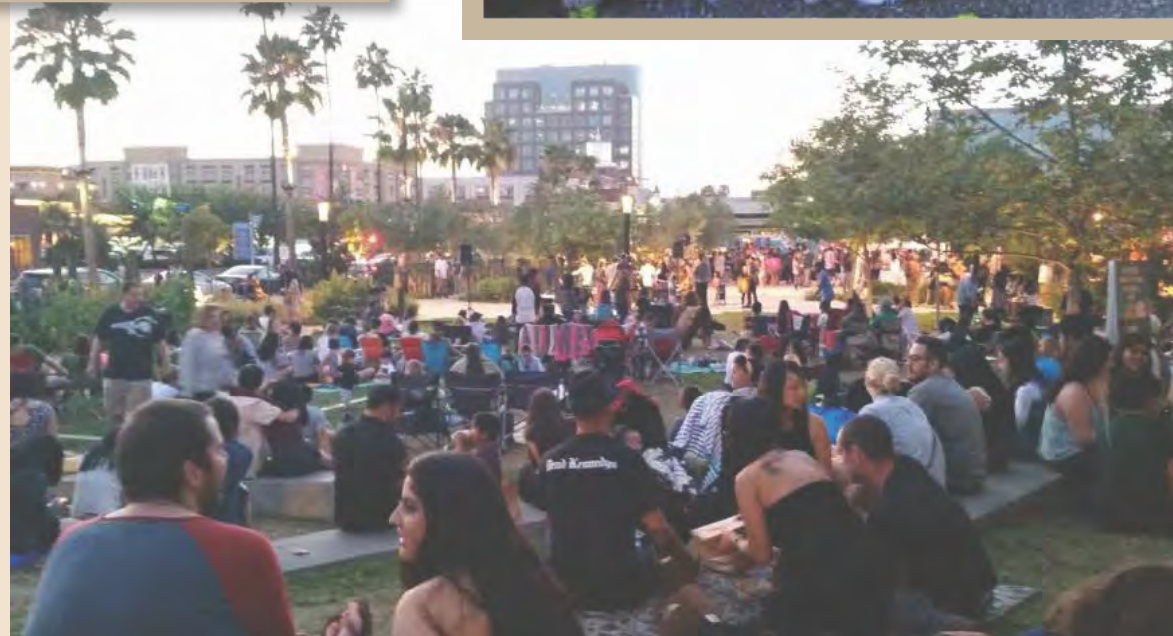
People make Place





Ongoing programs will establish Station House as a social hub and serve to introduce new people to the project.

These programs are an opportunity to support local artists and enhance the cultural offerings of Walnut Creek.



ATHRIVE

