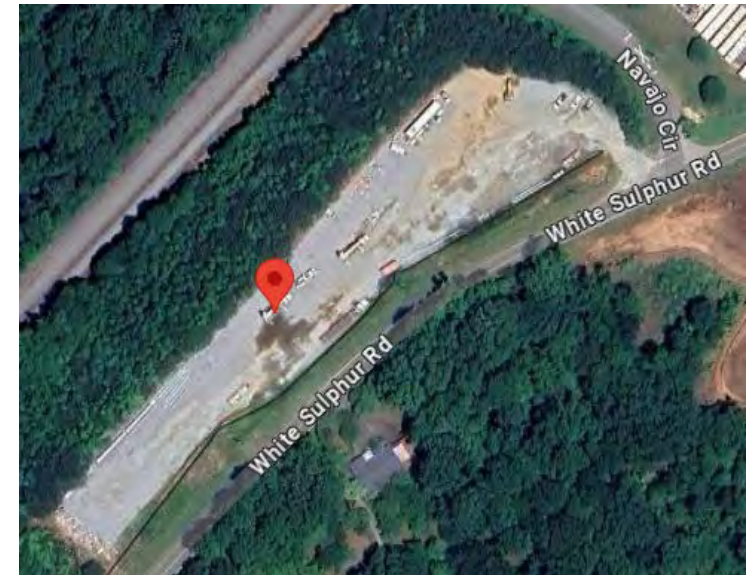


Heavy Industrial Yard For Lease

2695 White Sulphur Rd., Gainesville, Georgia

Property Features & Highlights

- Approximately 2 Usable Acres
- Excellent I-985 Access
- New Fencing and Privacy Screen
- New Gravel
- Approximately 1 Mile to New Inland Port



Will Middour
404-290-9713
WMIDDOUR@MIDDOURINVESTMENTS.COM

Allie Schonberg
404.242.1660
ASCHONBERG@MIDDOURINVESTMENTS.COM

Middour Investments, LLC
www.middourinvestments.com
3060 Peachtree Rd, Ste 1080 Atlanta, GA 30305