



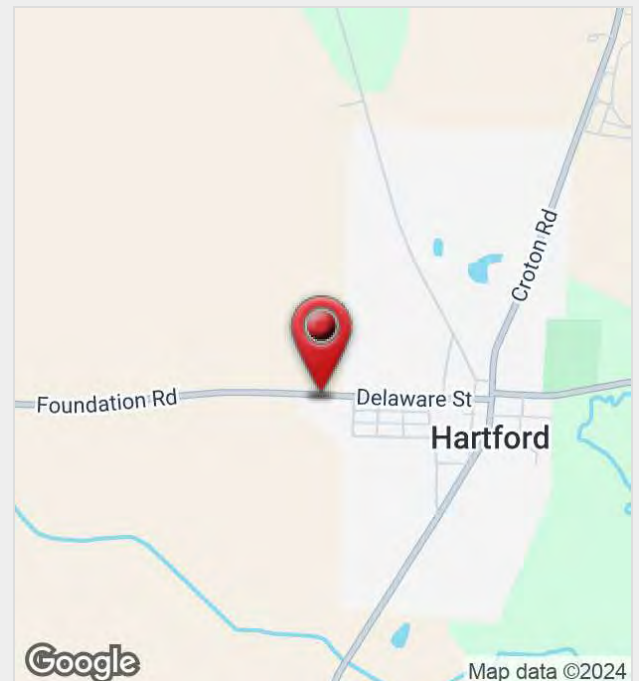
## 10843 Foundation Road

Hartford, Ohio 43013

### Property Features

- ±8,800 SF Athletic Training Facility
- Fully Renovated in 2021
- Space is Divided Between Weight Training Facility and Turf/Netting for Baseball Training
- Turnkey for a Similar User
- One (1) Drive-In Door (10' x 10')
- 18-Space Parking Lot in Rear
- Zoned Commercial in the Village of Hartford
- Great Opportunity in Growing Licking County
- Less Than 6 Miles to US-36
- 5 Miles to Centerburg, 6 Miles to Johnstown, and 10 Miles to Sunbury

**Sale Price: \$750,000**

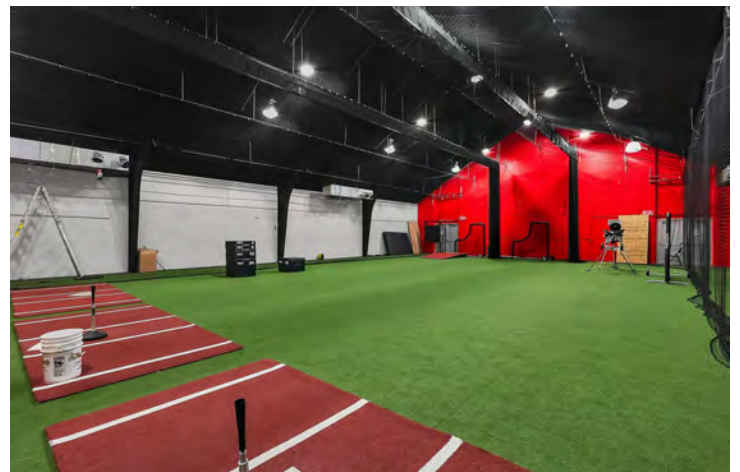
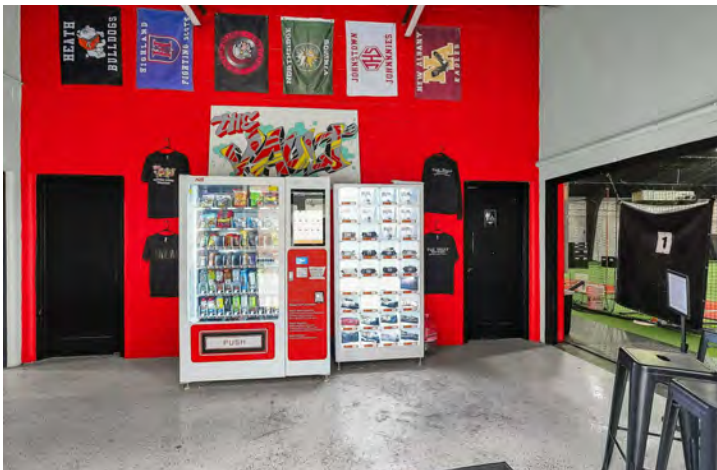


For more information:

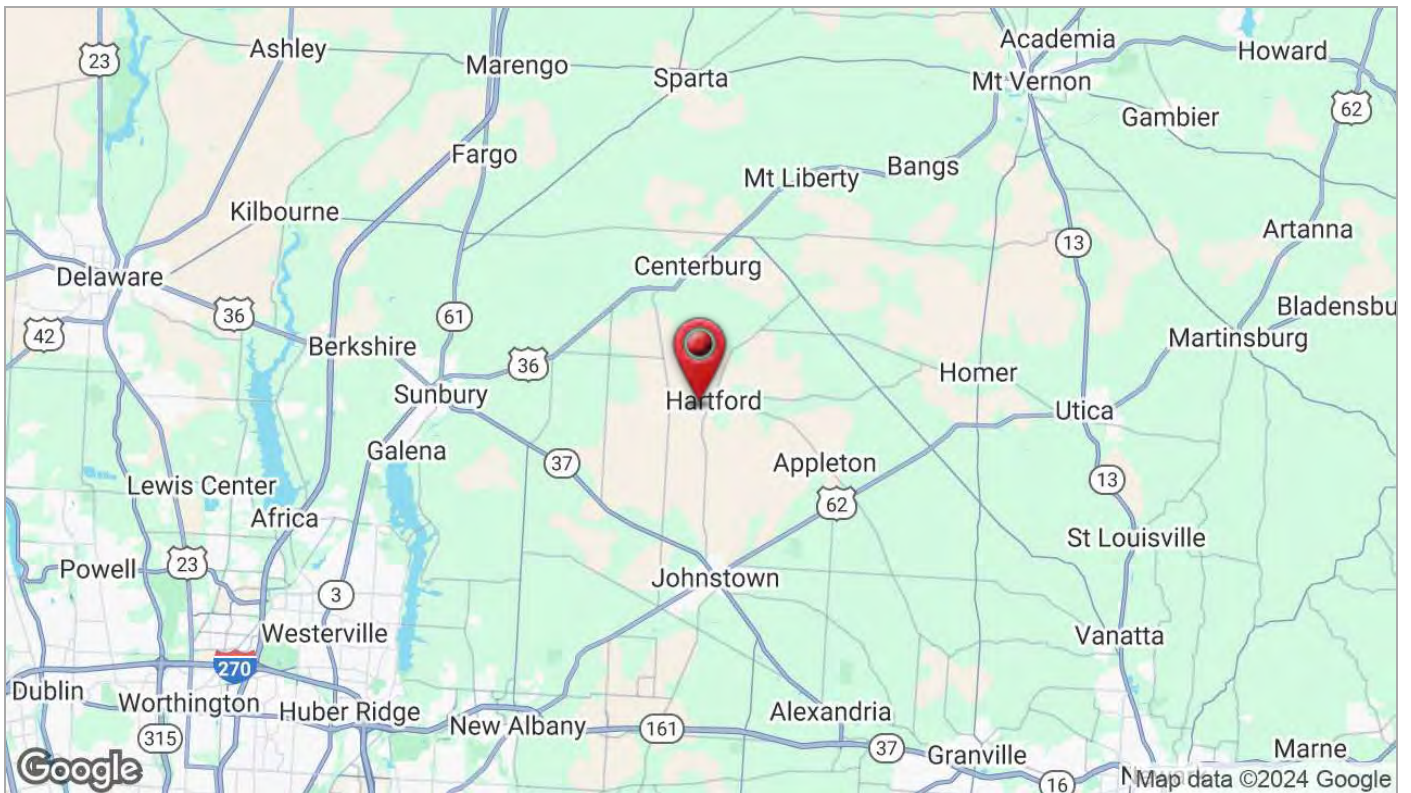
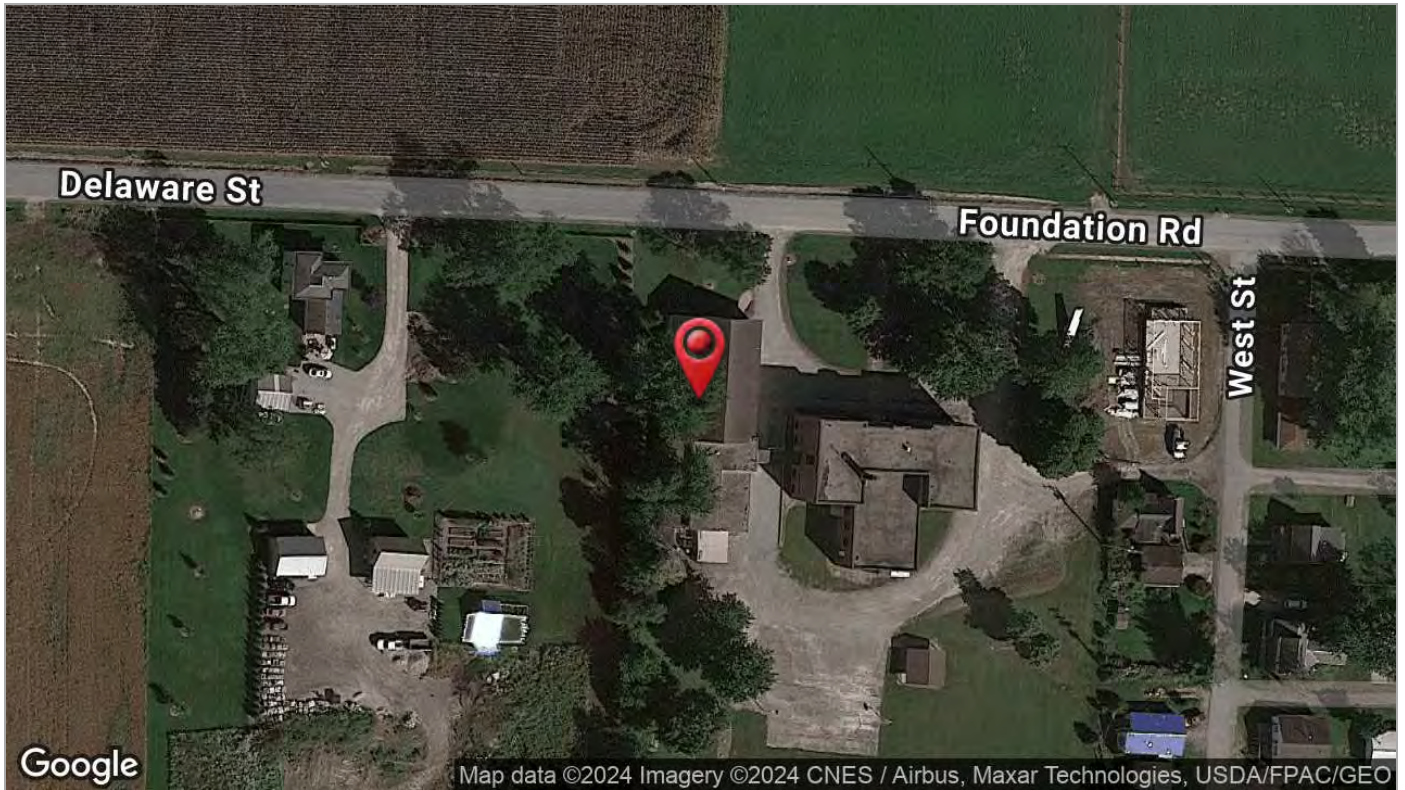
**Andrew Green**

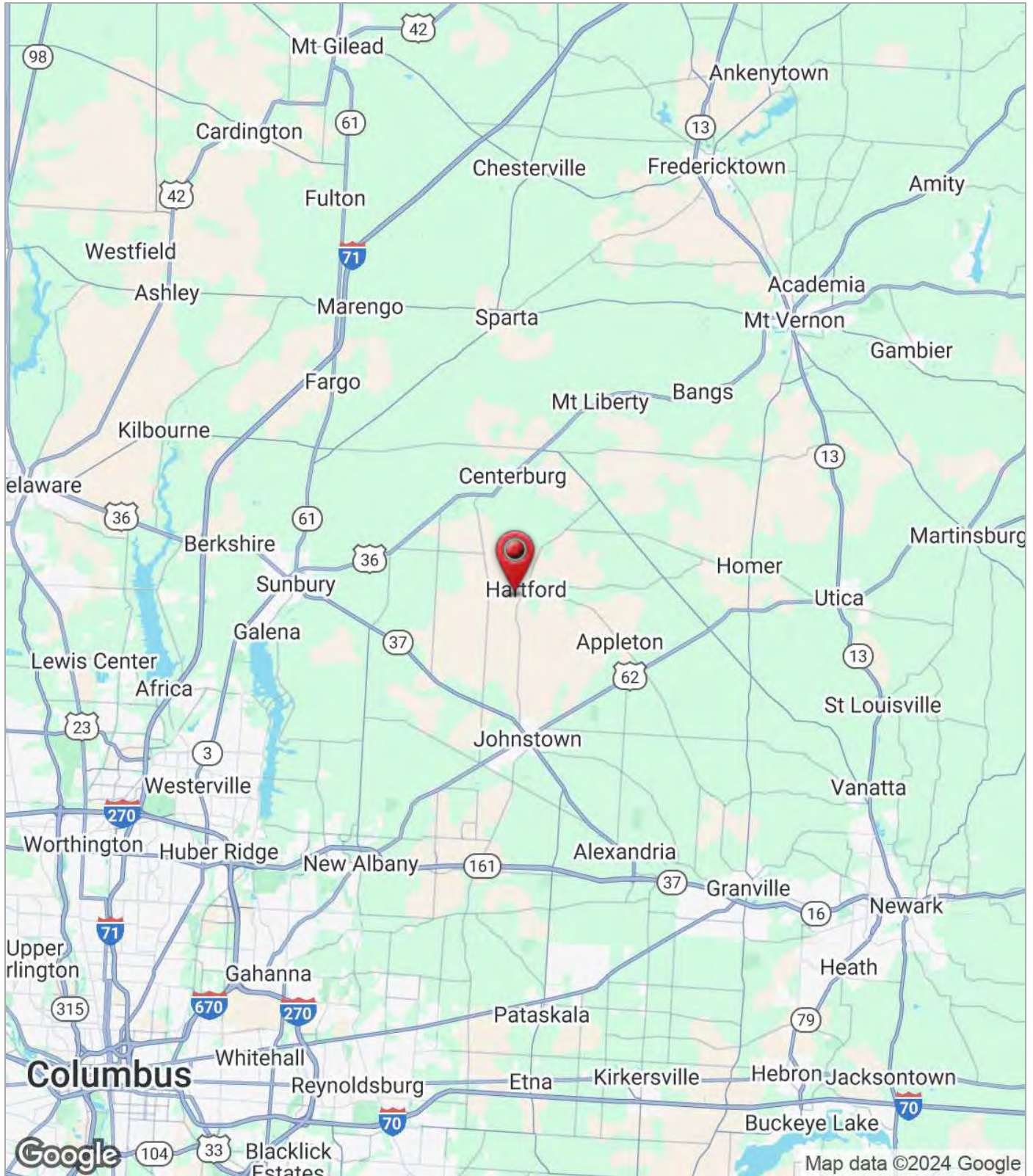
614 629 5232 • [agreen@ohioequities.com](mailto:agreen@ohioequities.com)

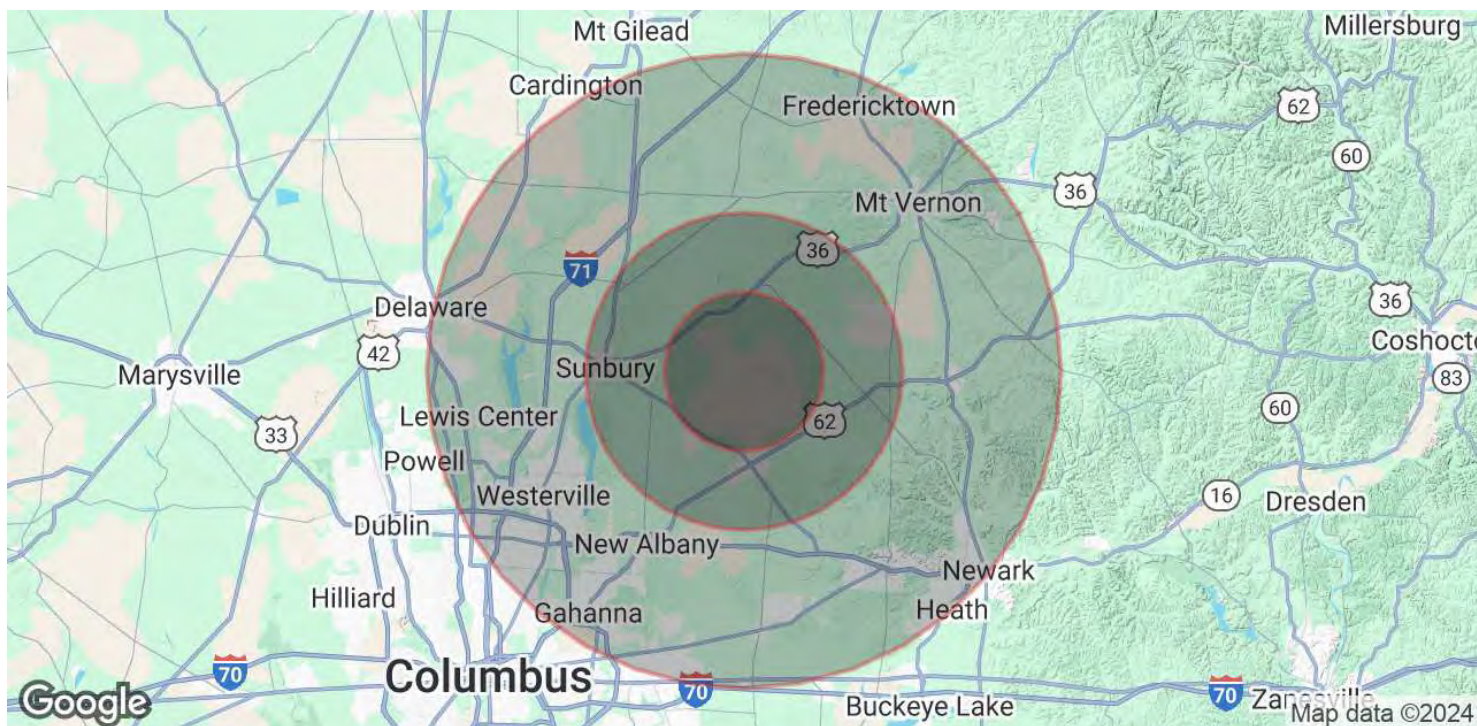












POPULATION	5 MILES	10 MILES	20 MILES
Total Population	7,517	40,214	651,762
Average Age	41	41	39
Average Age (Male)	40	40	38
Average Age (Female)	41	42	40
HOUSEHOLDS & INCOME	5 MILES	10 MILES	20 MILES
Total Households	2,748	14,935	251,548
# of Persons per HH	2.7	2.7	2.6
Average HH Income	\$126,575	\$124,532	\$122,760
Average House Value	\$372,960	\$405,881	\$358,276

Demographics data derived from AlphaMap