

For Sale

CBRE

1898 N Capitol Ave & 2644 Cropley Ave in San Jose

Redevelopment Opportunity

- + Corner location N Capitol and Cropley
- + Near Highway 680
- + Across from Cropley Light Rail Station
- + +/- .92 acres
- + CP Commercial Pedestrian Zoning (Buyer to verify)
- + Call broker for additional information



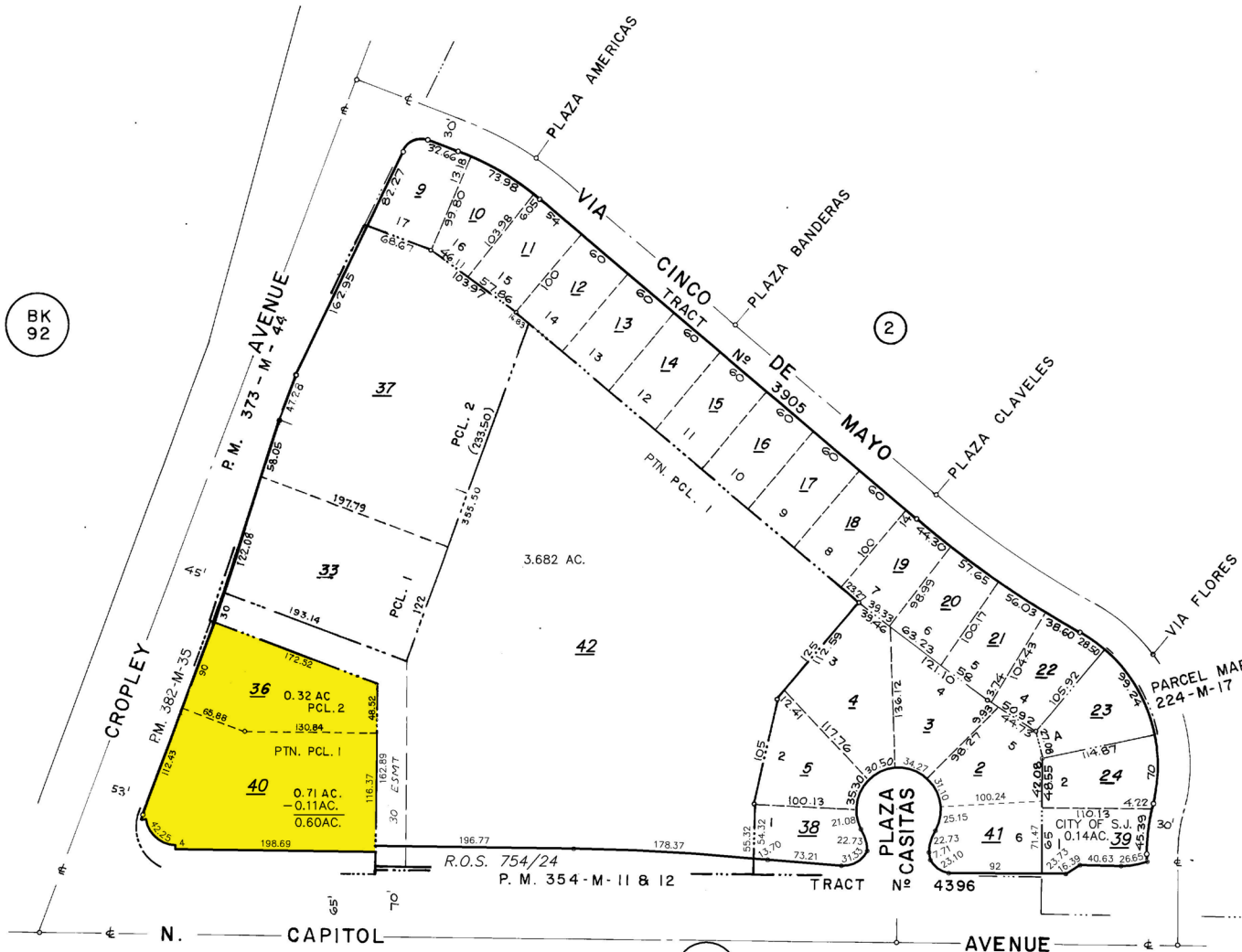
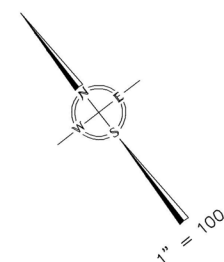
Contact Us

Donald Lonsinger
Senior Vice President
+1 408 453 7471
donald.lonsinger@cbre.com
Lic. 00895646

Assessor's map

OFFICE OF COUNTY ASSESSOR — SANTA CLARA COUNTY, CALIFORNIA

BOOK 589	PAGE 1
--------------------	------------------



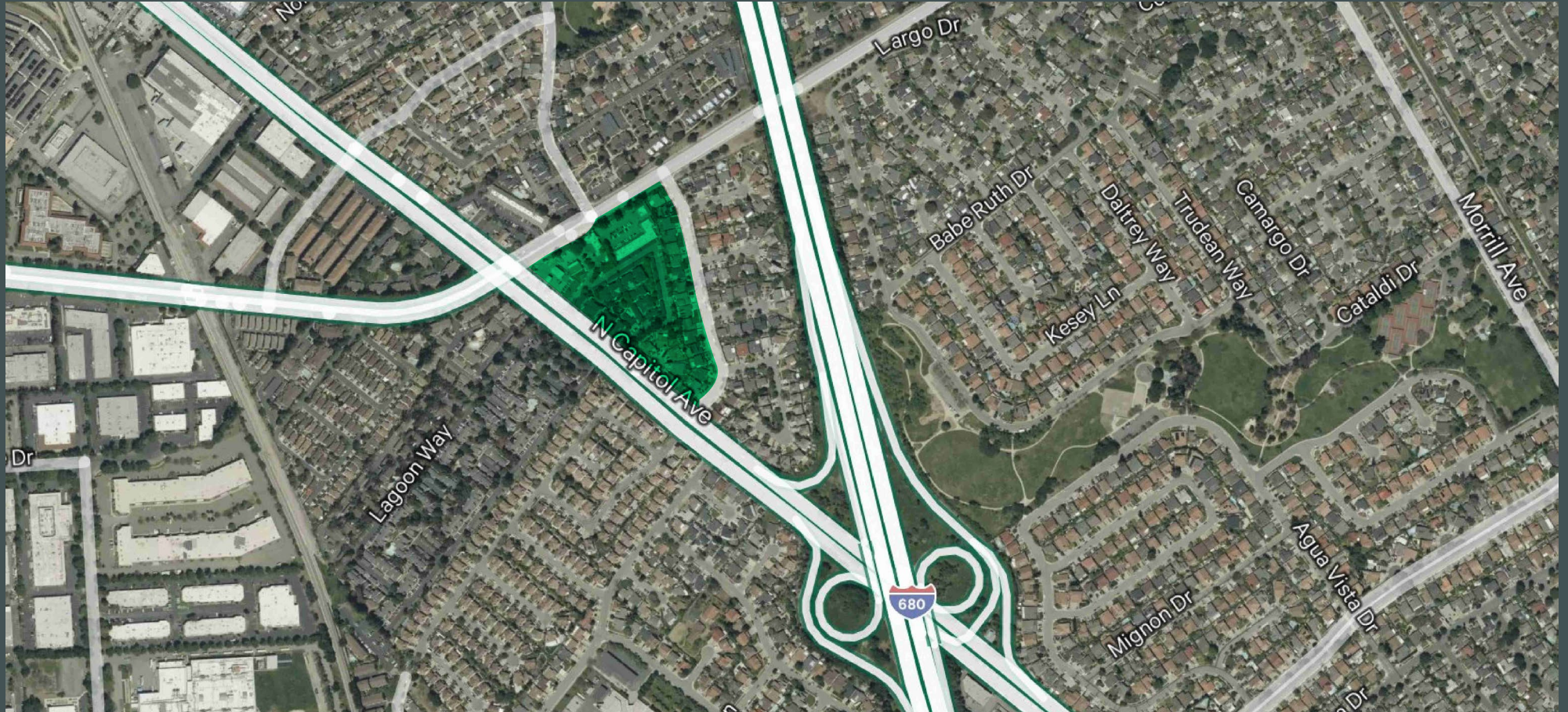
BOOK
244

LAWRENCE E. STONE — ASSESSOR
Cadastral map for assessment purposes only.
Compiled under R. & T. Code, Sec. 327.
Effective Roll Year 2004-2005

1898 N Capitol Ave. & 2644 Cropley Ave
in San Jose

For Sale

Location overview



© 2025 CBRE, Inc. All rights reserved. This information has been obtained from sources believed reliable, but has not been verified for accuracy or completeness. You should conduct a careful, independent investigation of the property and verify all information. Any reliance on this information is solely at your own risk. CBRE and the CBRE logo are service marks of CBRE, Inc. All other marks displayed on this document are the property of their respective owners, and the use of such logos does not imply any affiliation with or endorsement of CBRE. Photos herein are the property of their respective owners. Use of these images without the express written consent of the owner is prohibited. BSO 9-25