



300 Jubilee Drive

PEABODY, MA



Size: +/- 6,000 SF



Term: Through 1/31/2026



Available: Immediately

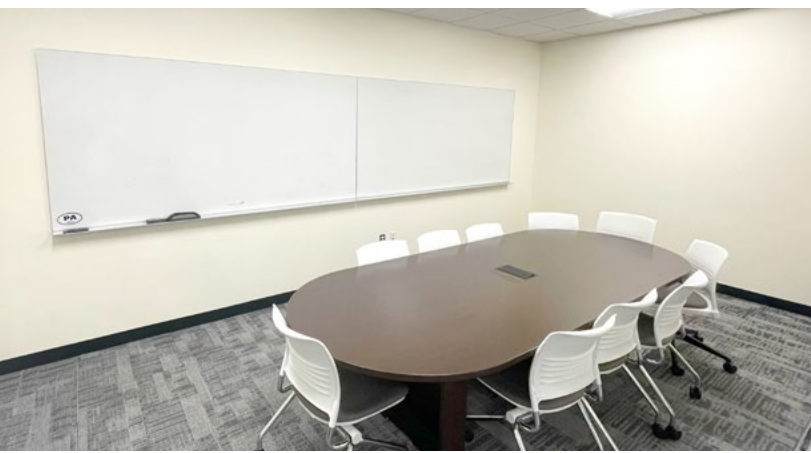
Rare, small opportunity in Class A building



AVISON
YOUNG



Centralized North Shore presence in Centennial Park

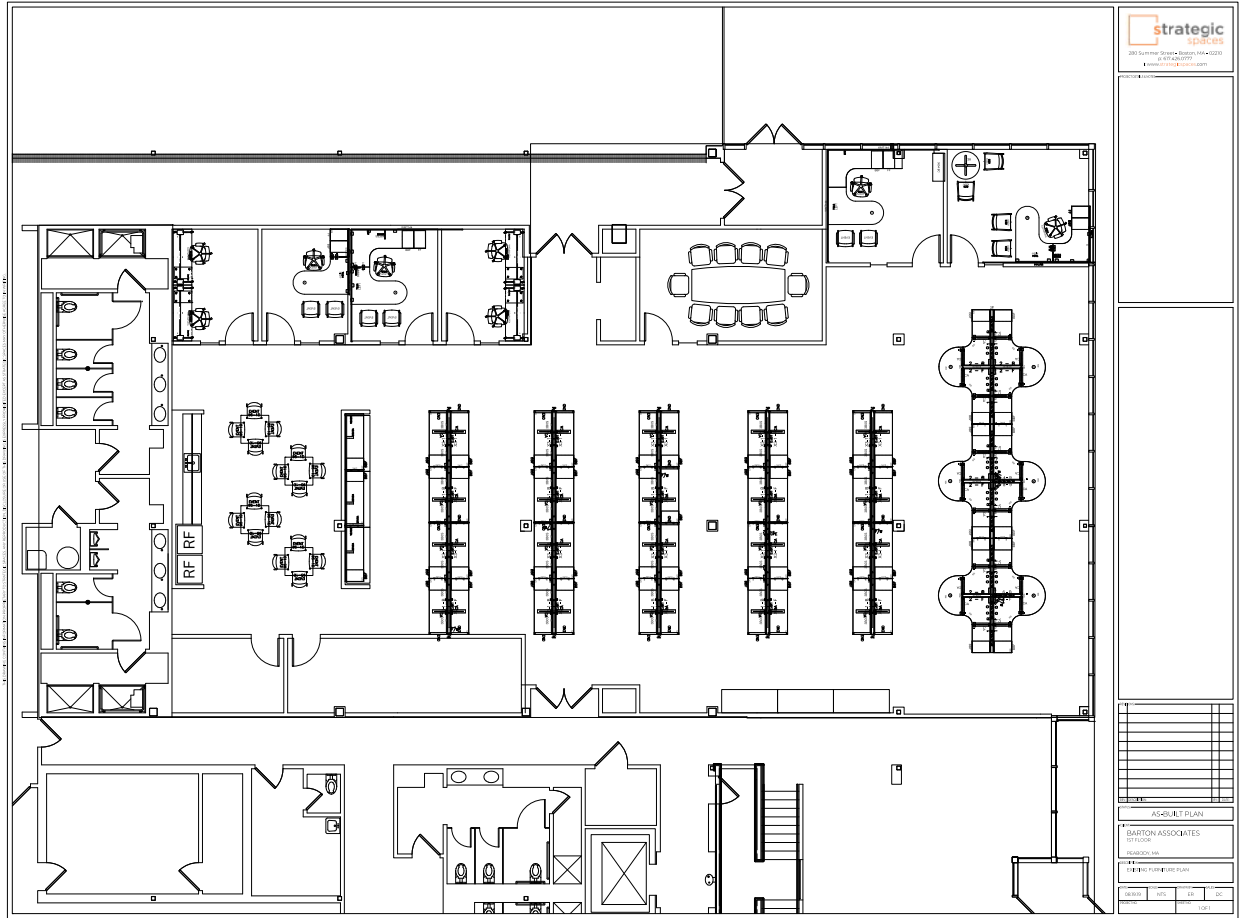


BUILDING SPECIFICATIONS

- 163,800 SF office/warehouse building
- +/- 6,000 SF available
- Six (6) private offices
- One (1) ten-person conference room
- 52 workstations
- Kitchenette
- Open office layout
- First floor private entrance
- 350 surface parking spaces
- 20 minutes North of Logan International Airport and next to the North Shore shopping centers
- Located off Route 128 and within a quarter mile from Route 1 and the I-95/ Route 128 split



FIRST FLOOR +/- 6,000 SF





For more information, please contact:

Jon Pezzoni, Sr Vice President
508.439.2437
jon.pezzoni@avisonyoung.com

Michael Dalton, Principal
617.838.0022
michael.dalton@avisonyoung.com

Jay Carnevale, Associate
617.548.0129
jay.carnevale@avisonyoung.com

**AVISON
YOUNG**