

FOR LEASE | HIGH EXPOSURE  
**877 HAMILTON ST**



## GET IN TOUCH

Emily Aeng  
Property Negotiator  
T: 604.873.7990  
E: [emily.aeng@vancouver.ca](mailto:emily.aeng@vancouver.ca)

# FOR LEASE | HIGH EXPOSURE 877 HAMILTON ST



## UNIT FEATURES

- Entire 2nd floor for lease
- Frontage along Hamilton Street
- Ample natural light
- Washrooms within unit
- Available anytime

## AVAILABLE SPACE

Unit 4,900 SF

## RENTAL RATE

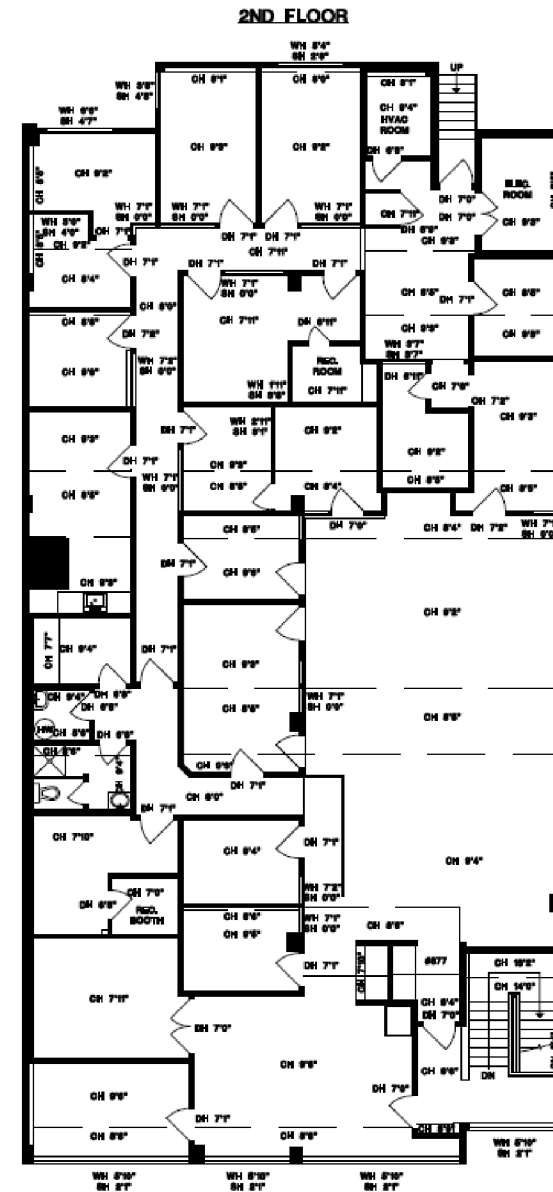
Gross rent \$45.00 PSF

Rent inclusive of realty taxes, routine maintenance and utilities.

Tenant responsible for own outgoings

## ZONING

DD



# FOR LEASE | HIGH EXPOSURE 877 HAMILTON ST



## LOCATION

This property is located in the Yaletown neighborhood, located along busy Hamilton Street between Smithe Street and Robson Street. The property is within minutes to downtown business district, Robson shopping district and historic Chinatown. Nearby amenities include restaurants, banks, coffee shops and shopping.

The unit is part of a two storey walk up commercial building. There are two units on ground floor and the unit for lease is the entire second floor.

Major transit routes include 5 minute walk to Canada Line, Cambie Street Bridge and Canada line. Bike routes along Smithe Street, Nelson Street and Beatty Street.



E. & O. E. The information contained herein was obtained from sources deemed reliable, and while thought to be correct, it is not guaranteed by the City of Vancouver and is subject to change without notice. All information should be carefully verified. All measurements quoted herein are approximate.