



11525 Village Crossing Dr

Jacksonville, Florida 32256

Property Highlights

- Currently under development, mixed-use medical/office
- Easily accessible from I-95, I-295, JTB, Butler/Baymeadows/Deerwood submarkets
- Rapidly expanding area with several retail buildings under construction/permitting phases
- Close proximity to new 10+/- AC development planned by Baptist Hospital

Property Overview

Pre-leasing new construction mixed-use medical office in Southside Quarter on Gate Parkway.

Offering Summary

Lease Rate:	Negotiable
Building Size:	36,000 SF
Available SF:	1,571 - 36,000 SF
Year Built:	2024
Delivery Date:	Spring 2025
Lot Size:	3.15 Acres

For More Information



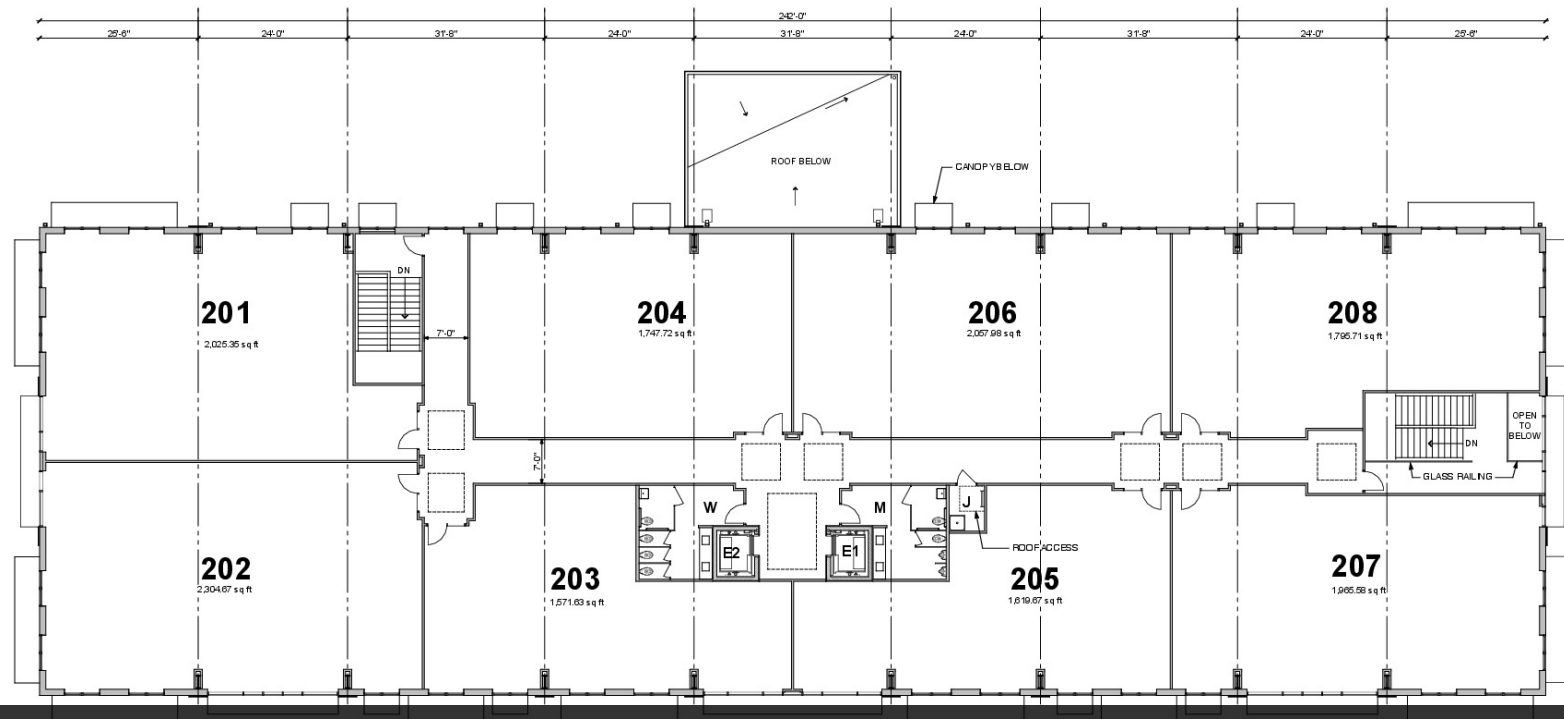
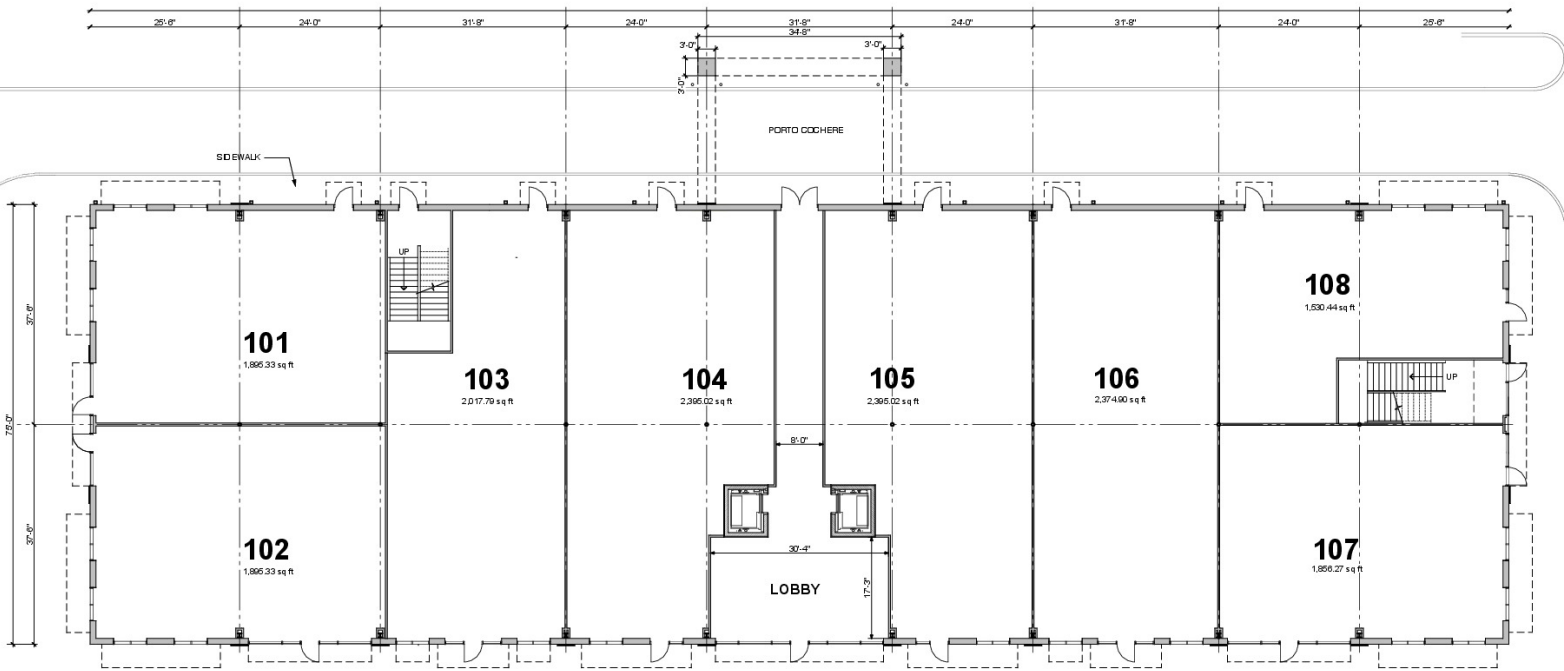
Sarah Teagle

Vice President, Office Specialist
O: 904 736 4516
st@naihallmark.com



Patrick Carney

Vice President, Office Specialist
O: 904 404 4456 | C: 904 588 2508
pc@naihallmark.com





NO WARRANTY OR REPRESENTATION, EXPRESS OR IMPLIED, IS MADE AS TO THE ACCURACY OF THE INFORMATION CONTAINED HEREIN, AND THE SAME IS SUBMITTED SUBJECT TO ERRORS, OMISSIONS, CHANGE OF PRICE, RENTAL OR OTHER CONDITIONS, PRIOR SALE, LEASE OR FINANCING, OR WITHDRAWAL WITHOUT NOTICE, AND OF ANY SPECIAL LISTING CONDITIONS IMPOSED BY OUR PRINCIPALS NO WARRANTIES OR REPRESENTATIONS ARE MADE AS TO THE CONDITION OF THE PROPERTY OR ANY HAZARDS CONTAINED THEREIN ARE ANY TO BE IMPLIED.

200 Riverside Avenue, Suite 5
Jacksonville, FL 32202
904 363 9002 tel
naihallmark.com



NO WARRANTY OR REPRESENTATION, EXPRESS OR IMPLIED, IS MADE AS TO THE ACCURACY OF THE INFORMATION CONTAINED HEREIN, AND THE SAME IS SUBMITTED SUBJECT TO ERRORS, OMISSIONS, CHANGE OF PRICE, RENTAL OR OTHER CONDITIONS, PRIOR SALE, LEASE OR FINANCING, OR WITHDRAWAL WITHOUT NOTICE, AND OF ANY SPECIAL LISTING CONDITIONS IMPOSED BY OUR PRINCIPALS NO WARRANTIES OR REPRESENTATIONS ARE MADE AS TO THE CONDITION OF THE PROPERTY OR ANY HAZARDS CONTAINED THEREIN ARE ANY TO BE IMPLIED.

200 Riverside Avenue, Suite 5
Jacksonville, FL 32202
904 363 9002 tel
naihallmark.com



South Elevation



North Elevation



West Elevation



East Elevation

NO WARRANTY OR REPRESENTATION, EXPRESS OR IMPLIED, IS MADE AS TO THE ACCURACY OF THE INFORMATION CONTAINED HEREIN, AND THE SAME IS SUBMITTED SUBJECT TO ERRORS, OMISSIONS, CHANGE OF PRICE, RENTAL OR OTHER CONDITIONS, PRIOR SALE, LEASE OR FINANCING, OR WITHDRAWAL WITHOUT NOTICE, AND OF ANY SPECIAL LISTING CONDITIONS IMPOSED BY OUR PRINCIPALS NO WARRANTIES OR REPRESENTATIONS ARE MADE AS TO THE CONDITION OF THE PROPERTY OR ANY HAZARDS CONTAINED THEREIN ARE ANY TO BE IMPLIED.

200 Riverside Avenue, Suite 5
Jacksonville, FL 32202
904 363 9002 tel
naihallmark.com



Tinseltown

CINEMARK

TERRA GAUCHA | TD Bank

Chick-fil-A | mellow MUSHROOM PIZZA BAKERY | Wendy's



St. Johns Town Center

DSW | LOFT | COACH

NORDSTROM | lululemon | BEST BUY | DICK'S SPORTS AND SHIRT STORES

AC HOTELS MARRIOTT | HYATT PLACE | HOMewood SUITES BY HILTON | tru | ROOMS TO GO

ZAXBY'S | COSTCO WHOLESALE | SPANNA'S | THE CAPITAL GOLF CLUB

Cheddar's SCRATCH & MIXED | BJ's RESTAURANT BREWHOUSE | The Cheesecake Factory | Poshama Island Grill

CHIPOTLE MEXICAN GRILL | BURGERFi | P.F. CHANG'S

