

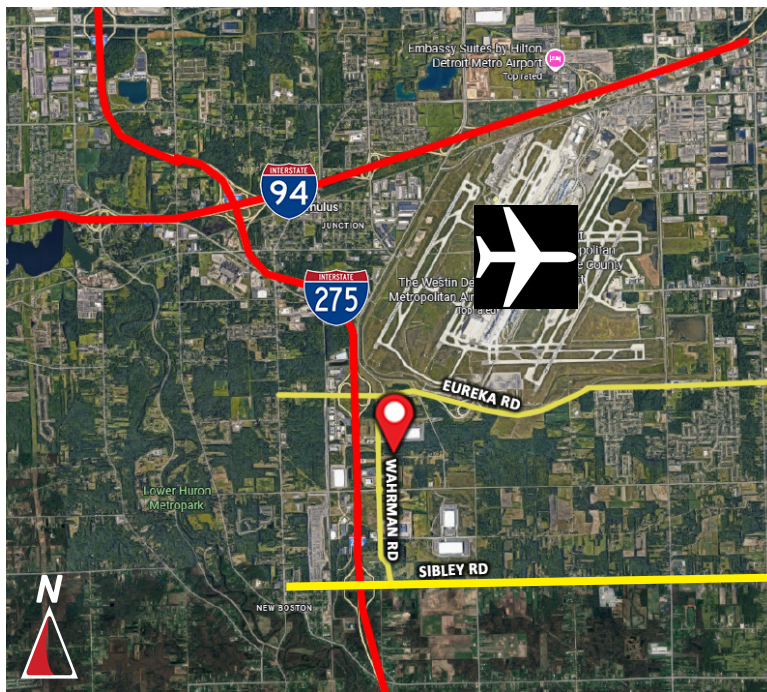
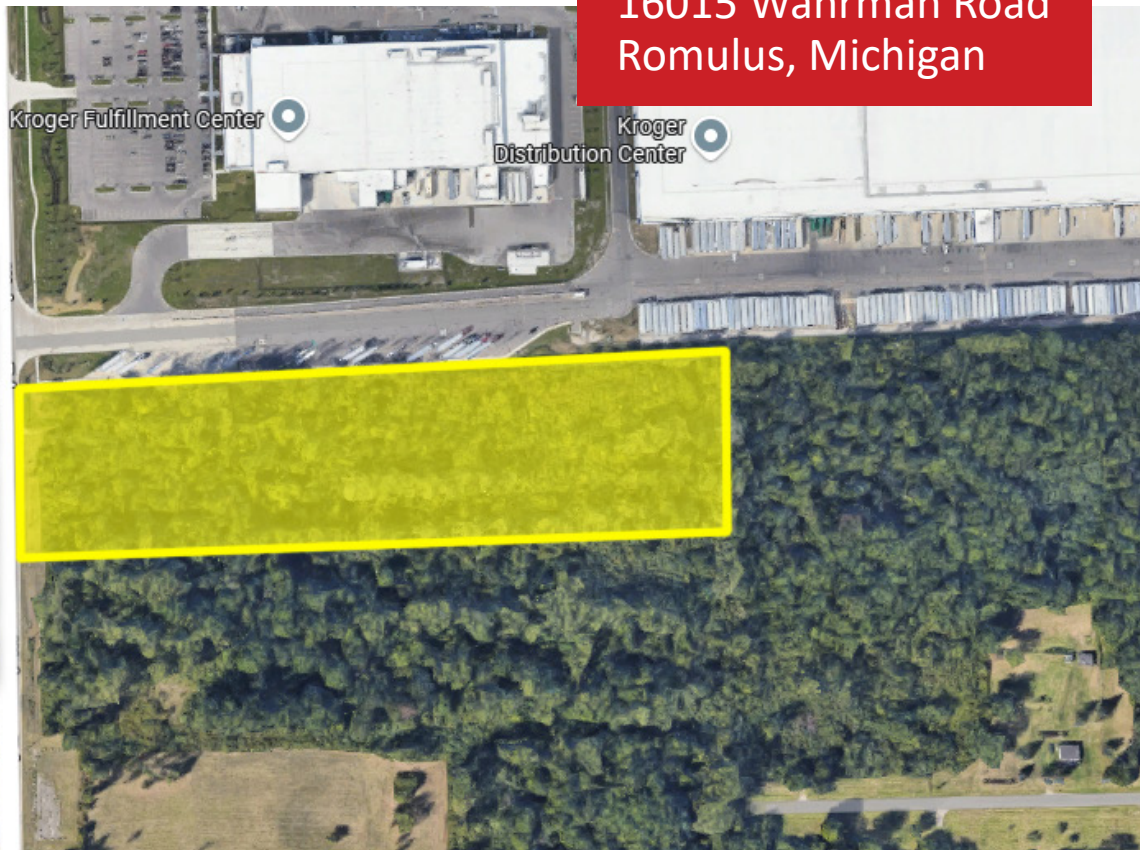
Burger

& COMPANY

FOR SALE

9.41 Acres

16015 Wahrman Road
Romulus, Michigan



- Prime development opportunity for sale
- Quick access to I-275 and I-94
- All Utilities are available
- Zoned M-2 Heavy Industrial
- Land Contract Available
- Located directly next to the Kroger Distribution Center
- Sale Price \$800,000.00

Burger & Company

248.536.2888

www.burgercollc.com

38345 W. 10 Mile Road, Suite 100
Farmington Hills, MI 48335

Paul Burger, SIOR

President

Cell: 586.202.7800

paul@burgercollc.com

Information contained herein is deemed to be reliable but is not guaranteed and may be withdrawn at any time.

FOR SALE

9.41 Acres

16015 Wahrman Road
Romulus, Michigan

LAND SPECIFICATIONS



Location	South of Eureka Road	Zoning	Heavy Industrial (M-2)
Parcel	80-131-99-0001-000	Lot Size	9.41 Acres
County	Wayne		

Electrical	DTE/Available	Sewer	Available
Gas	DTE/Available	Neighbors	DTW, Kroger Distribution
Water	Available	Easements	
Frontage	347' on Wahrman	Taxes	\$6,213.06 (2024)

Description

- Prime development opportunity for sale
- Quick access to I-275 and I-94
- All Utilities are available
- Zoned M-2 Heavy Industrial
- Land Contract Available
- Located directly next to the Kroger Distribution Center
- Sale Price \$800,000.00

Sale Price

\$800,000.00

Terms

CASH OR TERMS

ACCEPTABLE TO SELLER

Burger

& COMPANY

Paul Burger, SIOR
President
Cell: 586.202.7800
paul@burgercollc.com

248.536.2888
www.burgercollc.com
38345 W. 10 Mile Road, Suite 100
Farmington Hills, MI 48335

Information contained herein is deemed to be reliable but is not guaranteed and may be withdrawn at any time.

PLAT MAP

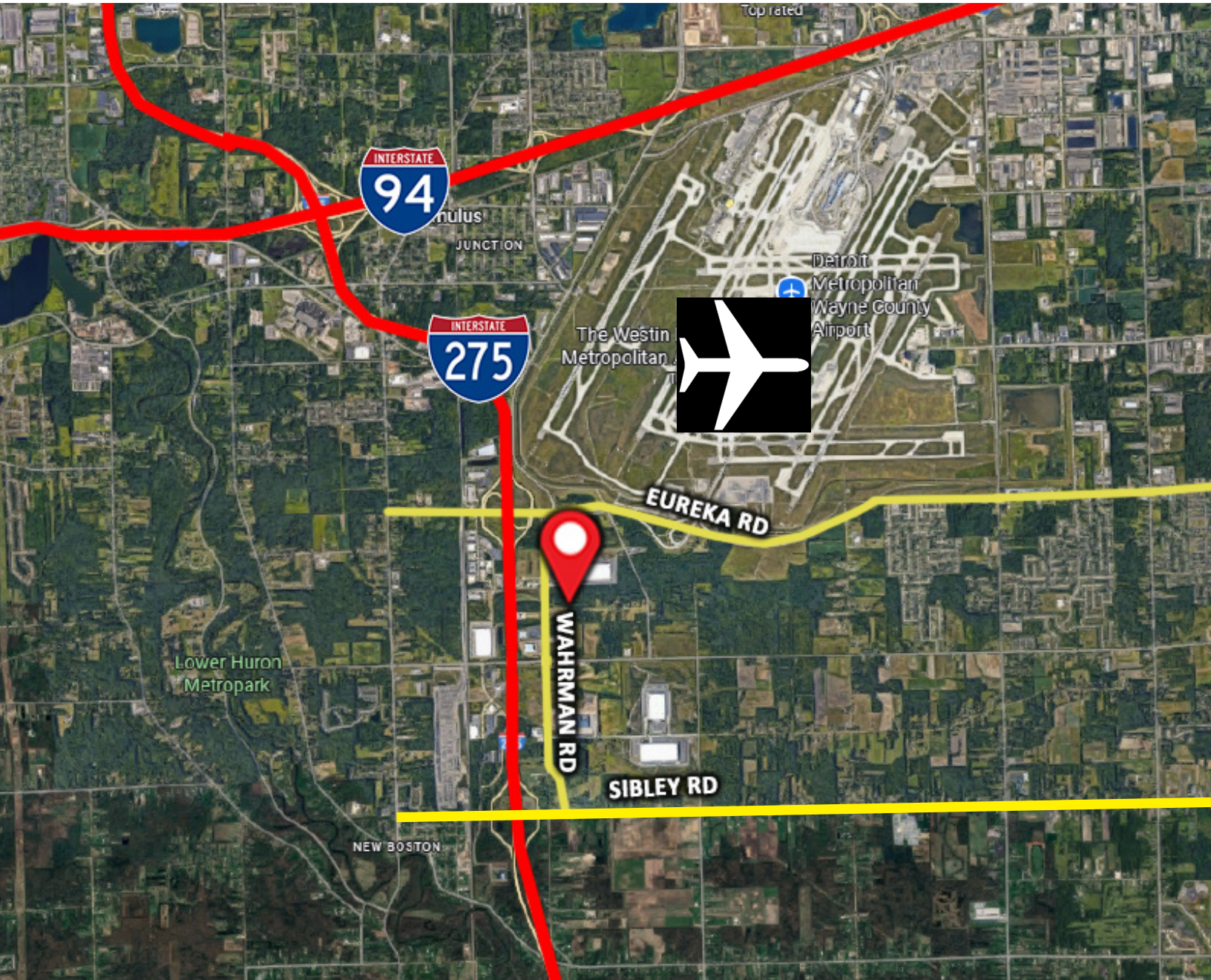
Information contained herein is deemed to be reliable but is not guaranteed and may be withdrawn at any time.

FOR SALE

9.41 Acres

16015 Wahrman Road
Romulus, Michigan

AERIAL MAP



Burger

& COMPANY

Paul Burger, SIOR
President
Cell: 586.202.7800
paul@burgercollc.com

248.536.2888
www.burgercollc.com
38345 W. 10 Mile Road, Suite 100
Farmington Hills, MI 48335

Information contained herein is deemed to be reliable but is not guaranteed and may be withdrawn at any time.