



FOR LEASE
1825 Blvd of the Allies



FLEX SPACE

- Flexible open layout
- Immediate availability
- On-site parking included
- Functional loading dock



RE/MAX SELECT REALTY

TYLER PETIT
Senior Advisor
(724) 882-2619
tylerpetit@remax.net

5807 Penn Ave | Pittsburgh, PA 15206-3816

+17249336300 | <https://www.instagram.com/remaxselectrealty/> Equal Housing Opportunity Office Independently Owned and Operated.



Property Summary

Address1:	1825 Boulevard of the Allies
Address2:	Pittsburgh, PA 15219
APN:	0011-J-00277-0000-00
Building SF:	6,500
Dock Doors:	1
Lease Rate:	12/SF - NNN
Lot Size:	9,947 SF
Parking:	5
Zoning:	UPR-B

Property Overview

Versatile 6,500 SF flex building available immediately. This single-tenant property features open, configurable space suitable for warehouse, storage, light industrial, or creative use. The building is in good overall condition and can accommodate a variety of business needs with minimal updates. Includes one loading dock and on-site parking for up to five vehicles. Ideal for users seeking flexible space with straightforward access and functional layout. General commercial zoning allows for a range of uses.

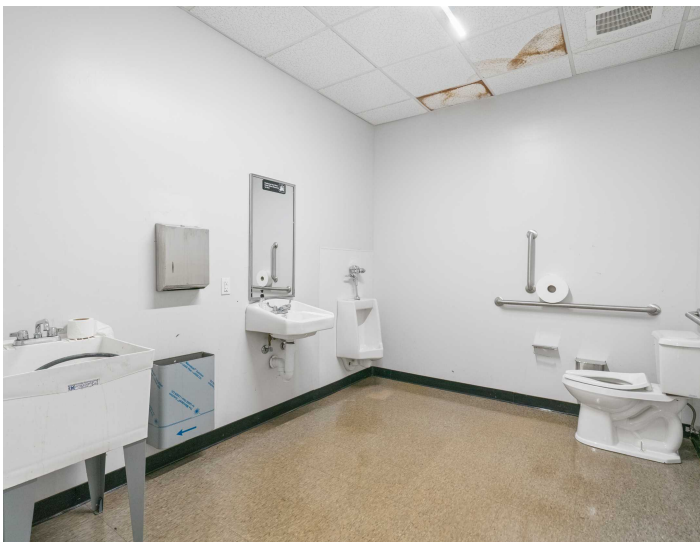
Location Overview

Situated on Boulevard of the Allies with direct access to I 376 and I 579, this centrally located warehouse offers excellent connectivity to Downtown Pittsburgh and the greater region. Ideal for logistics or distribution users, the property provides strong visibility, quick highway access, and close proximity to fuel stations, service providers, and public transit. Its urban location supports both efficient operations and workforce accessibility.

PROPERTY PHOTOS

1825 BLVD OF THE ALLIES

1825 Boulevard of the Allies
Pittsburgh, PA 15219



RE/MAX
COMMERCIAL®

The calculations and data presented are deemed to be accurate, but not guaranteed. They are intended for the purpose of illustrative projections and analysis. The information provided is not intended to replace or serve as substitute for any legal, accounting, investment, real estate, tax or other professional advice, consultation or service. Users should consult with a professional in the respective legal, accounting, tax or other professional.

LOCATION MAPS

1825 BLVD OF THE ALLIES

1825 Boulevard of the Allies
Pittsburgh, PA 15219



The calculations and data presented are deemed to be accurate, but not guaranteed. They are intended for the purpose of illustrative projections and analysis. The information provided is not intended to replace or serve as substitute for any legal, accounting, investment, real estate, tax or other professional advice, consultation or service. Users should consult with a professional in the respective legal, accounting, tax or other professional.

All materials and information received or derived from RE/MAX Select Realty its directors, officers, agents, advisors, affiliates and/or any third party sources are provided without representation or warranty as to completeness, veracity, or accuracy, condition of the property, compliance or lack of compliance with applicable governmental requirements, developability or suitability, financial performance of the property, projected financial performance of the property for any party's intended use or any and all other matters.

Neither RE/MAX Select Realty its directors, officers, agents, advisors, or affiliates makes any representation or warranty, express or implied, as to accuracy or completeness of the materials or information provided, derived, or received. Materials and information from any source, whether written or verbal, that may be furnished for review are not a substitute for a party's active own due diligence to determine these and other matters of significance to such party. RE/MAX Select Realty will not investigate or verify any such matters or conduct due diligence for a party unless otherwise agreed in writing.

EACH PARTY SHALL CONDUCT ITS OWN INDEPENDENT INVESTIGATION AND DUE DILIGENCE.

Any party contemplating or under contract or in escrow for a transaction is urged to verify all information and to conduct their own inspections and investigations including through appropriate third-party independent professionals selected by such party. All financial data should be verified by the party including by obtaining and reading applicable documents and reports and consulting appropriate independent professionals. RE/MAX Select Realty makes no warranties and/or representations regarding the veracity, completeness, or relevance of any financial data or assumptions. RE/MAX Select Realty does not serve as a financial advisor to any party regarding any proposed transaction.

All data and assumptions regarding financial performance, including that used for financial modeling purposes, may differ from actual data or performance. Any estimates of market rents and/or projected rents that may be provided to a party do not necessarily mean that rents can be established at or increased to that level. Parties must evaluate any applicable contractual and governmental limitations as well as market conditions, vacancy factors and other issues in order to determine rents from or for the property. Legal questions should be discussed by the party with an attorney. Tax questions should be discussed by the party with a certified public accountant or tax attorney. Title questions should be discussed by the party with a title officer or attorney. Questions regarding the condition of the property and whether the property complies with applicable governmental requirements should be discussed by the party with appropriate engineers, architects, contractors, other consultants, and governmental agencies.

RE/MAX SELECT REALTY

5807 Penn Ave
Pittsburgh, PA 15206-3816



Each Office Independently Owned and Operated

PRESENTED BY:

TYLER PETIT

Senior Advisor

O: (724) 882-2619

C: (724) 882-2619

tylerpetit@remax.net