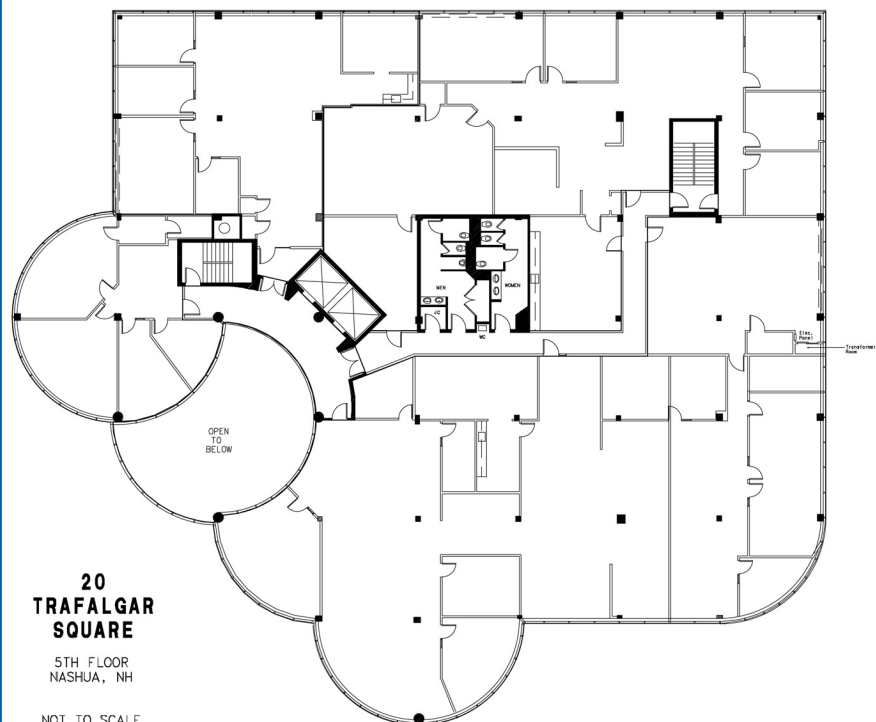


SPECIFICATIONS

BUILDING AREA	100,000 +/- divisible
ZONING	Commercial
YEAR BUILT	1989
WATER & SEWER	Public
ELECTRIC	1500 AMPS 277/480 3-Phase
GAS	Natural
HVAC	Delta with NEMA 12 control pannel; 555 ton cooling tower.
CONSTRUCTION	Steel frame, glass curtain wall; concrete floors.
PARKING	Ample
SPRINKLERS	Wet system throughout
LIGHTING	Parabolic
ELEVATORS	2 High Speed 3500#
FLOOR LOAD RATING	150# / SF Final
LOADING	2 Dock height doors
COLUMN SPACING	20 x20
ALARM	21 Zone local fire alarm
ADDITIONAL	24 hour maintenance Cafe' in lobby Irrigated grounds Tennis Courts Full Showers

THE GLASS TOWER

Conveniently located next to the Crowne Plaza Hotel, with fine dining, shopping, and health club facilities nearby.



20 Trafalgar Square, Ste. 100, Nashua, New Hampshire 03063
www.korsakrealty.com / 603-882-9700 / FAX 603-889-2030