

**FOR LEASE**

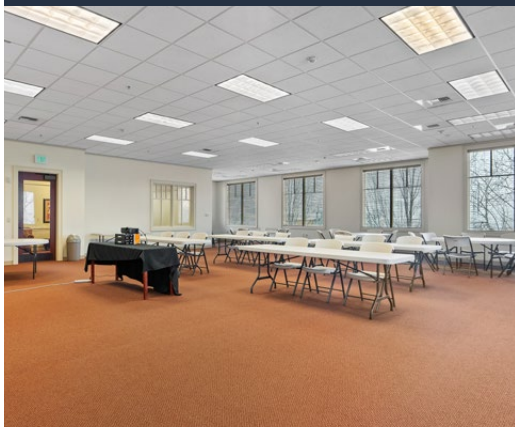
**3,790 - 5,685 SF**

**Downtown Class A Office Space**

735 SW 6th Street, Redmond, OR 97756



**BEAUTIFULLY MAINTAINED BUILDING WITH MODERN AMENITIES**



**Dan Kemp, CCIM | Emilio Tiscareno, Broker**

600 SW Columbia St., Ste. 6100 | Bend, OR 97702

**541.383.2444** | [www.CompassCommercial.com](http://www.CompassCommercial.com)

**COMPASS**  
COMMERCIAL

**REAL  
ESTATE  
SERVICES**



**FOR LEASE**

**\$1.75/SF/MO. NNN**

## Downtown Class A Office Space

### AVAILABLE SUITES

**Downstairs:** ~~3,790 SF | \$1.95/SF/Mo. NNN~~ **LEASED**

**Upstairs:** 3,790 SF | \$1.75/SF/Mo. NNN

**Basement:** 1,895 SF | \$0.25/SF/Mo. NNN

*Basement cannot be leased alone*

**NNNs:** TBD

**Parking:** Ample parking available

### HIGHLIGHTS

- Located in the heart of Downtown Redmond
- Close proximity to Hwy-97 and Redmond Airport
- Beautifully maintained building with modern amenities
- Large windows allowing abundant natural light
- Tenant has the option to lease the second floor and basement or just the second floor (basement cannot be leased on its own)
- Close proximity to local restaurants, shops, and services
- Located in a vibrant area with community events and activities
- Central Business District Commercial zoning



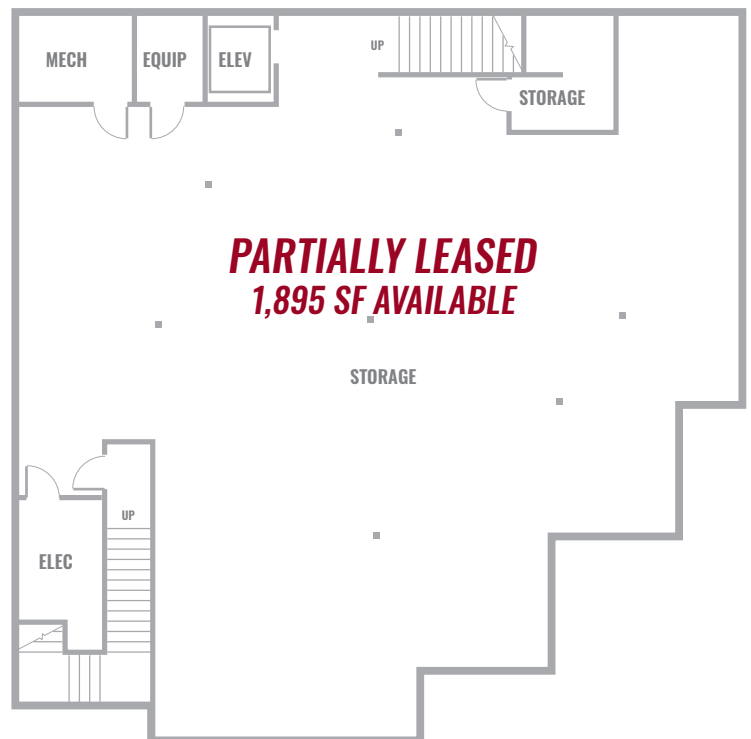
## UPPER FLOOR PLAN



## MAIN FLOOR PLAN



## BASEMENT FLOOR PLAN



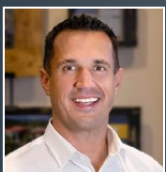


# FOR LEASE

735 SW 6th Street, Redmond, OR 97756



Brokers are licensed in the state of Oregon. This information has been furnished from sources we deem reliable, but for which we assume no liability. This is an exclusive listing. The information contained herein is given in confidence with the understanding that all negotiations pertaining to this property be handled through Compass Commercial Real Estate Services. All measurements are approximate.



**Dan Kemp, CCIM**  
Partner, Principal Broker  
Cell 541.550.8413  
dkemp@compasscommercial.com



**Emilio Tiscareno**  
Broker  
Cell 541.213.9640  
etiscareno@compasscommercial.com

**COMPASS**  
COMMERCIAL

**REAL ESTATE SERVICES**