



For Lease

204 3rd Avenue, Osceola, WI 54020



Professional Office Space

**1,000 -2,100 sf Office Available
Main Floor Office Space**

Approx 2,500 sf Lower Level

**Area: Downtown Osceola
Parking: Ample Off-Street Lot
Common Areas:**

Restrooms & Breakroom

Lease Rates:

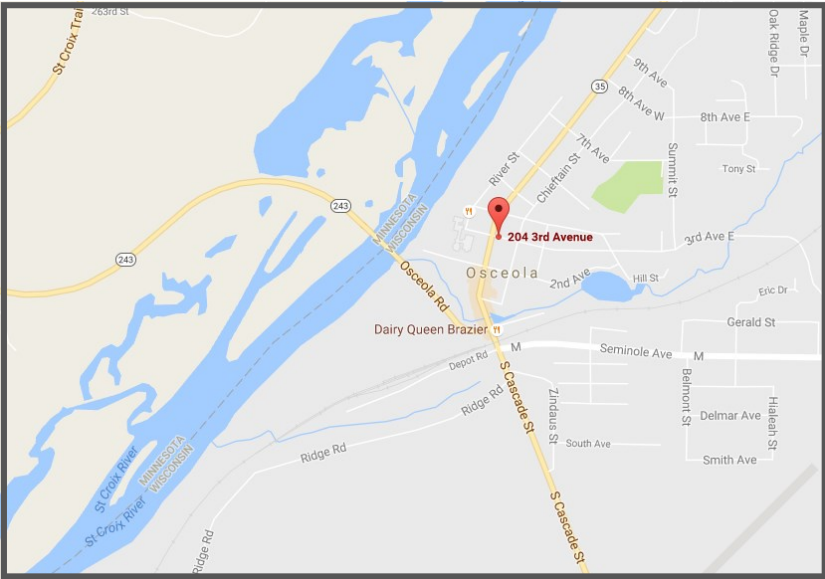
\$14.00 psf gross

For Information Contact:

Mike Muske

(651) 982-1219 Office

Mmuske@Remax.net



**RE/MAX
Synergy**

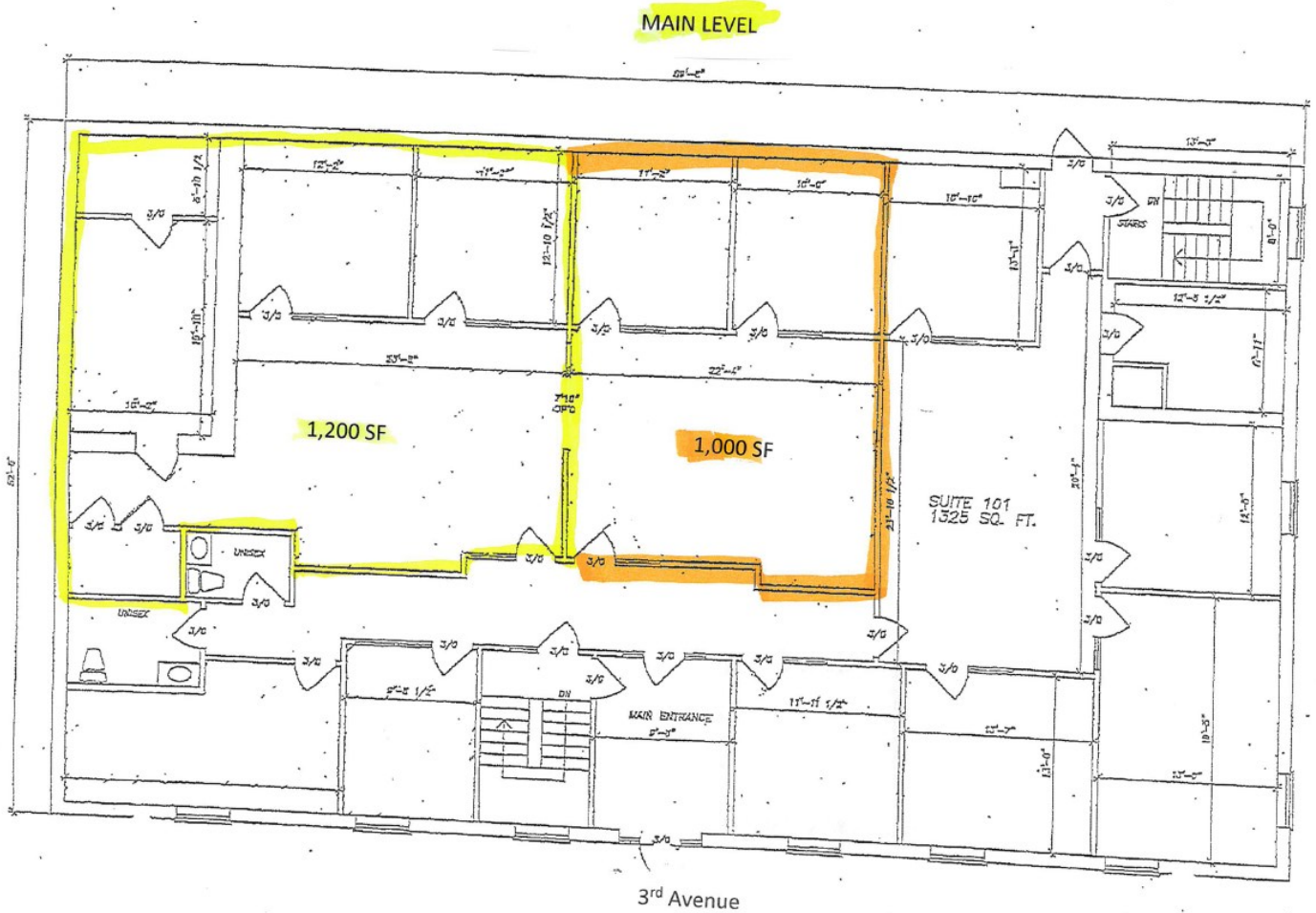
A Muske Company
920 W. Broadway, Forest Lake, MN 55025
651-464-7070
www.remasynergy.com

**RE/MAX
Synergy**



Floor Plan Main Level

204 3rd Avenue, Osceola, WI 54020



RE/MAX
Synergy

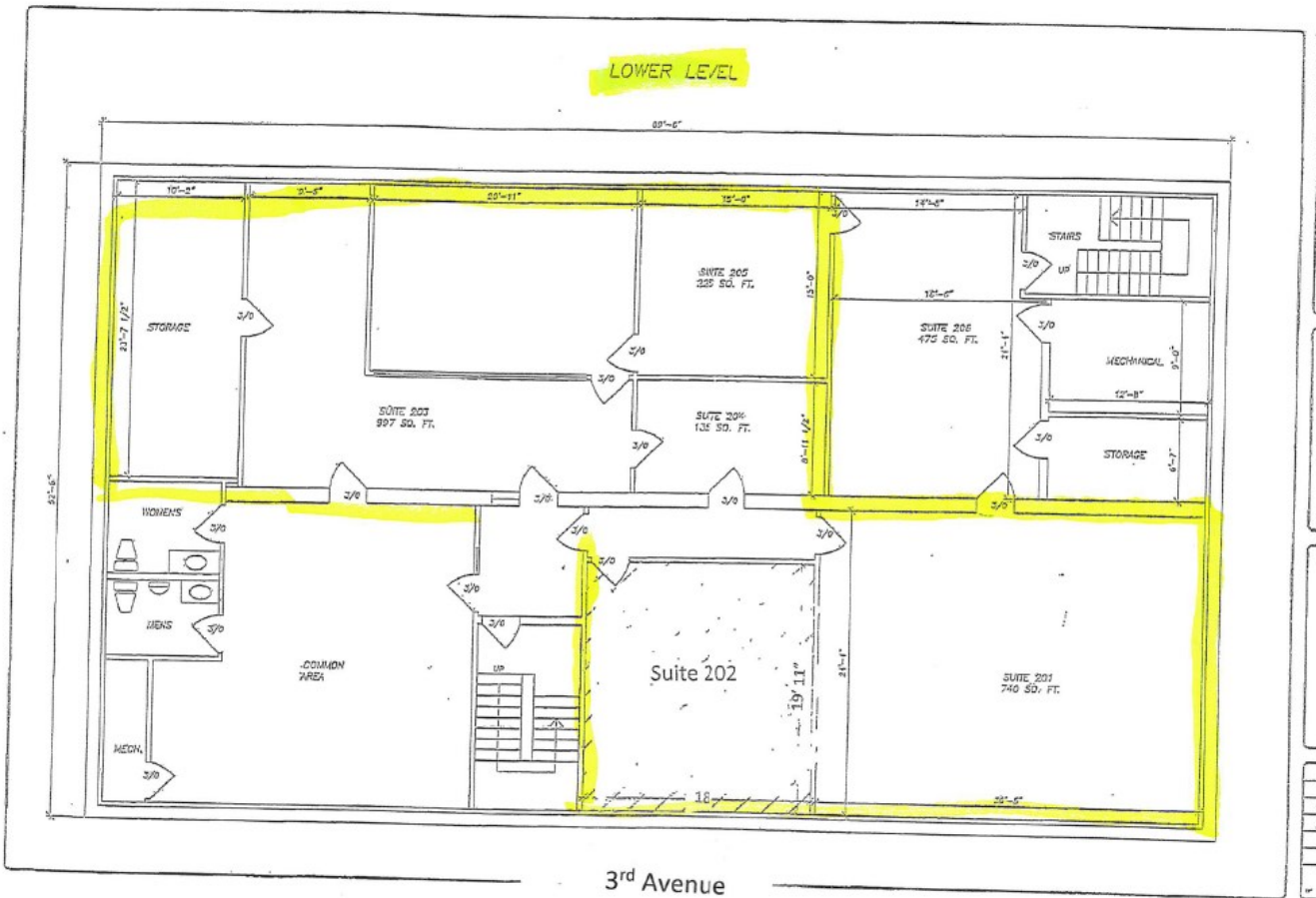
A Muske Company
920 W. Broadway, Forest Lake, MN 55025
651-464-7070
www.remaxsynergy.com

RE/MAX
Synergy



Floor Plan Lower Level

204 3rd Avenue, Osceola, WI 54020



RE/MAX
Synergy

A Muske Company
920 W. Broadway, Forest Lake, MN 55025
651-464-7070
www.remaxsynergy.com

RE/MAX
Synergy