

CLEAN WAREHOUSE WITH SECURE OUTDOOR STORAGE

1210 Sweitzer Ave.
Akron, OH 44301

**MOVE-IN READY &
ONLY 3 MINUTES TO THE HIGHWAY**

Property Features

- Available Space: 32,864 SF
- PPN: 6717168, 6800851
- Acreage: 1.92 acres
- Zoning: U-5 - Ordinary Industry
- Dock Doors: 4
- Drive-in Doors:
 - (2) 12x14 and (1) 12x10
- Ceiling Height: 14' - 16'
- New LED lights
- Updated heater
- Secured Outdoor Storage: +/-1.16 acres
- Lease Rate: \$3.50 SF NNN
- Exciting Lease Incentives

Property Description

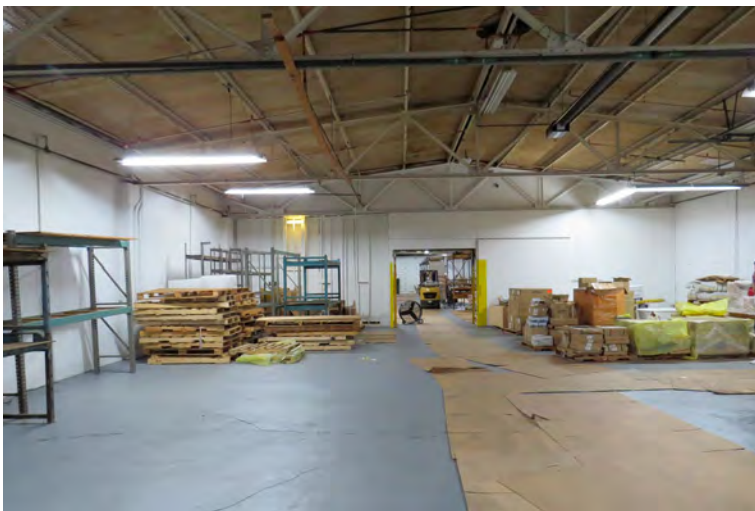
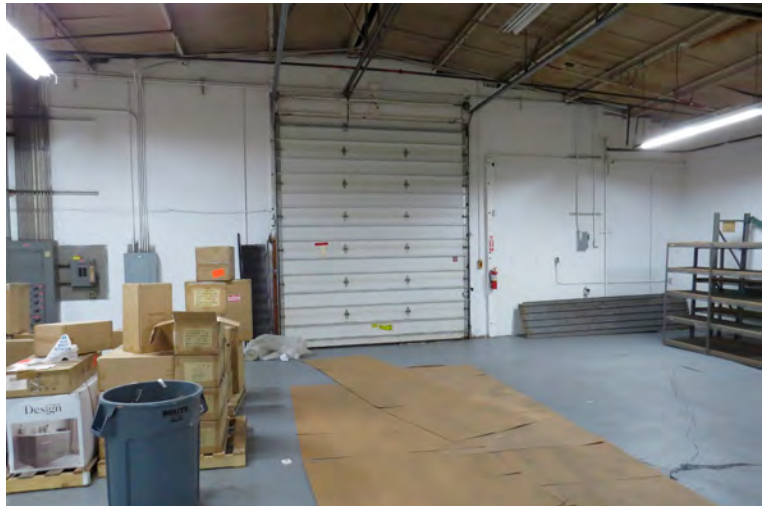
This 32,864 SF industrial warehouse on 1.92 acres is zoned U-5 and features 3 drive-in doors (two 12x14 and one 12x10), 4 dock doors, 14–16 ft ceilings, wet sprinklers, upgraded heater, and new LED lighting. Located at Sweitzer and Stanton Avenues near downtown Akron, it offers quick and easy access to I-77, I-76, and US-224—ideal for manufacturing, storage, or distribution.

David Whyte
330 352 7746
dwhyte@naipvc.com

Karen Whyte
330 351 1757
kwhyte@naipvc.com

1210 Sweitzer Ave.
Akron, OH 44301

FOR LEASE



David Whyte 330 352 7746 | dwhyte@naipvc.com

Karen Whyte 330 351 1757 | kwhyte@naipvc.com

NAIPleasant Valley
COMMERCIAL REAL ESTATE SERVICES, WORLDWIDE

540 White Pond Dr. Suite A
Akron, Ohio, 44320
+1 330 535 2661
naipvc.com

1210 Sweitzer Ave.
Akron, OH 44301

FOR LEASE



Demographics

	1 Mile	3 Miles	5 Miles
Population:	11,445	90,912	198,689
Households:	4,430	39,419	87,256
Median Age:	34.5	35.7	38.8
Average HH Income:	\$37,842	\$37,968	\$47,892
Traffic Count:	20,411 VPD S Main St @ Gottwalt St		

David Whyte 330 352 7746 | dwhyte@naipvc.com

Karen Whyte 330 351 1757 | kwhyte@naipvc.com

1210 Sweitzer Ave.
Akron, OH 44301

FOR LEASE



David Whyte 330 352 7746 | dwhyte@naipvc.com

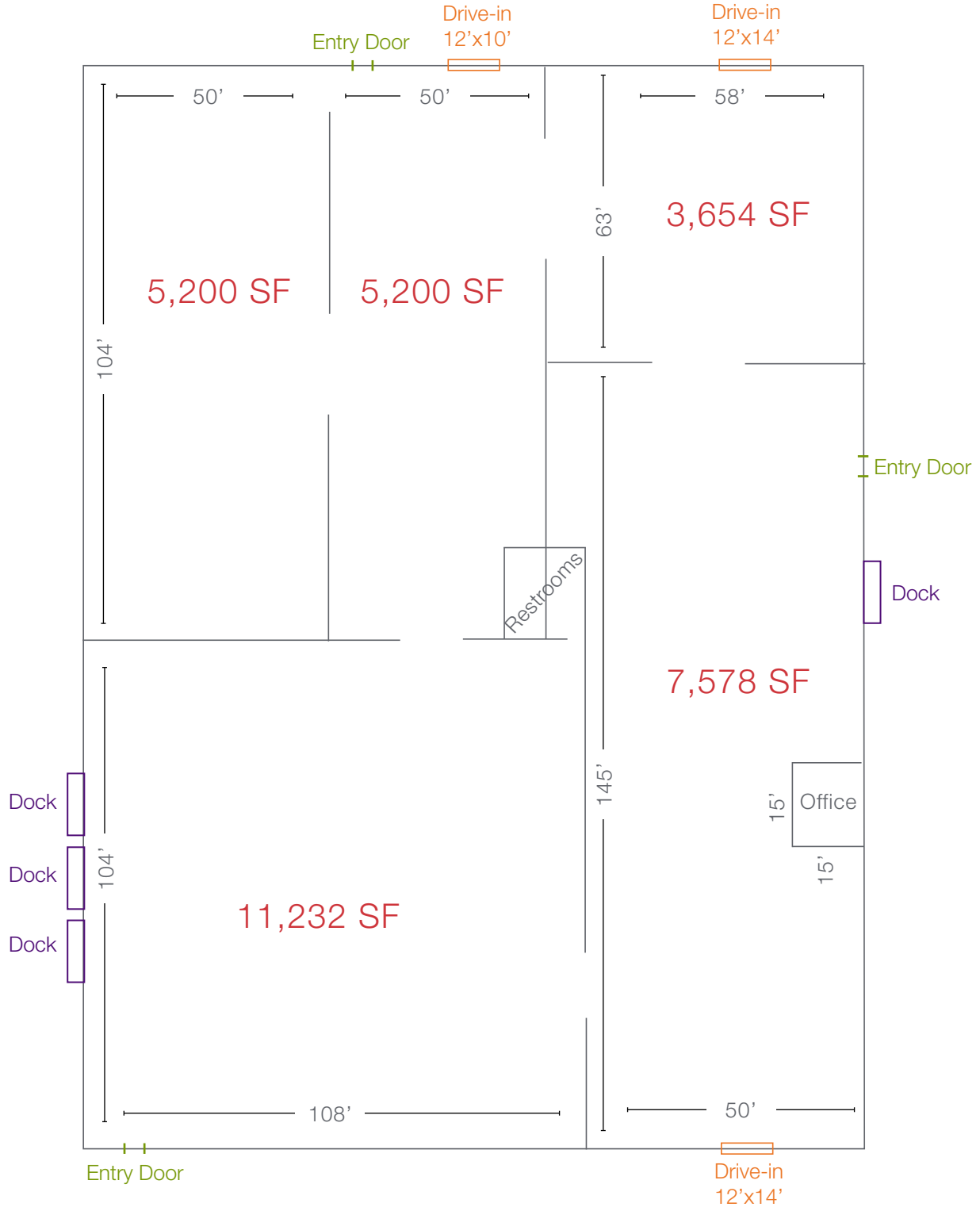
Karen Whyte 330 351 1757 | kwhyte@naipvc.com

NAIPleasant Valley
COMMERCIAL REAL ESTATE SERVICES, WORLDWIDE

540 White Pond Dr. Suite A
Akron, Ohio, 44320
+1 330 535 2661
naipvc.com

1210 Sweitzer Ave.
Akron, OH 44301

FOR LEASE

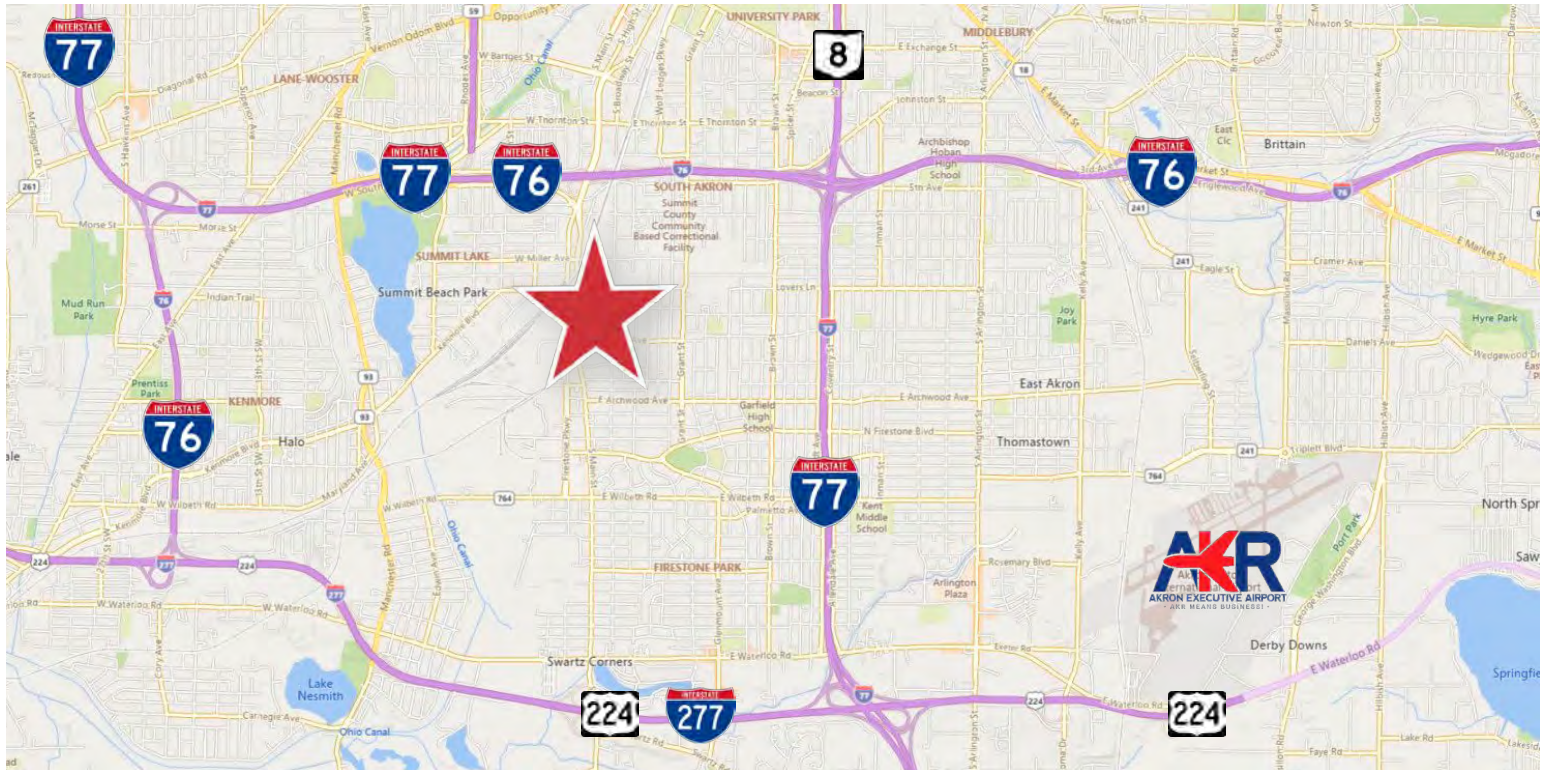


David Whyte 330 352 7746 | dwhyte@naipvc.com

Karen Whyte 330 351 1757 | kwhyte@naipvc.com

1210 Sweitzer Ave.
Akron, OH 44301

FOR LEASE



David Whyte 330 352 7746 | dwhyte@naipvc.com

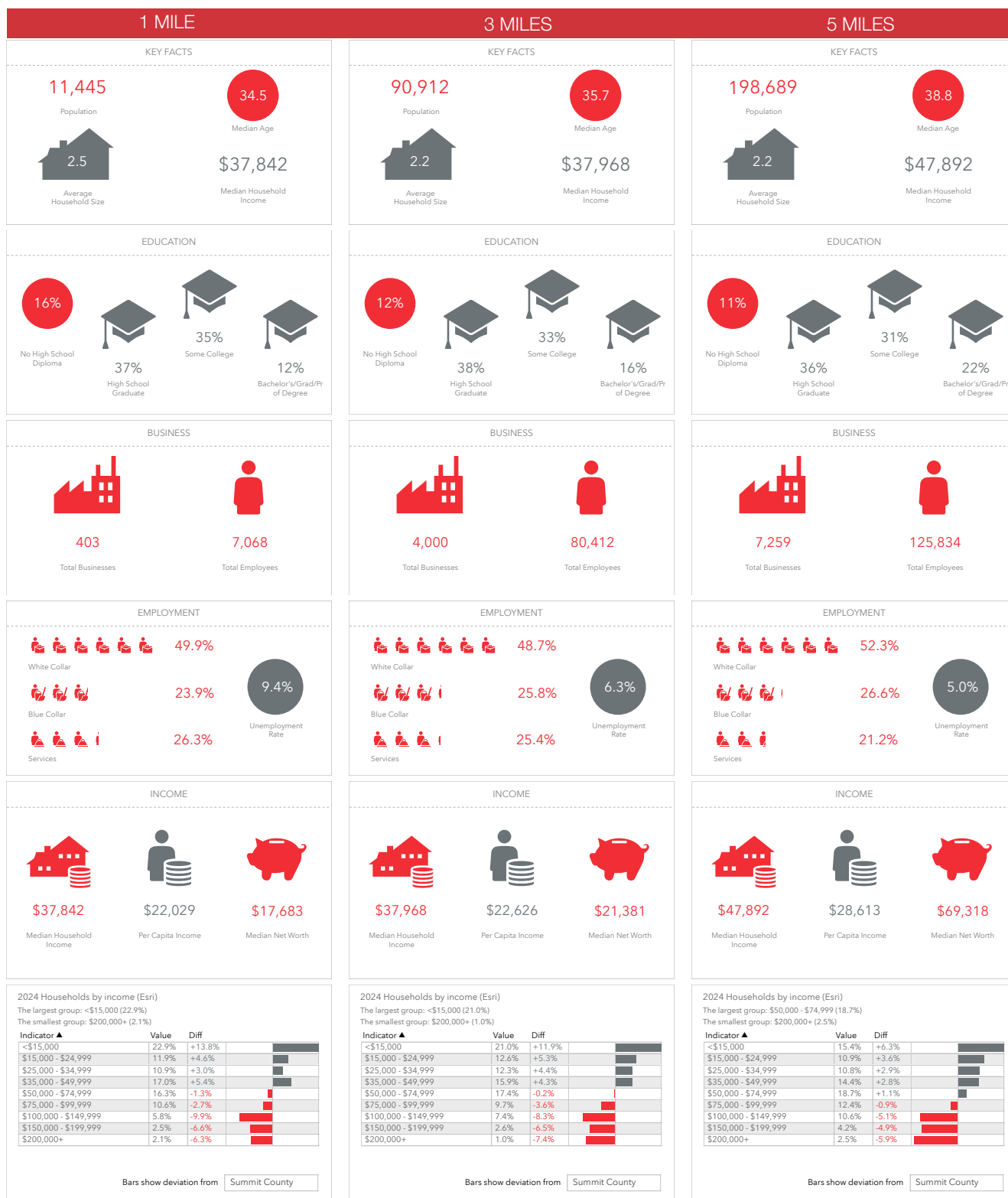
Karen Whyte 330 351 1757 | kwhyte@naipvc.com

NAIPleasant Valley
COMMERCIAL REAL ESTATE SERVICES, WORLDWIDE

540 White Pond Dr. Suite A
Akron, Ohio, 44320
+1 330 535 2661
naipvc.com

1210 Sweitzer Ave.
Akron, OH 44301

FOR LEASE



David Whyte 330 352 7746 | dwhyte@naipvc.com

Karen Whyte 330 351 1757 | kwhyte@naipvc.com

1210 Sweitzer Ave.
Akron, OH 44301

FOR LEASE

Property Details

SPACE AVAILABLE:	32,864 SF
LAND AREA:	1.92 acres
PARCEL:	6717168, 6800851
ZONING:	U-5 - Ordinary Industry
DRIVE-IN DOORS:	(3) two 12x14 and one 12x10
DOCK DOORS:	(4)
CEILING HEIGHT:	14' - 16'
SPRINKLERS:	Wet
OUTSIDE STORAGE:	+/-1.16 acres

Pricing Details

LEASE RATE:	\$3.50 SF NNN
-------------	---------------

ASK ABOUT OUR
EXCITING LEASE INCENTIVES

Notes

This 32,864 SF industrial warehouse on 1.92 acres is zoned U-5 and features 3 drive-in doors (two 12x14 and one 12x10), 4 dock doors, 14–16 ft ceilings, wet sprinklers, upgraded heater, and new LED lighting. Located at Sweitzer and Stanton Avenues near downtown Akron, it offers easy access to I-77, I-76, and US-224—ideal for manufacturing, storage, or distribution.

David Whyte 330 352 7746 | dwhyte@naipvc.com

Karen Whyte 330 351 1757 | kwhyte@naipvc.com