

385 HOMER AVENUE • PALO ALTO



# DOWNTOWN RESIDENTIAL DEVELOPMENT SITE

Presented by ANNE WILBUR

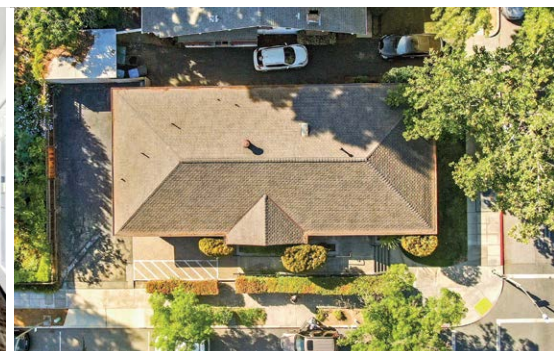
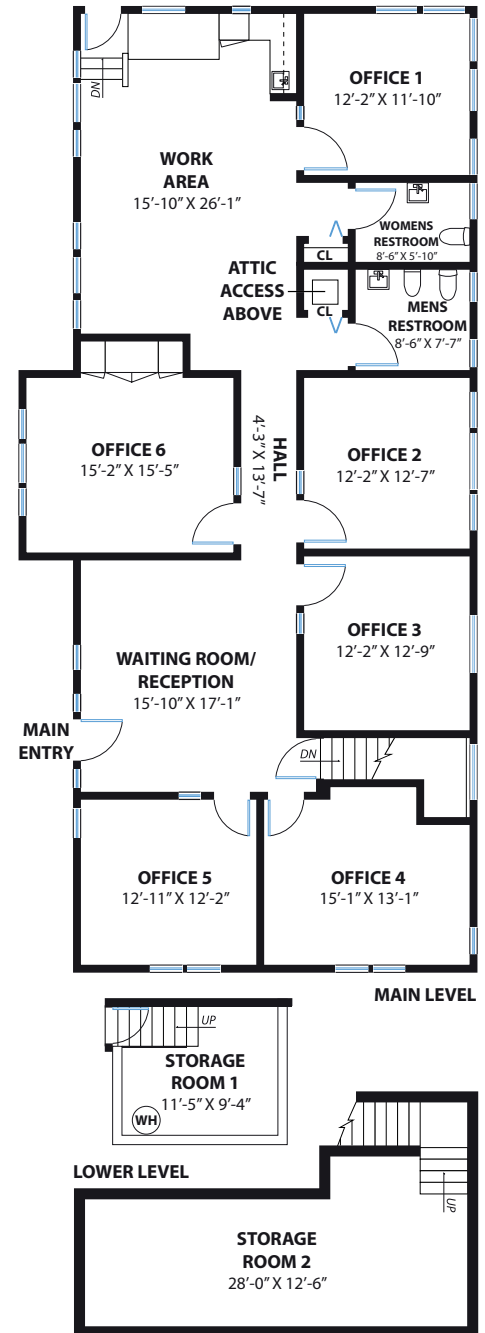
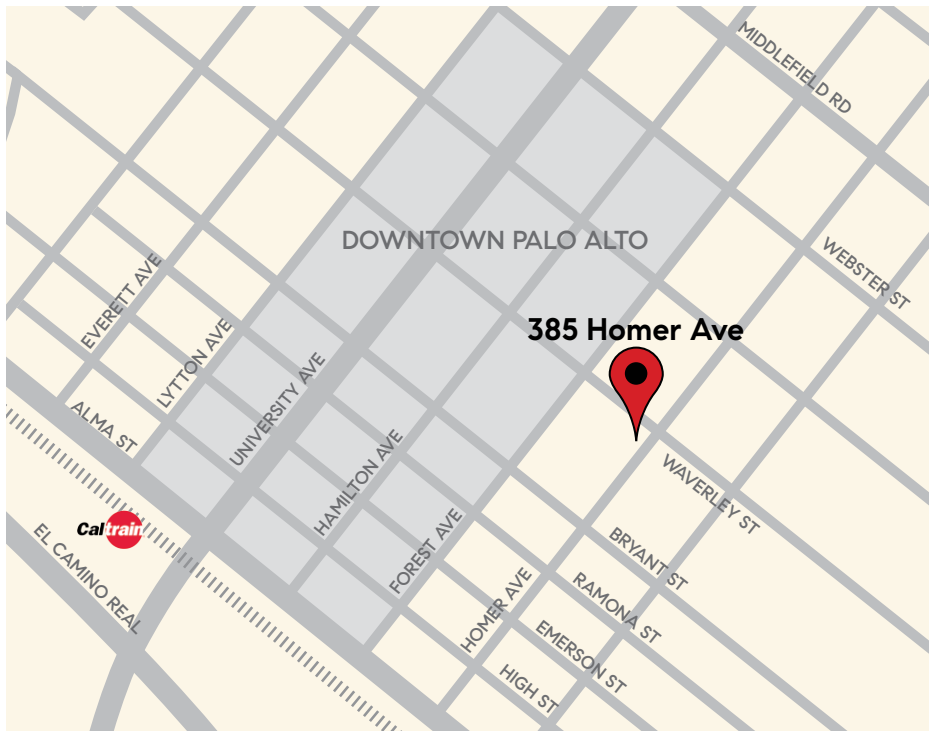




**5,000 SF IDEALLY LOCATED** at the corner of Waverley and Homer Avenue across the street from Heritage Park, just blocks from University Avenue and Whole Foods. **DHS Zoning District (Detached Houses on Small Lots) - 8-20 Units per acre.**

Currently developed as a 2,086 SF office building with basement and onsite parking. Vacant and available for immediate occupancy or conversion to residential use. The fully remodeled office building features 6 spacious private offices, two bathrooms, a kitchenette, and two separate basement storage areas.

**Offered at \$3,600,000**



**ANNE K. WILBUR, CPM**  
*Partner & Broker*  
 415.559.5557 MOBILE  
 650.847.3800 OFFICE  
 a@wilburproperties.com  
 License# 00823559



*A family-owned boutique Real Estate company since 1991 in Downtown Palo Alto.*

**WilburProperties.com**