

CLASS "A" INDUSTRIAL FOR LEASE  
**106,110 SF DISTRIBUTION SPACE**  
11650 Burke St. Santa Fe Springs, CA 90670



## PROPERTY HIGHLIGHTS

- Premier Distribution Facility
- **32' Clear Height at First Column**
- **ESFR Sprinkler System**
- Approximately 7,000 SF Offices
- Large Fenced Yard/Drive-Around Truck Access
- 200' Shared Concrete Truck Court
- 50' X 52' Column Spacing
- 2.5% Skylights
- 16 Dock High Positions
- 2 Grade Level Doors
- 2011 Building Construction
- Conveniently Located near 605 Freeway
- **Available Now**
- **Lease Rate: \$1.79 Gross PSF**



Joel Hutak  
jhutak@lee-associates.com  
D 714.564.7169  
CalBRE #01411356

Phillip De Rouse  
pderousse@lee-associates.com  
D 714.564.7141  
CalBRE #01933061

[CLICK FOR WEBSITE](#)

All information furnished regarding property for sale, rental or financing is from sources deemed reliable, but no warranty or representation is made to the accuracy thereof and same is submitted to errors, omissions, change of price, rental or other conditions prior to sale, lease or financing or withdrawal without notice. No liability of any kind is to be imposed on the broker herein.

CLASS "A" INDUSTRIAL FOR LEASE  
**106,110 SF DISTRIBUTION SPACE**  
11650 Burke St. Santa Fe Springs, CA 90670



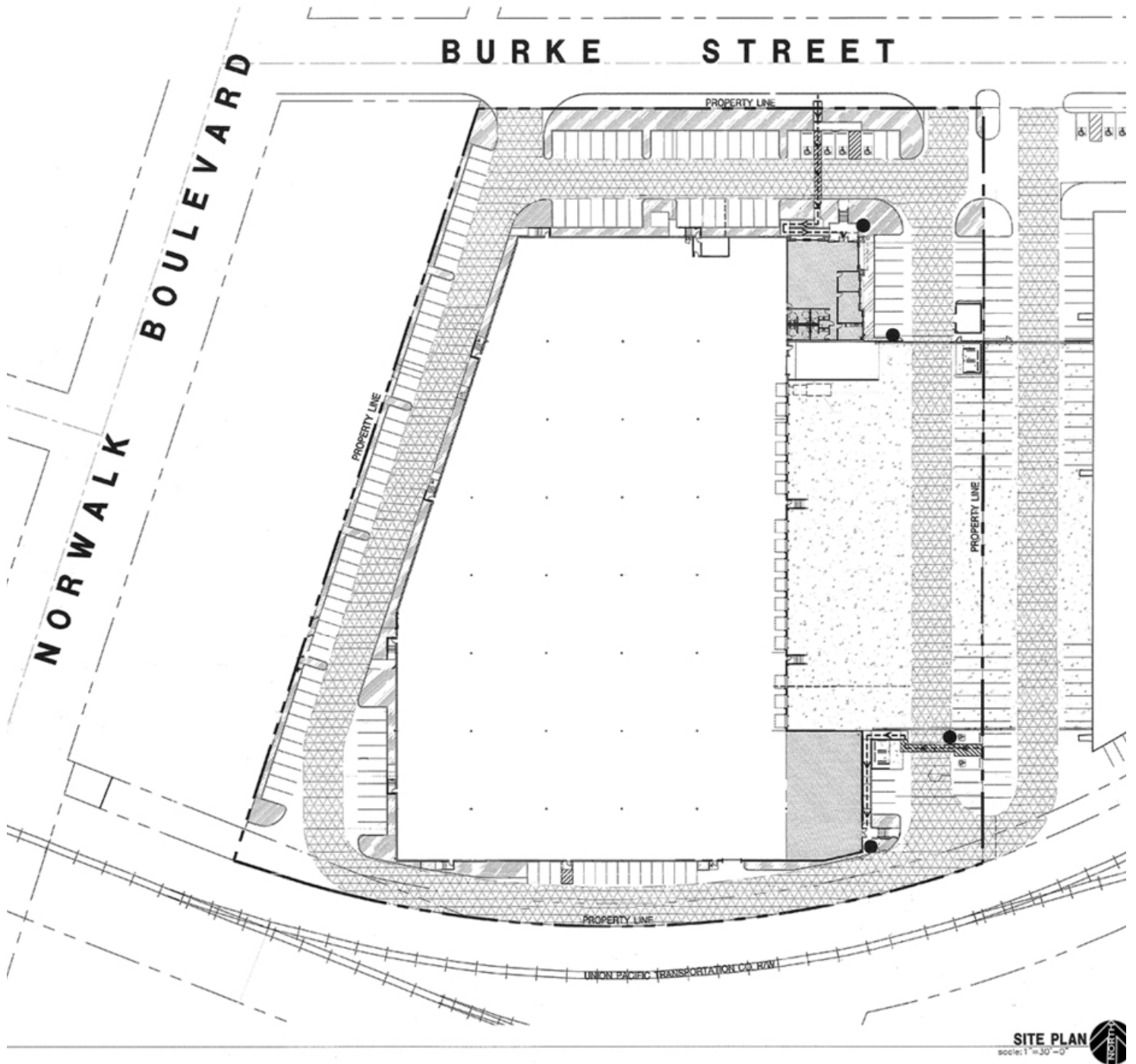
Joel Hutak  
jhutak@lee-associates.com  
D 714.564.7169  
CalBRE #01411356

Phillip De Rouse  
pderousse@lee-associates.com  
D 714.564.7141  
CalBRE #01933061

[CLICK FOR WEBSITE](#)

All information furnished regarding property for sale, rental or financing is from sources deemed reliable, but no warranty or representation is made to the accuracy thereof and same is submitted to errors, omissions, change of price, rental or other conditions prior to sale, lease or financing or withdrawal without notice. No liability of any kind is to be imposed on the broker herein.

CLASS "A" INDUSTRIAL FOR LEASE  
**106,110 SF DISTRIBUTION SPACE**  
11650 Burke St. Santa Fe Springs, CA 90670



Joel Hutak  
jhutak@lee-associates.com  
D 714.564.7169  
CalBRE #01411356

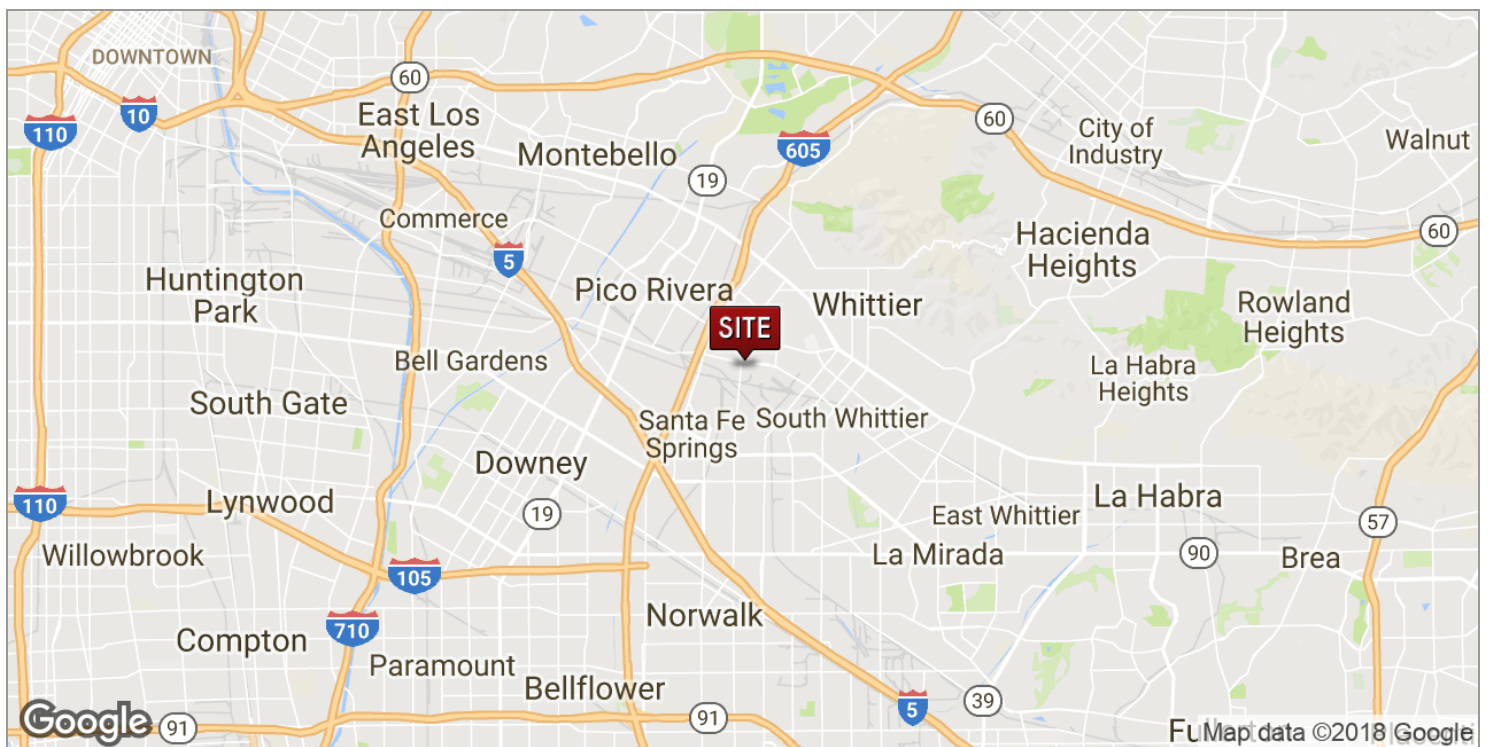
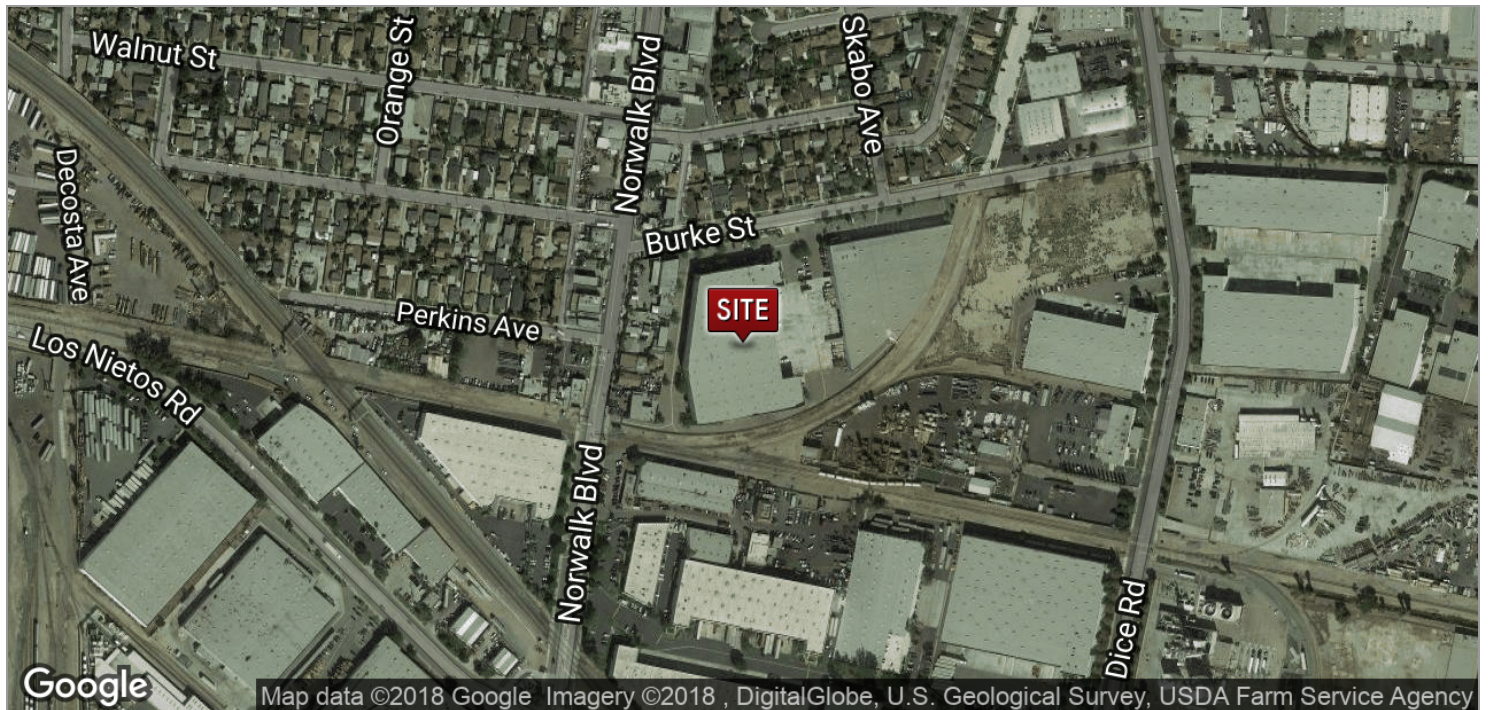
Phillip De Rouse  
pderousse@lee-associates.com  
D 714.564.7141  
CalBRE #01933061

[CLICK FOR WEBSITE](#)

All information furnished regarding property for sale, rental or financing is from sources deemed reliable, but no warranty or representation is made to the accuracy thereof and same is submitted to errors, omissions, change of price, rental or other conditions prior to sale, lease or financing or withdrawal without notice. No liability of any kind is to be imposed on the broker herein.

# CLASS "A" INDUSTRIAL FOR LEASE 106,110 SF DISTRIBUTION SPACE

11650 Burke St. Santa Fe Springs, CA 90670



Joel Hutak  
jhutak@lee-associates.com  
D 714.564.7169  
CalBRE #01411356

Phillip De Rouse  
pderousse@lee-associates.com  
D 714.564.7141  
CalBRE #01933061

[CLICK FOR WEBSITE](#)

All information furnished regarding property for sale, rental or financing is from sources deemed reliable, but no warranty or representation is made to the accuracy thereof and same is submitted to errors, omissions, change of price, rental or other conditions prior to sale, lease or financing or withdrawal without notice. No liability of any kind is to be imposed on the broker herein.