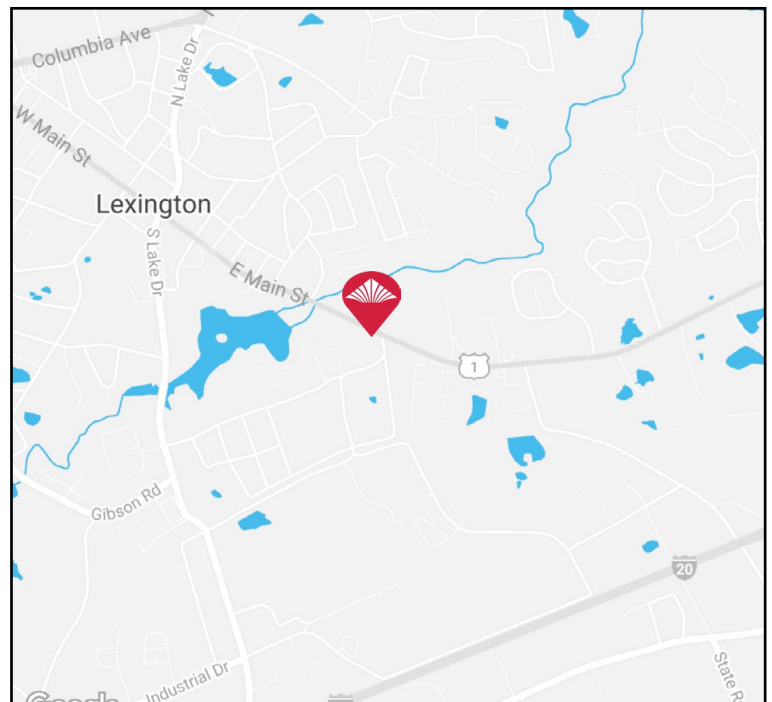
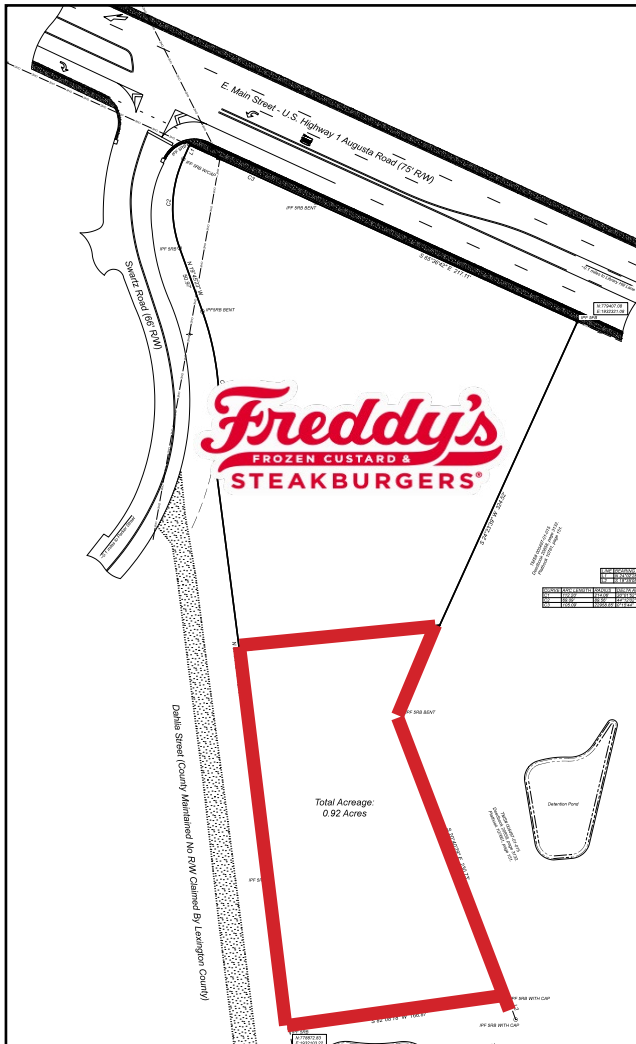


# +/- 0.92 ACRES Behind Freddy's

LEXINGTON, SOUTH CAROLINA 29072

[CLICK HERE FOR DRONE FOOTAGE](#)



Prime Development Opportunity

+/- 0.92 Acres

41,800 VPD on Hwy 1

Zoned GC

Office / Law Firm / Dentist or Medical Office

Land has been Graded

**Sales Price: \$99,999**

## CONTACT:

JOHN METTS, CCIM | [john.metts@wilsonkibler.com](mailto:john.metts@wilsonkibler.com) | 803.255.8631

MICHAEL CROWLEY | [michael.crowley@wilsonkibler.com](mailto:michael.crowley@wilsonkibler.com) | 803.255.8615

WILSON KIBLER | 1545 Sumter Street | 803.779.8600 | [www.wilsonkibler.com](http://www.wilsonkibler.com)

The information contained herein has been obtained from sources we believe to be reliable; however, Wilson Kibler has not conducted any investigation regarding these matters and makes no warranty or representation whatsoever regarding the accuracy or completeness of the information provided.



**Wilson Kibler**  
COMMERCIAL REAL ESTATE

# +/- 0.92 ACRES Behind Freddy's

LEXINGTON, SOUTH CAROLINA 29072

[CLICK HERE FOR DRONE FOOTAGE](#)



## CONTACT:

JOHN METTS, CCIM | [john.metts@wilsonkibler.com](mailto:john.metts@wilsonkibler.com) | 803.255.8631

MICHAEL CROWLEY | [michael.crowley@wilsonkibler.com](mailto:michael.crowley@wilsonkibler.com) | 803.255.8615

WILSON KIBLER | 1545 Sumter Street | 803.779.8600 | [www.wilsonkibler.com](http://www.wilsonkibler.com)

The information contained herein has been obtained from sources we believe to be reliable; however, Wilson Kibler has not conducted any investigation regarding these matters and makes no warranty or representation whatsoever regarding the accuracy or completeness of the information provided.

