

RETAIL PROPERTY FOR LEASE

SHOPPES AT CLIFFDALE

9566 Cliffdale Rd, Fayetteville, NC 28304



for more information

PATRICK MURRAY, CCIM, SIOR

Principal / Broker in Charge
O: 910.829.1617 x202
C: 910.988.5284
patrick@grantmurrayre.com



Grant - Murray
REAL ESTATE, LLC
COMMERCIAL AND INVESTMENT BROKERAGE

150 N. McPherson Church Rd | Fayetteville, NC 28303 | www.grantmurrayre.com

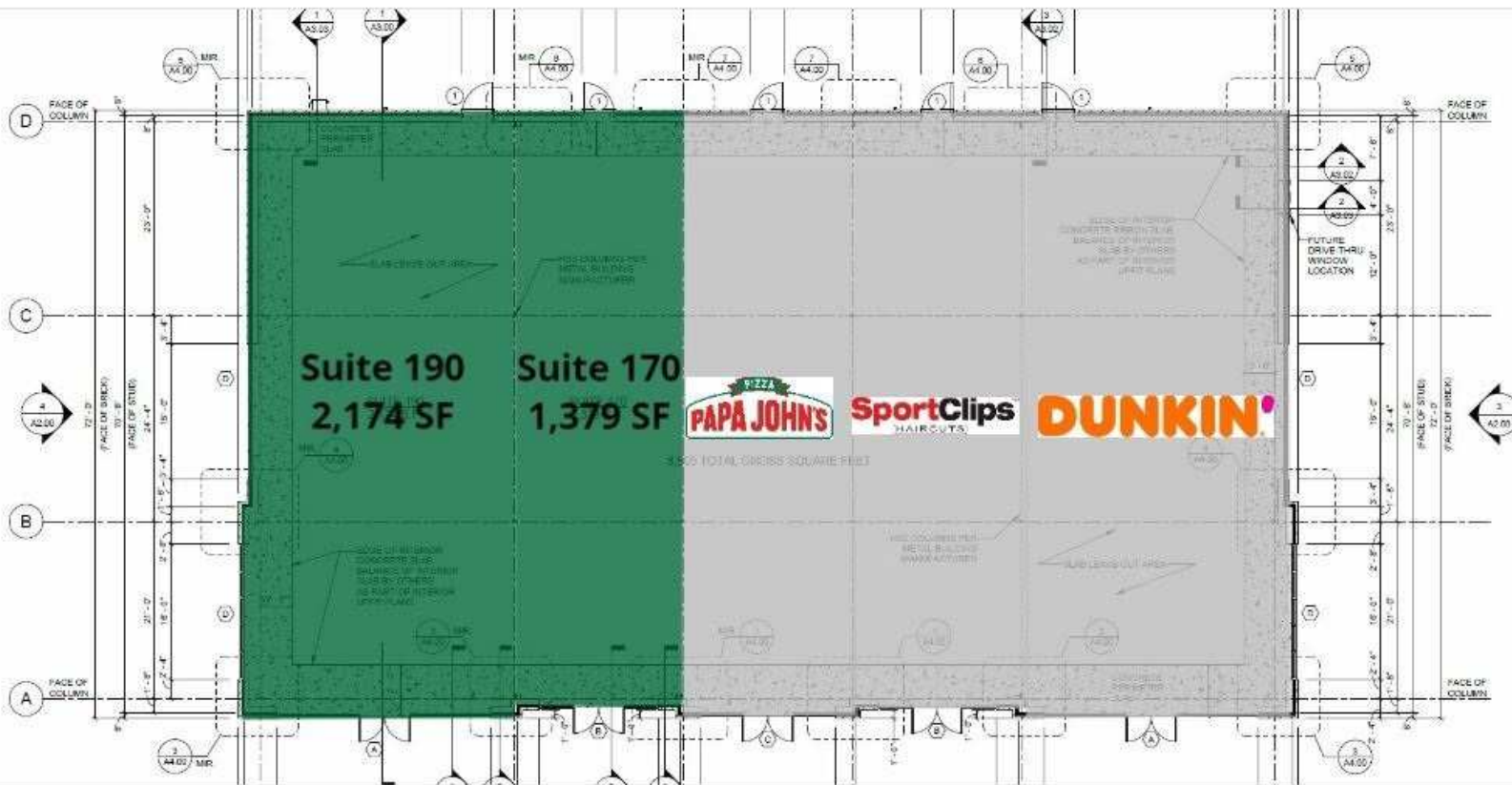


PROPERTY OVERVIEW

Available SF:	1,379 - 3,553 SF
Lease Rate:	\$25.00 SF/yr (NNN)
Lot Size:	2.67 Acres
Year Built:	2020
Building Size:	8,505 SF
Zoning:	LC
Submarket:	West Fayetteville
Traffic Count:	Raeford Rd-40,000

Property Description

JOIN DUNKIN, SPORTS CLIPS, & PAPA JOHNS! THE SHOPPES AT CLIFFDALE IS A RECENTLY CONSTRUCTED STRIP CENTER IN WEST FAYETTEVILLE THAT IS CURRENTLY UNDER CONSTRUCTION. TWO SPACES REMAINING THAT ARE 1,379 SF AND 2,174 SF WHICH CAN BE COMBINED FOR A TOTAL OF 3,553 SF. SPACES ARE CURRENTLY IN COLD, DARK SHELL CONDITION. PYLON SIGNAGE IS AVAILABLE AND THE PROPERTY HAS CROSS ACCESS BETWEEN THE GOODWILL AND ZAXBY'S PARKING LOTS.



Available



Unavailable

Space Name	Space Size	Lease Rate	Lease Term	Space Type
Suite 170	1,379 - 3,553 SF	\$25.00 SF/yr	Negotiable	Strip Center
Suite 190	2,174 - 3,553 SF	\$25.00 SF/yr	Negotiable	Strip Center

for more information

PATRICK MURRAY, CCIM, SIOR

Principal / Broker in Charge
 O: 910.829.1617 x202
 C: 910.988.5284
 patrick@grantmurrayre.com



Grant - Murray
 REAL ESTATE, LLC
 COMMERCIAL AND INVESTMENT BROKERAGE



**Future
Self-Storage**

for more information

PATRICK MURRAY, CCIM, SIOR

Principal / Broker in Charge

O: 910.829.1617 x202

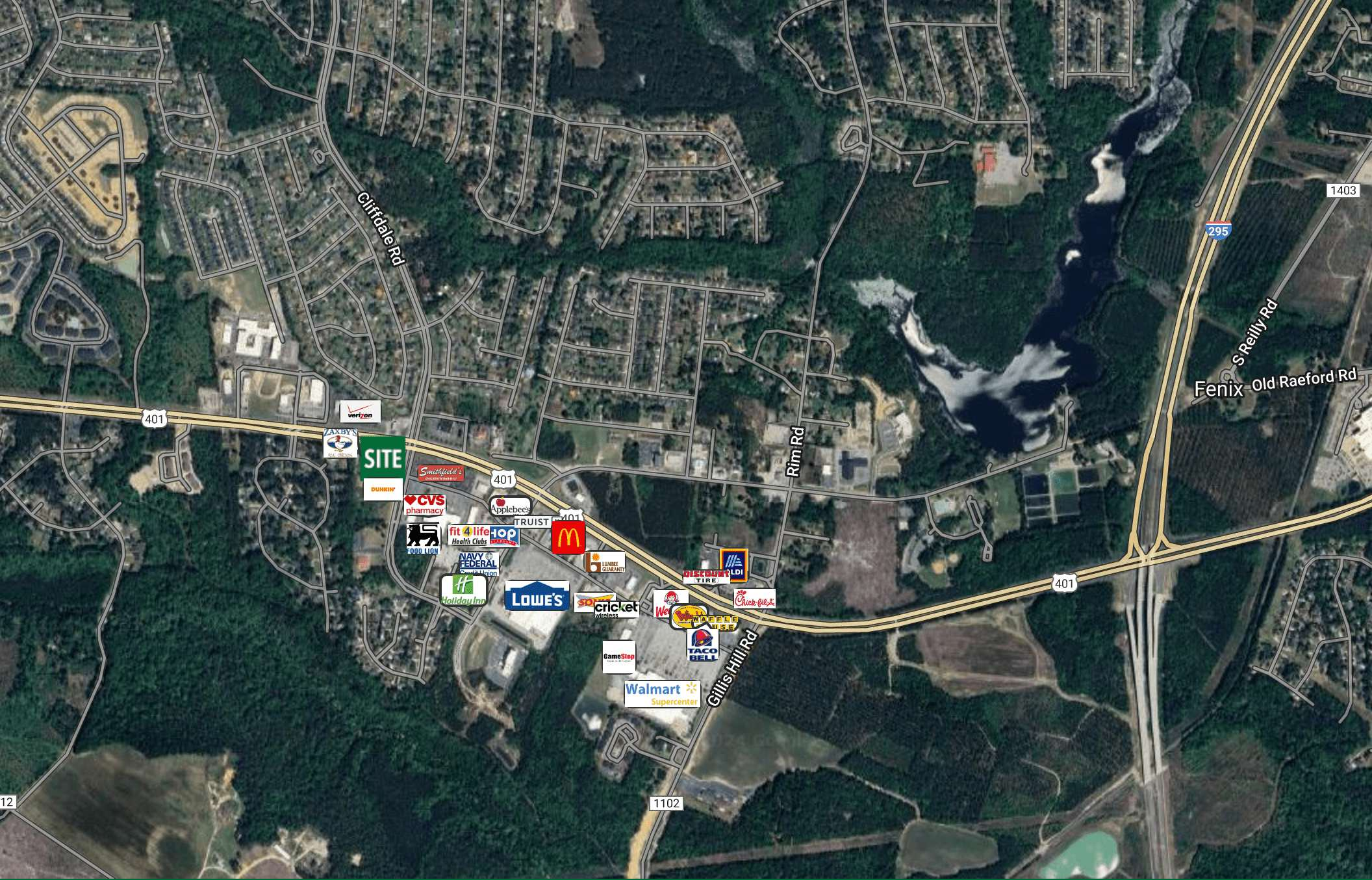
C: 910.988.5284

patrick@grantmurrayre.com



Grant - Murray
REAL ESTATE, LLC
COMMERCIAL AND INVESTMENT BROKERAGE

150 N. McPherson Church Rd | Fayetteville, NC 28303 | www.grantmurrayre.com



for more information

PATRICK MURRAY, CCIM, SIOR

Principal / Broker in Charge

O: 910.829.1617 x202

C: 910.988.5284

patrick@grantmurrayre.com

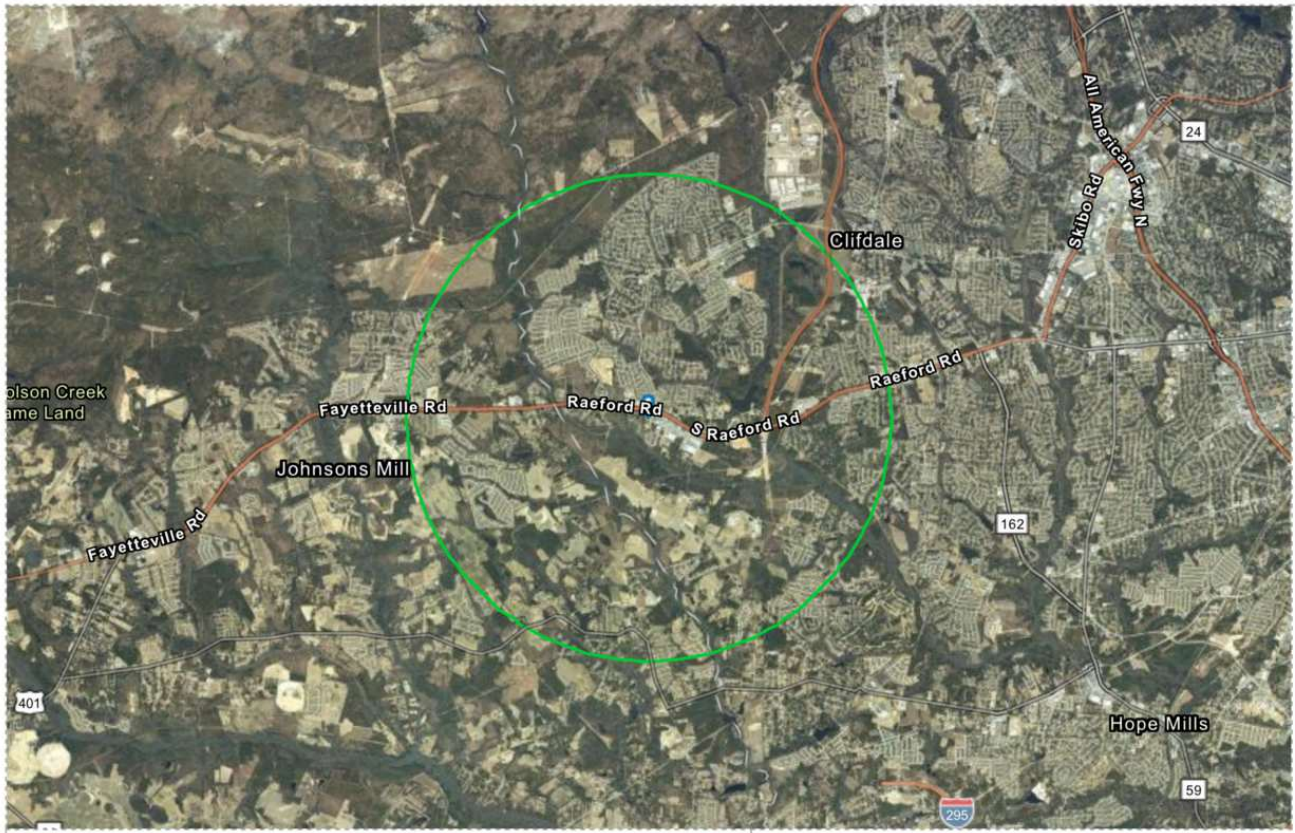


Grant - Murray
REAL ESTATE, LLC

COMMERCIAL AND INVESTMENT BROKERAGE

150 N. McPherson Church Rd | Fayetteville, NC 28303 | www.grantmurrayre.com

Map data © 2024 Imagery © 2024 Google, CNES, Airbus, Maxar Technologies, USDA/FPAC/GEO



EDUCATION



No High School Diploma



22%

High School Graduate



32%

Bachelors/Grad/Prof Degree

EMPLOYMENT



63%

White Collar



22%

Blue Collar



15%

Services



Unemployment Rate

KEY FACTS



38,237

Total Population



13,968

Total Households



\$69,600

Median Household Income



Median Age

BUSINESS



588

Total Businesses



5,491

Total Employees

INCOME



\$55,633

Median Disposable Income



\$32,066

Per Capita Income



\$99,697

Median Net Worth

Source: This infographic contains data provided by Esri (2023, 2028), Esri-Data Axle (2023).

©2024 Esri

Page 2 of 3

February 28, 2024

for more information

PATRICK MURRAY, CCIM, SIOR

Principal / Broker in Charge
 O: 910.829.1617 x202
 C: 910.988.5284
 patrick@grantmurrayre.com



Grant - Murray
 REAL ESTATE, LLC
 COMMERCIAL AND INVESTMENT BROKERAGE

150 N. McPherson Church Rd | Fayetteville, NC 28303 | www.grantmurrayre.com

- #2 Best Place in America to Invest in Real Estate (Fortune, 2020)
- Top 50 Most Diverse Cities in America (Niche, 2020)
- Best Places for Business and Careers (Forbes, 2019)
- Top 50 Cheapest Places to Retire MSN Money, 2018)
- Most affordable housing in the USA for first-time home buyers (WalletHub, 2017)
- Vibrant downtown featuring museums, live music, & award-winning performing arts and cultural events
- Home of the International Folk Festival, Bi-Annual Dogwood Festival, When Pigs Fly All-American BBQ Festival, & more
- 520 Restaurants, breweries, wine bars, & more
- Professional & collegiate sporting events
- World-class golf courses



Why Fayetteville?

408,763

30-minute trade area

\$9.9B

total consumer spending

\$77,340

avg household income

6M+ SF

retail in area submarket

for more information

PATRICK MURRAY, CCIM, SIOR

Principal / Broker in Charge
 O: 910.829.1617 x202
 C: 910.988.5284
 patrick@grantmurrayre.com



Grant - Murray
 REAL ESTATE, LLC
 COMMERCIAL AND INVESTMENT BROKERAGE