

**FOUNDERS TOWER
5900 MOSTELLER DRIVE, SUITE 21
OKLAHOMA CITY, OK 73112**

Executive Suites For Lease

\$550-\$750/Month Full Service

Suite 2: 219 RSF

Suite 6: 237 RSF

Suite 7: 300 RSF

Suite 10: 178 RSF

Suite 11: 146 RSF

Cubicles Available For Lease-\$400/Month

NAIRED

**COMMERCIAL
REAL ESTATE**



NAIRED

**405.840.0600
NAIRED.COM**

**AMANDA SULLIVAN
405.323.6423
AMANDA@NAIRED.COM**



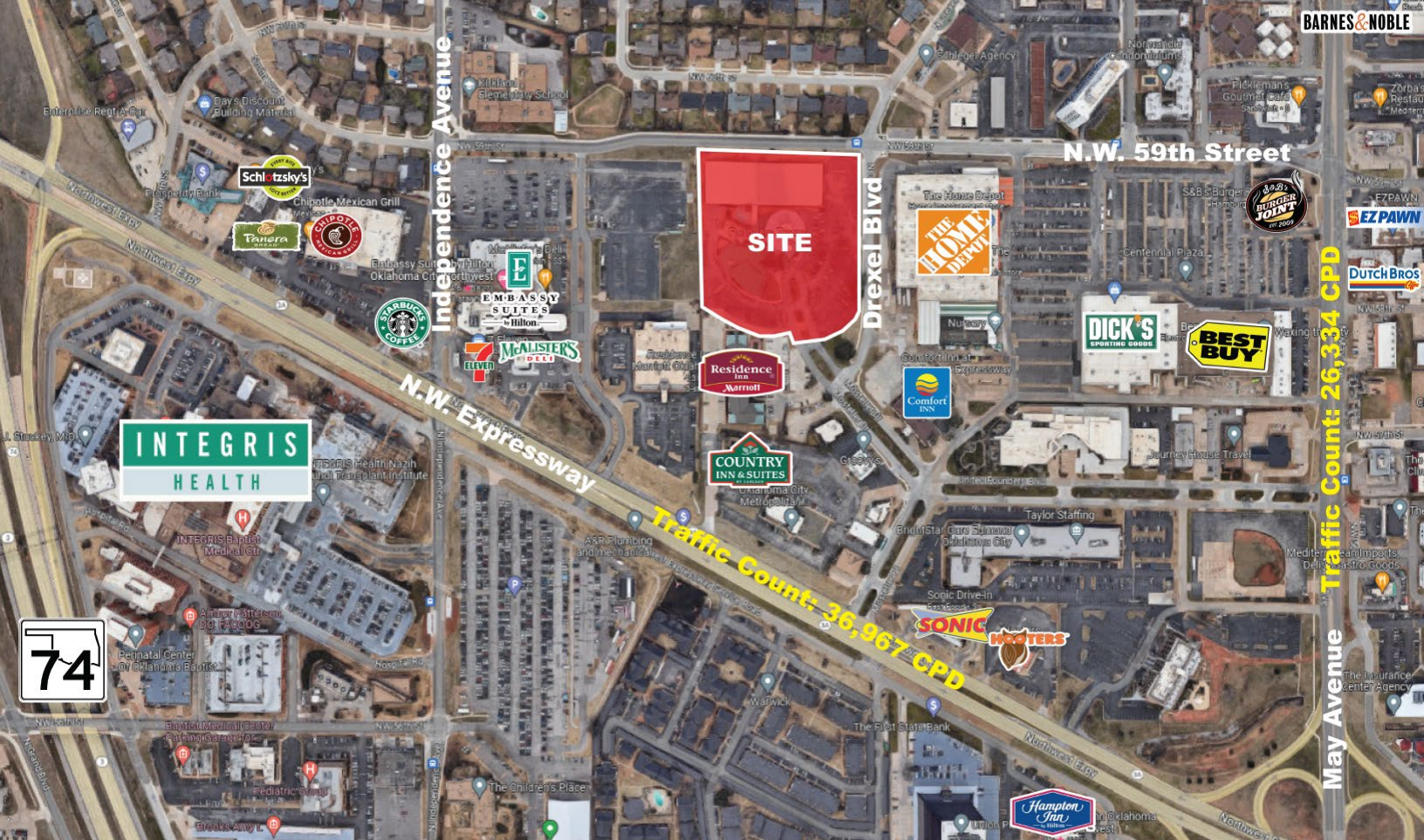
PROPERTY HIGHLIGHTS

- Furnished, Executive Class Suites
Located in Historic Landmark
Founders Tower
- Flat Monthly Fee-Full Service
Lease
- Various Suite Sizes, Including
Cubicles
- 24-Hour Access & Concierge
- Secured Access with Key Fob
- Furnished Break Room
- Conference Room with Audio &
Video Capabilities
- Office Supplies/Printer/Scanning
Room
- Male & Female ADA Restrooms
- Free On-Site Parking
- 9 Foot Ceiling Height
- 2nd Floor SF: 5,343 SF
- AT&T Fiber
- Collaborative Space
- Fast & Secure Internet with a
Dedicated Firewall for Each
Business
- Natural Lighting
- Built in 1964 & Renovated in
2008



405.840.0600
NAIRED.COM

AMANDA SULLIVAN
405.323.6423
AMANDA@NAIRED.COM



EXECUTIVE SUMMARY

The historic Founder's Tower has Executive Class Suites available on the second floor. The executive suites provide private offices and cubicles for lease, furnished or unfurnished. The amenities include a concierge, 24-hour secure access with a key fob, a stocked break room, free parking, plus **LOCATION, LOCATION, LOCATION!**

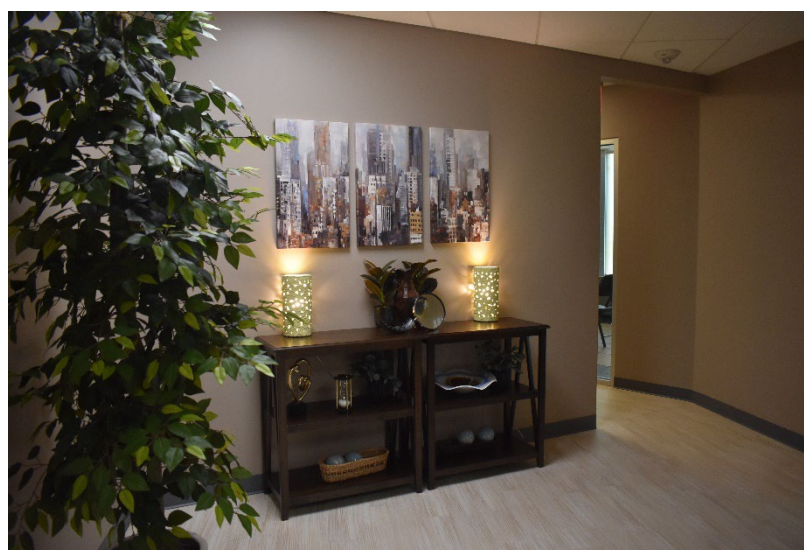
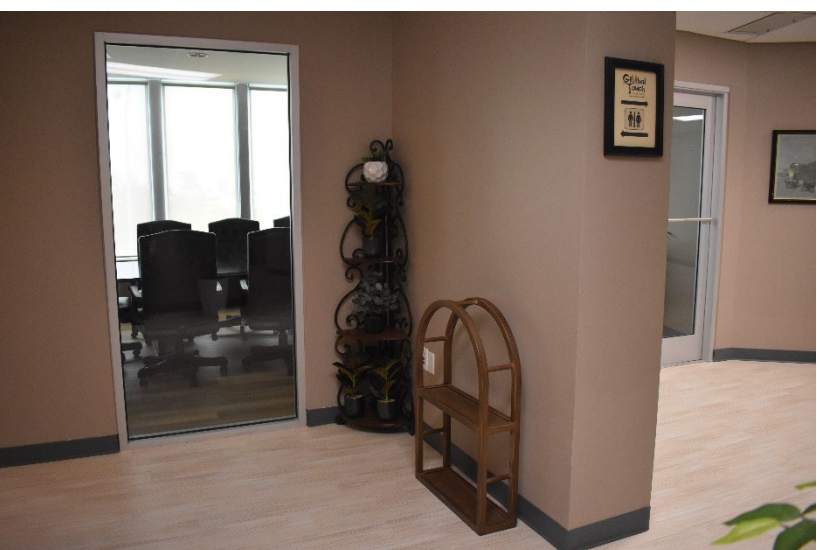
Founder's Tower has a 360-degree panoramic view. The Googie-Style architecture is on the National Register of Historic Places since April 15, 2013. Founder's Tower is a multi-use building with office space and luxury condominiums.

Founder's Tower is a prime location in northwest Oklahoma City. Easy access to I-44 and Hefner Parkway. Close to Integris Baptist Medical Center, banking, shopping and numerous restaurants. Founder's Tower is west of May Avenue and the redevelopment of Mayfair Village Shopping center and national retail brands.

NAIRED

405.840.0600
NAIRED.COM

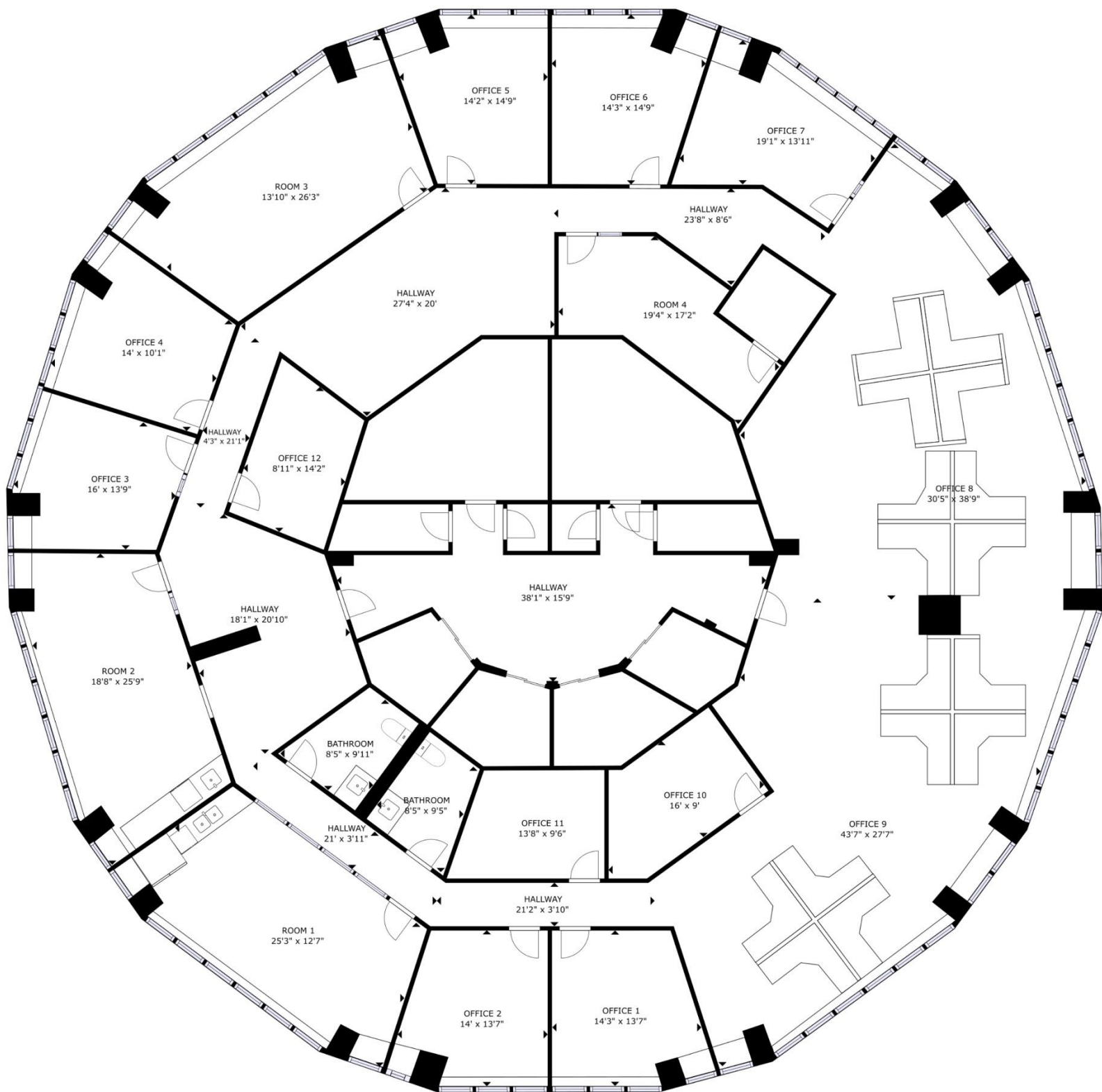
AMANDA SULLIVAN
405.323.6423
AMANDA@NAIRED.COM



NAIRED

405.840.0600
NAIRED.COM

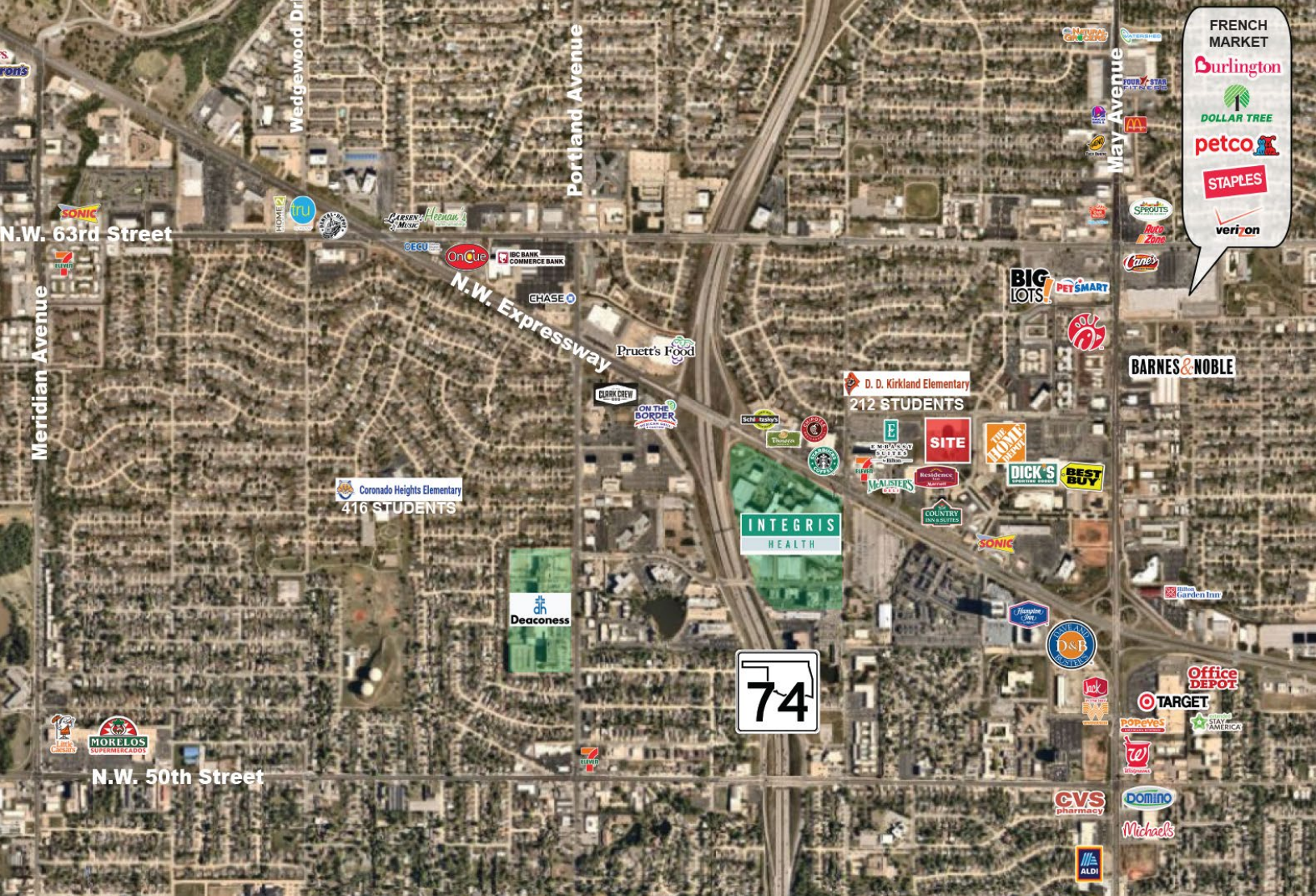
AMANDA SULLIVAN
405.323.6423
AMANDA@NAIRED.COM



NAIRED

405.840.0600
NAIRED.COM

AMANDA SULLIVAN
405.323.6423
AMANDA@NAIRED.COM



DEMOGRAPHICS

	1 MILE	3 MILE	5 MILE
POPULATION	11,465	88,030	237,952
AVERAGE HOUSEHOLD INCOME	\$81,675	\$79,276	\$74,845
TOTAL HOUSEHOLDS	5,817	40,598	103,979

NAIRED

405.840.0600
NAIRED.COM

FOLLOW US @NAIRED_CRE



No warranty or representation, express or implied, is made as to the accuracy of the information contained herein, and the same is submitted subject to errors, omissions, change of price, rental or other conditions, prior to sale, lease, or financing, or withdrawal without notice, and of any special listing conditions imposed by our principals no warranties or representations are made as to the condition of the property or any hazards contained therein are any to be implied.