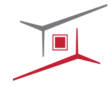


# FOR LEASE

119 E Uwchlan Ave, Exton PA 19341



JACKSON CROSS  
PARTNERS®

828 sf & 3,465 sf MEDICAL OFFICES AVAILABLE



## Property Highlights

- Modern medical offices available in Exton.
- Easy access to highways.
- Suite 201 - 3,465 sf
- Suite 102 - 828 sf

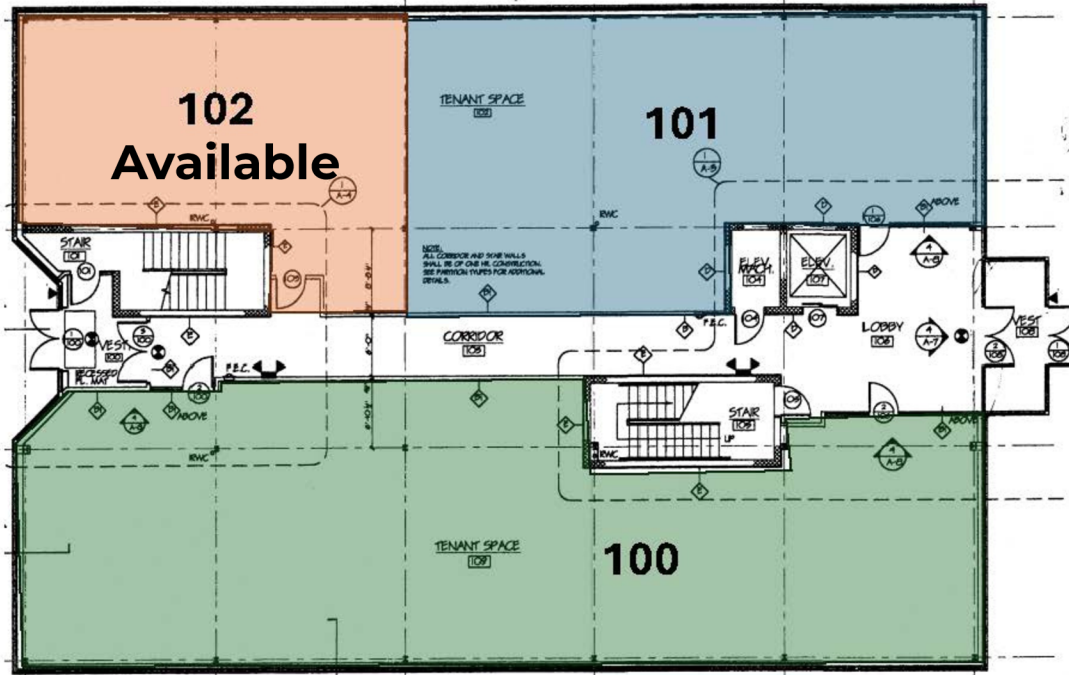


# FOR LEASE

119 E Uwchlan Ave, Exton PA 19341

## Floor Plan

First Floor - 119 E Uwchlan Ave, Exton, PA



Second Floor - 119 E Uwchlan Ave, Exton, PA

