



24 BELDEN AVENUE - APARTMENT SET

BELDEN AVE.
NORWALK, CT

Site Plan Submission: Issued 11/15/24

ARCHITECTURAL DRAWINGS				SITE PLAN: 11/15/24
SHEET #	DRAWING TITLE	REV. DATE		
T-001	TITLE SHEET		•	
A-01	UNIT ANALYSIS		•	
A-100	GARAGE PLAN		•	
A-101	1ST FLOOR PLAN		•	
A-102	2ND FLOOR PLAN		•	
A-103	3RD & 4TH FLOOR PLAN		•	
A-104	5TH FLOOR PLAN		•	
A-105	6TH FLOOR PLAN		•	
A-106	ROOF PLAN		•	
A-200	BUILDING ELEVATIONS		•	
A-201	BUILDING ELEVATIONS		•	
A-202	BUILDING SECTIONS		•	
A-203	BUILDING SECTIONS		•	
A-204	BUILDING SECTIONS		•	
A-210	ENLARGED ELEVATIONS		•	
		TOTAL	15	

Revisions:

Drawing Title:
TITLE SHEET

Project:
24 BELDEN AVENUE

Belden Avenue & Burnell Blvd
Norwalk, Connecticut

Consultant:

Architect:
The SULLIVAN Architectural Group
155 N. Broad Street, Milford, Connecticut 06460
ph: (203) 254-8680



Date: 11/15/24

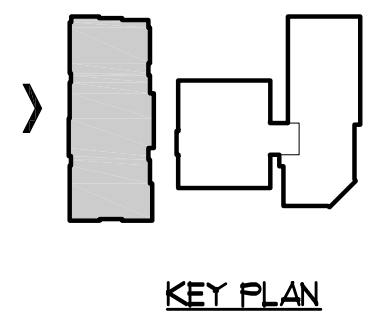
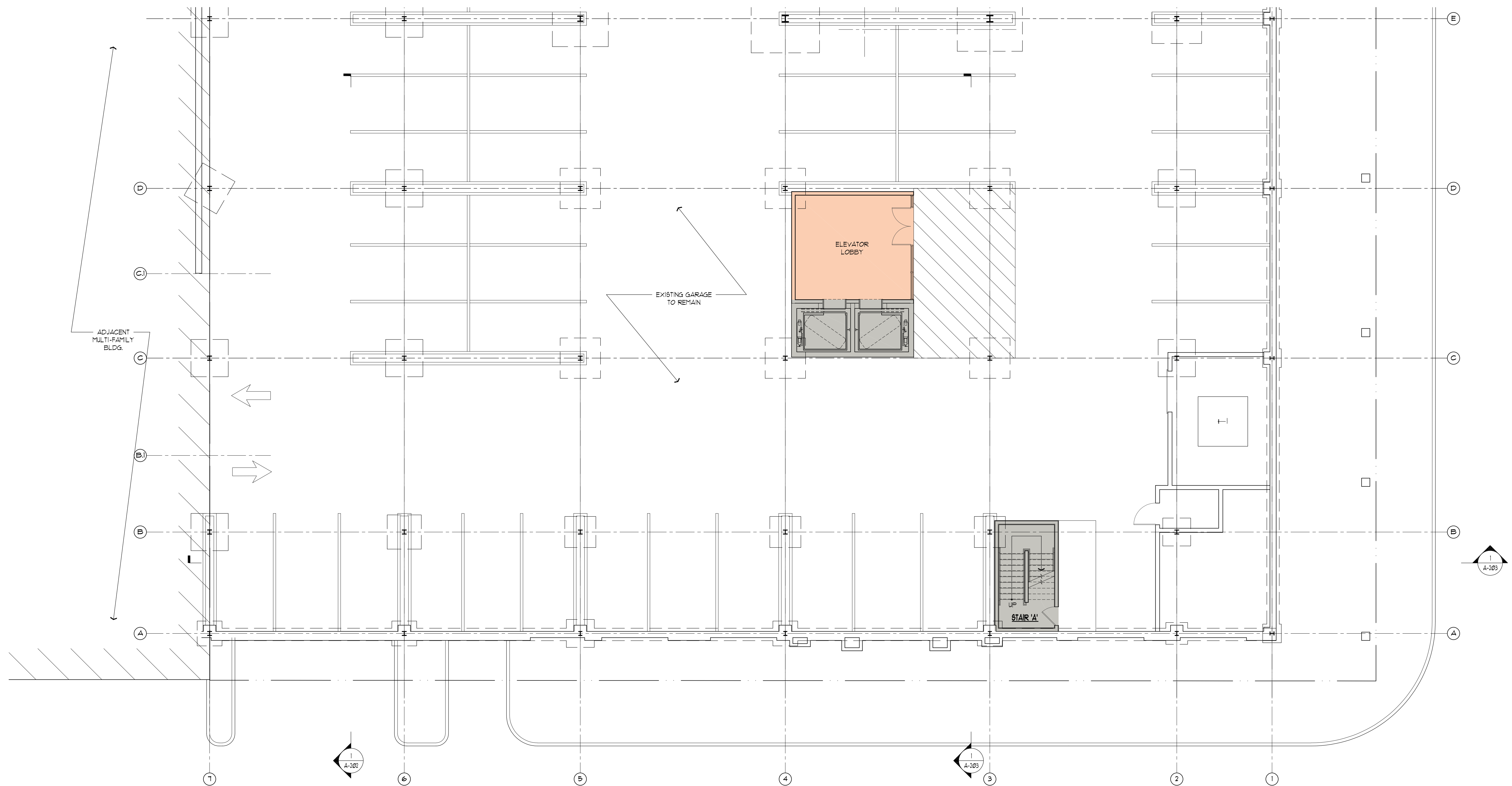
Project No.

Drawn by: MJD

Scale: NTS

T-001

APARTMENT SET



Revisions:

Drawing Title:
**APARTMENT
 GARAGE PLAN**

Project:
24 BELDEN AVENUE
 Belden Avenue & Burnell Blvd
 Norwalk, Connecticut

Consultant:

Architect:
**The SULLIVAN
 Architectural Group**
 155 N. Broad Street, Milford, Connecticut 06460
 ph: (203) 254-8680

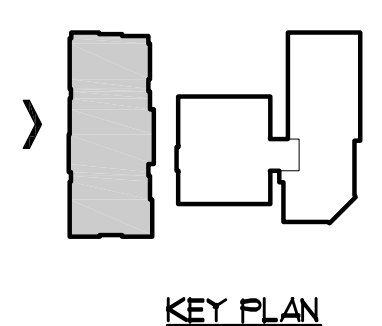


Date: 11/15/24
 Project No. 2408
 Drawn by: MJD
 Scale: 1/8"=1'-0"

A-100

APARTMENT SET

©2024 The Sullivan Architectural Group, Inc. All rights reserved. No part of this drawing may be reproduced without the written permission of The Sullivan Architectural Group, Inc.



ACCESS STREET

BELDEN AVENUE

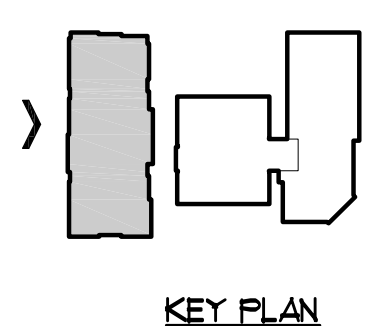
Architect:	The SULLIVAN Architectural Group 155 N. Broad Street, Milford, Connecticut 06460 ph: (203) 254-8680
Consultant:	
Project:	24 BELDEN AVENUE Belden Avenue & Burnell Blvd Norwalk, Connecticut
Drawing Title:	APARTMENT 1ST FLOOR PLAN
Revisions:	

Seal:	
Date:	11/15/24
Project No.:	2408
Drawn by:	MJD
Scale:	1/8"=1'-0"
A-101	
APARTMENT SET	

©2024 The Sullivan Architectural Group, Inc. All rights reserved. No part of this drawing may be reproduced without the written permission of The Sullivan Architectural Group, Inc.



APARTMENT UNIT TOTAL:		2ND FLOOR GROSS AREA:	13,108 G.S.F.
2ND FLOOR:	20 UNITS		
3RD FLOOR:	21 UNITS		
4TH FLOOR:	21 UNITS		
5TH FLOOR:	19 UNITS		
6TH FLOOR:	19 UNITS		
TOTAL:	100 UNITS		



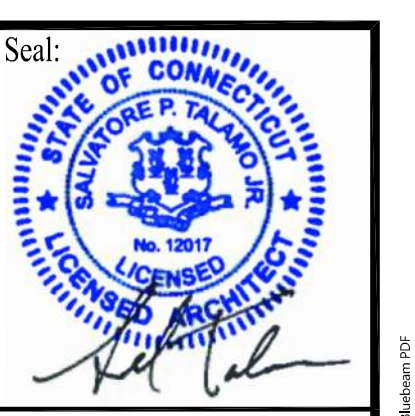
Revisions:

Drawing Title:
**APARTMENT
2ND FLOOR PLAN**

Project:
24 BELDEN AVENUE
Belden Avenue & Burnell Blvd
Norwalk, Connecticut

Consultant:

Architect:
**The SULLIVAN
Architectural Group**
155 N. Broad Street, Milford, Connecticut 06460
ph: (203) 254-8680



Date: 11/15/24
Project No. 2408
Drawn by: MJD
Scale: 1/8"=1'-0"

A-102

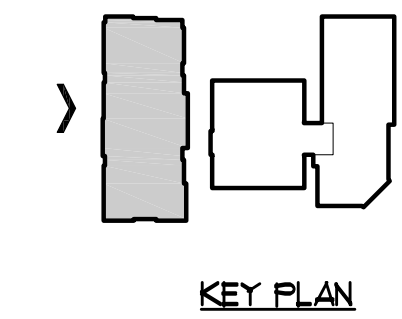
APARTMENT SET



MULTI FAMILY UNIT TOTAL: 3RD & 4TH FLOOR GROSS AREA: 13,108 G.S.F.

2ND FLOOR: 20 UNITS
 3RD FLOOR: 21 UNITS
 4TH FLOOR: 21 UNITS
 5TH FLOOR: 19 UNITS
 6TH FLOOR: 19 UNITS

TOTAL: 100 UNITS



Revisions:

Drawing Title:
**APARTMENT
 3RD & 4TH FLR PLAN**

Project:
24 BELDEN AVENUE
 Belden Avenue & Burnell Blvd
 Norwalk, Connecticut

Consultant:

The SULLIVAN
Architectural Group
 155 N. Broad Street, Milford, Connecticut 06460
 ph: (203) 254-8680

Seal:



Date: 11/15/24

Project No. 2408

Drawn by: MJD

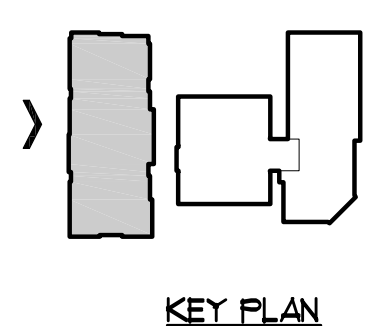
Scale: 1/8"=1'-0"

A-103

APARTMENT SET



MULTI FAMILY UNIT TOTAL:		5TH FLOOR GROSS AREA:	12,950 G.S.F.
2ND FLOOR:	20 UNITS		
3RD FLOOR:	21 UNITS		
4TH FLOOR:	21 UNITS		
5TH FLOOR:	19 UNITS		
6TH FLOOR:	19 UNITS		
TOTAL:	100 UNITS		



Revisions:

Drawing Title:
**APARTMENT
5TH FLR PLAN**

Project:
24 BELDEN AVENUE
Belden Avenue & Burnell Blvd
Norwalk, Connecticut

Consultant:
**The SULLIVAN
Architectural Group**
155 N. Broad Street, Milford, Connecticut 06460
ph: (203) 254-8680

Seal:

Date: 11/15/24

Project No. 2408

Drawn by: MJD

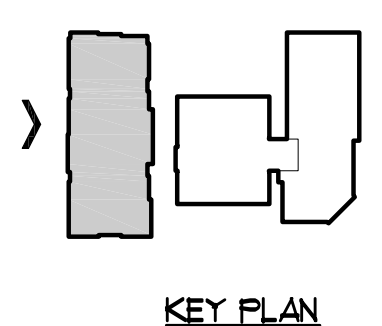
Scale: 1/8"=1'-0"

A-104

APARTMENT SET



MULTI FAMILY UNIT TOTAL:		6TH FLOOR GROSS AREA:	12,950 G.S.F.
2ND FLOOR:	20 UNITS		
3RD FLOOR:	21 UNITS		
4TH FLOOR:	21 UNITS		
5TH FLOOR:	19 UNITS		
6TH FLOOR:	19 UNITS		
TOTAL:	100 UNITS		



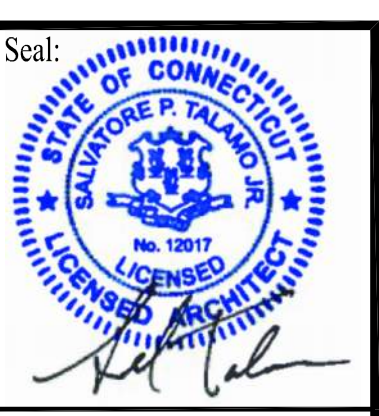
Revisions:

Drawing Title:
**APARTMENT
6TH FLR PLAN**

Project:
24 BELDEN AVENUE
Belden Avenue & Burnell Blvd
Norwalk, Connecticut

Consultant:

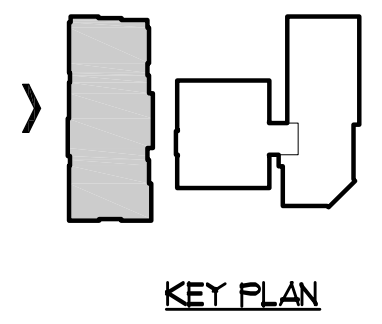
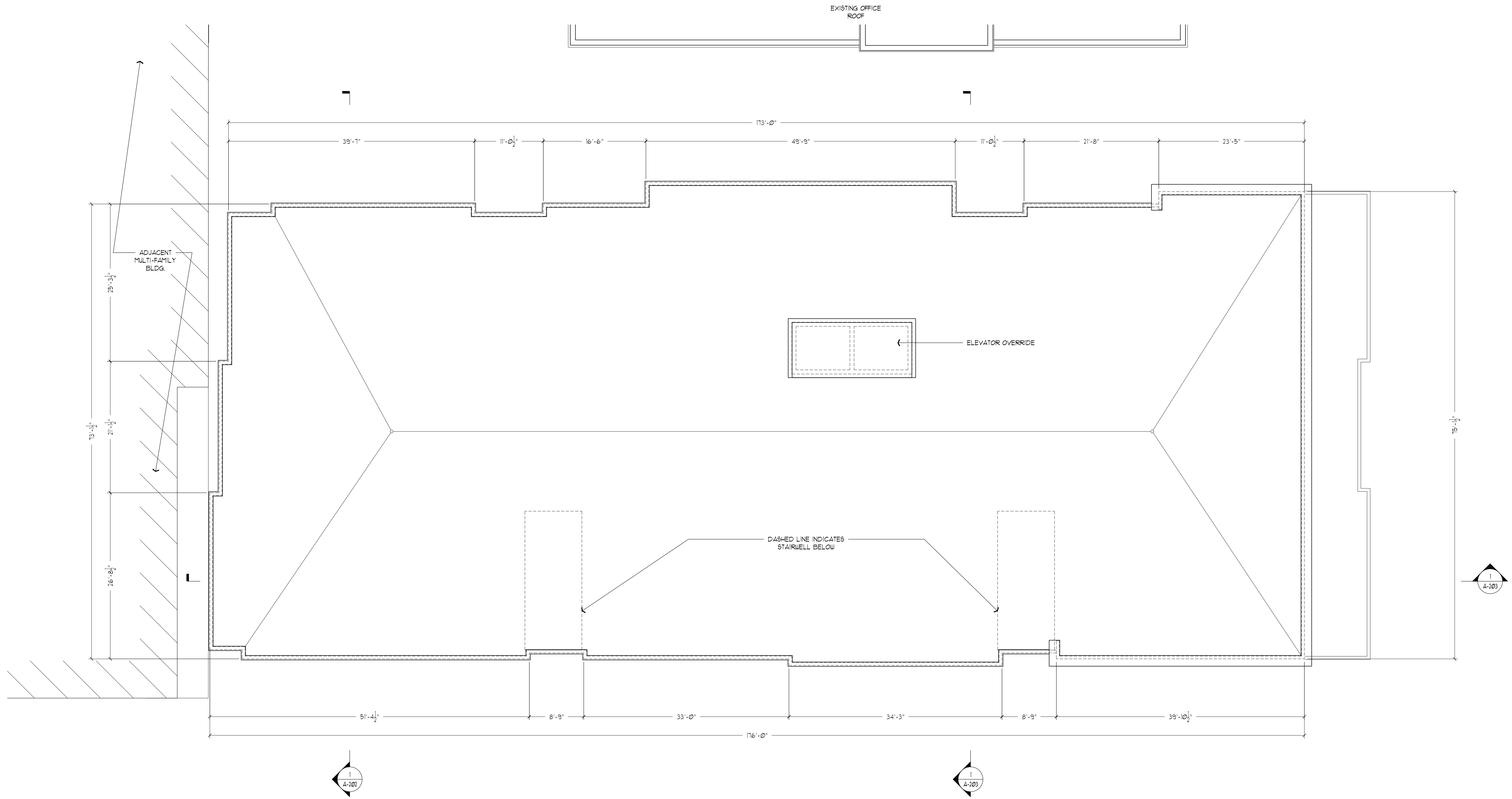
Architect:
**The SULLIVAN
Architectural Group**
155 N. Broad Street, Milford, Connecticut 06460
ph: (203) 254-8680



Date: 11/15/24
Project No. 2408
Drawn by: MJD
Scale: 1/8"=1'-0"

A-105

APARTMENT SET



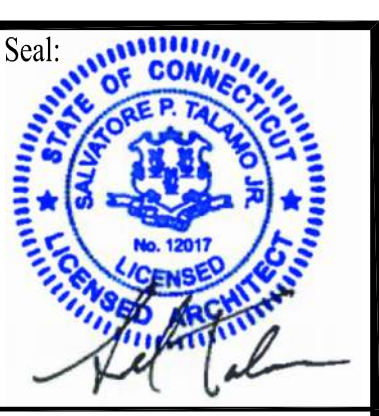
Revisions:

Drawing Title:
**APARTMENT
ROOF PLAN**

Project:
24 BELDEN AVENUE
Belden Avenue & Burnell Blvd
Norwalk, Connecticut

Consultant:

Architect:
**The SULLIVAN
Architectural Group**
155 N. Broad Street, Milford, Connecticut 06460
ph: (203) 254-8680



Date: 11/15/24

Project No. 2408

Drawn by: MJD

Scale: 1/8"=1'-0"

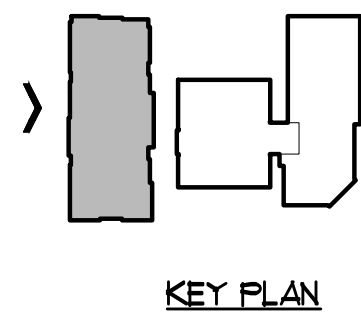
A-106

APARTMENT SET

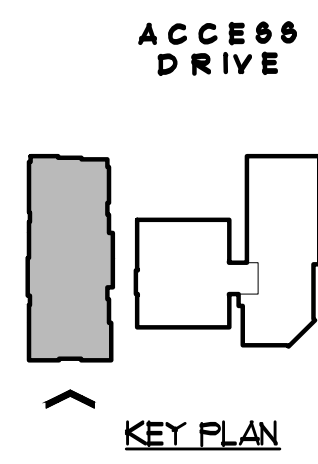
© 2024 by The Sullivan Architectural Group, Inc. All rights reserved. No part of this drawing may be reproduced without the written consent of The Sullivan Architectural Group, Inc.



1 SIDE STREET ELEVATION
SCALE: 1/8"=1'-0"



2 BELDEN AVE. ELEVATION
SCALE: 1/8"=1'-0"



BUILDING ELEVATION TYP. NOTES:

- ① - FIBER CEMENT CHANNEL SIDING
- ② - FIBER CEMENT PANEL SIDING
- ③ - BRICK VENEER
- ④ - PVC TRIM BANDING & TRIM, PTD.
- ⑤ - INSULATED VINYL WINDOWS, BLACK
- ⑥ - EXTRUDED ALUM. TRIM SYSTEM, PTD.
- ⑦ - ALUMINUM RAILING SYSTEM, BLACK
- ⑧ - STOREFRONT GLAZING IN BLACK FRAME

Revisions:

Drawing Title:
**APARTMENT
BUILDING ELEVATIONS**

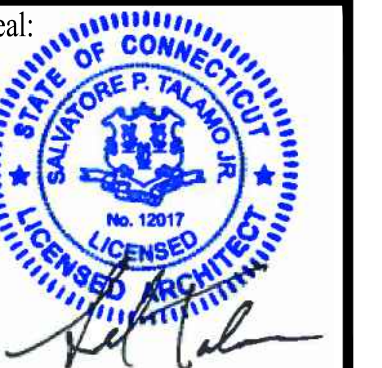
Project:
24 BELDEN AVENUE

Belden Avenue & Burnell Blvd
Norwalk, Connecticut

Consultant:

Architect:
**The SULLIVAN
Architectural Group**
155 N. Broad Street, Milford, Connecticut 06460
ph: (203) 254-8680

Seal:



Date: 11/15/24

Project No. 2408

Drawn by: MJD

Scale: 1/8"=1'-0"

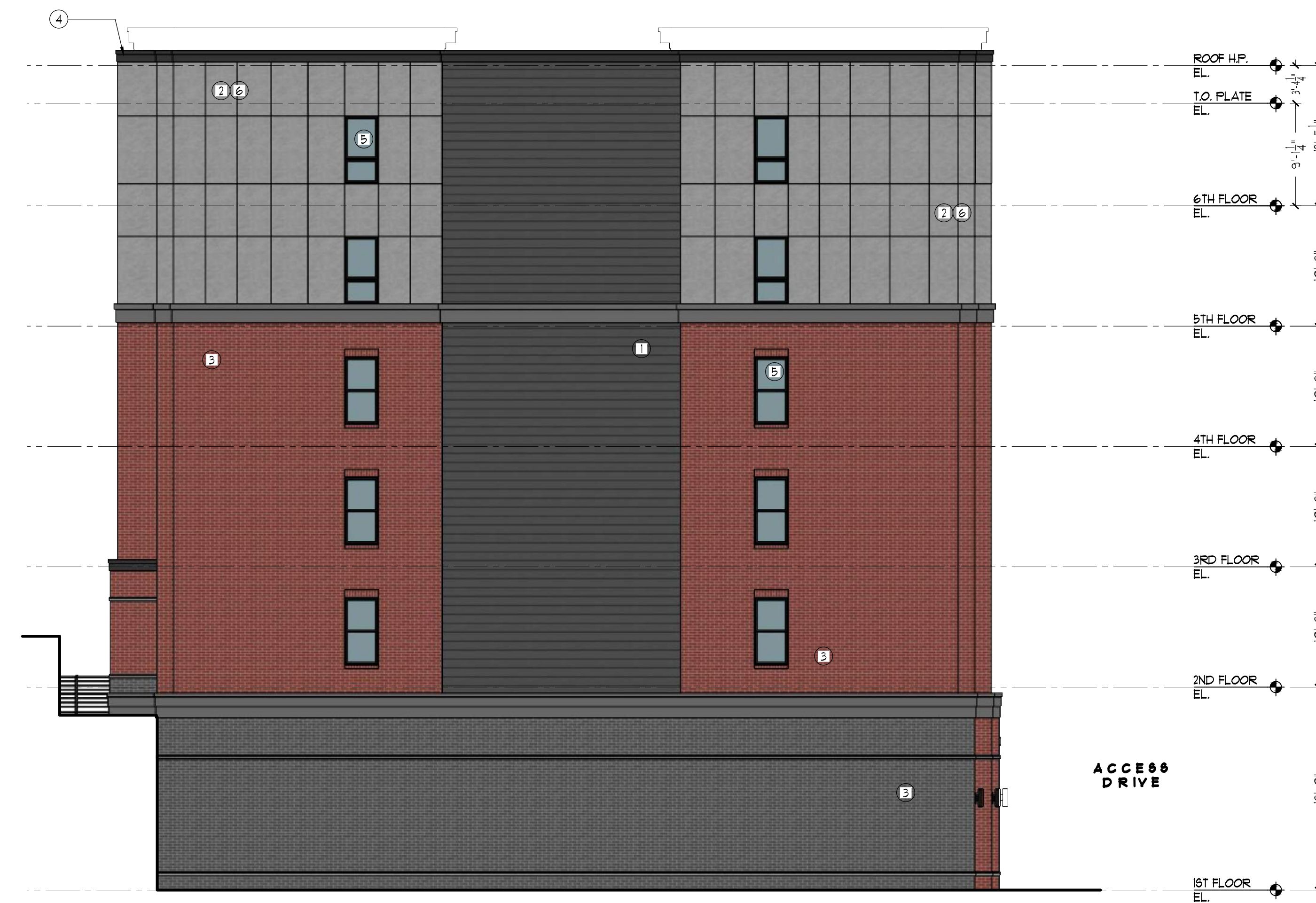
A-200

APARTMENT SET

\\sullivan\Company\Drawings\2408_24 Belden Ave\Architectural\2408_Apartment_Section and Elevations.dwg, 11/14/2024 2:22:29 PM, Jon DWG TO PDF K33



1 COURTYARD ELEVATION
SCALE: 1/8"=1'-0"



2 REAR ELEVATION
SCALE: 1/8"=1'-0"

BUILDING ELEVATION TYP. NOTES:

- ① - FIBER CEMENT CHANNEL SIDING
- ② - FIBER CEMENT PANEL SIDING
- ③ - BRICK VENEER
- ④ - PVC TRIM BANDING & TRIM, PTD.
- ⑤ - INSULATED VINYL WINDOWS, BLACK
- ⑥ - EXTRUDED ALUM. TRIM SYSTEM, PTD.
- ⑦ - ALUMINUM RAILING SYSTEM, BLACK
- ⑧ - STOREFRONT GLAZING IN BLACK FRAME

Revisions:

Drawing Title:
**APARTMENT
BUILDING ELEVATIONS**

Project:
24 BELDEN AVENUE

Belden Avenue & Burnell Blvd
Norwalk, Connecticut

Consultant:

Architect:
**The SULLIVAN
Architectural Group**
155 N. Broad Street, Milford, Connecticut 06460
ph: (203) 254-8680



Date: 11/15/24

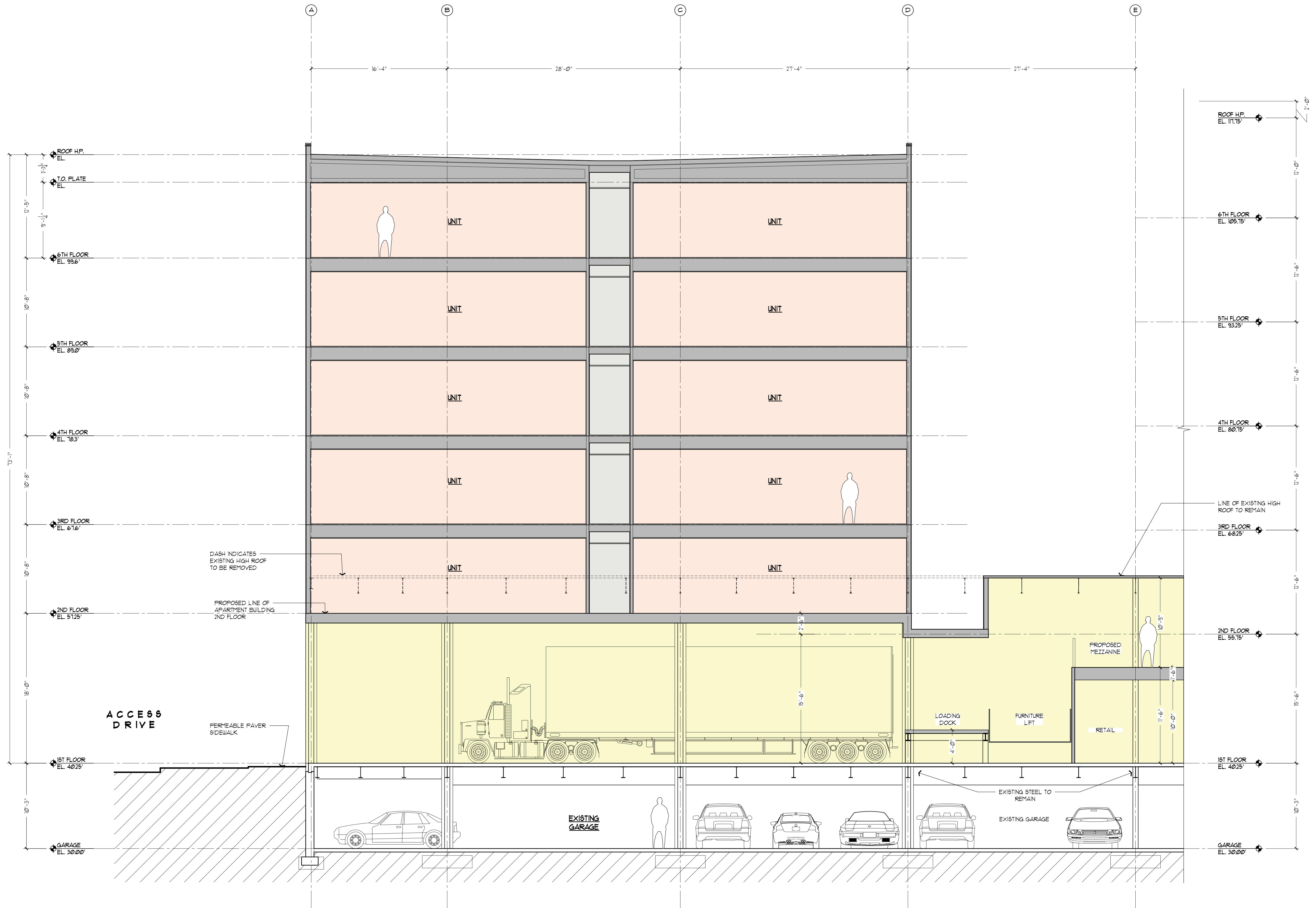
Project No. 2408

Drawn by: MJD

Scale: 1/8"=1'-0"

A-201

APARTMENT SET



1 BUILDING SECTION
SCALE: 3/16"=1'-0"

Revisions:

Drawing Title:
APARTMENT BUILDING SECTION

Project:
24 BELDEN AVENUE
Belden Avenue & Burnell Blvd
Norwalk, Connecticut

Consultant:
The SULLIVAN Architectural Group
155 N. Broad Street, Milford, Connecticut 06460
ph: (203) 254-8680

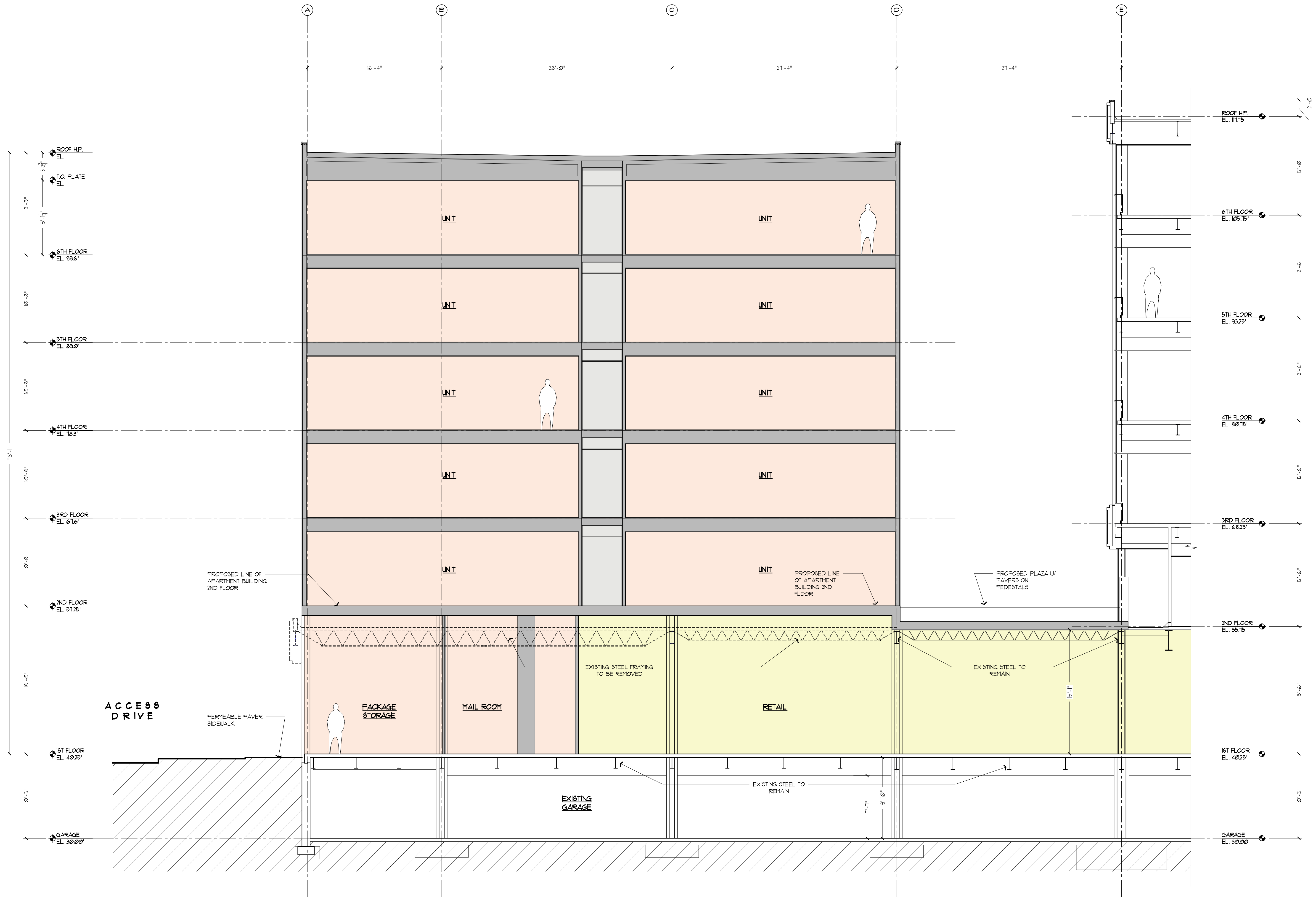
Architect:
The SULLIVAN Architectural Group
155 N. Broad Street, Milford, Connecticut 06460
ph: (203) 254-8680

Seal:
STATE OF CONNECTICUT
JAMES P. TALKINGTON
No. 11817
LICENSED ARCHITECT

Date: 11/15/24
Project No. 2408
Drawn by: MJD
Scale: 3/16"=1'-0"

A-202

APARTMENT SET



1 BUILDING SECTION
SCALE: 3/16"=1'-0"

Revisions:

Drawing Title:
APARTMENT BUILDING SECTION

Project:
24 BELDEN AVENUE
Belden Avenue & Burnell Blvd
Norwalk, Connecticut

Consultant:

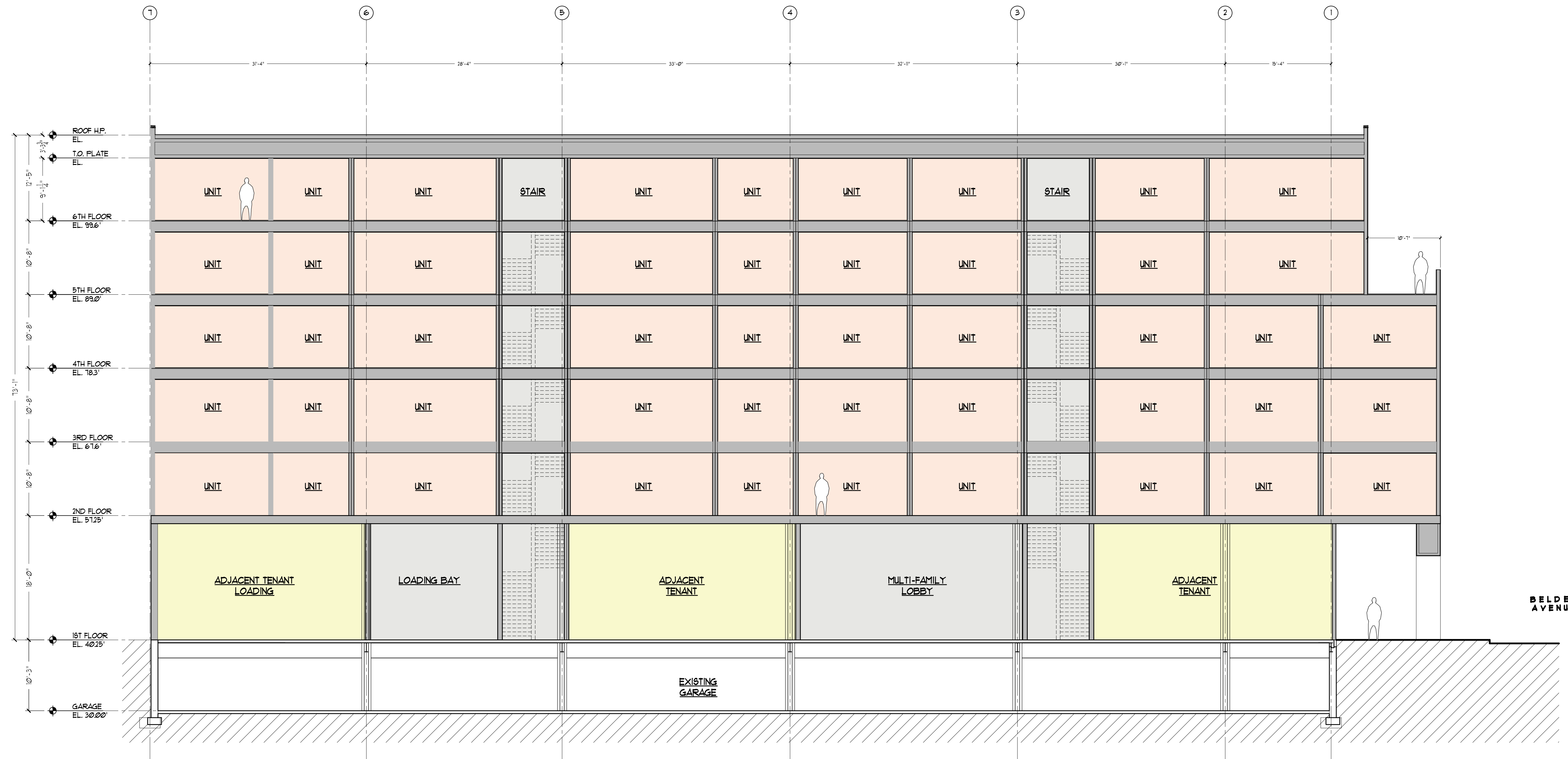
Architect:
The SULLIVAN Architectural Group
155 N. Broad Street, Milford, Connecticut 06460
ph: (203) 254-8680



Date: 11/15/24
Project No. 2408
Drawn by: MJD
Scale: 3/16"=1'-0"

A-203

APARTMENT SET



1 BUILDING SECTION
SCALE: 3/16"=1'-0"

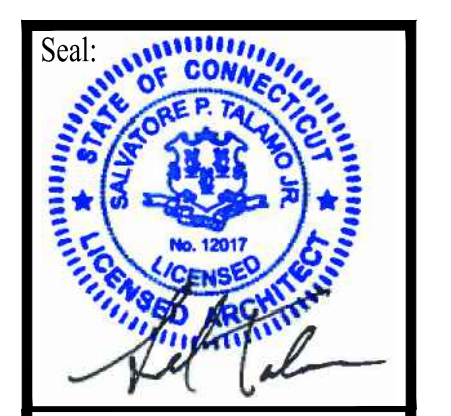
Revisions:

Drawing Title:
APARTMENT
BUILDING SECTION

Project:
24 BELDEN AVENUE
Belden Avenue & Burnell Blvd
Norwalk, Connecticut

Consultant:

Architect:
The SULLIVAN Architectural Group
155 N. Broad Street, Milford, Connecticut 06460
ph: (203) 254-8680

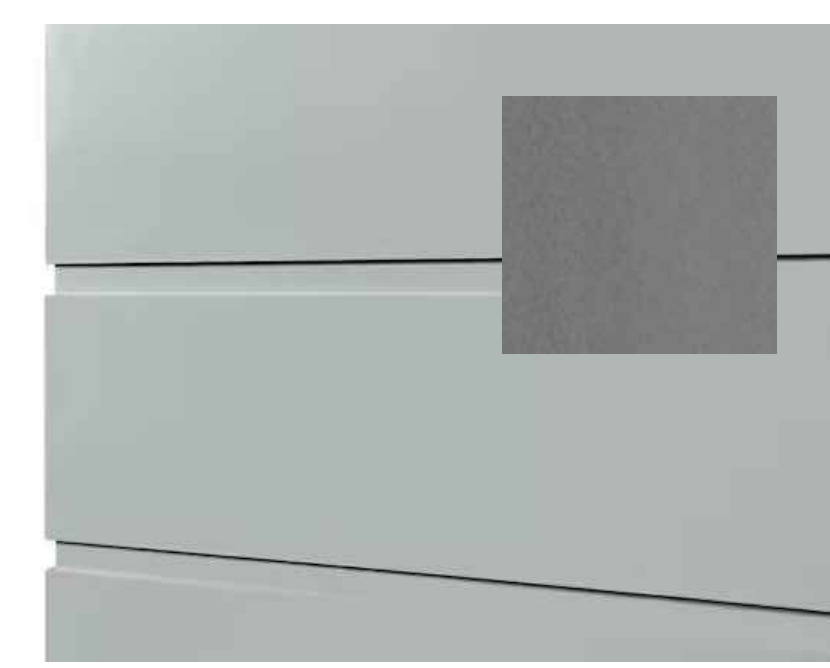
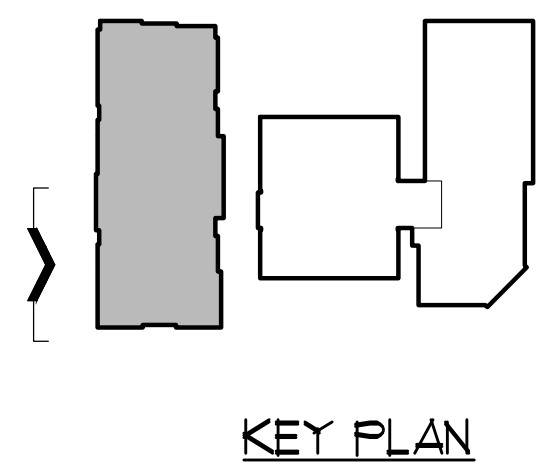


Date: 11/15/24
Project No. 2408
Drawn by: MJD
Scale: 1/8"=1'-0"

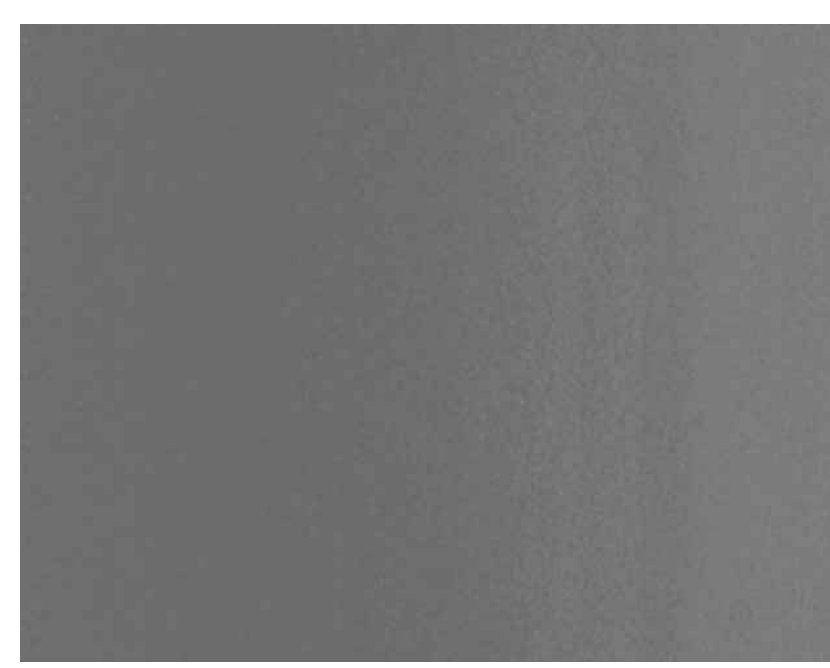
A-204

APARTMENT SET

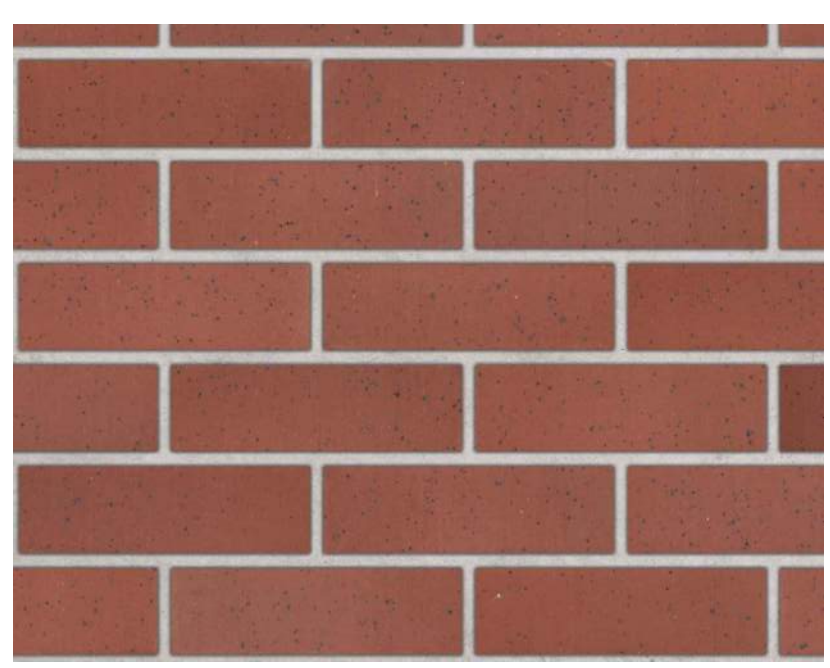
\\sullivan\c\comps\Drawings\2408\24 Belden Ave\Architectural\2408_Apartment_Section_and_Elevation.dwg, 11/14/2024 2:28:08 PM, User: DWG TO PDF K33



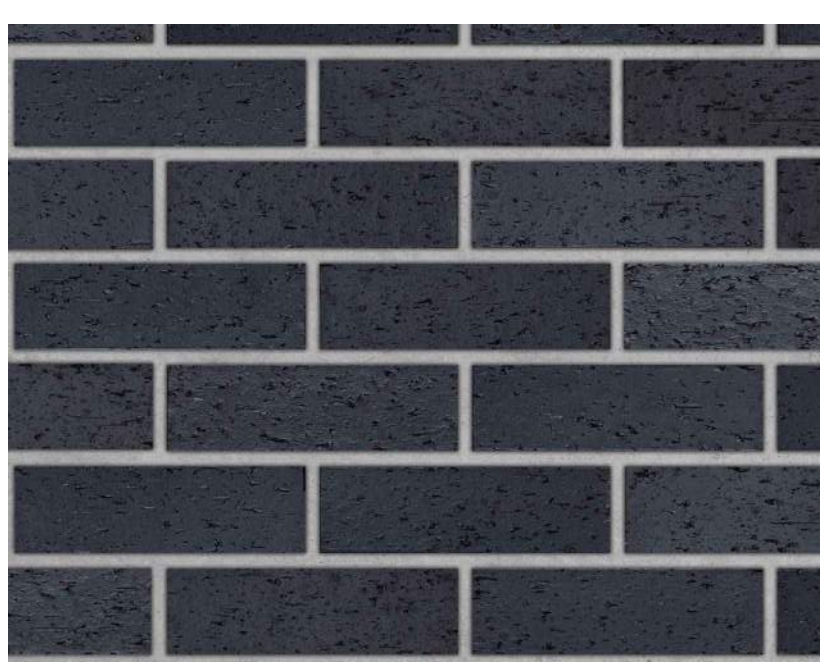
① JAMES HARDIE CHANNEL SIDING
ARTISAN SQUARE CHANNEL
'GRAY SLATE'



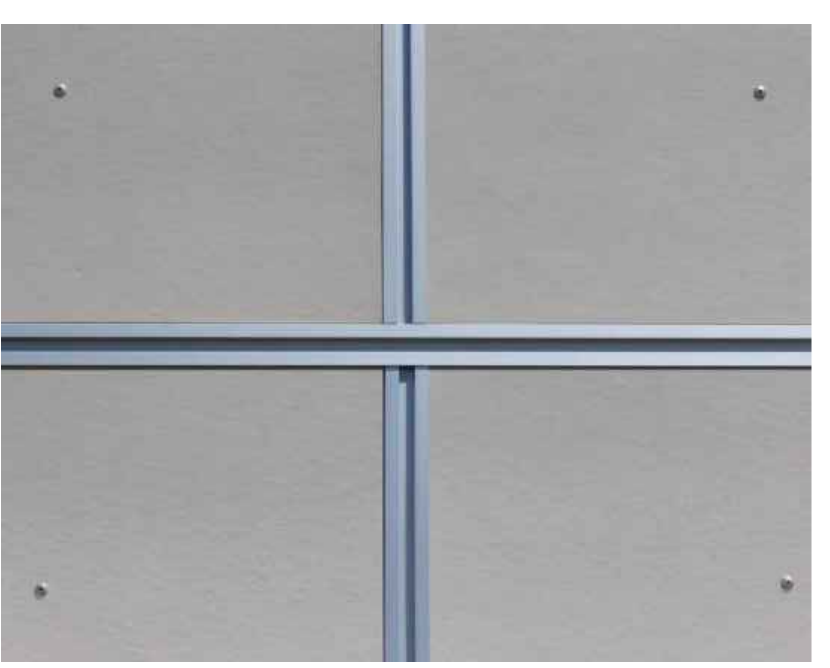
② JAMES HARDIE VERTICAL PANEL
'GRAY SLATE'



③A ENDICOTT THIN BRICK
RED IRONSPOT SMOOTH



③B ENDICOTT THIN BRICK
MANGANESE IRONSPOT VELOUR



⑥ EASY TRIM EXTRUDED ALUM.

Revisions:

Drawing Title: **APARTMENT ENLARGED ELEVATION**

Project: **24 BELDEN AVENUE**
Belden Avenue & Burnell Blvd
Norwalk, Connecticut

Consultant:

Architect: **The SULLIVAN Architectural Group**
155 N. Broad Street, Milford, Connecticut 06460
ph: (203) 254-8680

Seal:

Date: 11/15/24

Project No. 2408

Drawn by: JHS

Scale: 1/8"=1'-0"

A-210

APARTMENT SET