



**COLDWELL
BANKER
COMMERCIAL**
AI GROUP

FOR LEASE

CBCWORLDWIDE.COM

THE PARKVIEW TOWN CENTER

275 S US Highway 17-92
Debary, FL 32713



OFFICE

Gabriel Garrido, CCIM
386 775 8633
gabriel@cbcaigroup.com

©2022 Coldwell Banker. All Rights Reserved. Coldwell Banker and the Coldwell Banker Commercial logos are trademarks of Coldwell Banker Real Estate LLC. The Coldwell Banker® System is comprised of company owned offices which are owned by a subsidiary of Realogy Brokerage Group LLC and franchised offices which are independently owned and operated. The Coldwell Banker System fully supports the principles of the Equal Opportunity Act.

COLDWELL BANKER COMMERCIAL
AI GROUP
1019 Town Center Drive, Orange City, FL 32763
386.775.8633



THE PARKVIEW TOWN CENTER

275 S US Highway 17-92, Debarry, FL 32713



LOCATION OVERVIEW

The Parkview Building is located on the high traffic count Hwy 17-92 in the growing city of Debarry. Quick access to the I-4 interstate and within minutes from the cities of Orange City, Deltona and Deland. There is a bus stop on site and the building is in close proximity to the Sun Rail Station which provides easy commuting from the larger metro to the south.

AVAILABLE SPACES

SPACE	LEASE RATE	SIZE (SF)
275 S US Highway 17-92	\$22.00 SF/yr	1,225 SF
275 S US Highway 17-92	\$20.00 SF/yr	619 SF
275 S us HWY 1972	\$20.00 SF/yr	1,225 SF

CBCWORLDWIDE.COM

Gabriel Garrido, CCIM
386 775 8633
gabriel@cbcaigroup.com

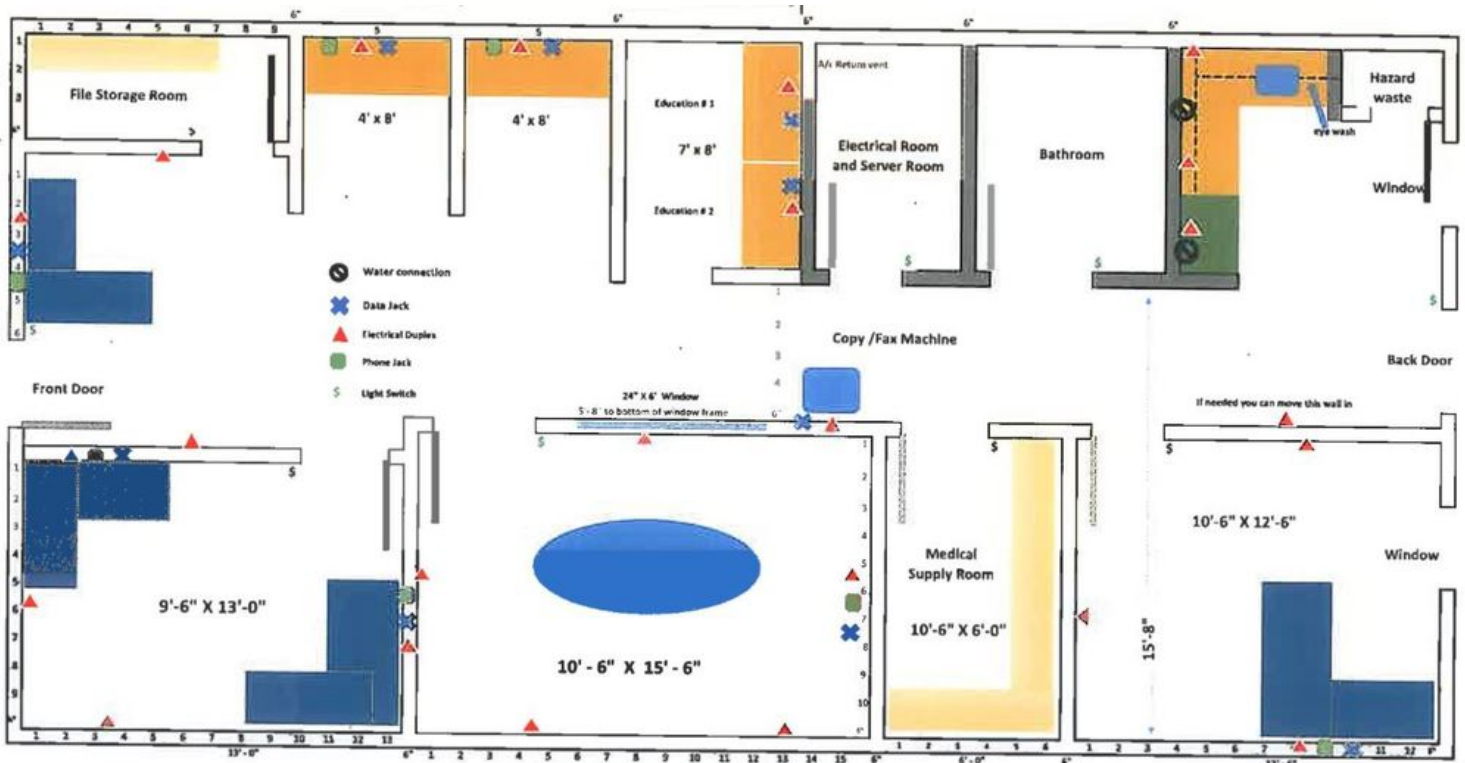




THE PARKVIEW TOWN CENTER

275 South Richard Charles Bealle Blvd, Debarry, FL 32713
Suite 102

LEASE



CBCWORLDWIDE.COM

Gabriel Garrido, CCIM
386 775 8633
gabriel@cbcaigroup.com





THE PARKVIEW TOWN CENTER

275 S US Highway 17-92, Debarry, FL 32713

LEASE



CBCWORLDWIDE.COM

Gabriel Garrido, CCIM
386 775 8633
gabriel@cbcaigroup.com

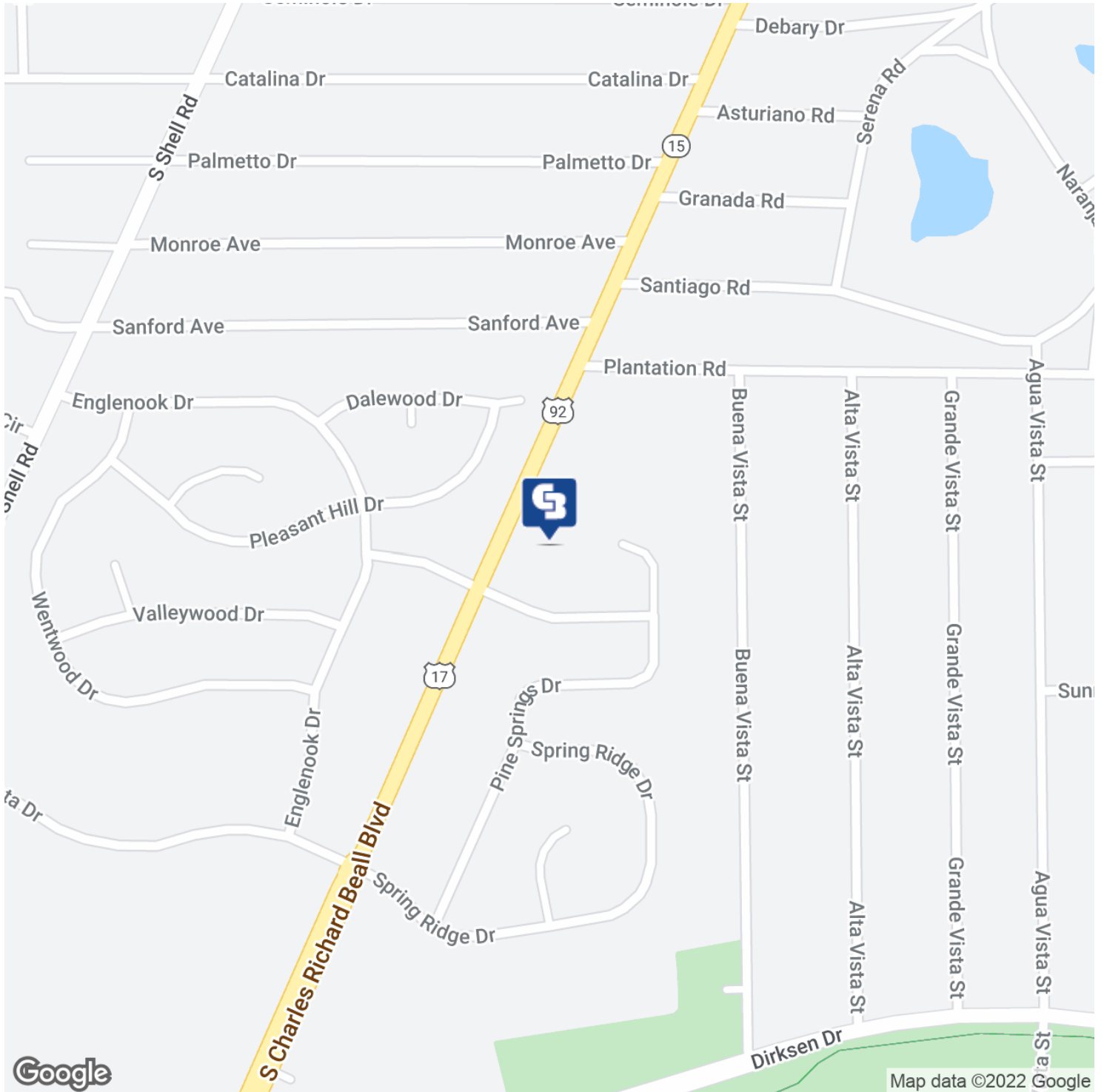
 **COLDWELL
BANKER
COMMERCIAL**
AI GROUP



THE PARKVIEW TOWN CENTER

275 S US Highway 17-92, Debarry, FL 32713

LEASE



CBCWORLDWIDE.COM

Gabriel Garrido, CCIM
386 775 8633
gabriel@cbaigroup.com

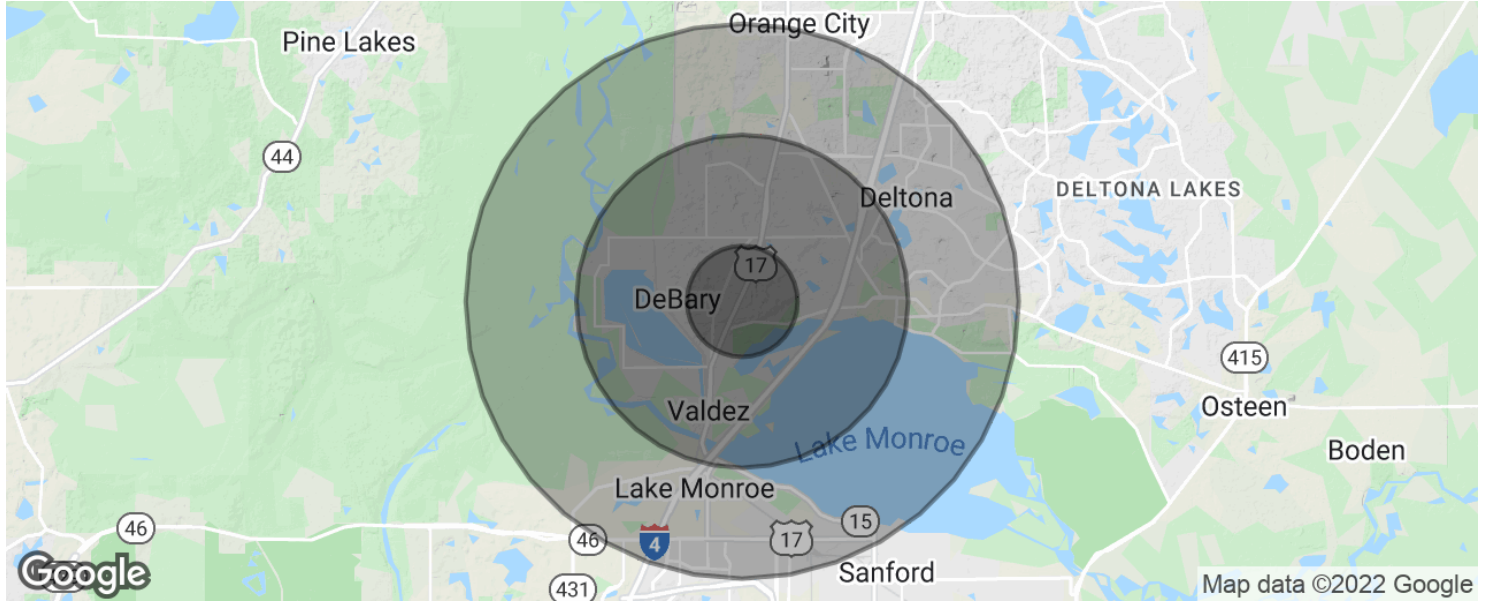


**COLDWELL
BANKER
COMMERCIAL**
AI GROUP



THE PARKVIEW TOWN CENTER

275 S US Highway 17-92, DeBary, FL 32713



POPULATION	1 MILE	3 MILES	5 MILES
Total population	2,893	25,647	75,020
Median age	42.4	44.9	40.0
Median age (Male)	40.7	43.8	39.2
Median age (Female)	44.2	45.9	40.8
HOUSEHOLDS & INCOME	1 MILE	3 MILES	5 MILES
Total households	1,145	10,435	29,866
# of persons per HH	2.5	2.5	2.5
Average HH income	\$71,035	\$68,856	\$61,059
Average house value		\$264,854	\$206,807

* Demographic data derived from 2010 US Census

CBCWORLDWIDE.COM

Gabriel Garrido, CCIM
386 775 8633
gabriel@cbcaigroup.com

