



FOR
LEASE



CITE PARTNERS

1767 BENBOW COURT

APOPKA, FL | 2,500± SF OFFICE AVAILABLE

PROPERTY SPECIFICATIONS

THE SPACE

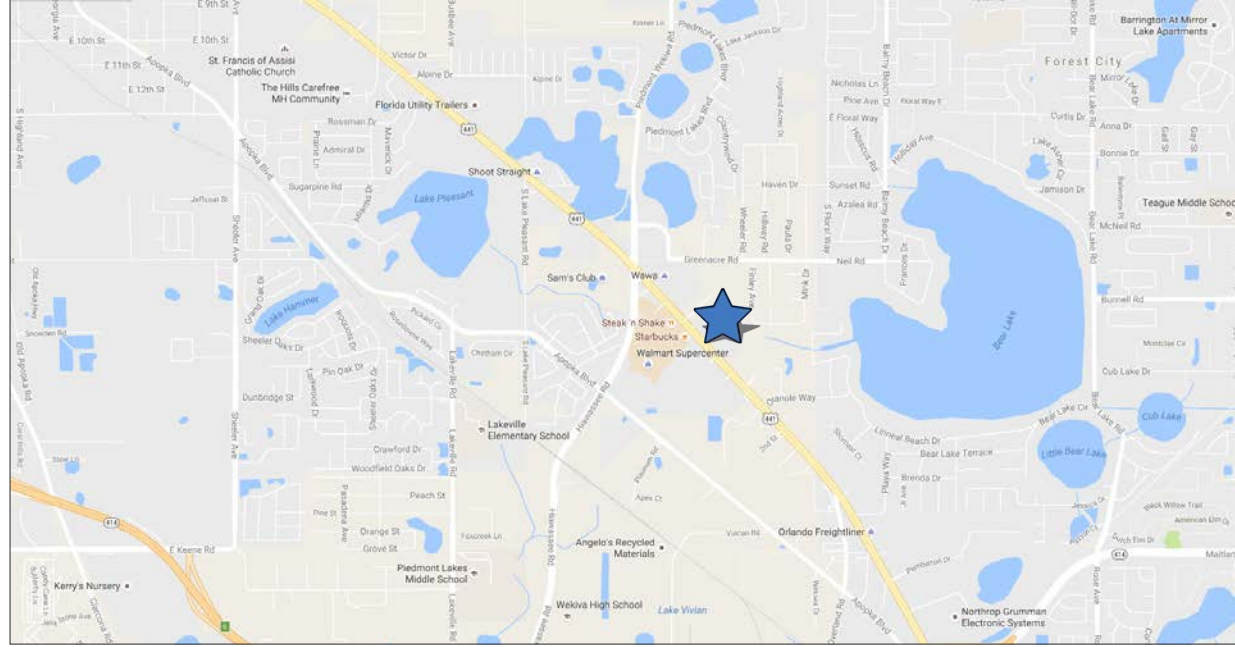
- 2,500± SF of office space available
- 2nd Floor office space with dedicated ground floor entrance
- 11 offices, large open area and storage space
- Flexible floor plan can be modified for a specific use
- Signage opportunities above suite entrance

THE PROPERTY

- Total Building: 30,282 SF
- Building Type: Multi-tenant flex office/warehouse building
- Parking: Ample
- Zoning: I-1, City of Apopka

THE PRICE

- \$13.00/SF NNN



JAMIE BARATI, SIOR, CCIM
Managing Director, Principal
jamie.barati@citepartners.com
407.930.1803

JOHN WORRELL, CCIM
Associate Director
john.worrell@citepartners.com
407.930.1809

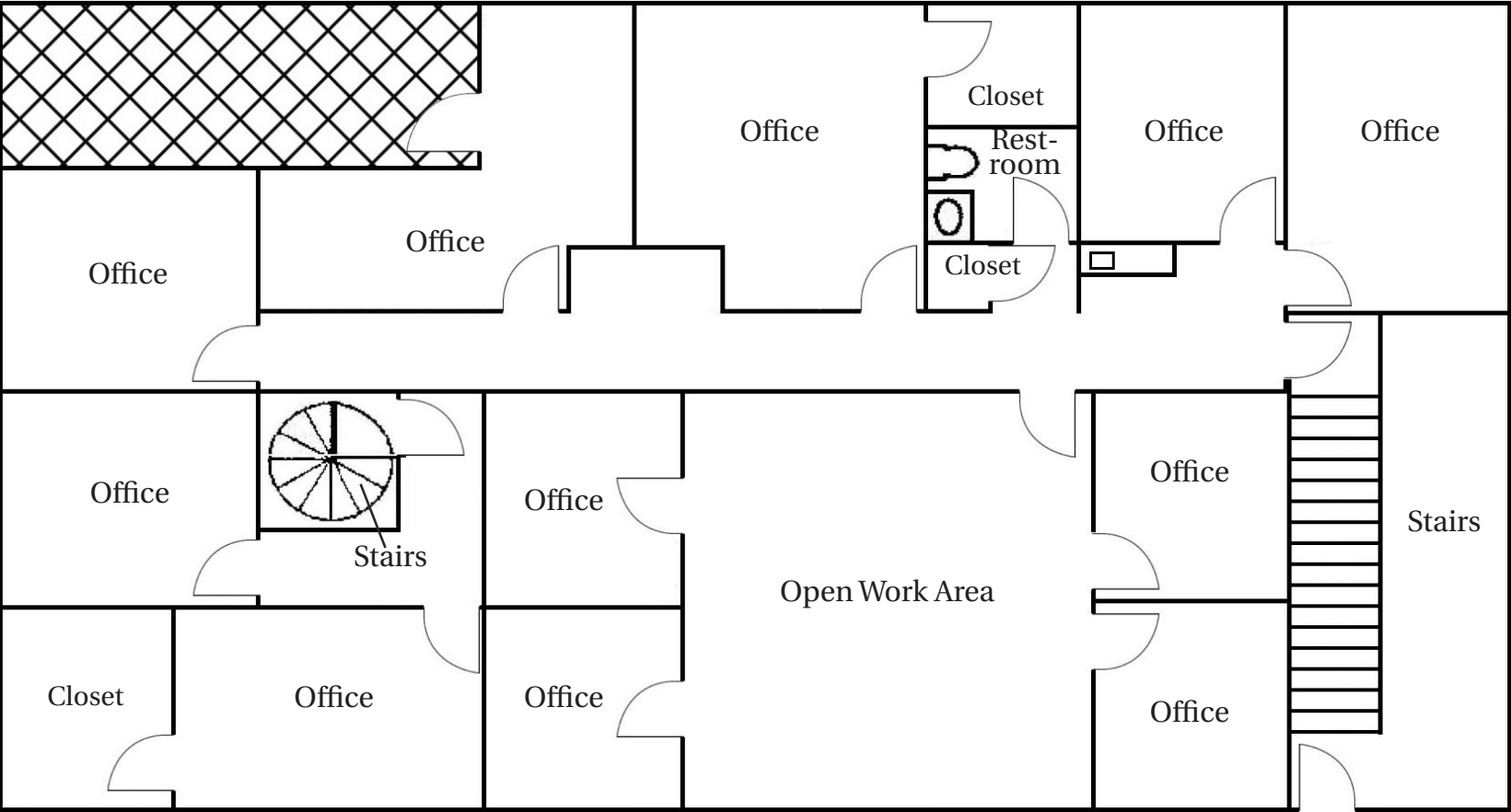
KATHERINE ZELMAN
Associate
katherine.zelman@citepartners.com
407.930.1807

CITE PARTNERS
100 South Orange Ave., Suite 500
Orlando, FL 32801
www.citepartners.com

Disclaimer:

This document has been prepared by Cite Partners for advertising and general information only. Cite Partners makes no guarantees, representations or warranties of any kind, expressed or implied, regarding the information including, but not limited to, warranties of content, accuracy and reliability. Any interested party should undertake their own inquiries as to the accuracy of the information. Cite Partners excludes unequivocally all inferred or implied terms, conditions and warranties arising out of this document and excludes all liability for loss and damages arising therefrom. This publication is the copyrighted property of Cite Partners and/or its licensor(s). All rights reserved.

FLOOR PLAN - 2,500± RSF



Front Entrance

