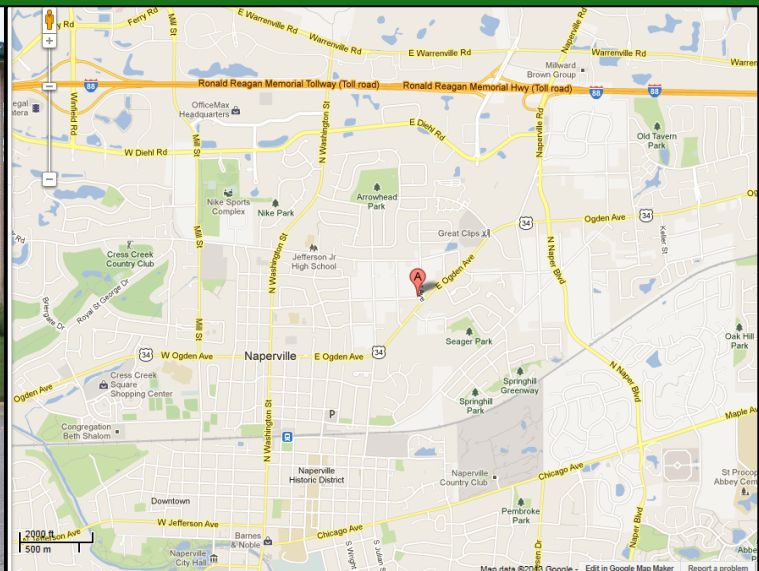


**FOR LEASE
OFFICE SPACE- SECOND FLOOR
2,000 SQUARE FEET**

**Robert A. DeSalvo, Jr.
Sierra Realty Services, Inc.
Phone: 630-428-4992
Email: rdesalvo@sierrarealtyinc.com**



LOCATION	1001 E. Ogden Avenue, Suite 202, Naperville, Illinois
AVAILABLE	2,000 Square Feet
BUILDING SIZE	7,800 Square Feet (2 floors)
PERCENT OF BUILDING	26% (2,000/7,800)
CONFIGURATION	1 @ 14' x 16' Corner office + /- 2 @ 14' x 8' Offices 1 @ 14' x 14' Conference room 1 @ 6' x 8' Kitchen 1 @ 14' x 15' Reception area
ASKING RATE	\$17.00 Net per square foot
C.A.M.	\$4.98 per sq. ft. (actual 2016)
REAL ESTAE TAXES	\$2.69 per sq. ft. (2016)
OCCUPANCY	Upon lease execution
COMMENTS	North Naperville location. Convenient access to I-88. Quality image, vaulted ceilings, operating windows, handicap lift accessible, 4 to 1 parking, wired for voice/data, Ogden Avenue frontage and building signage. 45,000 cars per day pass this building. The Broker has ownership in this building.

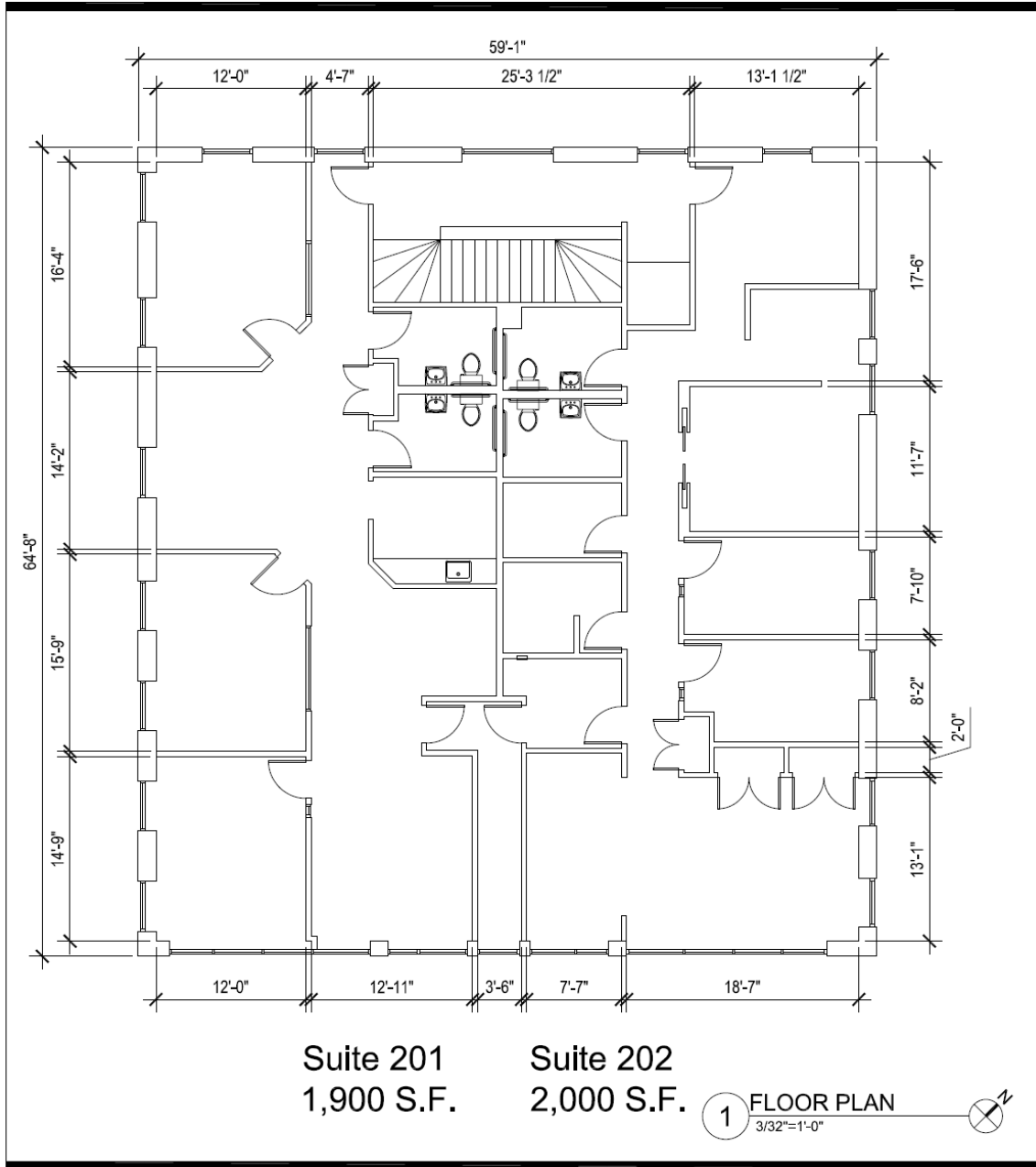


1001 E. Ogden Avenue, Suite 201
Naperville, IL 60563
Phone: 630-428-4992
Fax: 630-428-4997

The information contained in this literature has been received from secondary sources. No representation is made to the accuracy or completeness. Properties are subject to prior sale, withdrawal and other sales or rental conditions. Terms are subject to errors, omissions and change without notice.

**FOR LEASE
OFFICE SPACE- SECOND FLOOR
2,000 SQUARE FEET**

Robert A. DeSalvo, Jr.
Sierra Realty Services, Inc.
Phone: 630-428-4992
Email: rdesalvo@sierrarealtyinc.com



Sierra Realty Services, Inc.

BROKERAGE
 MANAGEMENT
 DEVELOPMENT
 CONSTRUCTION SERVICES

1001 E. Ogden Avenue, Suite 201
 Naperville, IL 60563
 Phone: 630-428-4992
 Fax: 630-428-4997

The information contained in this literature has been received from secondary sources. No representation is made to the accuracy or completeness. Properties are subject to prior sale, withdrawal and other sales or rental conditions. Terms are subject to errors, omissions and change without notice.