

18728 - 18740 ECORSE ROAD
ALLEN PARK, MICHIGAN



**SIGNATURE
ASSOCIATES**
KNOW SIGNATURE | KNOW RESULTS

RETAIL FOR LEASE
1,200 Square Feet Available



PROPERTY FEATURES

- 1,200 square feet available
- Former dog groomer
- Located near I-94 and Southfield Freeway
- Densely populated, well-traveled commercial area in Allen Park
- End-cap unit available with 24 shared parking spaces
- Lease Rate: \$14.00/sq. ft. NNN & Utilities



For more information, please contact:

JUSTIN GAFFREY
(248) 799 3143
jgaffrey@signatureassociates.com

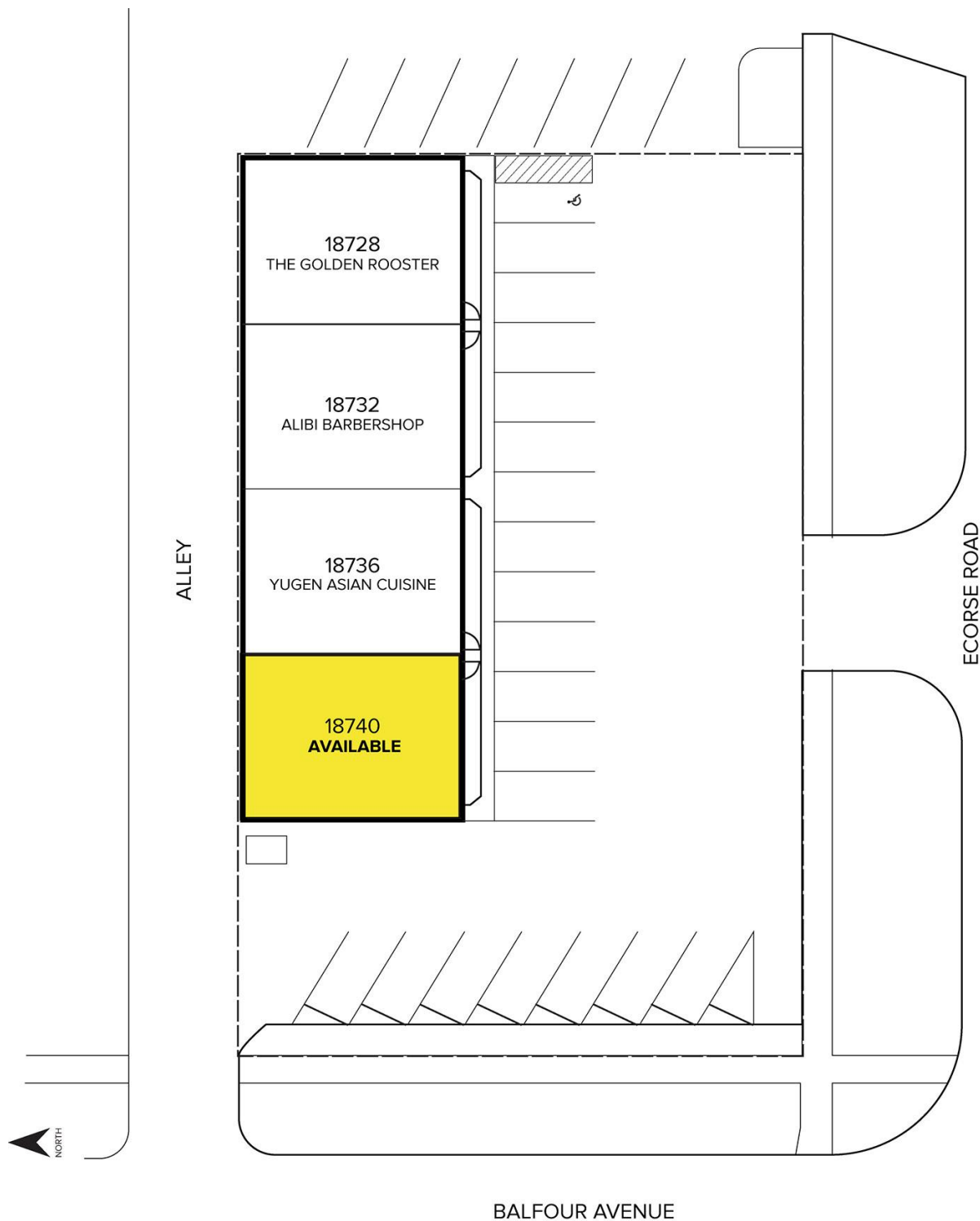
SIGNATURE ASSOCIATES
One Towne Square, Suite 1200
Southfield, MI 48076
www.signatureassociates.com

18728-18740 Ecorse Road – Allen Park, Michigan

Retail For Lease

1,200
Square Feet
AVAILABLE

Site Plan



For more information, please contact:

JUSTIN GAFFREY

(248) 799 3143

jgaffrey@signatureassociates.com

SIGNATURE ASSOCIATES

One Towne Square, Suite 1200

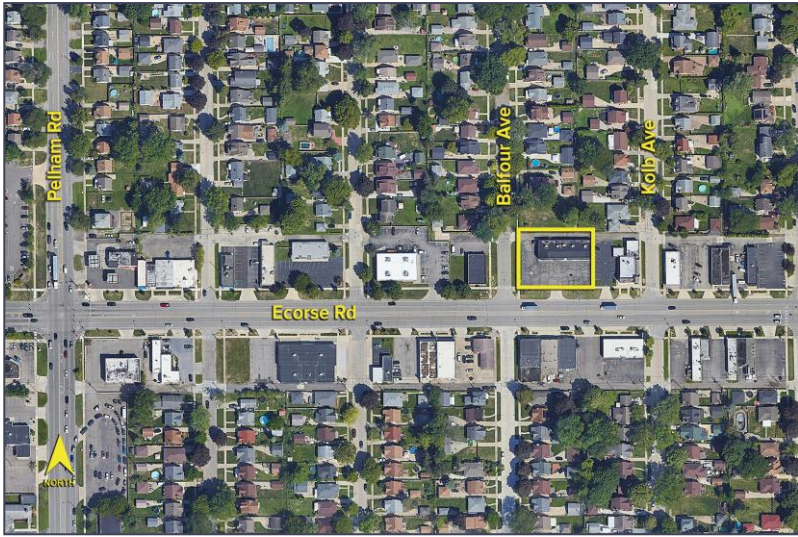
Southfield, MI 48076

www.signatureassociates.com

18728-18740 Ecorse Road – Allen Park, Michigan

Retail For Lease

1,200
Square Feet
AVAILABLE

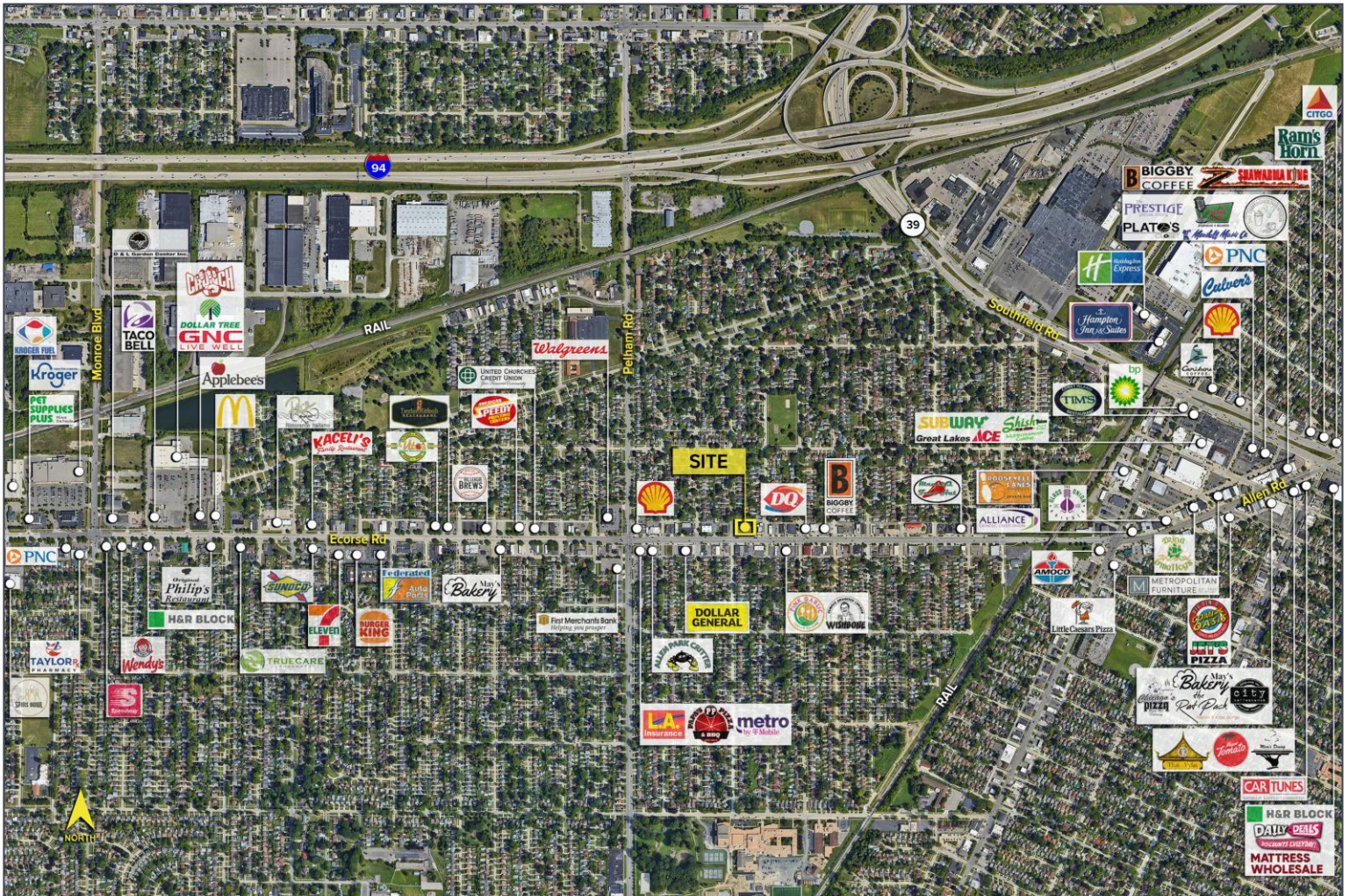


DEMOGRAPHICS

	POPULATION	MED. HH INCOME
1 MILE	13,670	\$79,959
3 MILE	124,152	\$69,057
5 MILE	280,514	\$67,535

TRAFFIC COUNTS (TWO-WAY)

15,961	Ecorse Rd. E of Pelham Rd.
17,408	Ecorse Rd. W of Pelham Rd.
23,969	Pelham Rd. S of Ecorse Rd.
24,075	Pelham Rd. N of Ecorse Rd.



For more information, please contact:
JUSTIN GAFFREY
 (248) 799 3143
 jgaffrey@signatureassociates.com

SIGNATURE ASSOCIATES
 One Towne Square, Suite 1200
 Southfield, MI 48076
 www.signatureassociates.com

Information is subject to verification and no liability for errors or omissions is assumed. Price is subject to change and listing withdrawal.