



AIRPORT TRADE CENTER | 1,530 RSF OFFICE

Office Furnishing and Ample Parking Available

ADDRESS:

550 Paiea St.
Honolulu, HI 96819
(corner of Nimitz & Paiea)

SPACE AVAILABLE:

Suite U-10 - 1,530 RSF

PARKING:

4 stalls / 1,000 SF
(Current rate: \$105/stall/Mo.)

BASE RENT: Negotiable

OPER. EXPENSE (2018):

\$1.156/RSF/Mo.
Electricity separately sub-metered

AVAILABLE: October 1st



- **MODULAR OFFICE FURNITURE & FILE CABINETS AVAILABLE!***
- One Private Office + Large Conference Room + Open Area
- **Class A** Industrial Mixed-Use project adjacent to Honolulu International Airport
- **IMX-1 zoning** (Industrial Mixed Use)
- **GREAT AMENITIES** with Starbucks, Jamba Juice, Big Kahuna Pizza, L n L Drive Inn, Blimpies, Ninja Sushi, Hawaii USA Federal Credit Union...etc.
- **LOTS OF TENANT AND CUSTOMER PARKING.** First 2 hour customer parking is free with validation.

EXCLUSIVE AGENT:

Kevin Y. Nishikawa

Realtor, CCIM

S.V.P. Commercial Division

Phone: 808-203-6971

Fax: 808-839-1007

Email: kevin@marcusrealty.com

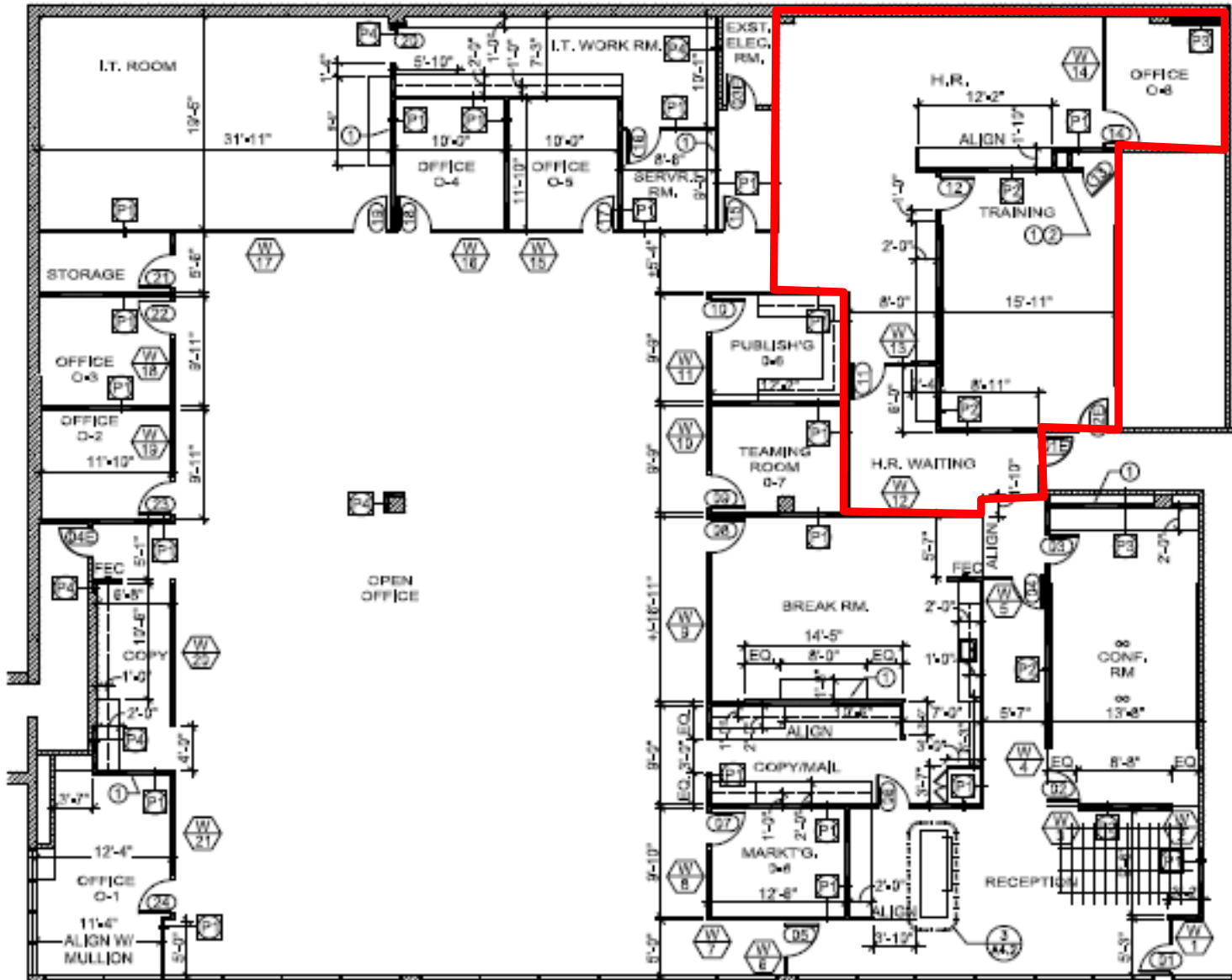
RB-17304

Marcus & Associates, Inc. | 1045 Mapunapuna Street, Honolulu, HI 96819 | (808)839-7446 main | www.MarcusRealty.com

Information herein deemed reliable but not guaranteed



AIRPORT TRADE CENTER | 1,530 RSF OFFICE



Kevin Y. Nishikawa

Realtor, CCIM

S.V.P. Commercial Division

Phone: 808-203-6971

Fax: 808-833-6259

Email: kevinn@marcusrealty.com

RB-17304

**MARCUS &
ASSOCIATES, INC.**

1045 MAPUNAPUNA STREET
HONOLULU, HI 96819

WWW.MARCUSREALTY.COM



AIRPORT TRADE CENTER | 1,530 RSF OFFICE

