

2826 OLD LEE HWY

Fairfax, VA 22031

Office For Lease

600 - 4,275 SF



Leasing Information:
703.522.4600

Jack Redmond
703.284.5880
jredmond@lpc.com

Correll Caulfield
703.284.5886
ccaufield@lpc.com

Eamon McCrann
703.284.5861
emccrann@lpc.com

Neil Alt
703.284.5868
nalt@lpc.com

Lincoln

Lincoln Property Company
1530 Wilson Boulevard Suite 200
Arlington, VA 22209

www.lpc.com

2826 OLD LEE HWY

Fairfax, VA 22031

Office For Lease



Property Highlights

- Move-in Ready Medical suites with recently performed improvements
- Less than a mile from Mosaic District
- Building signage available
- Unbeatable accessibility from all major thoroughfares including Rt 66, Rt 29, Rt 50 and I495
- WAMATA 2B Bus Stops directly in front of Property
- Ample surface parking and drop off accessibility for patients
- Tenant Only Garage Parking Available
- 2 Miles to INOVA Fairfax Medical Campus

Availabilities

SF

Date Available

| | | |
|-----------|------------------|-------------|
| Suite 200 | 600 SF | Immediately |
| Suite 250 | 3,032 SF | Immediately |
| Suite 300 | 1,987 - 4,275 SF | Immediately |
| Suite 306 | 2,965 SF | Immediately |
| Suite 330 | 2,289 - 4,275 SF | Immediately |

Jack Redmond

703.284.5880
jredmond@lpc.com

Correll Caulfield

703.284.5886
ccaufield@lpc.com

Eamon McCrann

703.284.5861
emccrann@lpc.com

Neil Alt

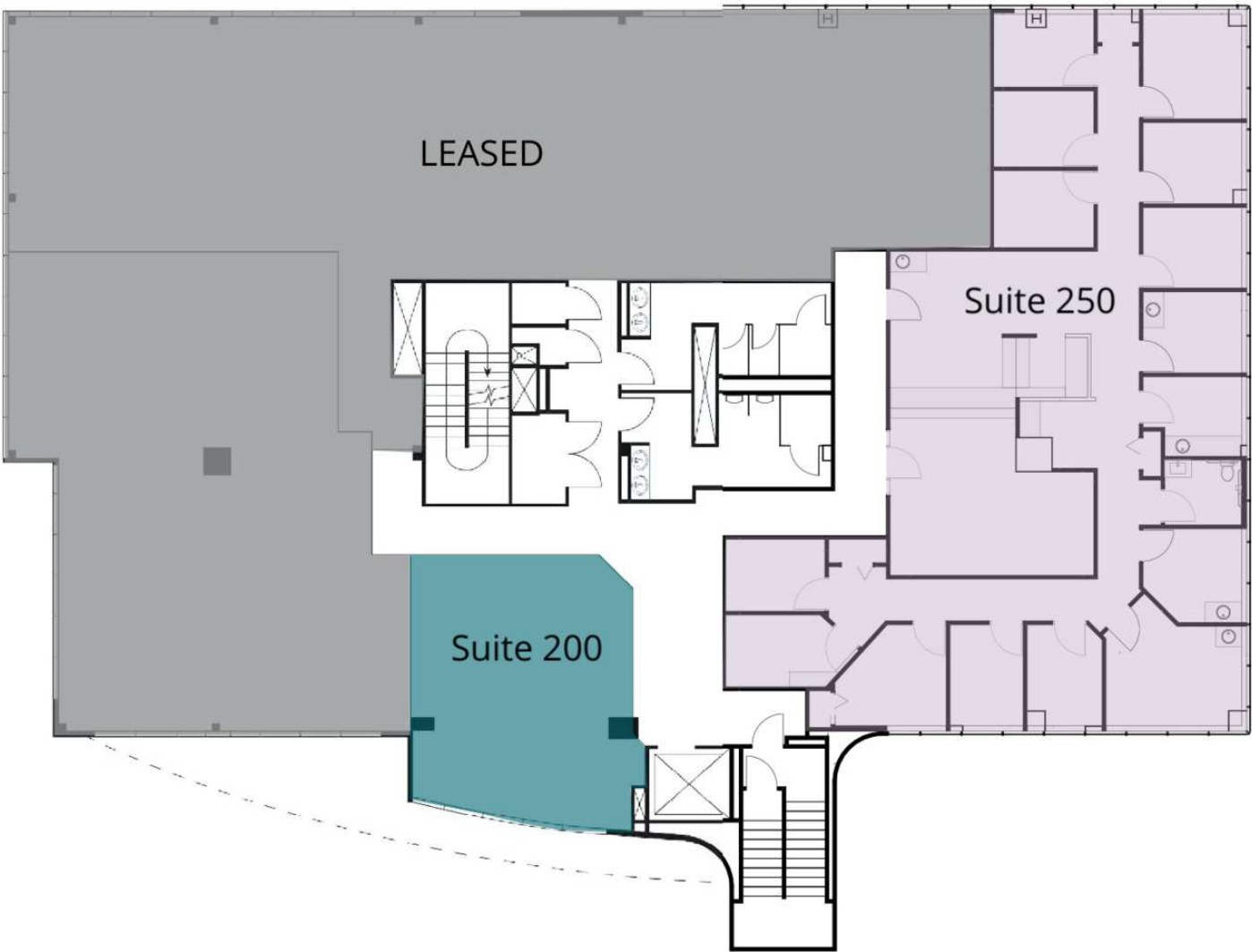
703.284.5868
nalt@lpc.com

Lincoln

2826 OLD LEE HWY

Fairfax, VA 22031

2nd Floor



| Suite | Size | Description |
|-------------|----------|------------------------|
| ■ Suite 200 | 600 SF | Available Immediately. |
| ■ Suite 250 | 3,032 SF | Available Immediately. |

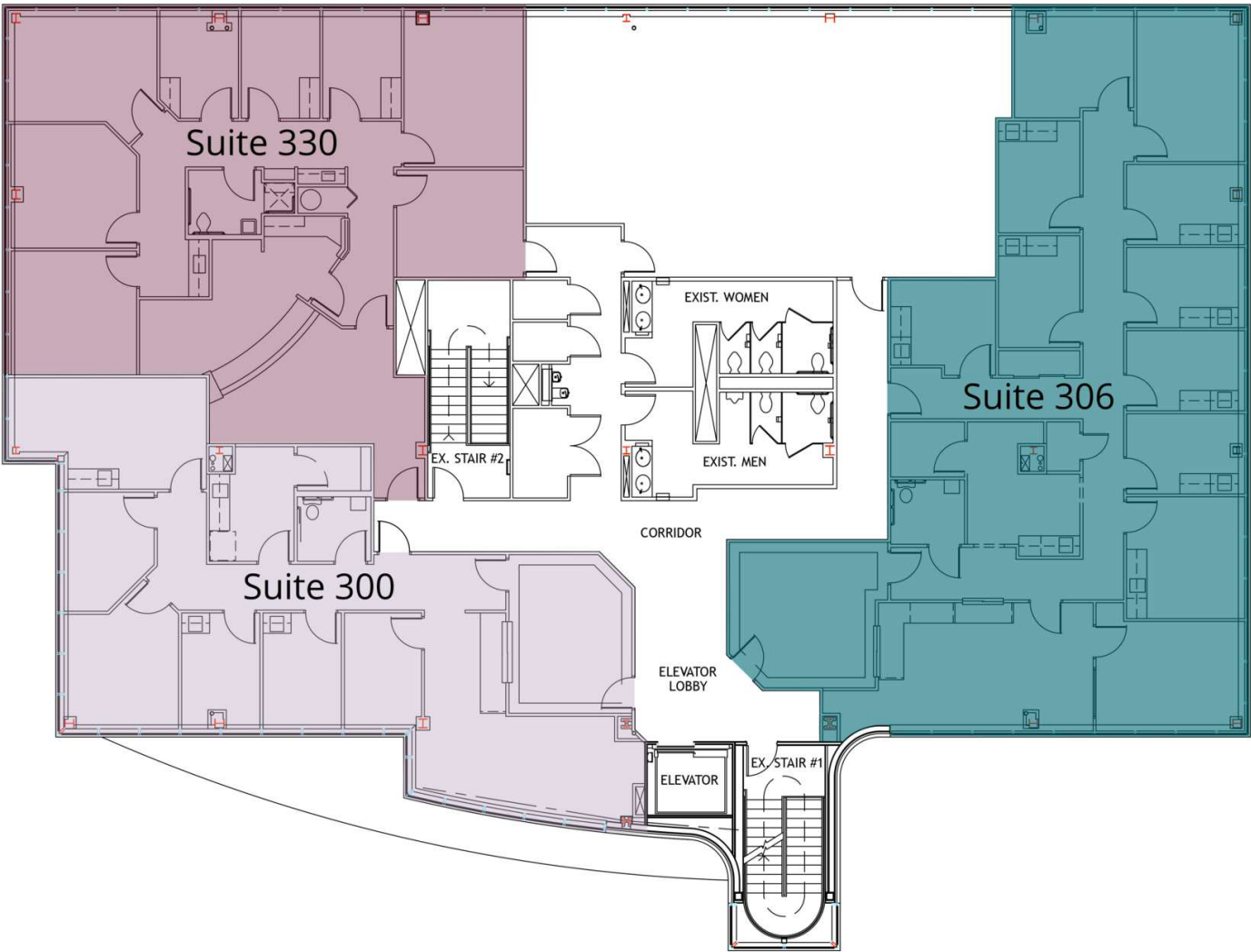
Jack Redmond
703.284.5880
jredmond@lpc.com

Correll Caulfield
703.284.5886
ccaufield@lpc.com

Eamon McCrann
703.284.5861
emccrann@lpc.com

Neil Alt
703.284.5868
nalt@lpc.com

Lincoln



| Suite | Size | Lease Rate | Description |
|-----------------------|------------------|------------|------------------------|
| <div></div> Suite 300 | 1,987 - 4,275 SF | Negotiable | Available Immediately. |
| <div></div> Suite 306 | 2,965 SF | Negotiable | Available Immediately. |
| <div></div> Suite 330 | 2,289 - 4,275 SF | Negotiable | Available Immediately. |

Jack Redmond

703.284.5880

jredmond@lpc.com

Correll Caulfield

703.284.5886

ccaufield@lpc.com

Eamon McCrann

703.284.5861

emccrann@lpc.com

Neil Alt

703.284.5868

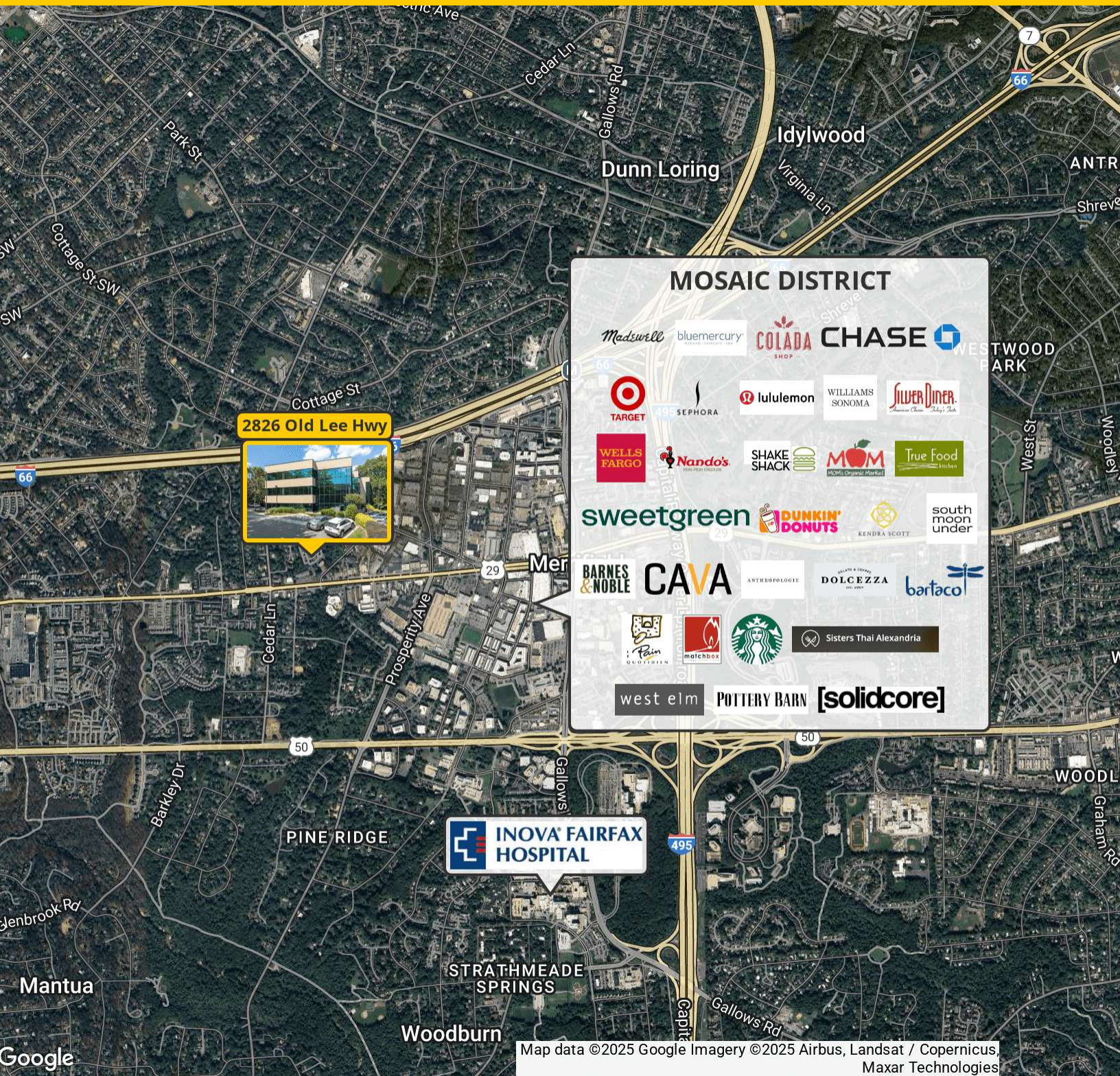
nalt@lpc.com

Lincoln

2826 OLD LEE HWY

Location Map

Fairfax, VA 22031



MOSAIC DISTRICT

- Madewell
- bluemercury
- COLADA SHOP
- CHASE
- WESTWOOD PARK
- TARGET
- SEPHORA
- lululemon
- WILLIAMS SONOMA
- SILVER DINNER
- WELLS FARGO
- Nando's
- SHAKE SHACK
- True Food Kitchen
- sweetgreen
- DUNKIN' DONUTS
- KENDRA SCOTT
- south moon under
- BARNES & NOBLE
- CAVA
- ANTHROPLOGIE
- DOLCEZZA
- bartaco
- Starbucks
- Sisters Thai Alexandria
- west elm
- POTTERY BARN
- [solidcore]

| | | | |
|------------------|-------------------|------------------|--------------|
| Jack Redmond | Correll Caulfield | Eamon McCrann | Neil Alt |
| 703.284.5880 | 703.284.5886 | 703.284.5861 | 703.284.5868 |
| jredmond@lpc.com | ccaufield@lpc.com | emccrann@lpc.com | nalt@lpc.com |

Lincoln



2826 OLD LEE HWY

Fairfax, VA 22031

Leasing Information:
703.522.4600

Jack Redmond
703.284.5880
jredmond@lpc.com

Correll Caulfield
703.284.5886
ccaufield@lpc.com

Eamon McCrann
703.284.5861
emccrann@lpc.com

Neil Alt
703.284.5868
nalt@lpc.com

Lincoln

Lincoln Property Company
1530 Wilson Boulevard Suite 200
Arlington, VA 22209

www.lpc.com