

# FOR LEASE

FENCED YARD

# Warehouse/Shop

214 Everett Street | Richmond, VA 23224



COMMONWEALTH  
COMMERCIAL  
Comprehensive Property Solutions



## PROPERTY HIGHLIGHTS

- › 4,264 - 7,054± SF warehouse/shop with 0.5 - 1.0± AC fenced yard
- › **New** 3,000± SF pre-engineered metal building containing 500± SF office and existing 1,264± SF shop
- › Three 12' x 14' drive-in doors
- › 16' - 20' clear ceiling height
- › **Q4 2025 EXPANSION**
  - 217 Maury Street can be combined with Everett Street property
    - 2,790± SF office/shop with 0.5 AC yard
    - Two 12' x 14' drive-in doors
- › Located directly off I-95 Maury Street exit
- › Zoned B-7 (grandfathered outdoor storage)
- › Rental Rate: Please call agent for pricing information

## FOR MORE INFORMATION:

### BEN BRUNI, SIOR

Senior Vice President | Partner

804-793-0046

bbruni@commonwealthcommercial.com

Commonwealth Commercial Partners, LLC represents the Landlord of this property. Information contained herein is deemed reliable but is not guaranteed.





**NEW 3,000± SF PRE-ENGINEERED METAL BUILDING WITH 500± SF OFFICE**



**12' X 14' DRIVE IN DOORS**

## Q4 2025 EXPANSION

217 Maury Street can be combined with Everett Street property



**0.5± AC  
FENCED YARD**

**Q4 2025  
EXPANSION**

### EXPANSION

- 2,790± SF office/shop with 0.5 AC yard
- Two 12' x 14' drive-in doors

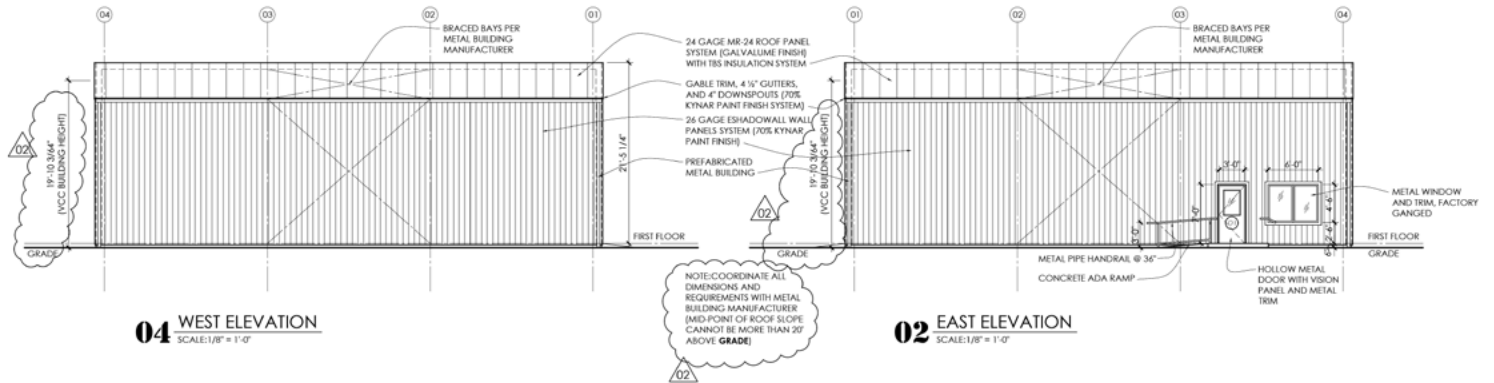
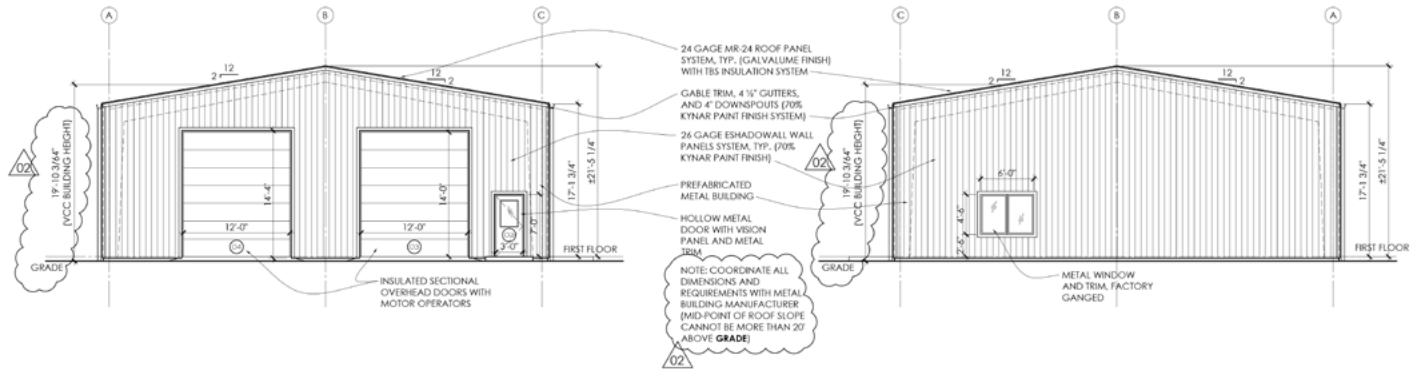
FOR LEASE | 214 EVERETT STREET | RICHMOND, VA 23224



**COMMONWEALTH  
COMMERCIAL**  
Comprehensive Property Solutions



# BUILDING ELEVATIONS



FOR LEASE | 214 EVERETT STREET | RICHMOND, VA 23224

# FLOOR PLAN

