

ENTIRE OFFICE BUILDING AVAILABLE FOR LEASE or SALE

METRO SQUARE | 1611 Duke Street - Alexandria, Virginia

PROPERTY INFORMATION

- Attractive colonial architecture; built in 1985
- RBA 7,705 SF plus 6 garage parking spaces
- Typical floor size is 2,300 SF
- Entire 4-story building includes garage level w/ storage
- Windowed offices throughout
- Large conference room & kitchenette
- Fully sprinklered
- Elevator + 2 stairwells per floor
- 4 restrooms; 1 w/ shower

Attractive courtyard setting

Parking: 6 garage spaces & 6 assigned surface spaces

AMENITIES

- Duke Street frontage with great visibility to Capital Beltway and Old Town, Alexandria
- 2 blocks to King St. Metro Station & Virginia Railway Express
- Walking distance to numerous hotels, restaurants, retail, and prestigious neighbors including the US Patent & Trademark office and the US District Courthouse
- 3.9 miles from Ronald Reagan Washington National Airport
- Convenient to public parking



FOR LEASING / SALE OPPORTUNITIES CONTACT:

Craig Burton • Office: 301.795.14556

CBurton@PromarkPartners.com

451 Hungerford Drive, Suite 700 · Rockville, MD 20850 · 301.795.1400 · PromarkPartners.com

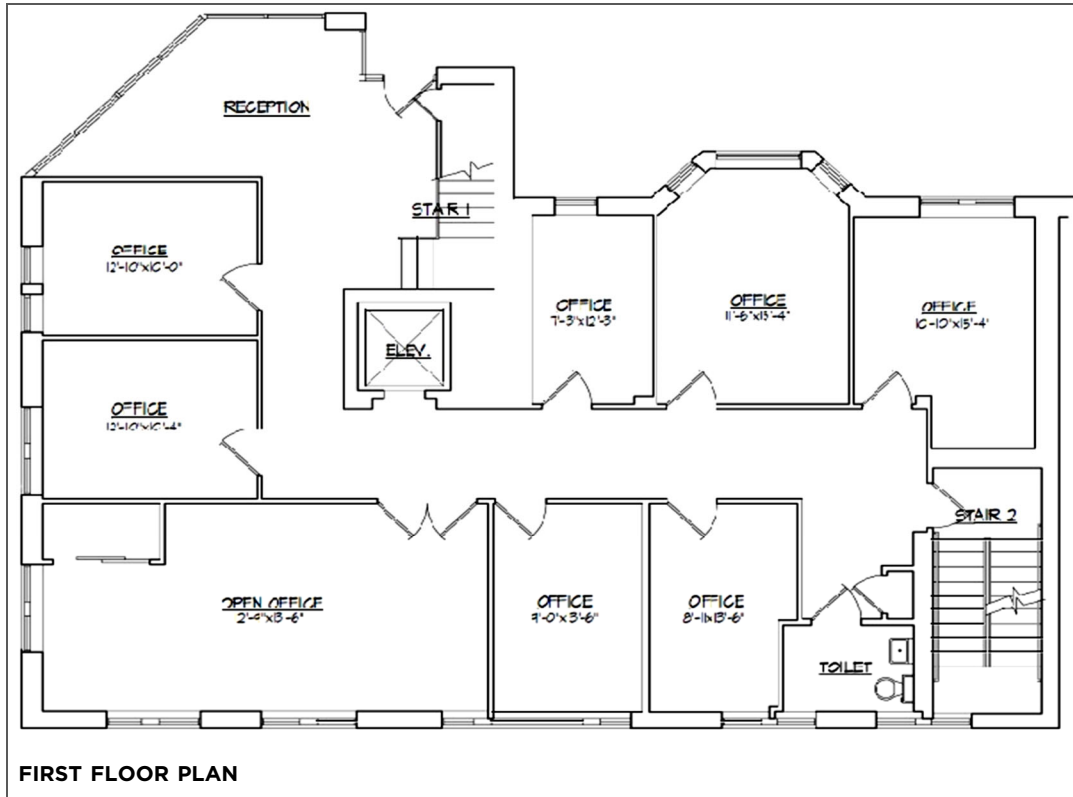


The materials provided herein are for informational purposes only and are not intended to constitute an offer or solicitation. Although information contained herein is from sources deemed reliable, such information has not been verified and is submitted subject to errors, omissions, change of price, withdrawal or further change without notice.



METRO SQUARE | 1611 Duke Street · Alexandria, Virginia

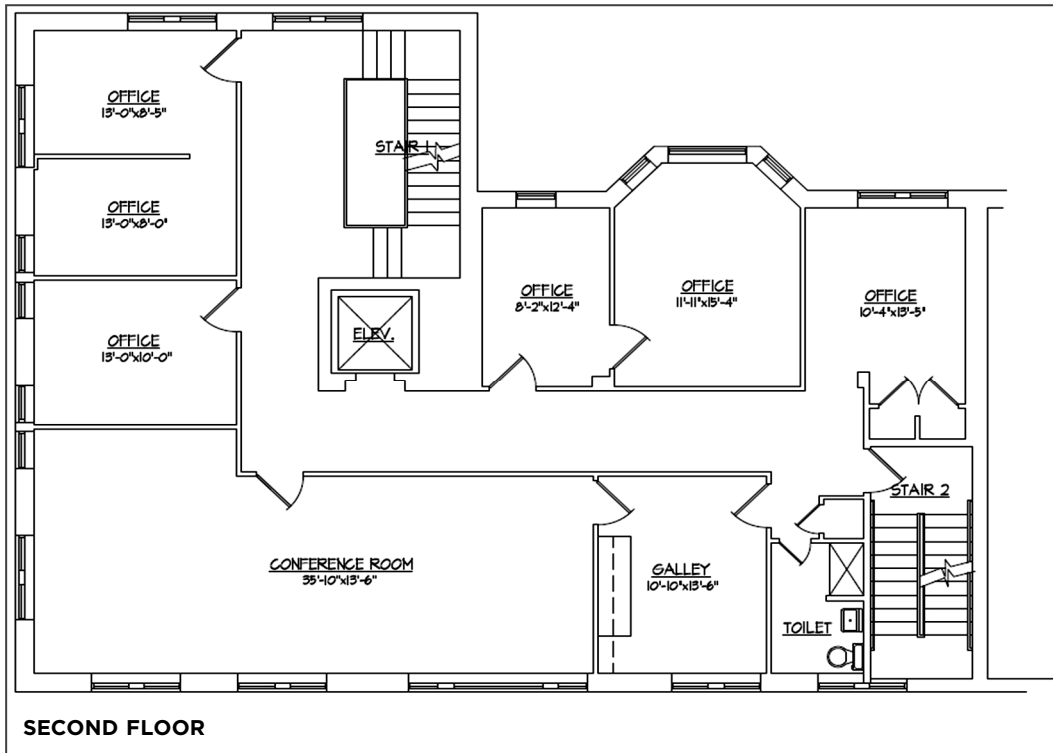
Floor 1 · 2,302 SF





METRO SQUARE | 1611 Duke Street · Alexandria, Virginia

Floor 2 · 2,351 SF

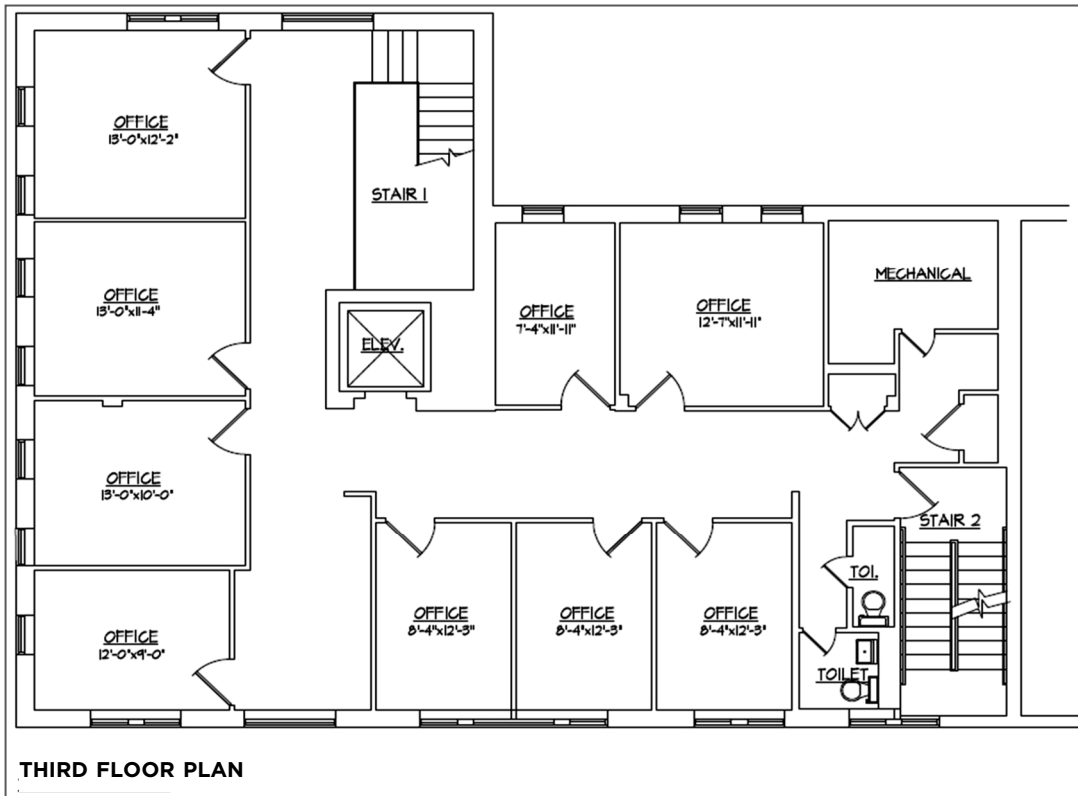


Second floor includes a large conference room which can easily be converted to additional private offices.



METRO SQUARE | 1611 Duke Street · Alexandria, Virginia

Floor 3 · 2,292 SF

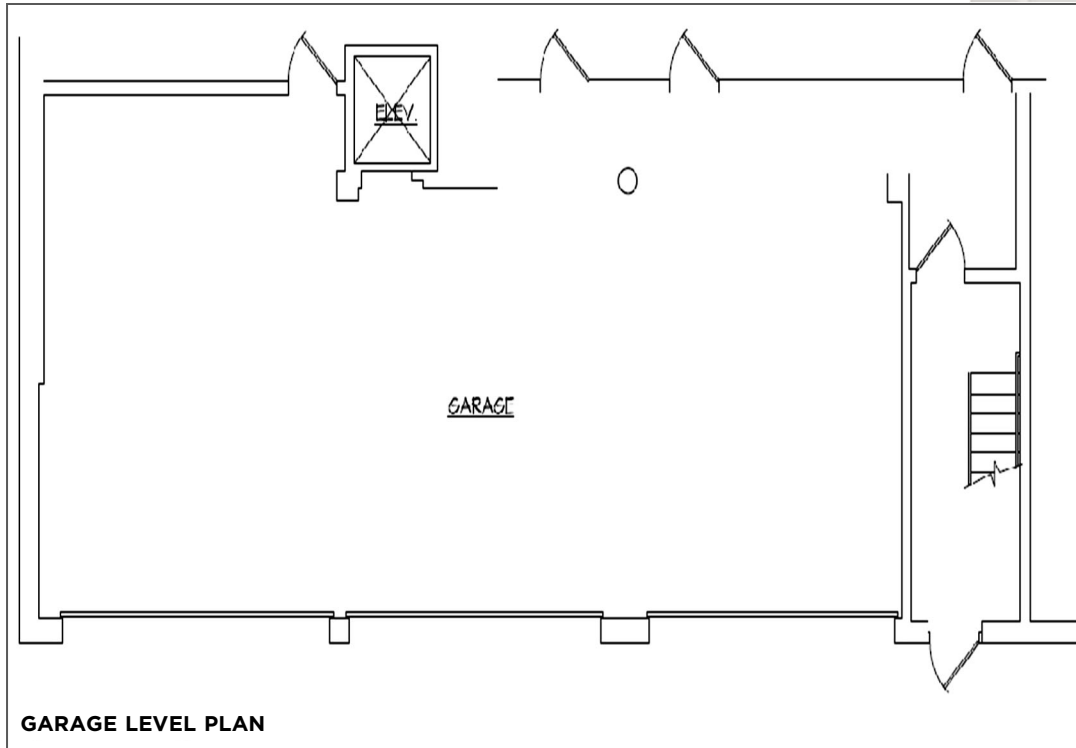


Floor three includes 2 restrooms



METRO SQUARE | 1611 Duke Street · Alexandria, Virginia

Garage Level



(Storage and mechanical room not shown)

First floor reception area



METRO SQUARE | 1611 Duke Street · Alexandria, Virginia

Accessibility from 1611 Duke Street



- 2 blocks to King St. Metro Station & Virginia Railway Express
- Walking distance to Hilton Garden Inn, Residence Inn by Marriott, Embassy Suites Hotel, Whole Foods Market
- Walking distance to Historic Old Town’s famous waterfront shopping & dining district
- 3.9 miles to Ronald Reagan Washington National Airport
- Public parking across the street