

OFFICE SPACE FOR LEASE



FAIRWINDS
TOWER 135 W. Central Blvd.
Orlando, FL 32801

Fairwinds Tower is prestigiously located in downtown Orlando offering tenants panoramic views of the city skyline. The premiere office tower sits on the well known corner of Central Blvd. and Garland Ave.

For a virtual lobby tour, [click here](#).

DOWNTOWN CLASS A OFFICE

RSF Available
1,261 - 6,847



BUILDING HIGHLIGHTS

- Free On-site Visitor Parking
- Cafe & Tenant Lounge
- 24/7 Building Security
- 5% Brokerage Fee

For more information, contact:
Tiffany Zullo
(407) 659.0120 x114 | TZullo@trpre.com

www.trpre.com



SPACE AVAILABLE

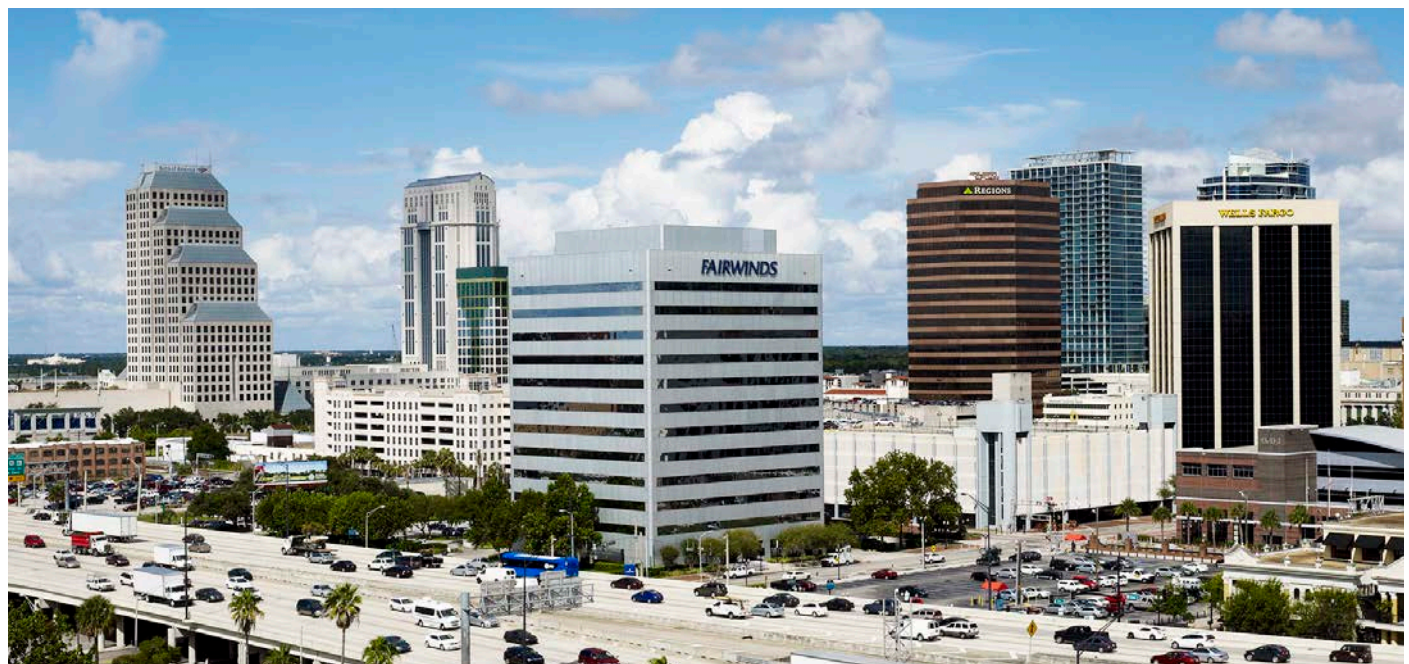
Suite	RSF
340	<u>2,569</u> Virtual Tour
550	<u>6,847</u> Virtual Tour
740	<u>4,656</u> Virtual Tour
750	1,261
1100	5,805

Virtual Tour: [Click Suite RSF](#)
 Property Website: [Click Here](#)



BUILDING FEATURES & AMENITIES

- ▶ New Lobby, Conference Center & Tenant Lounge
- ▶ Free On-Site Visitor Parking
- ▶ Cuban-American Cafe in Lobby
- ▶ Building Security 24 Hours | 7 Days a Week
- ▶ Banking & ATM Services- Fairwinds Credit Union
- ▶ Telcom- AT&T, Spectrum, & Century Link
- ▶ On-Site Institutional Leasing, Management & Engineering
- ▶ Efficient On | Off Access to I-4 & the 408



For more information, contact:

Tiffany Zullo

(407) 659.0120 x114 | TZullo@trpcr.com

www.trpcr.com





ON-SITE CAFE
Newly Renovated



COLLABORATIVE SPACE



NEW LOBBY, CORRIDORS
& Conference Center



For more information, contact:
Tiffany Zullo
(407) 659.0120 x114 | TZullo@trpre.com

www.trpre.com



LOCATION HIGHLIGHTS

- ▶ Fairwinds Tower is centrally located in downtown Orlando, providing quick access on / off I-4 and the 408 Expressway
- ▶ In the hub of downtown Orlando's numerous restaurants, bars, business hotels and lunch delivery options
- ▶ Walking distance to:
 - Lynx Bus Stop: on Property
 - Sunrail Station: 1.5 Blocks (Church St.)
 - Federal Courthouse: 4 Blocks
 - City Hall: 3 Blocks
 - Lynx Central Station: 3 Blocks

For more information, contact:

Tiffany Zullo

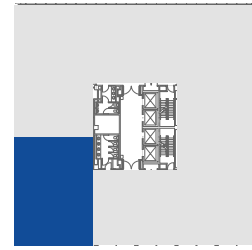
(407) 659.0120 x114 | TZullo@trpcrc.com

www.trpcrc.com

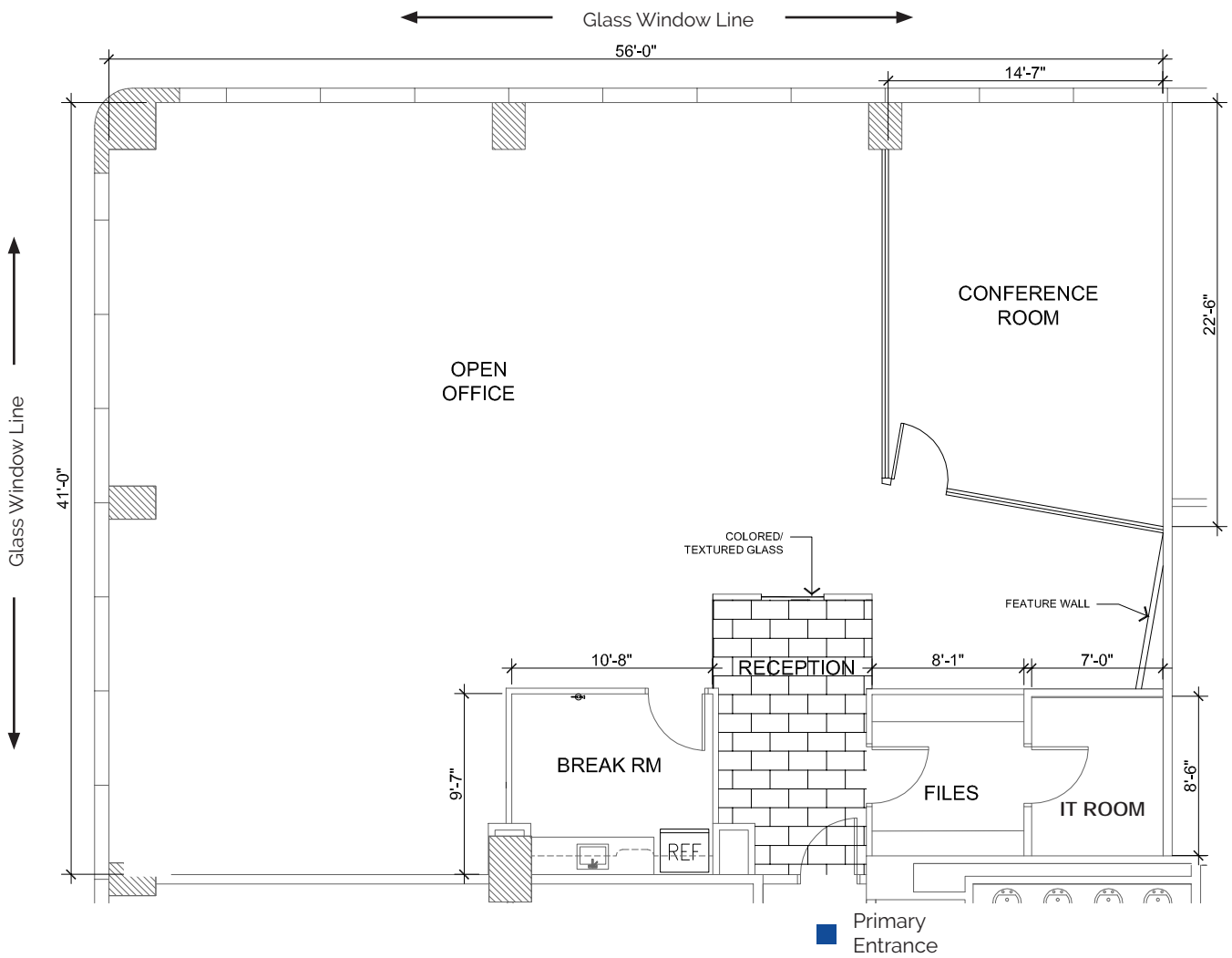


3rd Floor

Suite 340: 2,569 RSF



Virtual Tour: [Click Suite RSF](#)



For more information, contact:
Tiffany Zullo
(407) 659.0120 x114 | TZullo@trpcre.com

www.trpcre.com

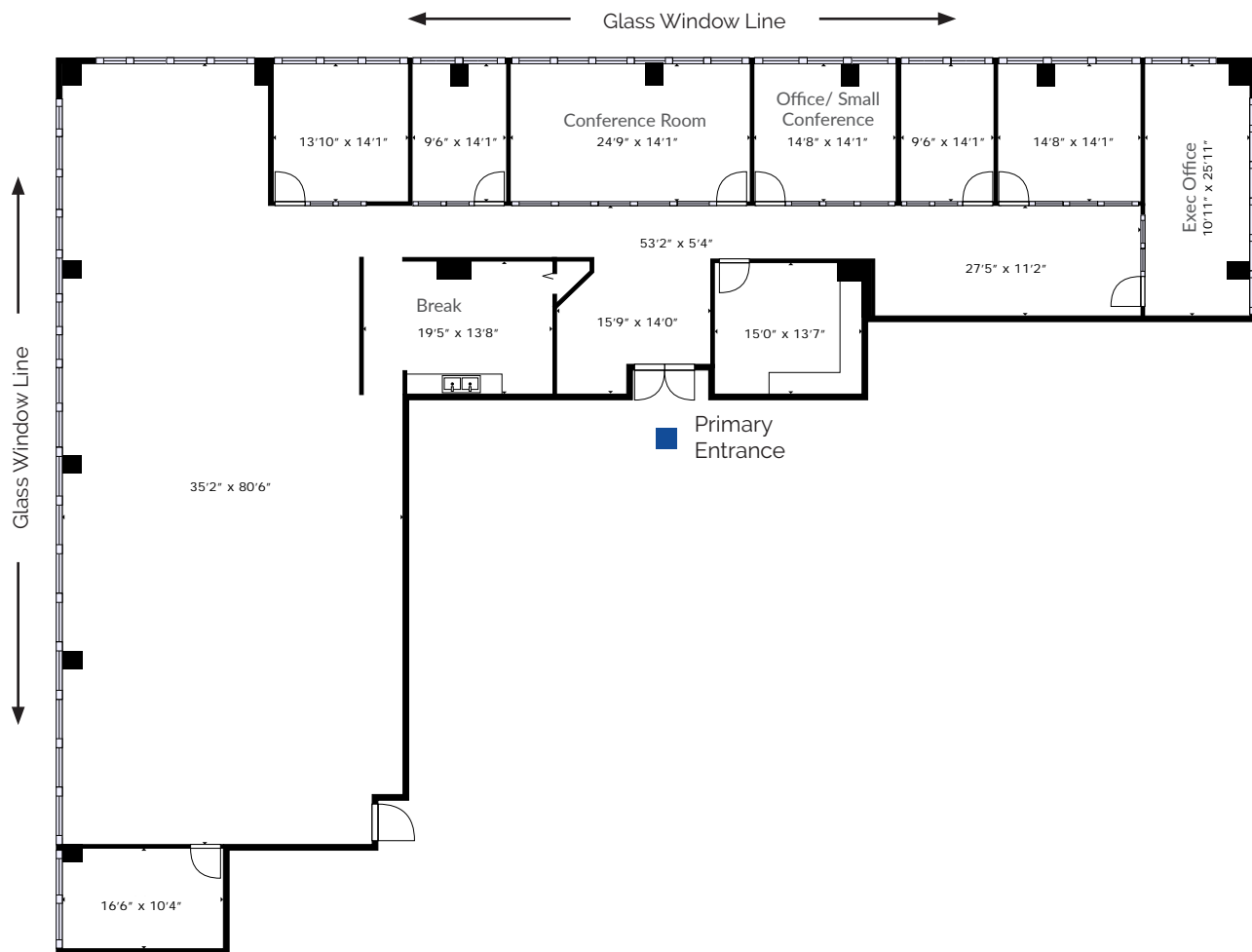


5th Floor

Suite 550: 6,847 RSF

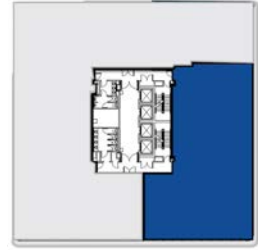


Virtual Tour: [Click Suite RSF](#)

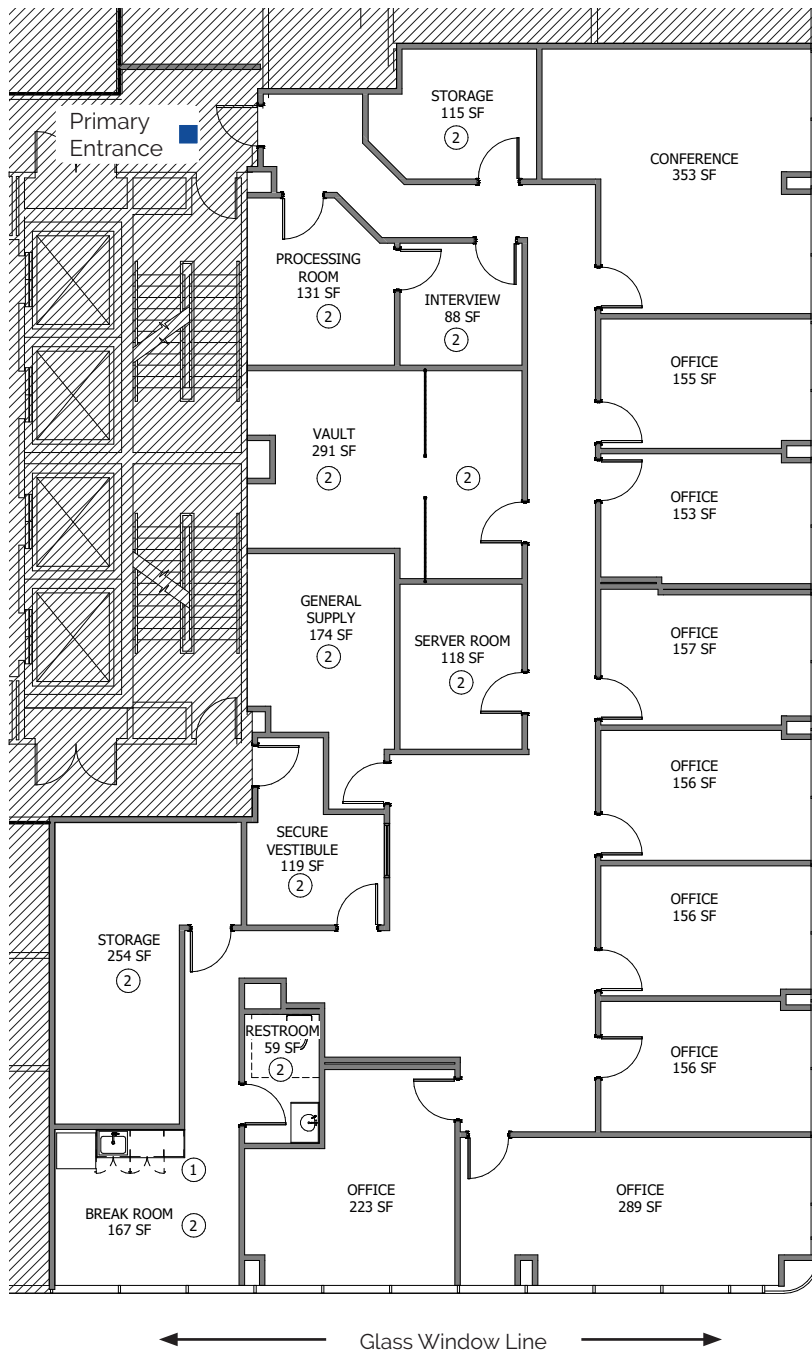


7th Floor

Suite 740: 4,656 RSF



Virtual Tour: Click Suite RSF



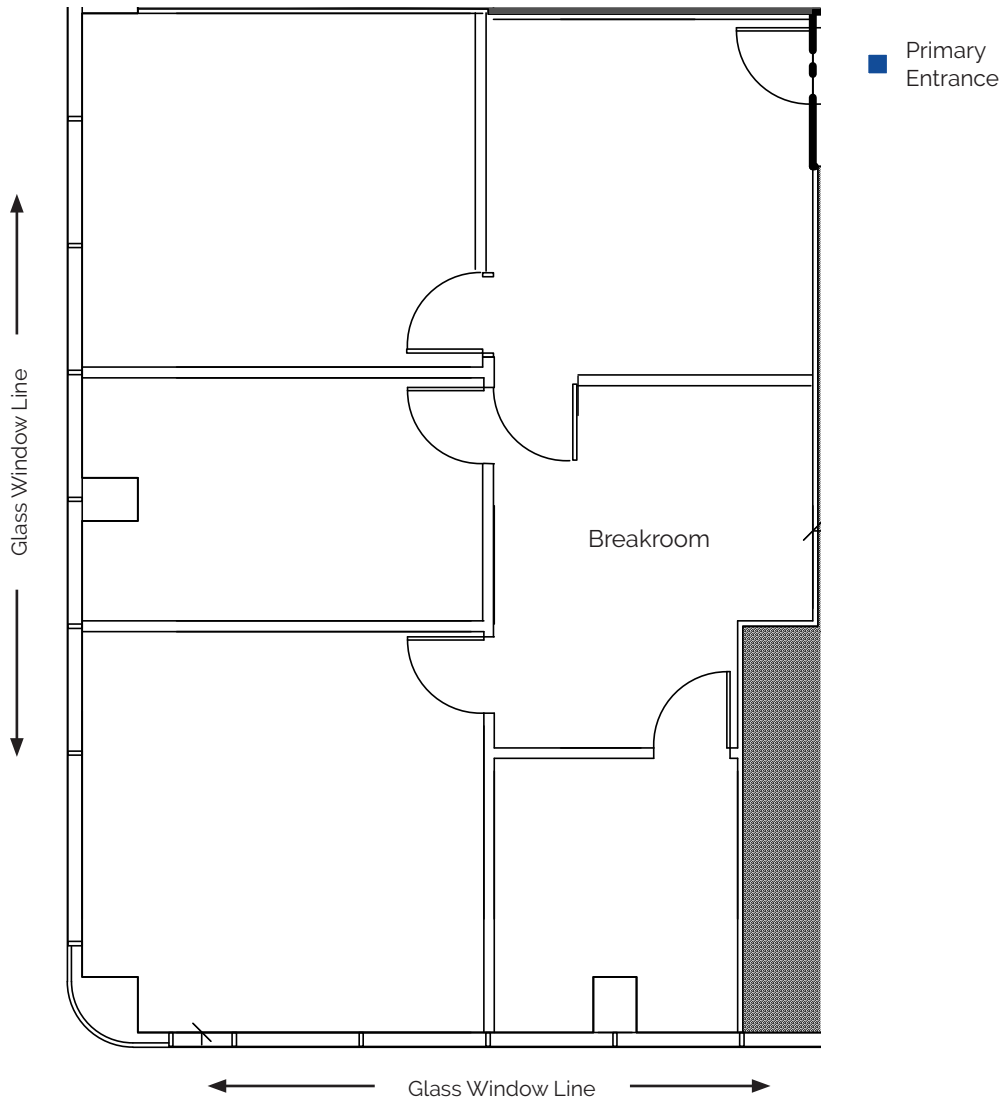
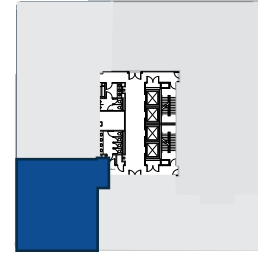
For more information, contact:
Tiffany Zullo
(407) 659.0120 x114 | TZullo@trpcre.com

www.trpcre.com



7th Floor

Suite 750: 1,261 RSF



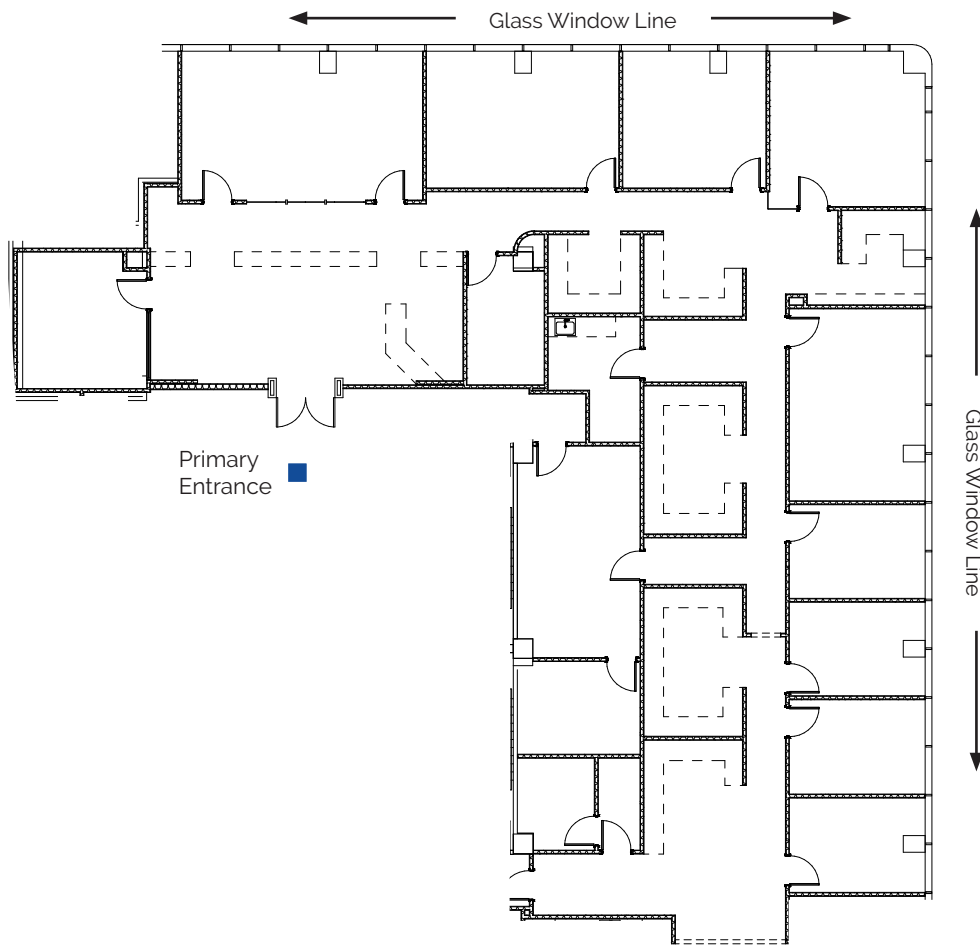
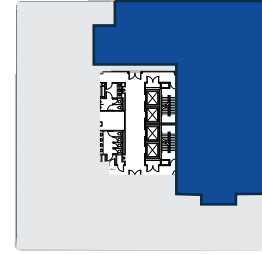
For more information, contact:
Tiffany Zullo
(407) 659.0120 x114 | TZullo@trpcre.com

www.trpcre.com



11th
Floor

Suite 1100 : 5,805 RSF



For more information, contact:

Tiffany Zullo

(407) 659.0120 x114 | TZullo@trpcre.com

www.trpcre.com

