

FOR LEASE

241 Farrell Road

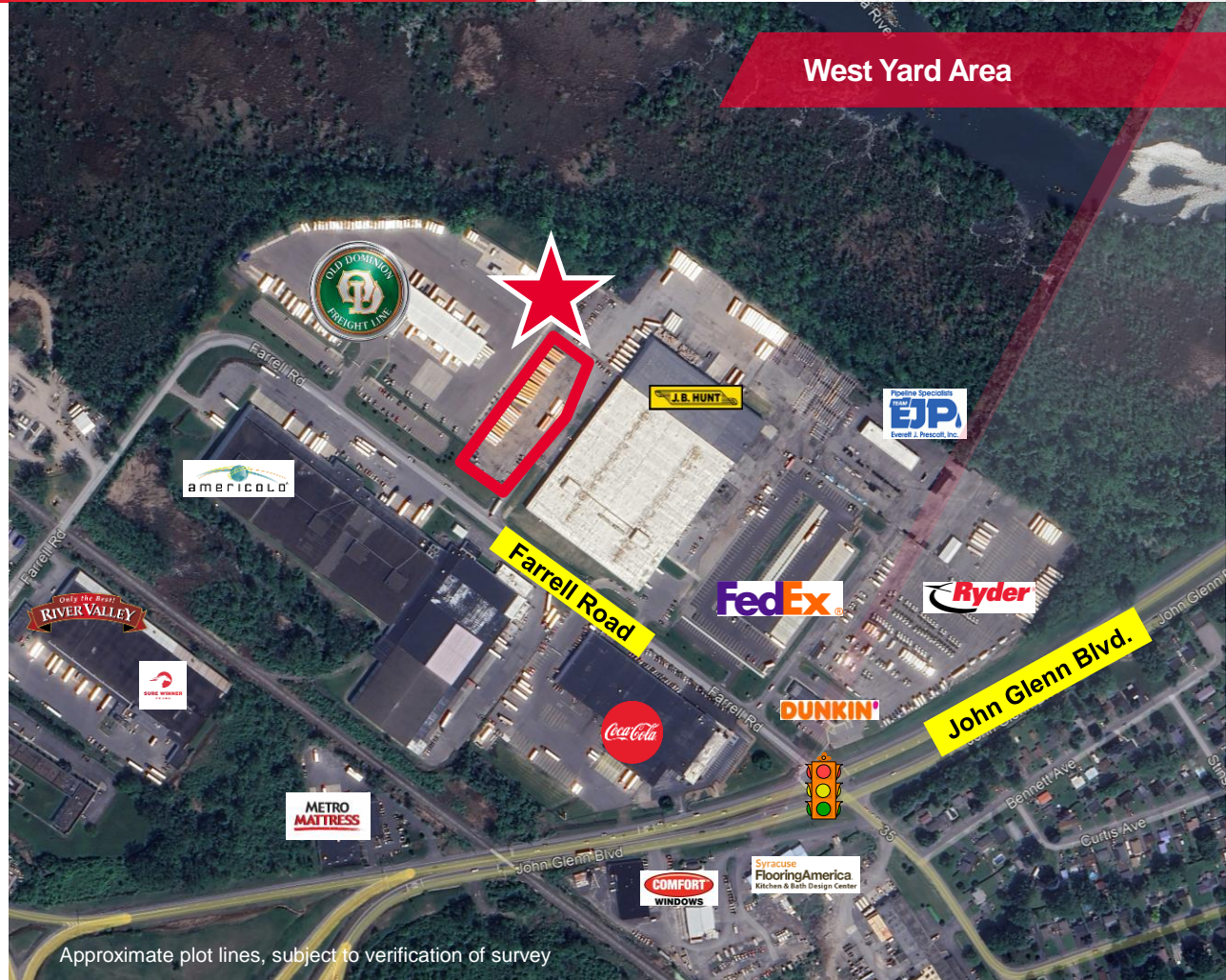
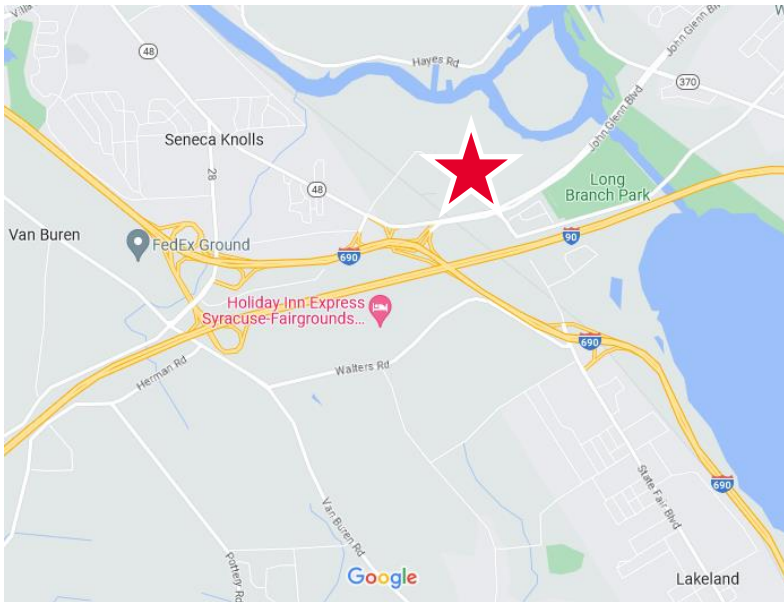
Syracuse, New York 13209



## 2.0± Acres of Yard Space

### Property Highlights

- Proven location with exceptional access to I-690 east/west and I-90 east/west
- Asphalt parking field
- Ability to accommodate short term/temporary parking and storage requirements
- Possible access to electric and fiber
- Partially fenced



Approximate plot lines, subject to verification of survey

### Contact

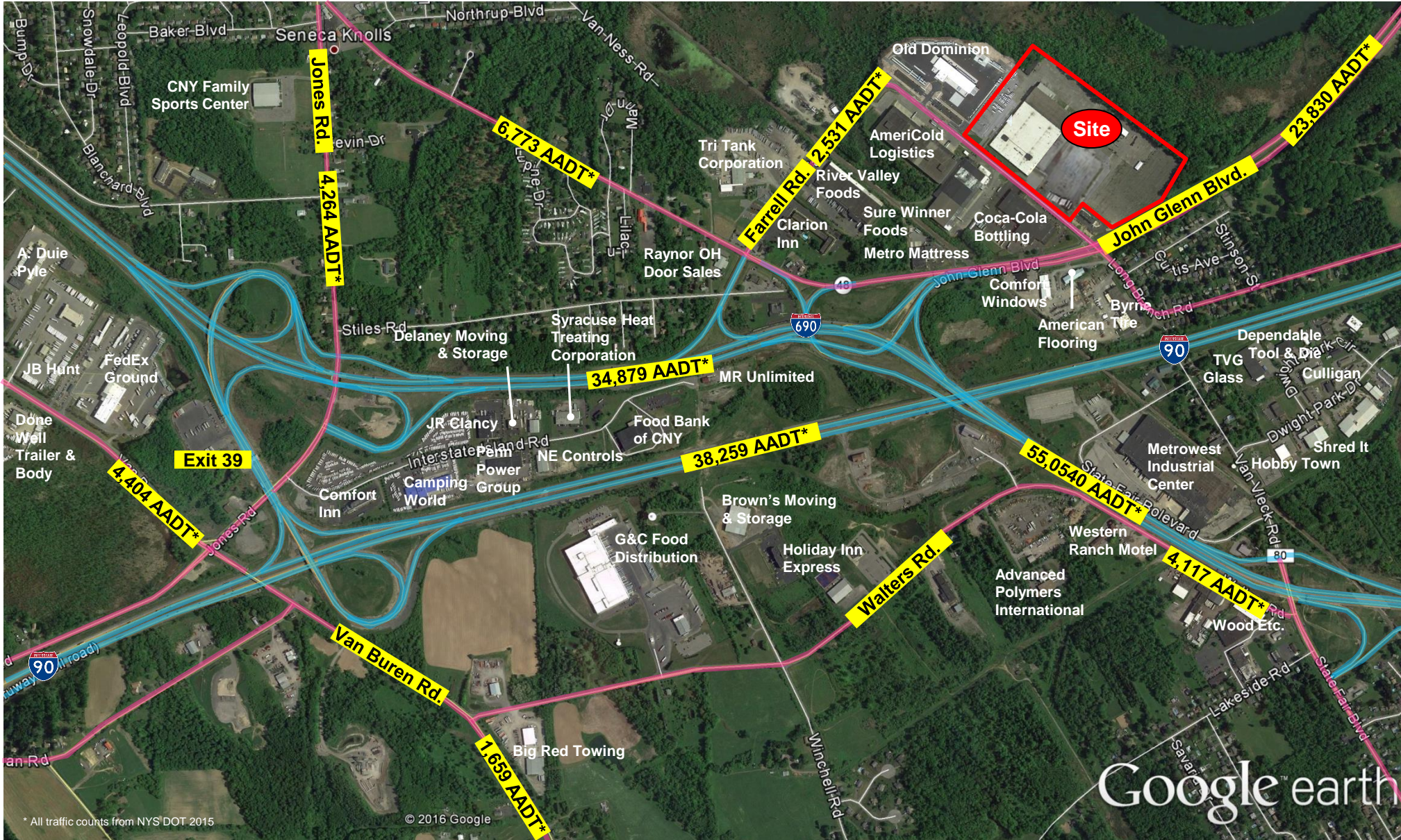
**STEPHEN SCUDERI**  
Real Estate Salesperson  
+1 315 445 8517  
sscuderi@pyramidbrokerage.com

**JOHN L. CLARK, SIOR, CRE**  
President, Real Estate Broker  
+1 315 445 8509  
jclark@pyramidbrokerage.com

5845 Widewaters Pkwy, Suite 200  
East Syracuse, New York 13057  
+1 315 445 1030  
pyramidbrokerage.com

FOR LEASE

241 Farrell Road | Syracuse, New York



\* All traffic counts from NYS DOT 2015

© 2016 Google

Google earth