

MIXED USE WAREHOUSE *OFFICE/WAREHOUSE*

FOR LEASE



8100-8200 N Classen Blvd., Oklahoma City, Oklahoma 73114



7501 Broadway Extension
Oklahoma City, OK 73116

Presented By:

George W. Huffman

CEO | Managing Broker

M: 405.409.4400

O: 405.752.2525

george@iwpok.com

EXECUTIVE SUMMARY

Versatile Industrial Office/Warehouse Space – Multiple Configurations Available

This well-maintained industrial mixed-use office/warehouse property offers a range of suite sizes and layouts to accommodate various business needs. Built for durability and efficiency, the property features concrete tilt-up walls, insulated overhead doors, and an over-insulated roof with high-density foam and a reflective TPO topcoat for superior energy efficiency.

Each suite includes dedicated parking, with additional overflow spaces conveniently located at the west end of the complex entrance. Whether you need warehouse, office, or a combination of both, this property provides flexible space options in a professional, well-kept environment.

Don't miss the opportunity to secure a space in this high-quality, adaptable industrial property. Contact us today for availability and leasing details!

Call: George Huffman @ 405-409-4400 | george@iwpok.com



OFFERING SUMMARY

\$12.00 /SF YEAR

OPEX BASE	\$2.00 / SF
LEASE TYPE	NNN
TYPICAL TERM	3-5 Years
CO-BROKERAGE	3% Primary Term

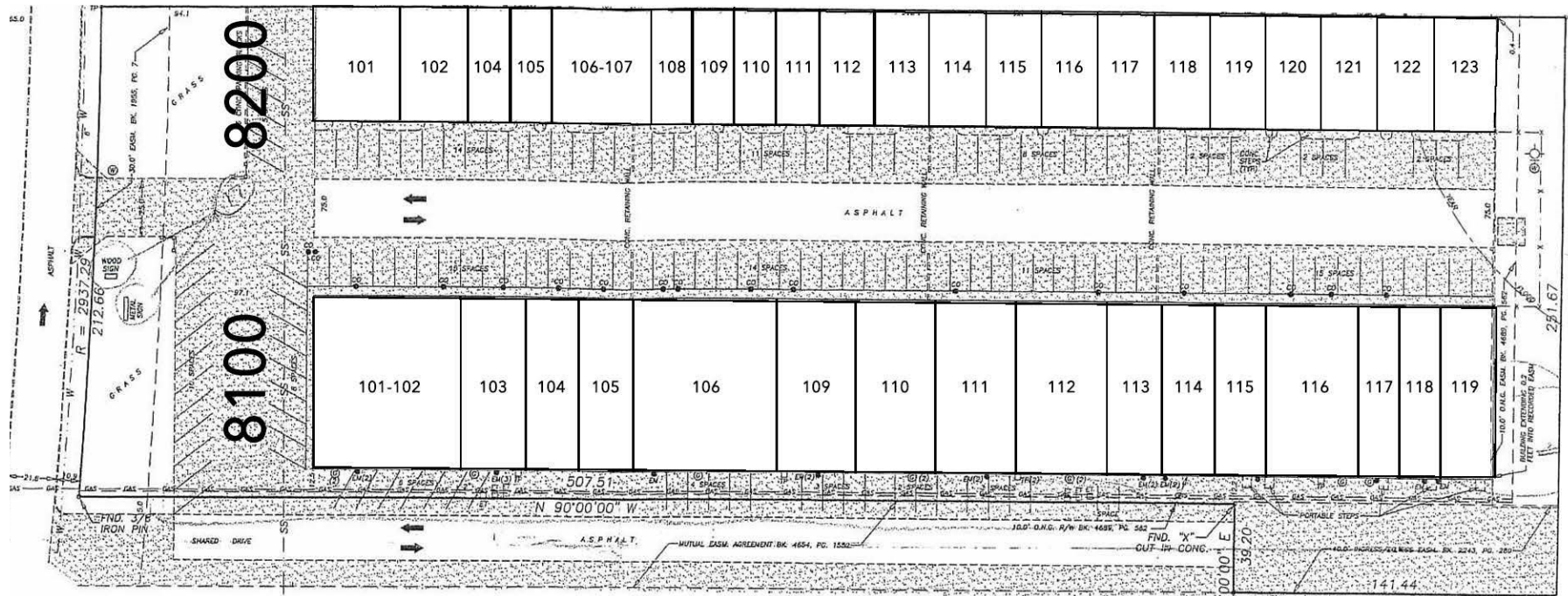
FOR LEASE

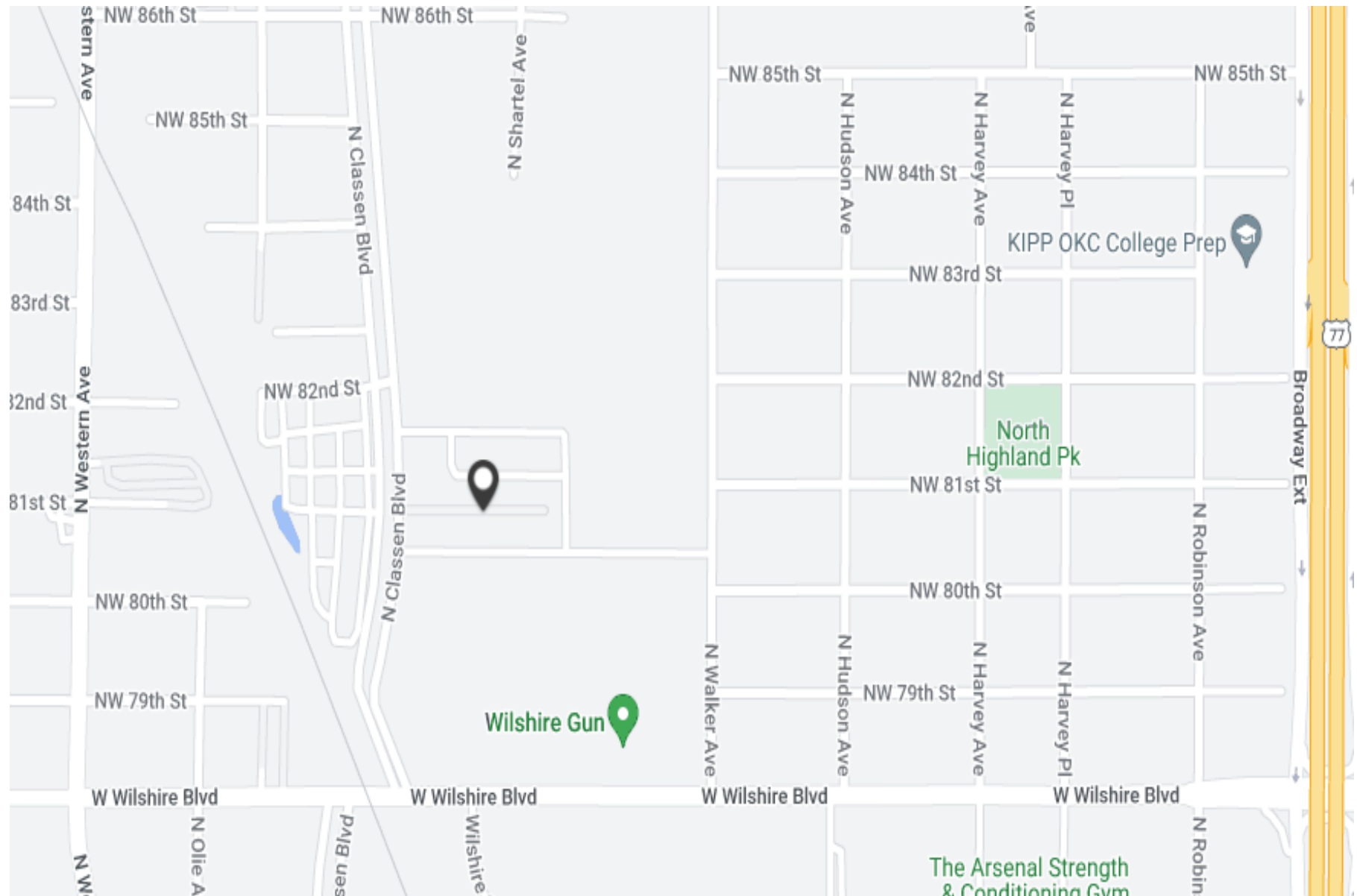
Suite No.	Sq Ft	Notes
8100 - 104	1,875	Flex
8100 - 105	1,825	Flex
8100 - 109	2,625	Flex
8100 - 111	2,625	Flex
8100 - 114	1,875	Flex
8100 - 119	1,800	Flex
8200 - 109	1,000	Flex
8200 - 113	1,250	Flex
8200 - 115	1,250	Flex
8200 - 116	1,250	Flex
8200 - 117	1,250	Flex
8200 - 118	1,250	Flex
8200 - 119	1,250	Flex
8200 - 123	1,150	Flex



FOR LEASE







Highlights:

- Dedicated Parking
- Locally Owned and Managed
- Great Location - North Oklahoma City - Just South of Edmond
- Cannabis Friendly Property

Call: George Huffman @ 405-409-4400 | george@iwpok.com



8100-8200 N Classen Blvd., Oklahoma City, Oklahoma 73114



7501 Broadway Extension
Oklahoma City, OK 73116

Presented By:

George W. Huffman

CEO | Managing Broker

M: 405.409.4400

O: 405.752.2525

george@iwpok.com