

±29,499 SQ. FT.

Free-Standing Flex
Industrial Building
with Office Space

FOR LEASE

8701 BELLANCA AVENUE, LOS ANGELES, CA, 90045

BUILDING HIGHLIGHTS

SITE PLAN

Building Size
±29,499 SF

Office Space
±14,116 SF (2-Story)
±8,516 SF Mezzanine
±5,600 SF First Floor

Clear Height
24'

Dock Doors
6

Ground Level Doors
3 (Via Ramp)

Power
600 Amps (208/208v)

Auto Parking
63 Employee Stalls via
Surface & Underground Lot

Truck Court
Shared & Exclusive Yard

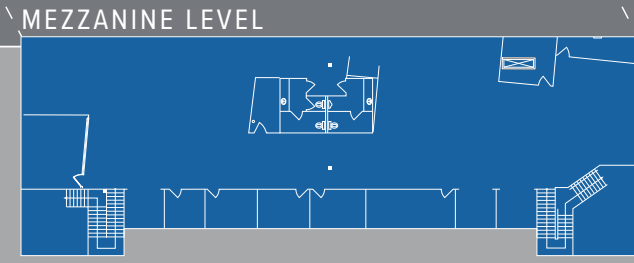
Sprinklers
Yes



- ▲ DH DOORS
- GL DOORS

±29,499 SF

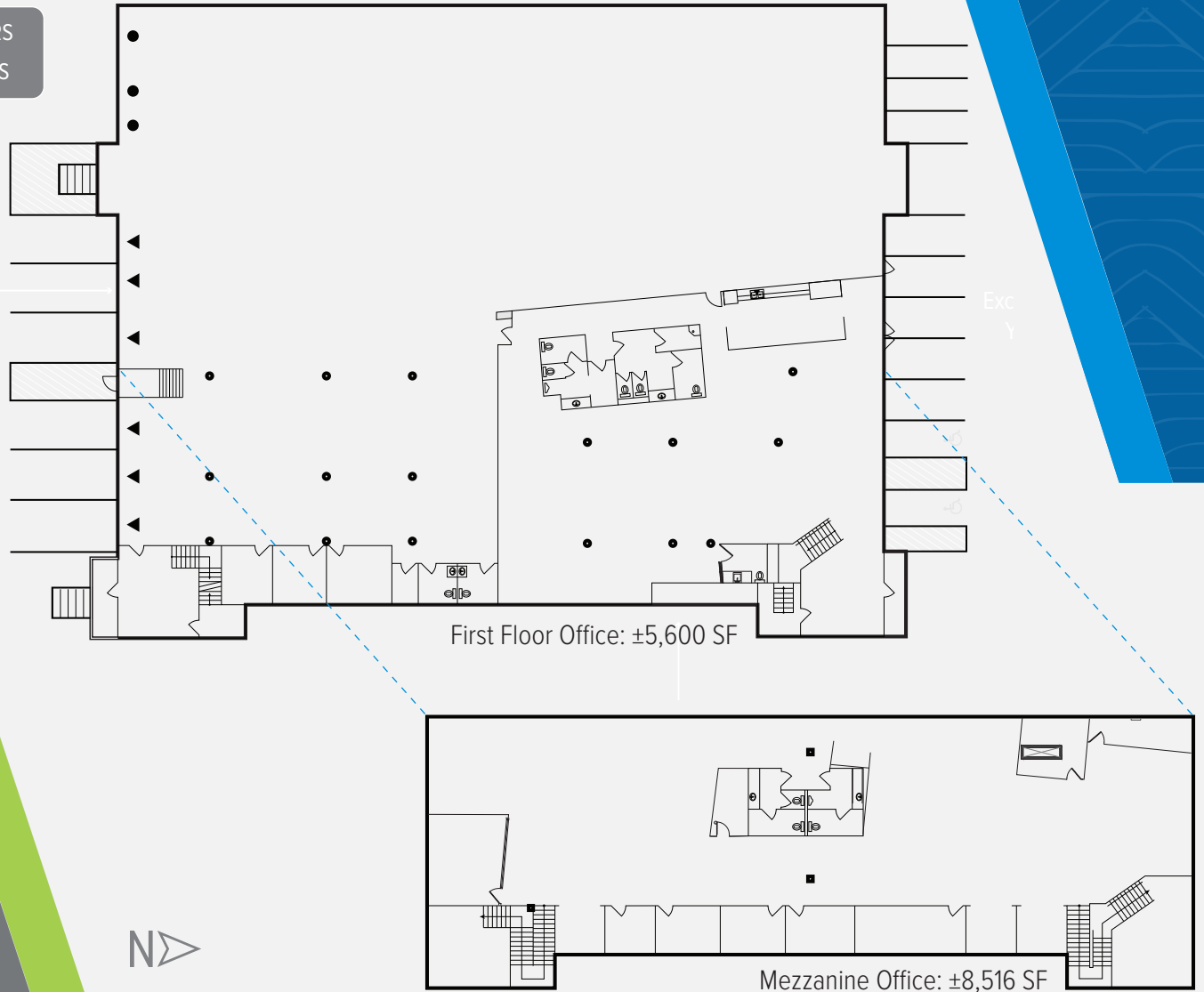
8701 BELLANCA AVENUE, LOS ANGELES, CA, 90045



FLOOR
PLAN



- ▲ DH DOORS
- GL DOORS



±29,499 SF

8701 BELLANCA AVENUE, LOS ANGELES, CA, 90045

8701 BELLANCA AVENUE

FOR MORE
INFORMATION,
PLEASE CONTACT

GREG DYER

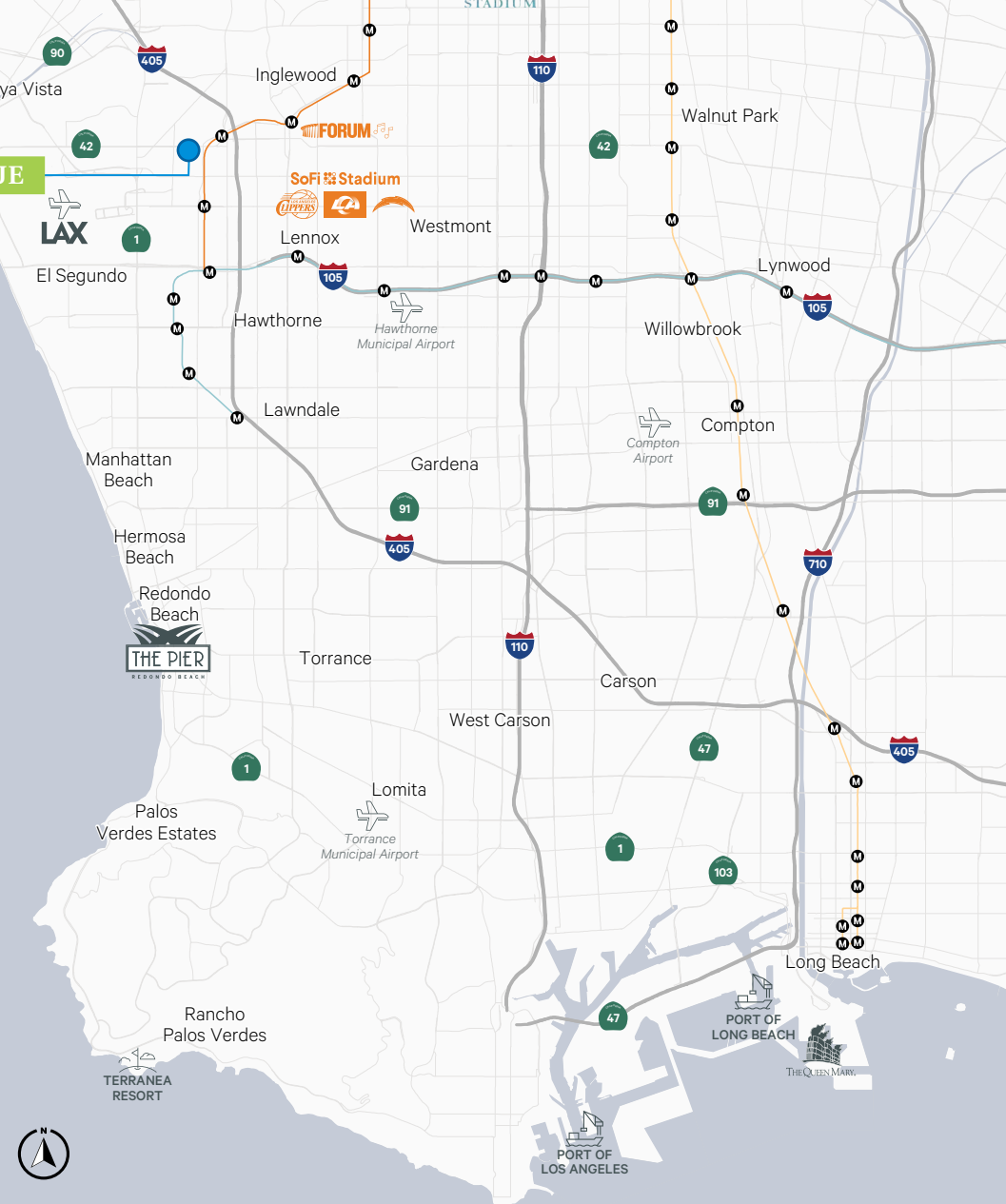
Executive Vice President
Lic. 01199659
+1 310 363 4953
greg.dyer@cbre.com

RYAN WENGERT

Senior Associate
Lic. 02089469
+1 310 363 4848
ryan.wengert@cbre.com

BILL DURSLAG

Senior Vice President
Lic. 00498427
+1 213 613 3106
bill.durslag@cbre.com



2.5 Miles
to LAX



13.4 Miles
to DTLA



8.3 Miles
to West LA



22.2 Miles
Port of LA



22.5 Miles
Port of LB



Free-Standing Flex Industrial Building with Office Space FOR LEASE

© 2024 CBRE, Inc. All rights reserved. This information has been obtained from reliable sources but has not been verified for accuracy or completeness. CBRE, Inc. makes no guarantee, representation, or warranty and accepts no responsibility or liability for the accuracy, completeness, or reliability of the information contained herein. You should conduct a careful, independent investigation of the property and verify all information. Any reliance on this information is solely at your own risk. CBRE and the CBRE logo are service marks of CBRE, Inc. All other marks displayed on this document are the property of their respective owners, and the use of such marks does not imply any affiliation with or endorsement of CBRE. Photos herein are the property of their respective owners. Use of these images without the express written consent of the owner is prohibited.