

# TAMPA BAY PARK

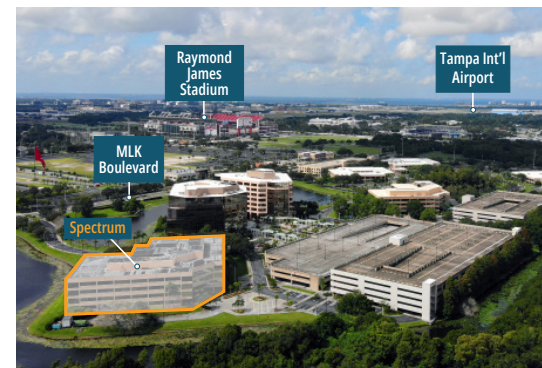
 3101 W Dr Martin Luther King Jr Blvd  
Tampa, FL 33614

"Plug & Play" Office Sublease Available



## PROPERTY HIGHLIGHTS

- Class A office sublease
- "Plug & Play" Headquarters and Call Center
- Master lease expires: 8/31/2030
- Floor Sizes:
  - 1st Floor: 3,539 - 18,672 RSF
  - 2nd Floor: 17,209 - 39,205 RSF
  - 3rd Floor: **LEASED**
  - 4th Floor: 968 - 21,624 RSF**Total Availability: 79,501 RSF**
- Amenities:
  - Banking, Bicycle Storage, Bus Line, Property Manager on Site, Restaurant, Shower Facilities, Monument Signage, and Waterfront Views
- 5.51/1,000 SF parking ratio
- TI Allowance Available
- CAT 6 Cabling
- Ceiling heights up to 12'
- Generator: CAT, 1000 KW, 1700 gallon diesel tank



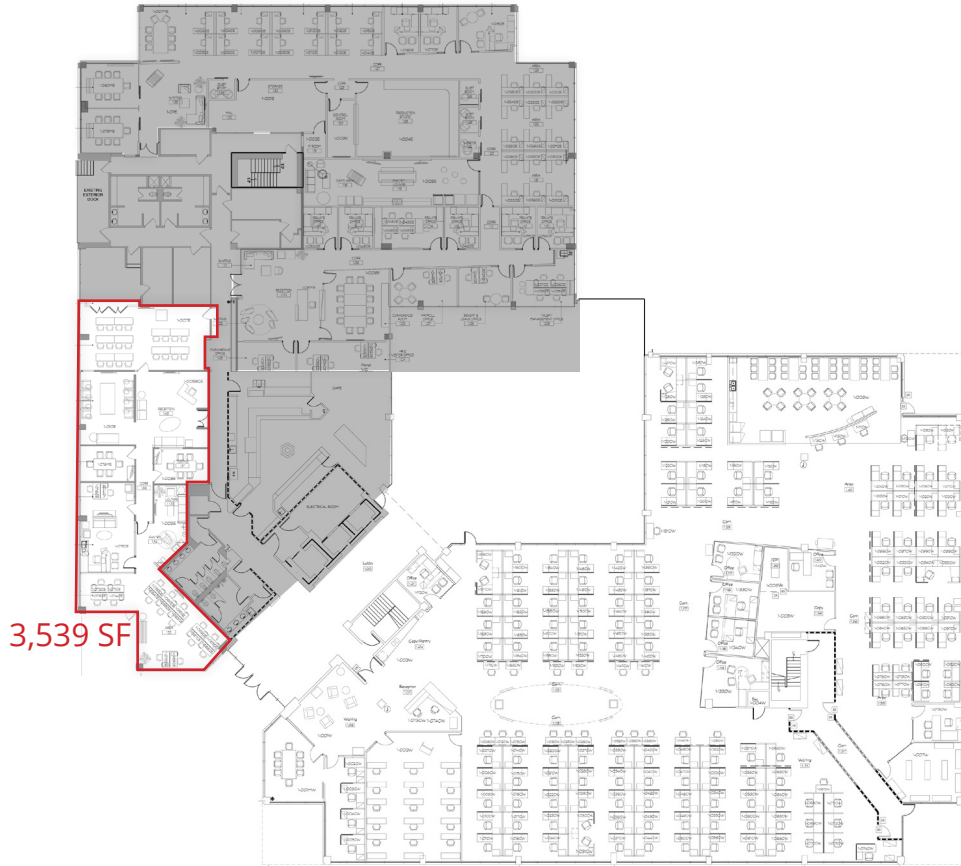
**CHAD RUPP**  
Managing Director  
813.345.5891  
Chad.Rupp@FranklinSt.com

**MATT ALEXANDER**  
Director  
813.559.2006  
Matthew.Alexander@FranklinSt.com



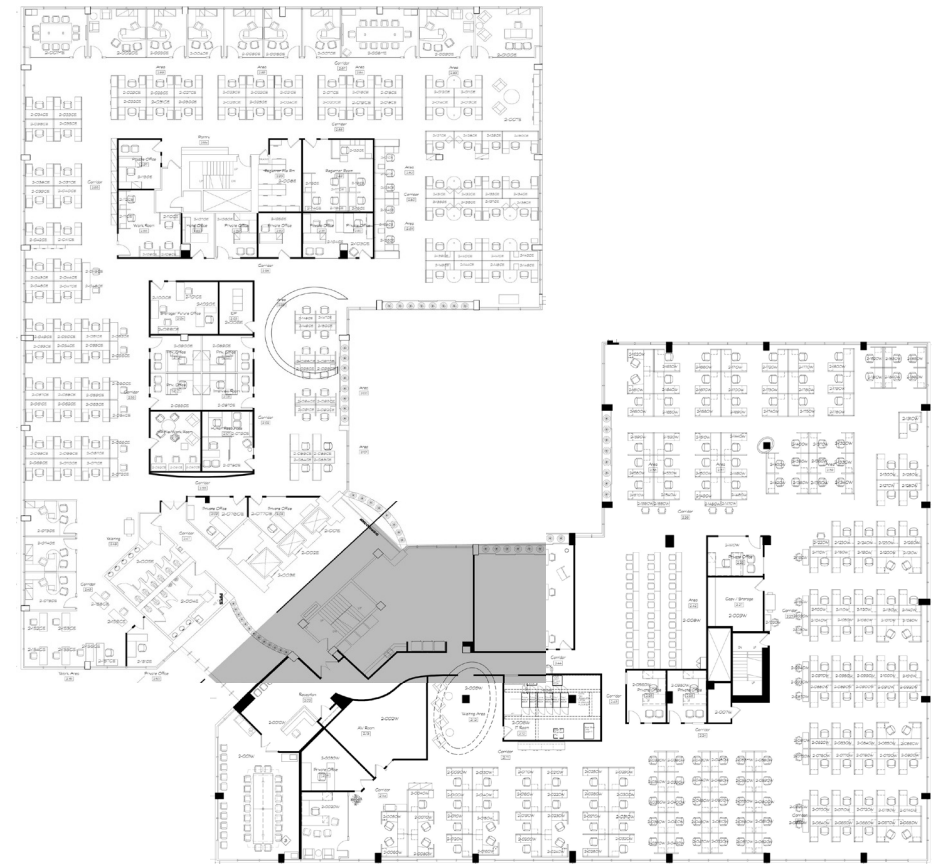
LICENSED REAL ESTATE BROKER | FranklinSt.com

### FLOOR 1: 3,539 - 18,672 RSF



|                        |                 |                       |   |
|------------------------|-----------------|-----------------------|---|
| Offices:               | 23              | Copy/Storage:         | 1 |
| Workstations:          | 107             | Mail/Storage:         | 1 |
| XL Conference Rooms:   | 0 (12+ seats)   | Training:             | 3 |
| Lg. Conference Rooms:  | 2 (10-12 seats) | Lounge:               | 2 |
| Med. Conference Rooms: | 6 (6 - 8 seats) | Nursing/Comfort Room: | 1 |
| Sm Conference Rooms:   | 3 (2 - 4 seats) | I.T.:                 | 2 |
| Reception:             | 3               | Break Room:           | 3 |
| File Room:             | 1               |                       |   |

### FLOOR 2: 17,209 - 39,205 RSF



|                        |                 |                       |   |
|------------------------|-----------------|-----------------------|---|
| Offices:               | 29              | Copy/Storage:         | 0 |
| Workstations:          | 315             | Mail/Storage:         | 1 |
| XL Conference Rooms:   | 1 (12+ seats)   | Training:             | 2 |
| Lg. Conference Rooms:  | 3 (10-12 seats) | Lounge:               | 1 |
| Med. Conference Rooms: | 0 (6 - 8 seats) | Nursing/Comfort Room: | 0 |
| Sm Conference Rooms:   | 0 (2 - 4 seats) | I.T.:                 | 1 |
| Reception:             | 1               | Break Room:           | 2 |
| File Room:             | 1               | AV Room:              | 1 |

FLOOR 3: LEASED



|                        |                 |                       |   |
|------------------------|-----------------|-----------------------|---|
| Offices:               | 9               | Copy/Storage:         | 5 |
| Workstations:          | 243             | Mail/Storage:         | 1 |
| XL Conference Rooms:   | 1 (12+ seats)   | Training:             | 3 |
| Lg. Conference Rooms:  | 4 (10-12 seats) | Lounge:               | 0 |
| Med. Conference Rooms: | 1 (6 - 8 seats) | Nursing/Comfort Room: | 1 |
| Sm Conference Rooms:   | 2 (2 - 4 seats) | I.T.:                 | 1 |
| Reception:             | 1               | Break Room:           | 2 |
| File Room:             | 1               |                       |   |

FLOOR 4: 968 - 21,624 RSF



|                        |                 |                       |   |
|------------------------|-----------------|-----------------------|---|
| Offices:               | 11              | Copy/Storage:         | 2 |
| Workstations:          | 242             | Mail/Storage:         | 0 |
| XL Conference Rooms:   | 0 (12+ seats)   | Training:             | 1 |
| Lg. Conference Rooms:  | 0 (10-12 seats) | Lounge:               | 1 |
| Med. Conference Rooms: | 3 (6 - 8 seats) | Nursing/Comfort Room: | 0 |
| Sm Conference Rooms:   | 0 (2 - 4 seats) | I.T.:                 | 2 |
| Reception:             | 0               | Break Room:           | 3 |
| File Room:             | 0               |                       |   |

968 RSF

# Tampa Bay Park

3101 W Dr Martin Luther King Jr Blvd | Tampa, FL 33614

**CLASS A OFFICE FOR SUBLEASE**



Click here to view the **VIRTUAL TOUR**

