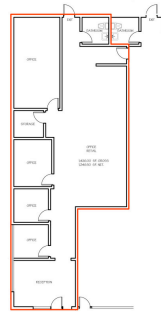


# For Lease

501 W. Channel Islands Blvd  
Port Hueneme, CA



## RETAIL AVAILABLE

1,400± SF @ \$2.50/SF

Ground Floor Retail | Tons of Parking

Corner Location | Front & Back Entrance



## PENTHOUSE OFFICE AVAILABLE

6,800± SF – 3,000± SF

\$1.75/SF

## 2 OFFICES AVAILABLE

700± @ \$2.00/SF

2nd Floor Office Spaces Available  
Approx 700 SF ready for  
immediate Occupancy.



**Kirk Garabedian | 818-298-8810**

KirkG@KW.com

DRE# 01216376



889 AMERICANA WAY, #408, GLENDALE, CA 91210 | KELLER WILLIAMS REAL ESTATE SERVICES. Each Office is Independently Owned and Operated. If your property is currently listed with another broker, this is not intended as a solicitation. Keller Williams Realty does not guarantee the accuracy of square footage, lot size, or other information concerning the condition or features of the property provided by the seller or obtained from public records or other sources and the buyer is advised to independently verify the accuracy of that information through personal inspection with appropriate licensed professionals.