

111 BEEBE ROAD

SPRINGFIELD, GA 31329

PROPERTY HIGHLIGHTS

- +/- 0.45 acres
- Available for ground lease
- Retail and restaurant opportunity
- Excellent visibility and access

TRAFFIC COUNTS

VEHICLES / DAY

Highway 21 14,700

DEMOGRAPHICS

1 MILE 3 MILES 5 MILES

DEMOGRAPHICS	1 MILE	3 MILES	5 MILES
Total Households	349	3,057	5,755
Total Population	814	7,258	14,848
Average HH Income	\$130,703	\$91,578	\$88,904

[Google Maps Link](#)



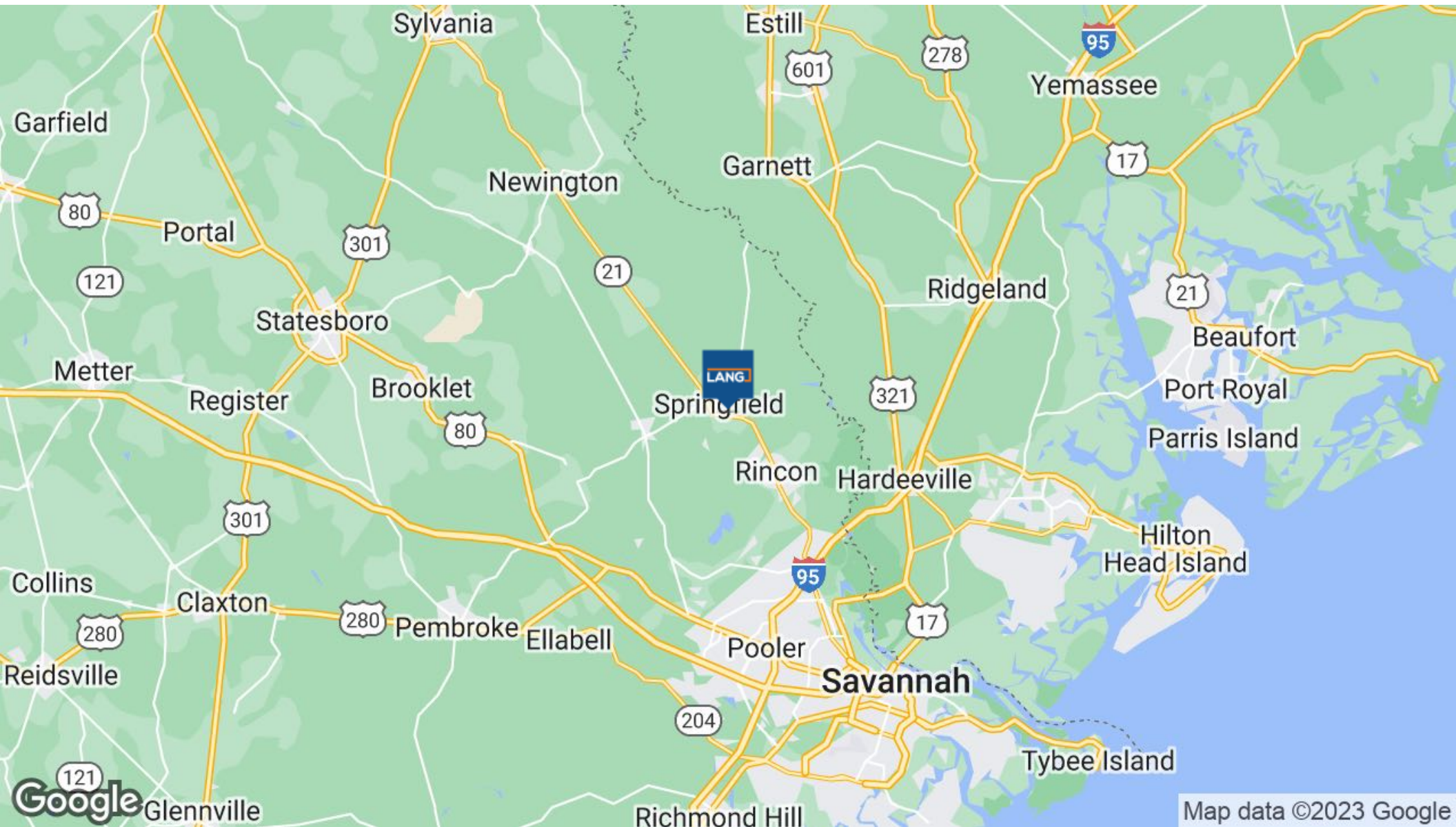
For More Information

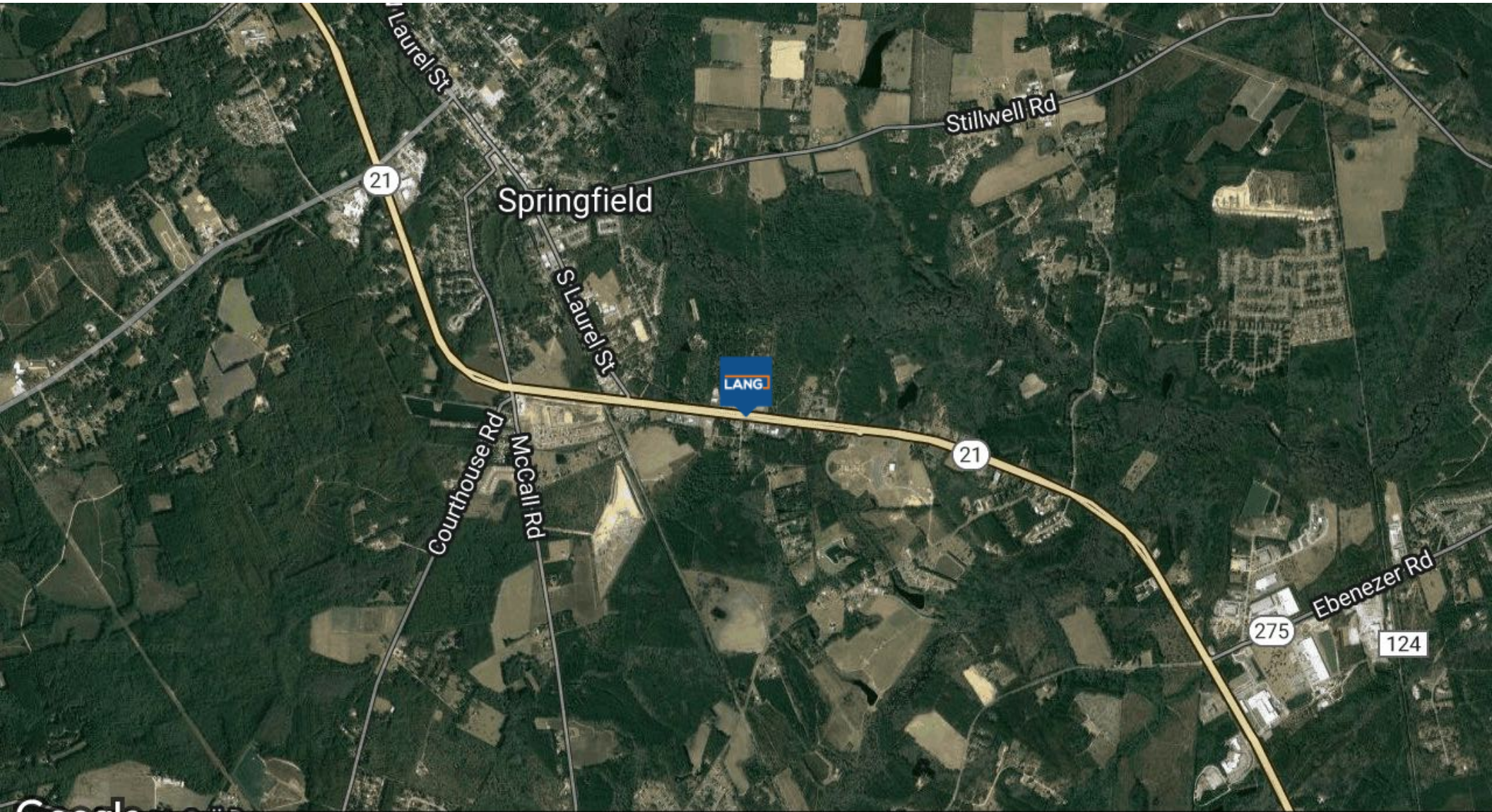
JACOB LANG

912.358.1166

jacob@langcre.com

LANGCRE.COM





Google Map data ©2023 Imagery ©2023 Landsat / Copernicus, Maxar Technologies, U.S. Geological Survey, USDA/FPAC/GEO



POPULATION	1 MILE	3 MILES	5 MILES
Total Population	814	7,258	14,848
Average Age	34.3	34.4	34.9
Average Age (Male)	33.8	34.4	34.5
Average Age (Female)	34.4	34.0	35.3

HOUSEHOLDS & INCOME	1 MILE	3 MILES	5 MILES
Total Households	349	3,057	5,755
# of Persons per HH	2.3	2.4	2.6
Average HH Income	\$130,703	\$91,578	\$88,904
Average House Value	\$177,380	\$171,611	\$170,667

* Demographic data derived from 2020 ACS - US Census

