



GREAT VALLEY COMMERCE CENTER

BUILDING FOUR

151 Logistics Parkway Northeast, White, Georgia 30184

MOVE-IN READY

290,140 SF Available

NAI Brannen Goddard

LEASING AGENT



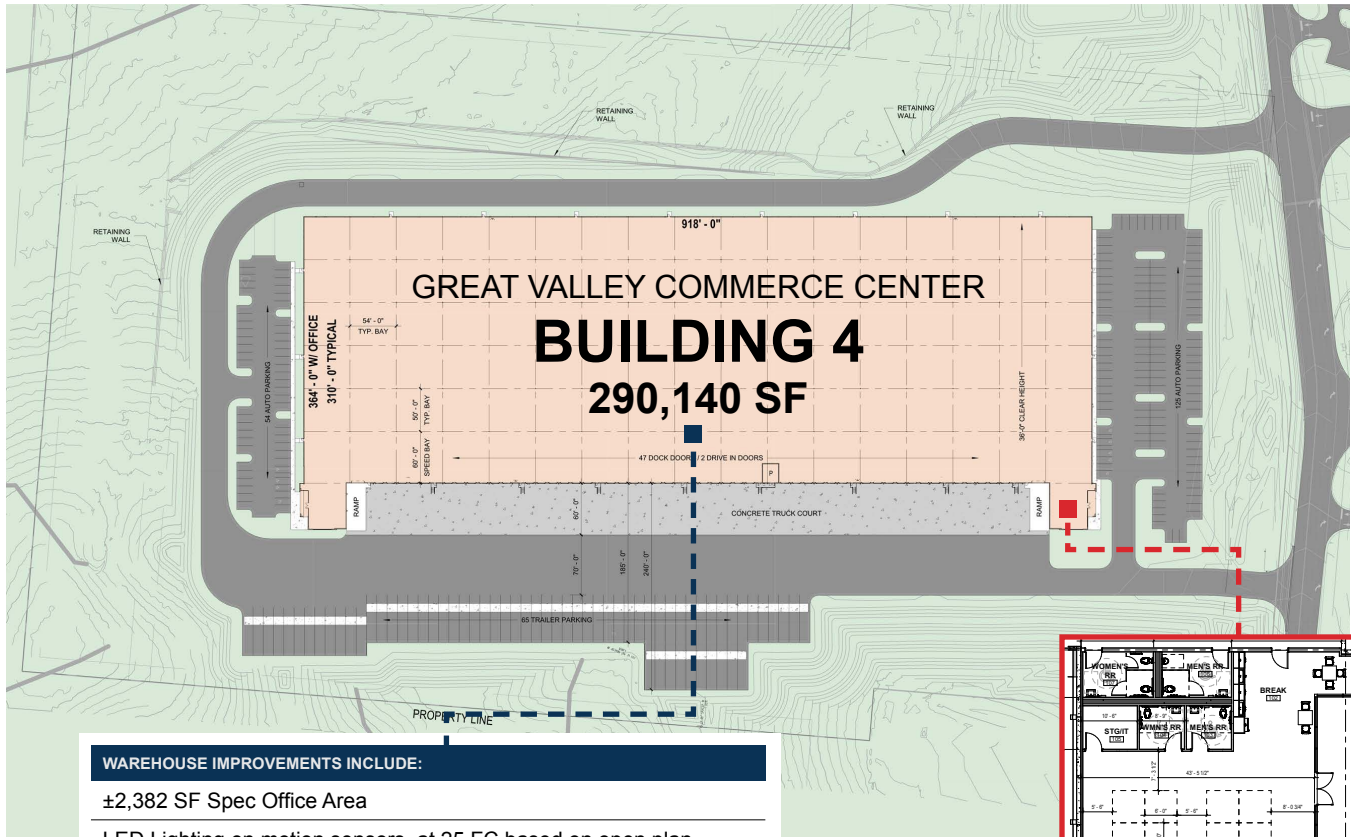
DEVELOPER

GREAT VALLEY COMMERCE CENTER

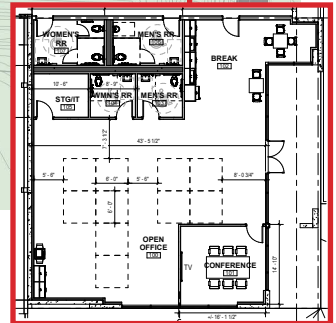
BUILDING FOUR

151 Logistics Parkway Northeast, White, Georgia 30184

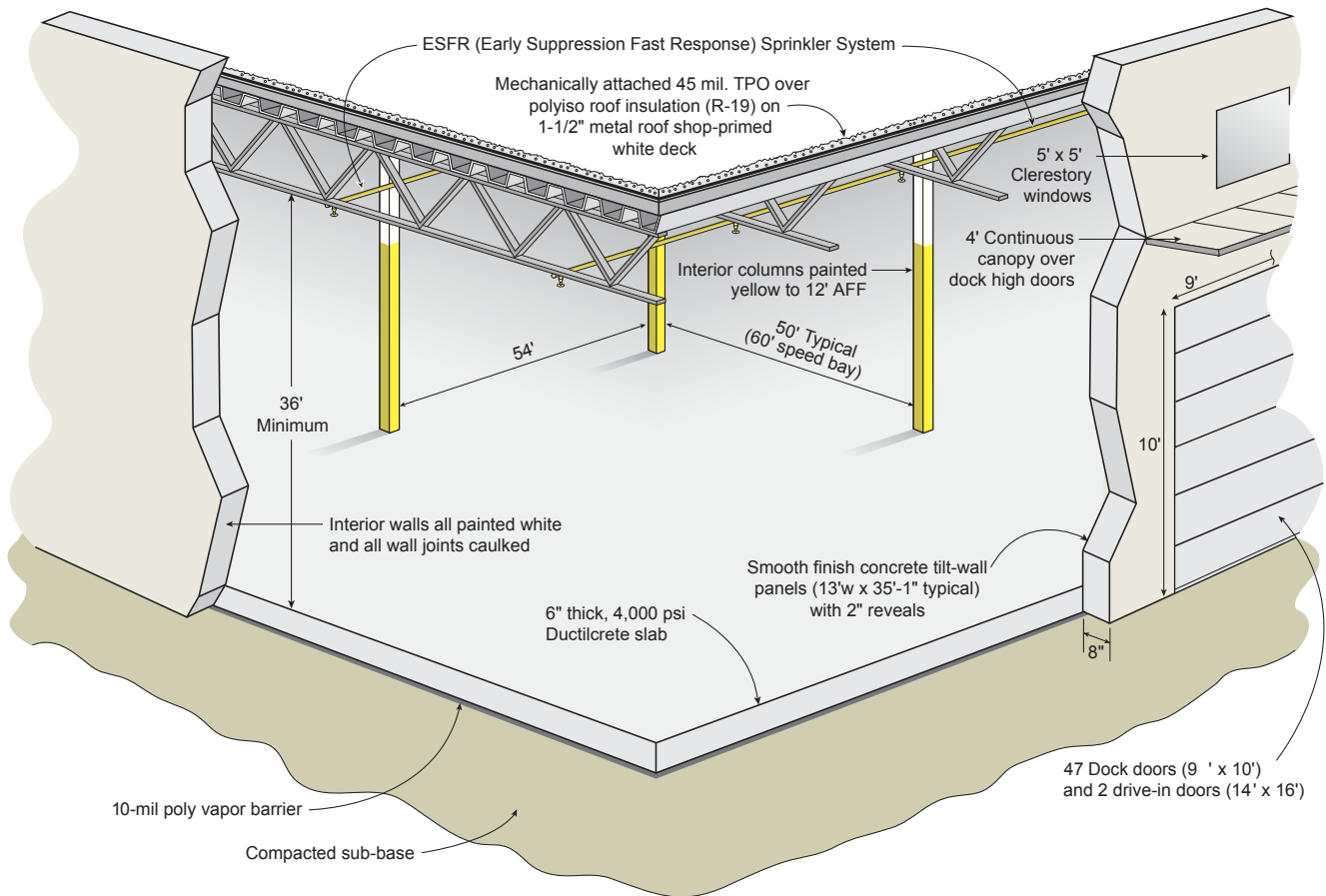
Great Valley Commerce Center is located only two miles from I-75 in the heart of the Northwest industrial submarket. With great access to I-75 and less than 50 miles to the Appalachian Regional Port (Inland Port) which provides direct rail service to the Port of Savannah, Great Valley Commerce Center is ideal for local, regional and national distribution. Bartow County is home to over 140 manufacturers and one of the strongest labor markets in Georgia with a population of more than 1 million people within a 45 minute drive.



- WAREHOUSE IMPROVEMENTS INCLUDE:**
- ±2,382 SF Spec Office Area
 - LED Lighting on motion sensors, at 25 FC based on open plan
 - 40,000-lb. Rite Hite mechanical pit levelers every other dock door
 - Two 1,600 amp switchboards

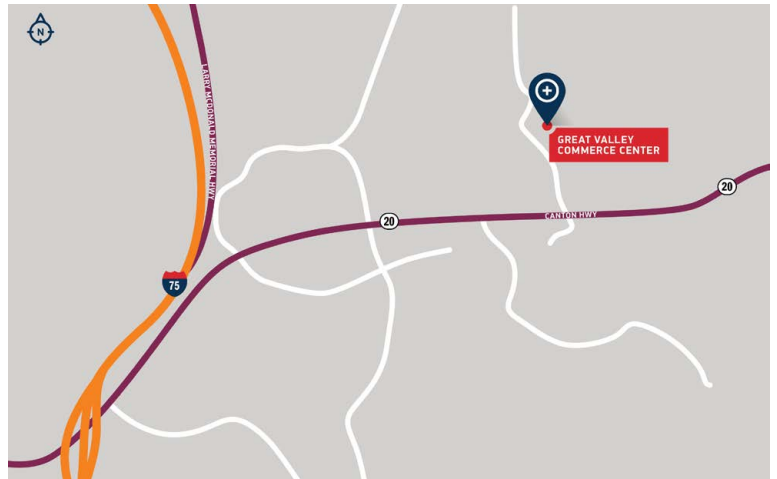
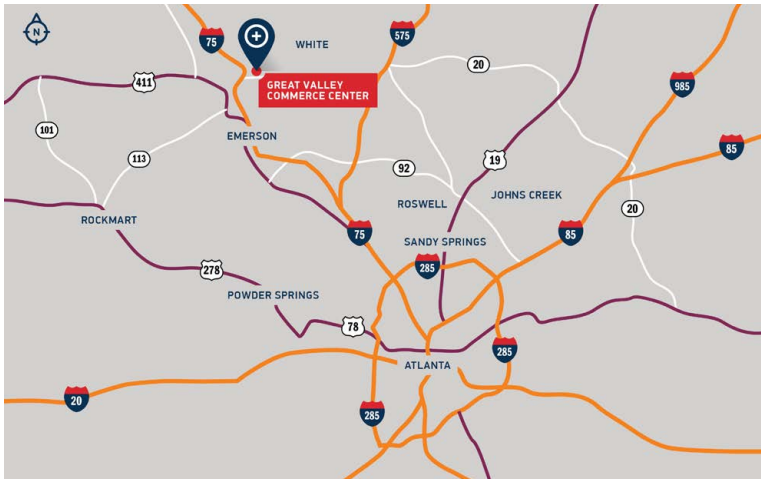


±2,382 SF



BUILDING SPECIFICATIONS

Square Footage	290,140 SF (364' x 918')
Site Area	±40.14 acres
Configuration	Front load
Slab Thickness	6" thick, 4,000 psi Ductilcrete slab
Column Spacing	54' wide x 50' deep with 60' speed bay
Clear Height	36' clear minimum
Dock High Doors	47 (9' x 10') insulated dock high doors
Drive-In Doors	2 (14' x 16') ramped, drive-in doors
Truck Court Depth	185' - 240' deep, all concrete
Auto Parking	179 auto spaces
Trailer Storage	65 trailer storage locations
Electrical	(2) 1,600 amp switchboards
Sprinkler	ESFR sprinkler system



DAYS TRUCK DRIVE TO/FROM ATLANTA



Rodney Davidson
 Vice President Investments
 O 404.262.5432
 C 678.524.8812
 rdavidson@c5ip.com



Matt Bentley
 Managing Director
 O 404.812.4079
 C 404.502.1324
 mbentley@naibg.com

© Copyright 2022 Core5 Industrial Partners, LLC. All rights reserved. CORE5, CORE5 INDUSTRIAL PARTNERS, and the stylized "C" CORE5 INDUSTRIAL PARTNERS design / logo are service marks of Core5 Industrial Partners, LLC for its real estate services, namely, acquisition, rental, brokerage, development, leasing, and management of industrial real estate property. These marks may not be used without express permission of Core5 Industrial Partners, LLC.